



Tronsmart Mirtune C3



Portable Outdoor Speaker



Model: O3030



Please scan for a more detailed user manual and access additional support information.

FR: Veuillez numériser pour obtenir un manuel d'utilisation plus détaillé et accéder à des informations d'assistance supplémentaires.

DE: Bitte scannen Sie für ein ausführlicheres Benutzerhandbuch und greifen Sie auf zusätzliche Supportinformationen zu.

IT: Si prega di effettuare la scansione per un manuale utente più dettagliato e accedere a ulteriori informazioni di supporto.

ES: Escanee para obtener un manual de usuario más detallado y acceder a información de soporte adicional.

PL: Proszę zeskanować stronę, aby zapoznać się ze szczegółową instrukcją obsługi i uzyskać dostęp do dodatkowych informacji pomocy technicznej.

PT: Procure um manual de utilizador mais detalhado e aceda a informações de suporte adicionais.

RU: Пожалуйста, просканируйте, чтобы получить более подробное руководство пользователя и дополнительную информацию о поддержке.

KR: 더 자세한 사용자 설명서를 살펴보고 추가 지원 정보를 확인하세요.

JP: より詳細なユーザー マニュアルをスキャンし、追加のサポート情報にアクセスしてください。

BU: Моля, сканирайте за по-подробно ръководство за потребителя и достъп до допълнителна информация за поддръжка.

HU: Kérjük, olvassa be a részletesebb felhasználói kézikönyvet és további támogatási információkat.

RO: Vă rugăm să scanați pentru un manual de utilizare mai detaliat și să accesați informații suplimentare de asistență.

简体中文: 立即扫码, 获取完整使用指南和保修政策。



Download 'Tronsmart App' to adjust EQ settings, update firmware, and explore more.



Apple & the Apple logo are trademarks of Apple Inc.

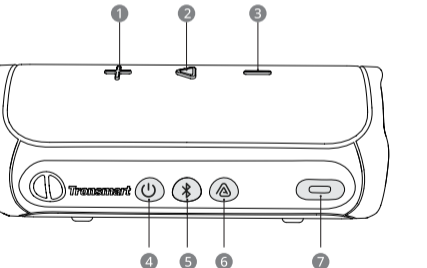


Google Play & the Google Play logo are trademarks of Google Inc.

1 Package Contents

- 1 x Tronsmart Mirtune C3 Portable Outdoor Speaker
- 1 x Type-C Charging Cable
- 1 x Warranty Card
- 1 x User Manual
- 1 x Lanyard

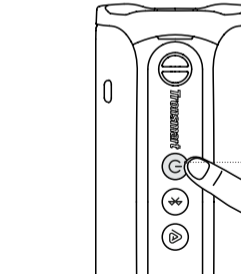
2 Button Configuration



1	Volume + /Next Track	2	Play/Pause
3	Volume - /Previous Track	4	Power On/Power Off
5	Bluetooth/Bluetooth Indicator	6	AuraCast/AuraCast Indicator
7	Type-C Charging Port		

3 How to Use

1. Turn On/Turn Off
Press for 2s to turn on/turn off.

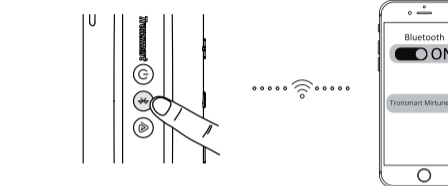


On: Press for 2s

Off: Press for 2s

2. Bluetooth Connection

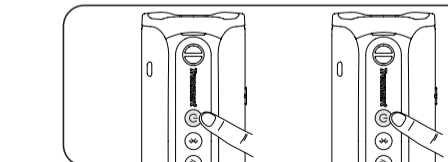
Search & click 'Tronsmart Mirtune C3' to connect.



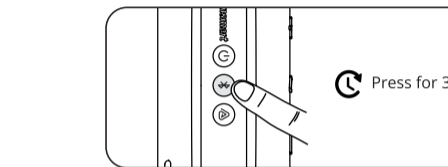
3. Enter/Exit Stereo Pairing Mode

Connect 2 Tronsmart Mirtune C3 speakers to enjoy powerful stereo sound.

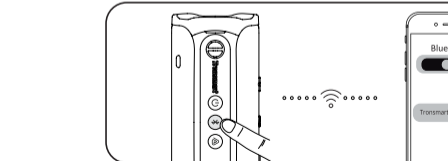
1) Turn on both speakers. Please make sure either speaker has entered pairing mode.



2) Press the 'Bluetooth' Button for 3s on both speaker to enter stereo pairing mode, the Bluetooth indicator of the host speaker flashes quickly while the vice one stays on.(Press once to exit)



3) If paired successfully, the power indicator of host speaker will stay on while vice one will off.
4) Search & click 'Tronsmart Mirtune C3' to connect.



Hereby, Shenzhen Geekbuy E-Commerce Co., Ltd. declares that the radio equipment type Portable Speaker O3030 is in compliance with Directive 2014/53/EU.The full text of the EU/UK declaration conformity is available at the following internet address: [https://www.mediafire.com/folder/mchzifhwrbs/Declaration_of_Conformity\(O3030\)-EN](https://www.mediafire.com/folder/mchzifhwrbs/Declaration_of_Conformity(O3030)-EN)

Hiermit erklärt Shenzhen Geekbuy E-Commerce Co., Ltd., dass das Funkgerät vom Typ Portable Speaker O3030 der Richtlinie 2014/53/EU entspricht. Der vollständige Wortlaut der EU/UK-Konformitätserklärung ist unter folgender Internetadresse verfügbar: [https://www.mediafire.com/folder/x94n7n2hwaamf/Declaration_of_Conformity\(O3030\)-DE](https://www.mediafire.com/folder/x94n7n2hwaamf/Declaration_of_Conformity(O3030)-DE)

Shenzhen Geekbuy E-commerce Co.,Ltd.
Warehouse 101H, No.49 South WuHe Avenue, WuHe Community, BanTian Street, LongGang District, ShenZhen, China
Email: support@tronsmart.com
800-270-1082 (USA & Canada)
+86-755-23603740 (Global)

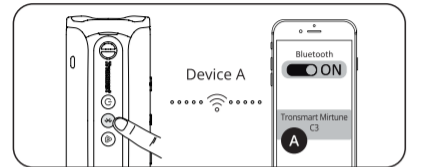
Made in China

EC REP EC REP SERVICES SL
Calle Gran Via 49,7 DCH.Madrid 28013 Spain
ecrepeservice@hotmail.com
+34682797075

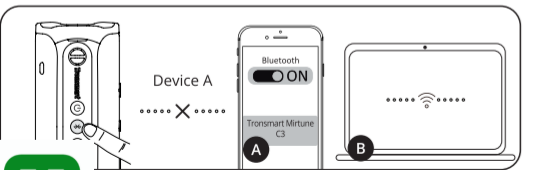
UK REP REPLAB CONSULTING LTD
376 NEWPORT ROAD,CARDIFF,WALES
UKREP@REPLAB.CC
+44 7395577022

4. Dual Audio Modes

1) Search & click 'Tronsmart Mirtune C3' to connect with device A.

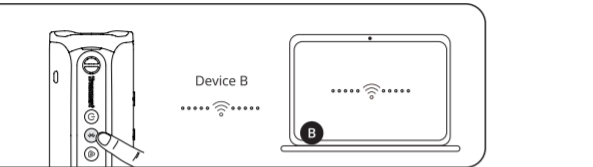


2) Disconnect 'Tronsmart Mirtune C3' from the device A (Note that do not clear the pairing record on the device).

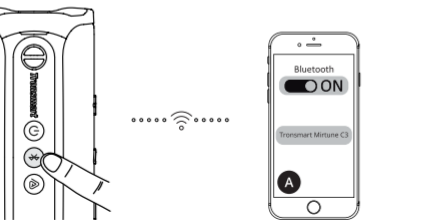


3) Tronsmart Mirtune C3 will re-enter pairing mode.

4) Search & click 'Tronsmart Mirtune C3' to connect with the device B.

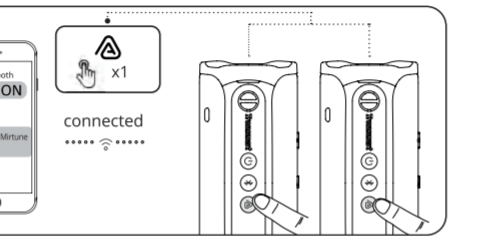


5) Click 'Tronsmart Mirtune C3' on device A to connect.



5. AuraCast Mode

With one speaker connected to a device, press the AuraCast button on Tronsmart speakers with AuraCast function to synchronize audio.



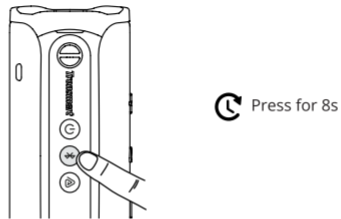
	Press Once	Enter/Exit AuraCast Mode
	Stays White	AuraCast Pairing/Connected
	Stays Blue	Host Speaker (AuraCast Connected)
	Indicator Off	Vice Speaker (AuraCast Connected)
	Press 'Bluetooth' Button Once on Vice Speaker	Exit AuraCast Mode and Re-enter Bluetooth Pairing Mode

6. Operation

	Press for 2s to turn on
	Press for 2s to turn off
	Press once to disconnect from device
	Press for 3s to enter stereo pairing mode
	Press once to exit stereo pairing mode
	Press for 8s to restore to factory setting
	Press once to enter AuraCast broadcasting mode
	Press once to exit AuraCast broadcasting mode
	Press once to switch playing modes between Bluetooth & USB-C audio mode
	Press once to turn down volume
	Press for 2s to skip to previous track
	Press once to play/pause music
	Press for 1s to enter/exit SoundPulse EQ Mode
	Press once to turn up volume
	Press for 2s to skip to next track

7. Restore to Factory Setting

Press 'Bluetooth' button for 8s.



8. Auto Power Off

The speaker will auto-off after 30 minutes if it does not pair with any device or play any music. When on low battery, the speaker will power off automatically as well.

9. Type-C Lossless Audio

For true lossless audio, connect your PC directly to the Mirtune C3 with an attached USB-C cable.

10. Specifications

Model	O3030
Bluetooth Version	6.0
Bluetooth Profile	A2DP/AVRCP
Audio Codec	SBC
Bluetooth Range	Over 30m/98ft (open area)
IP Rating	IPX7
Output Power	30W
Input Power	5V/2A, via Type-C port
Frequency Range	55Hz - 20kHz
Battery	DC 7.4V/2000mAh
Playtime (Varied by Volume Level & Audio Content)	Up to 12 Hours (On a 50% Volume)
Charging Time	2 Hours
Frequency Band	2402-2480MHz
Maximum Transmit Power	9dBm

Care & Maintenance

- Do not use any form of detergents or cleaning material to clean the product as any type of chemical may make this device unusable.
- Do not disassemble this product. It contains no user serviceable parts.
- Do not drop or jump on it and treat it with care for the best performance.
- Keep the product in a dry location. Dust, dirt & moisture from humidity can accumulate on the body of the product if kept at an unfriendly place.
- Do not dispose this product in fire or batteries may explode or leak.

Warranty Information

Your 'Tronsmart Mirtune C3 Portable Outdoor Speaker', is warranted to the original owner for 12 months from the date of purchase against defects in material and workmanship under normal use and service. Tronsmart is not responsible for the accidental use of this product and its liability will not exceed the purchase price of the product. If you have any problems while using the product, please do not hesitate to contact our customer support team at support@tronsmart.com.

FCC Statement

This device complies with Part 15 of the FCC Rules. Operation is subject to the following two conditions:
 (1) this device may not cause harmful interference, and (2) this device must accept any interference received, including interference that may cause undesired operation.
 NOTE: This equipment has been tested and found to comply with the limits for a Class B digital device, pursuant to part 15 of the FCC Rules. These limits are designed to provide reasonable protection against harmful interference in a residential installation. This equipment generates uses and can radiate radio frequency energy and, if not installed and used in accordance with the instructions, may cause harmful interference to radio communications. However, there is no guarantee that interference will not occur in a particular installation. If

this equipment does cause harmful interference to radio or television reception, which can be determined by turning the equipment off and on, the user is encouraged to try to correct the interference by one or more of the following measures:

- Reorient or relocate the receiving antenna.
- Increase the separation between the equipment and receiver.
- Connect the equipment into an outlet on a circuit different from that to which the receiver is connected.
- Consult the dealer or an experienced radio/TV technician for help.

Changes or modifications not expressly approved by the party responsible for compliance could void the user's authority to operate the equipment.

RF Exposure Information

The device has been evaluated to meet general RF exposure requirement. The device can be used in portable exposure condition without restriction.

Este equipamento não tem direito à proteção contra interferência prejudicial e não pode causar interferência em sistemas devidamente autorizados. Para maiores informações, consulte o site da ANATEL - www.gov.br/anatel/pt-br/.