



Upright Freezer
SINGLE DOOR SERIES

USER MANUAL

WHS-109FW1
MRU03M2ABB
MERU03M2AWW

Warning notices: Before using this product, please read this manual carefully and keep it for future reference. The design and specifications are subject to change without prior notice for product improvement. Consult with your dealer or manufacturer for details. The diagram above is just for reference. Please take the appearance of the actual product as the standard.

THANK YOU LETTER

Thank you for choosing Midea! Before using your new Midea product, please read this manual thoroughly to ensure that you know how to operate the features and functions that your new appliance offers in a safe way.

CONTENTS

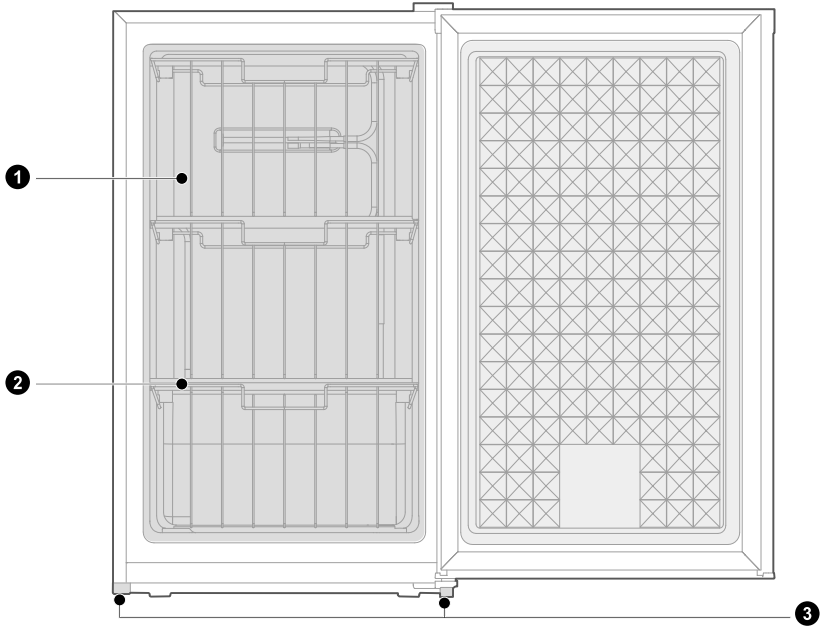
| | |
|--------------------------|----|
| THANK YOU LETTER | 01 |
| SPECIFICATIONS | 02 |
| PRODUCT OVERVIEW | 03 |
| PRODUCT INSTALLATION | 04 |
| OPERATION INSTRUCTIONS | 08 |
| CLEANING AND MAINTENANCE | 10 |
| TROUBLESHOOTING | 11 |

SPECIFICATIONS

| Product model | MERU03M2AWW/ WHS-109FW1/MRU03M2ABB |
|--------------------------------|---|
| Volume | 3.0 cu.ft.(84 L) |
| Rated Voltage | 115 V- |
| Rated Frequency | 60 Hz |
| Rated Current | 0.8 A |
| Refrigerant | R600a |
| Amount | 1.62 oz (46 g) |
| Product Dimension (W x D x H) | 19.7x21.3x33.9 in(501 x 540 x 860 mm) |

PRODUCT OVERVIEW

Names of components



- 1 Wire basket(optional)
- 2 Evaporator

- 3 Levelling foot

ATTENTION

The picture above is only for reference. The actual configuration will depend on the physical product or statement by the distributor

PRODUCT INSTALLATION

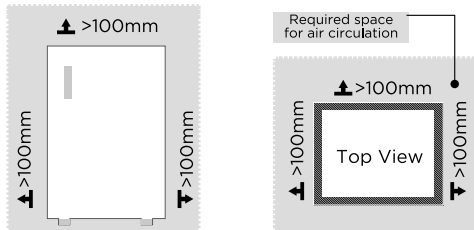
Install Instruction

Finding a suitable location

- This freezer is designed to be free standing only, and should not be recessed or built-in.
- The freezer should be placed in a well-ventilated indoor place; the ground shall be flat and sturdy .
- Keep away from heat and avoid direct sunlight. Do not place the freezer in moist or watery places to prevent rust or reduction of insulating effect.

Dimensions and Clearances

- Too small of a distance from adjacent items may result in the degradation of freezing capability and increased electricity costs. Allow over 100 mm of clearance from each adjacent wall when installing the appliance.



Providing a proper power supply

- Check your local power source. This freezer requires a **AC115 V, 60 Hz** power supply.
- Use a receptacle that accepts the grounding prong. The power cord is equipped with a 3-prong (grounding) plug which mates with a standard 3-prong (grounding) wall outlet to minimize the possibility of electric shock hazard from this freezer.

CAUTION

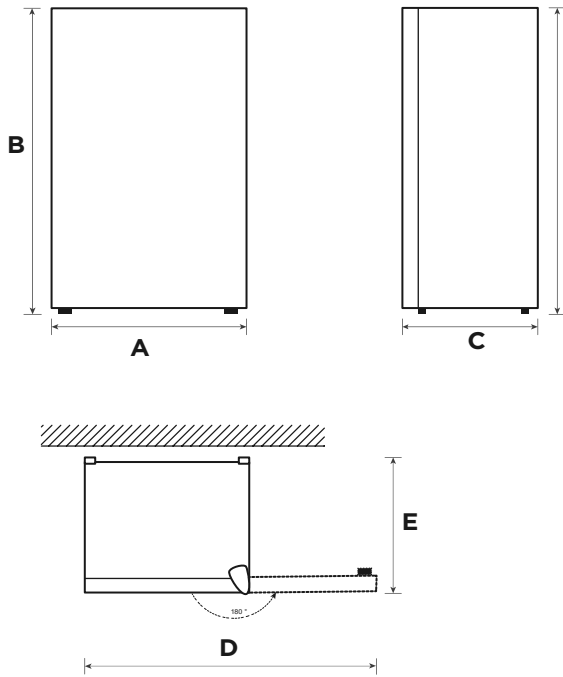
The freezer should always be plugged into its own individual electrical outlet which has a voltage rating that matches the rating plate.

Never unplug your freezer by pulling on the power cord. Always grip the plug firmly and pull straight out from the outlet.

Start to use

- The freezer shall stay in an upright position for half an hour before connecting power when it is firstly started.
- The freezer shall run 2 to 3 hours before loading fresh or frozen foods; the freezer shall run for more than 4 hours in summer in advance considering that the ambient temperature is high.

Space requirement diagram (when the door is open and when the door is closed)

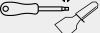


| Width | Overall Height | Depth | Depth doors open 180° | Width doors open 180° |
|-------|----------------|-------|-----------------------|-----------------------|
| A | B | C | D | E |
| 501 | 860 | 540 | 973 | 540 |

Notice: All dimensions in mm

Door right-left change

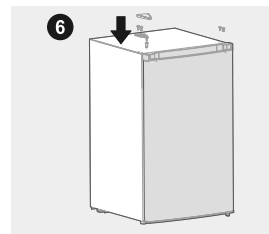
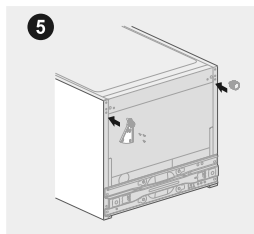
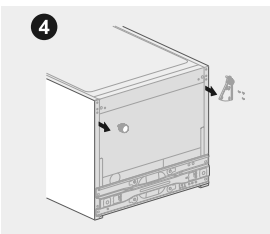
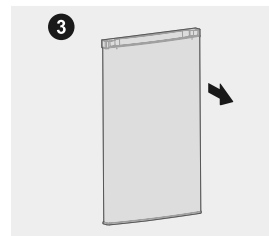
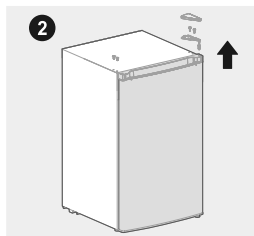
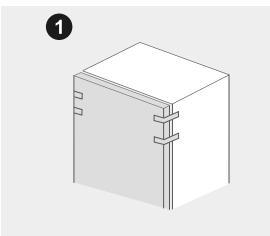
List of tools to be provided by the user

| | |
|---|------------------------|
|  | Cross screwdriver |
|  | Thin-blade screwdriver |
|  | Masking tape |

Parts to be used for door reverse

| Number | Name | Number | Note |
|--------|----------------------|--------|--|
| 1 | Upper hinge | 1 | Pre-installed on the refrigerator, still used when door is reversed |
| 2 | Upper hinge cover | 1 | Pre-installed on the refrigerator, still used when door is reversed |
| 3 | Pin | 2 | Pre-installed on the refrigerator, still used when door is reversed |
| 4 | Screw | 5 | Pre-installed on the refrigerator, still used when door is reversed |
| 5 | Shaft sleeve | 1 | Pre-installed on the end cover of the door, still used when door is reversed |
| 6 | Lower hinge assembly | 1 | Pre-installed on the refrigerator, still used when door is reversed |
| 7 | Levelling foot | 1 | Pre-installed on the refrigerator, still used when door is reversed |

1. Power off the refrigerator, and remove all objects.
2. Dismantle the hinge cover, screws upper hinge and shaft sleeve, and remove the pins from the other side.
3. Remove the door;
4. Dismantle the lower hinge assembly and levelling foot;
5. Install the lower hinge assembly removed on the right to the left side of the cabinet, and the levelling foot to the right side of the cabinet.
6. Install the door on the lower hinge assembly, and then install the upper hinge, hinge cover, shaft sleeve and pins in sequence.





Leveling feet

To avoid vibration, the unit must be leveled.

If required, adjust the leveling screws to compensate for the uneven floor.

The front should be slightly higher than the rear to aid in door closing.

Leveling screws can be turned easily by tipping the cabinet slightly.

Turn the leveling screws counterclockwise  to raise the unit, clockwise  to lower it.

Connecting the appliance

After installing the appliance, connect the power plug into a socket outlet.

ATTENTION

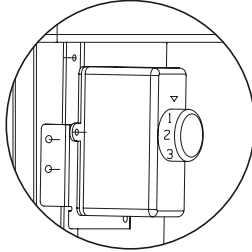
After connecting the power supply cord (or plug) to the outlet, wait 2 or 3 hours before you put food into the appliance. If you add food before the appliance has cooled completely, your food may spoil.

Tips for energy saving

- Do not place the appliance near cookers, radiators or other heat sources. If the ambient temperature is high, the compressor will run more frequently and for longer, resulting in increased energy consumption.
- Ensure that there is sufficient ventilation at the base of the appliance, on the sides of the appliance and at the back of the appliance. Never cover ventilation openings.
- Please also observe the spacing dimensions in the chapter „Installation“.
- The arrangement of drawers, shelves and racks as shown in the illustration offers the most efficient use of energy and should therefore be retained as far as possible. All drawers and shelves should remain in the appliance to keep the temperature stable and save energy.
- To obtain a larger storage space (e.g. for large refrigerated/frozen goods), the middle drawers can be removed. The top and bottom drawers and shelves should be removed last if necessary.
- An evenly filled refrigerator/freezer compartment contributes to optimal energy use. Therefore, avoid empty or half-empty compartments.
- Allow warm food to cool before placing it in the refrigerator/freezer. Food that has already cooled down increases energy efficiency.
- Allow frozen food to defrost in the refrigerator. The coldness of the frozen food reduces the energy consumption in the refrigerator compartment and thus increases the energy efficiency.
- Open the door only as briefly as necessary to minimise cold loss. Opening the door briefly and closing it properly reduces energy consumption.
- Setting the temperature no colder than necessary contributes to optimal energy use. The optimum temperature in the refrigerator is +7°C. It should be measured as far forward as possible in the top compartment of refrigerators.
- The door seals of your appliance must be perfectly intact so that the doors close properly and energy consumption is not increased unnecessarily.

OPERATION INSTRUCTIONS

Control panel



- The figures do not mean specific set temperature, but temperature level.
“1” means the warmest setting;
“6” means the coldest setting;
The higher the figure is, the lower the actual temperature inside refrigerator shall be. “OFF” means stop running.

ATTENTION

The actual control panel may differ from model to model.
The control panel will turn off automatically for energy saving.

Tips on storing food

Freezer compartment

- The freezer is designated for the storage of food frozen at very low temperature, long-term storage of frozen food, and for the production of ice.
- Only use the shelves in the door of the freezer to store frozen food, not for storing hot food designated for freezing.
- Do not put fresh and frozen food next to each other. The frozen food may thaw.
- When freezing fresh food (such as meat, fish or chopped meat), cut them into parts that can be used at the same time.
- Storing frozen food: instructions are usually stated on the packages, which must be followed. If there is no information on the packaging, food should not be stored for longer than three months from the date of purchase.
- When purchasing frozen food, make sure that it was frozen at a suitable temperature and that the packaging is not damaged.
- Frozen food should be kept in suitable packages to retain the quality and should be returned to the freezer compartment as soon as possible.
- If a package of frozen food shows moisture or abnormal bulging, it is probable that it was stored at the wrong temperature and the content is spoiled.
- The storage period for frozen food depends on the room temperature, the thermostat setting, the frequency of opening the door of the freezer, the type of food and the time of transporting the product from the shop to the household. Always follow the instructions printed on the packaging and never exceed the maximum storage time stated on the package.

ATTENTION

The optimal temperature setting of each compartment depends on the ambient temperature. Above optimal temperature is based on the ambient temperature of 25 °C.

CLEANING AND MAINTENANCE

Defrosting

Upright freezer shall be manually defrosted.

Disconnect the plug from the wall socket, open the door and remove all the food to a cool place.

It is recommended to remove the frost by a plastic scraper, or let the temperature rise naturally until the frost melts. Then wipe away the remaining ice and water, and plug in socket for switching on the freezer.

ATTENTION

Soft towels or sponge dipped in water and non-corrosive neutral detergents are suggested for cleaning. The freezer shall be finally cleaned with clean water and dry cloth. Open the door for natural drying before the power is turned on. Do not use hard brushes, clean steel balls, wire brushes, abrasives, such as toothpastes, organic solvents (such as alcohol, acetone, banana oil, etc.), boiling water, acid or alkaline items clean refrigerator considering that this may damage the fridge surface and interior.

CAUTION

Other mechanical devices or other means shall not be used to accelerate except those recommended by the manufacturer. Do not damage the refrigerant circuit.

Stop using

Power failure:

In case of power failure, even if it is in summer, foods inside the appliance can be kept for several hours; during the power failure, the times of door opening shall be reduced, and no more fresh food shall be put into the appliance.

Long-time nonuse:

The appliance shall be unplugged and then cleaned; then the doors are left open to prevent odor.

Moving:

Before the refrigerator is moved, take all objects inside out, fix the glass partitions, vegetable holder, freezing chamber drawers and etc. with tape, and tighten the leveling feet; close the doors and seal them with tape. During moving, the appliance shall not be laid upside down or horizontally, or be vibrated; the inclination during movement shall be no more than 45°.

ATTENTION

The appliance shall run continuously once it is started. Generally, the operation of the appliance shall not be interrupted; otherwise the service life may be impaired.

Foods can be preserved for a couple of hours even in summer in case of power failure; it is recommended to reduce the frequency of opening door.

TROUBLESHOOTING

The following simple issues can be handled by the user. Please call the after-sale service department if the issues are not solved.

| Problem | Possible reason |
|---------------------------------------|---|
| Failed operation | <ul style="list-style-type: none"> • Check whether the appliance is connected to power or whether the plug is in well contact |
| | <ul style="list-style-type: none"> • Check whether the voltage is too low |
| | <ul style="list-style-type: none"> • Check whether there is a power failure or partial circuits have tripped |
| Odor | <ul style="list-style-type: none"> • Odorous foods shall be tightly wrapped |
| | <ul style="list-style-type: none"> • Check whether there is any rotten food |
| | <ul style="list-style-type: none"> • Clean the inside of the refrigerator |
| Long-time operation of the compressor | <ul style="list-style-type: none"> • Long operation of the refrigerator is normal in summer |
| | <ul style="list-style-type: none"> • when the ambient temperature is high It is not suggestible having too much food in the appliance at the same time |
| | <ul style="list-style-type: none"> • Food shall get cool before being put into the appliance |
| | <ul style="list-style-type: none"> • The doors are opened too frequently |
| Light fails to get lit | <ul style="list-style-type: none"> • Check whether the refrigerator is connected to power supply and whether the illuminating light is damaged |
| | <ul style="list-style-type: none"> • Have the light replaced by a specialist |
| Door can not be properly closed | <ul style="list-style-type: none"> • The door is stuck by food packages Too much food is placed |
| | <ul style="list-style-type: none"> • The refrigerator is tiltedr. |
| Loud noises | <ul style="list-style-type: none"> • Check whether the floor is level and whether the refrigerator is placed stably |
| | <ul style="list-style-type: none"> • Check whether accessories are placed at proper locations |

| Problem | Possible reason |
|-----------------------------|---|
| Door seal fails to be tight | <ul style="list-style-type: none"> • Remove foreign matters on the door seal • Heat the door seal and then cool it for restoration (or blow it with an electrical drier or use a hot towel for heating) |
| Water pan overflows | <ul style="list-style-type: none"> • There is too much food in the chamber or food stored contains too much water,resulting in heavy defrosting • The doors are not closed properly, resulting in frosting due to entry of air and increased water due to defrosting |
| Hot housing | <ul style="list-style-type: none"> • Heat dissipation of the built-in condenser via the housing, which is normal When housing becomes hot due to high ambient temperature, storage of too much food or shutdown of the compressor is shut down, provide sound ventilation to facilitate heat dissipation |
| Surface condensation | <ul style="list-style-type: none"> • Condensation on the exterior surface and door seals of the refrigerator is normal when the ambient humidity is too high. Just wipe the condensate with a clean towel. |



make yourself at home



www.midea.com

© Midea 2022 all rights reserved