



# KAISER<sup>®</sup>

MODEL: KSB-4008

## Portable Rechargeable Speaker with FM Player

CHARGE  
FOR  
4 HOURS  
BEFORE  
FIRST  
USE



**Images are for illustrative purposes only; colors and design may vary.**

**Read the entire manual before using this product for the first time.**

[mitzu.com](http://mitzu.com)

[@mitzu.official](https://www.instagram.com/mitzu.official)

[MitzuCorp](https://www.youtube.com/MitzuCorp)

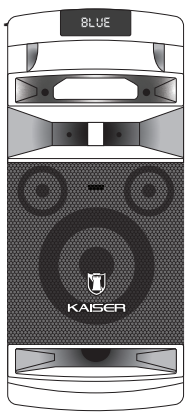
[mitzu.official](https://www.spotify.com/artist/mitzu.official)

[Mitzu.Corp](https://www.facebook.com/Mitzu.Corp)

# WELCOME

Thank you for purchasing the new KAISER® product. We are confident that you will be very satisfied with your purchase.

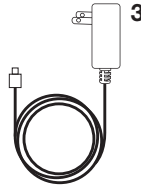
## CONTENTS



1



2



3

1. Speaker (1 piece).
2. Rechargeable Bluetooth® microphone (1 piece).
3. USB Type-C charging cable (1 piece).

## HOW TO TURN ON?



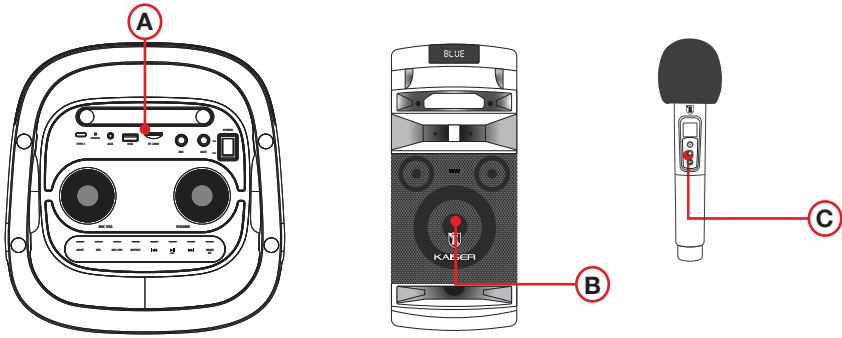
- Set all switches to OFF.
- Check that the volume is set to the lowest level.
- Verify that the voltage of the power source is compatible with the equipment's required voltage.

1. Connect the Type-C power cable to the speaker and then to the electrical outlet. Let it charge for 4 hours before turning it on for the first time.
2. Press the power on/off switch (ON) to turn on the device after charging the battery for the first time.
3. When the battery is low, connect the product to the power outlet for up to 6 hours in order to maximize its lifespan. The device can continue to be used while it is connected.



*If the device is used intermittently, it is recommended to fully charge the battery at least every 30 days.*

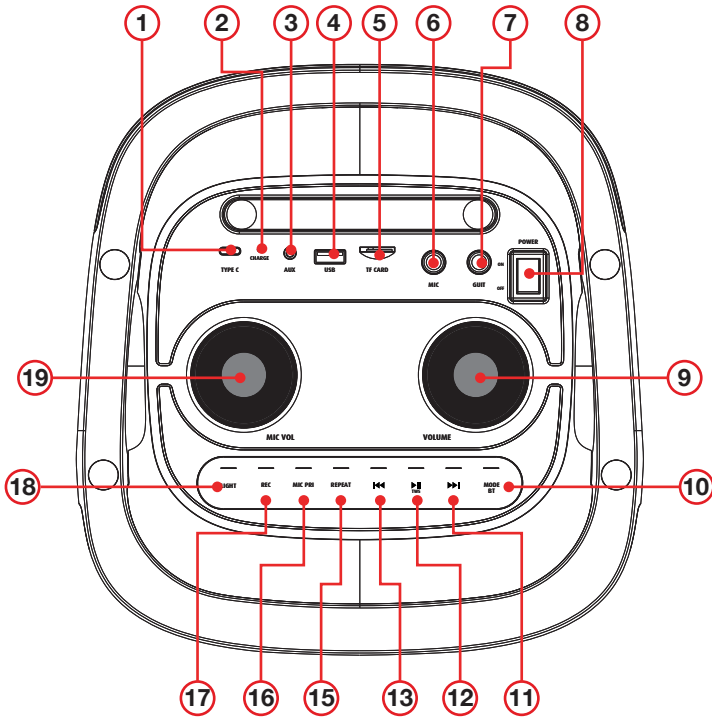
# GENERAL DESCRIPTION



- A) CONTROL PANEL.
- B) WOOFER.
- C) MICROPHONE.

# OPERATION

## A CONTROL PANEL



- 1) DC 5V type c input
- 2) Charge indicator: Light on red when charging, and light will turn off after charge fully
- 3) AUX
- 4) USB Slot
- 5) TF Card Slot
- 6) Microphone input
- 7) Guitar input
- 8) Power switch
- 9) Adjust Main volume
- 10) Mode Button: Toggle between AUX, USB, TF, FM, BT.  
Hold press to connect or disconnect Bluetooth connection in Bluetooth® mode.
- 11) Next track
- 12) Play and Pause / TWS ( Long Press to turn on the TWS in BT function )
- 13) Previous track
- 15) Repeat function for USB / TF
- 16) Microphone priority: short press for microphone priority.  
Hold press to start Echo adjustment, then hold press previous track to reduce Echo level, hold press next track to increase Echo level.
- 17) Recording: Hold press for recording, short press to play recording files.
- 18) Light :Press to transfer light mode, hold press to turn on/off light
- 19) Adjust Microphone volume

#### DISPLAY SYSTEM SETTINGS

1. Mode Input: The LED display screen will display the information of input mode for USB / TF / BT / AUX / FM. When a USB flash drive / TF Card is inserted into the USB / TF input, the unit will automatically switch to USB/TF mode and begin playing MP3 audio files from the USB flash drive / TF Card.
2. Track Number: The track number currently playing from the USB / TF will display.
3. FM Mode: All FM channels display here. Short press “play / pause” button for auto scan all channels.

**Please turn off the light switch to have a better FM signal reception**

#### BLUETOOTH®

Bluetooth® Mode: Open the Bluetooth of phone. Find the Bluetooth name of the unit called “KSB-4008” to connect. After a successful match, you can play the music from speaker. You won't need re-connect the Bluetooth® when switching mode.

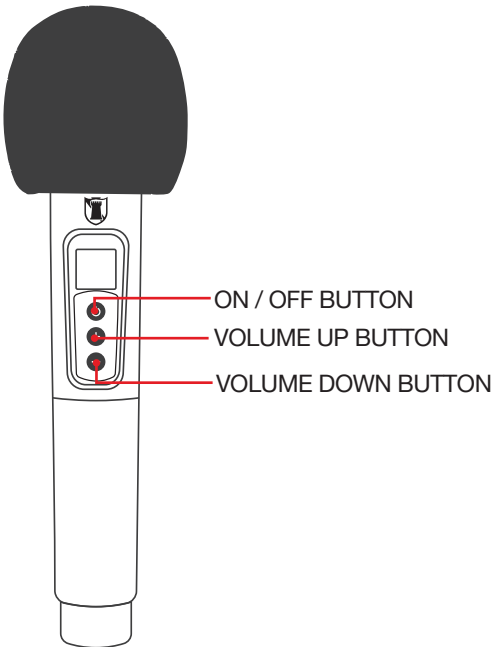
## TWS CONNECTION



- (1)TWS connection: TWS connection is only for two active speakers of same model, can not support quantity over 2 PCS.
- (2)Turn on two Speakers , press the MODE button to switch to BLUETOOTH® mode for both speakers
- (3)Please long press the Play / Pause (LINK) button on one speaker for 3 seconds. Then two speakers will automatically connect together
- (4) Connect the phone: Open the phone Bluetooth settings, Search and Connect the main device Bluetooth Name "KSB-4008". Select music from phone and enjoy TWS playing in pairs with two Speakers.

## BATTERY

The New Model is an lithium battery powered PA loudspeaker. Be sure that you have completely charged the battery prior to first use to maximize the battery's lifespan .Once the item connected to a power source it will automatically begin charging (4 ~ 6 hours to fully charge the lithium battery ).The Battery Indicator light automatically turn off when charging to full situation. And when it is on charging, the Battery Indicator light always red

## C BLUETOOTH® WIRELESS MICROPHONE



1. Hold press power button to turn on, Hold press for power off. 
2. If you notice static or distortion in the microphone, check if the connection is been interfered.
3. When not in use, turn off the power of the microphone. 

# SPECIFICATIONS

**Model:** KSB-4008

**Product Name:** Portable Rechargeable Speaker with FM Player

**FCC ID:** TBD

**Power supply:** 5 Vcc 4 A

**Battery:** 3,7 Vcc 4 400 mAh (rechargeable battery)

**Woofers:** 8" (20,32 cm)

**Impedance:** 2.5 ohm

**Frequency response:** 40 Hz - 20 kHz

**Sensitivity:** 92 dB

**Tweeter:** 2" (5,08 cm)

**Bluetooth® version:** 5.3

**Bluetooth® frequency range:** 2,4 GHz

**Bluetooth® operating range:** 32.8 ft



Volume level	Battery duration
25% volume	180 minutes
50% volume	120 minutes
100% volume	72 minutes

## WARNING

TO REDUCE THE RISK OF ELECTRIC SHOCK, DO NOT REMOVE THE COVER ON THIS SPEAKER. THERE ARE NO USER-SERVICEABLE PARTS INSIDE. REFER ALL SERVICING TO A QUALIFIED TECHNICIAN

To prevent fire or electric shock, do not expose this equipment to rain or moisture. Do not store or operate this product near any liquids, heat sources such as radiators, heat registers. Clean only with a dry cloth. Users should exhibit extra safety when this symbol appears in this instruction manual and follow all precautions as they are stated.



## IMPORTANT



During use, keep other devices at least 30 cm away from this equipment.



This equipment has no ventilation slots.



Do not place the device on flammable sources such as lit candles.



The device should not be exposed to dripping or splashing water, and objects filled with liquids (such as glasses) should not be placed on the device



## CAUTION



Installed batteries should only be replaced by qualified personnel.



Risk of explosion if the battery is not replaced correctly.



Replace only with the same type or equivalent.



Batteries (installed) should not be exposed to excessive heat such as sunlight, fire, or similar.

This device must not be exposed to dripping or splashing liquids.



*Note: This equipment has been tested and found to comply with the limits for a Class B digital device, pursuant to part 15 of the FCC Rules. These limits are designed to provide reasonable protection against harmful interference in a residential installation. This equipment generates, uses and can radiate radio frequency energy and, if not installed and used in accordance with the instructions, may cause harmful interference to radio communications. However, there is no guarantee that interference will not occur in a particular installation. If this equipment does cause harmful interference to radio or television reception, which can be determined by turning the equipment off and on, the user is encouraged to try to correct the interference by one or more of the following measures:*

- Reorient or relocate the receiving antenna.
- Increase the separation between the equipment and receiver.
- Connect the equipment into an outlet on a circuit different from that to which the receiver is connected.
- Consult the dealer or an experienced radio/TV technician for help.



*This equipment complies with FCC radiation exposure limits set forth for an uncontrolled environment. The device should be installed and operated with a minimum distance of <1 cm between the radiator and your body.*

*Changes or modifications not expressly approved by the party responsible for compliance could void the user's authority to operate the equipment.*

*This device complies with Part 15 of the FCC Rules. Operation is subject to the following two conditions:*

- (1) This device may not cause harmful interference, and*
- (2) this device must accept any interference received, including interference that may cause undesired operation.*

For questions regarding operation or compliance, contact:

MITZU GLOBAL, LLC  
828 Hallmark Dr.  
Laredo Tx 78045  
contact@mitzu.com  
+1 (956)740-7746