

## AUPU 2 in 1 Air Purifier and Humidifier Product User Manual

### ·Safety Warning·

#### READ AND SAVE THESE INSTRUCTIONS

##### Safety

- Please be sure to install this product correctly according to the manual, otherwise there may be risks of electric shock, fire, personal injury, and other damages.
- Do not allow children or intellectually disabled individuals to operate this product to avoid causing personal or property damage.
- This product is only used in indoor environments and is not suitable for use in environments with combustible gases, metallic dust, aerosols. Do not use in outdoor environments. Do not be used in industrial dust removal and humidification.

##### Placement and Handling

- Before using the product, it should be placed on a dry, flat, and stable surface to avoid leaks or other damages.
- Leave at least 20 centimeters of space around the product to ensure proper operating space for the machine.
- Do not place the product in direct sunlight. Avoid using this product in humid or high-temperature environments (such as bathrooms, toilets, and kitchens).
- Do not immerse the product in water. To prevent interference, maintain a sufficient distance between the product and other appliances such as TV, radio, microwave ovens, etc.
- When moving the machine, unplug the power first and wait for 5 minutes. During movement, do not tilt or place the machine upside down to avoid water damage.

##### Power Supply Information

- This product is only intended for use with the original machine's matching power adapter. If the power supply or power cord becomes aged or damaged, please replace it promptly. Do not use a damaged or aged power supply.
- If the power adapter or power cord is damaged, please contact AUPU customer service for assistance. Do not attempt to replace it yourself. Avoid pulling or dragging the power cord when moving the product.
- Strictly prohibit touching the power plug with wet hands to prevent electric shock. If there is dust or water stains on the power plug, please wipe it clean with a dry towel.

- When unplugging the power cord, do not pull or tug on the cord; when unplugging the plug, grasp the plug instead of the cord. Do not pull or place heavy pressure on the power cord, and keep the power cord away from high temperatures.

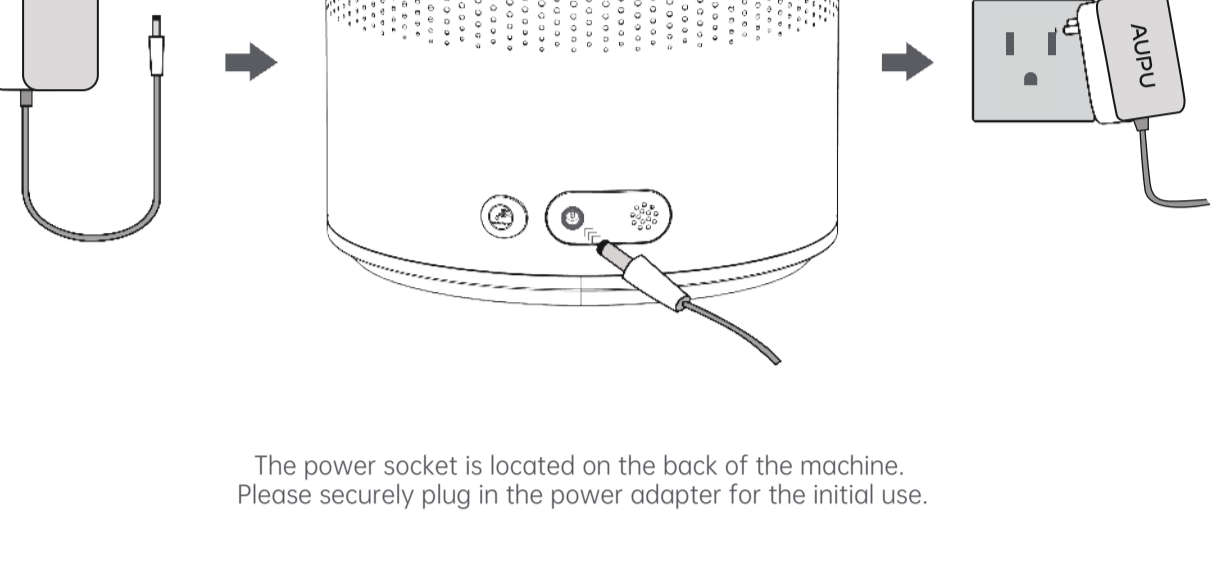
##### In use

- If the machine has not been used for a long time, please empty the water tank. If the product is damaged or experiences abnormalities such as immersion, unusual sounds, strange odors, high temperatures, etc., please stop using it immediately.
- Please do not place any other objects in the water inlet to avoid accidental immersion into the machine.
- Before starting the machine with water in the tank, please move it steadily to a suitable area. Drain the excess water through the drainage hole and avoid direct pouring to prevent water damage to the machine.

##### Warning

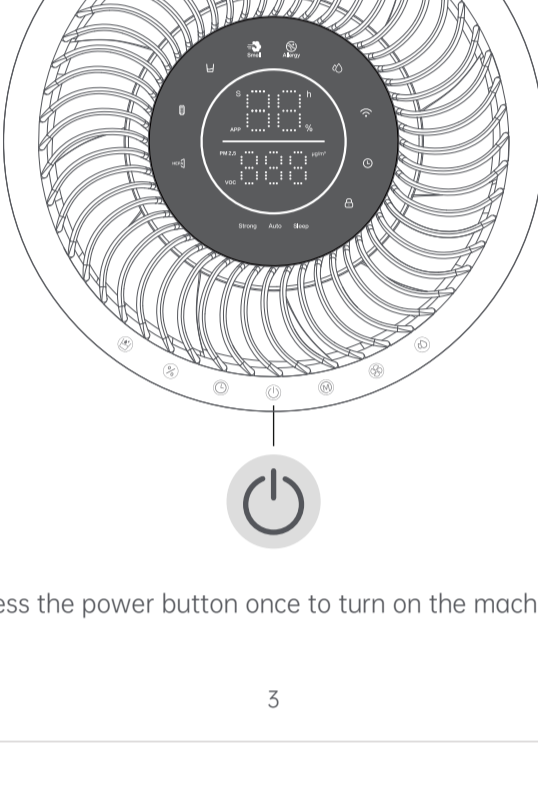
- Do not open or remove the casing for repairs without authorization, as it may pose a risk. Regardless of the cause of damage to this product, it must be repaired by professional maintenance personnel.
- Do not use any components, water filter cartridge, or humidifier filter produced by other manufacturers; otherwise, it may damage the product. The consequences arising from this are the responsibility of the consumer.
- Do not pour liquids containing impurities or corrosive substances into the water inlet to avoid product damage.
- Do not insert hands, sticks, or other objects into the air vent or the interior of the machine to avoid product damage and personal injury.
- Before replacing the humidifier filter or water filter cartridge, it is necessary to turn off the machine and unplug the power plug to prevent accidents.
- Please unplug the power plug before filling water or cleaning. The product must be disconnected from the power source before cleaning or any other maintenance.
- To Reduce The Risk Of Fire, Electric Shock Or Injury To Persons, Do Not Use Replacement Parts That Have Not Been Recommended By The Manufacturer (e.g. Parts Made At Home Using A 3D Printer).

### ·Connect the power adapter·



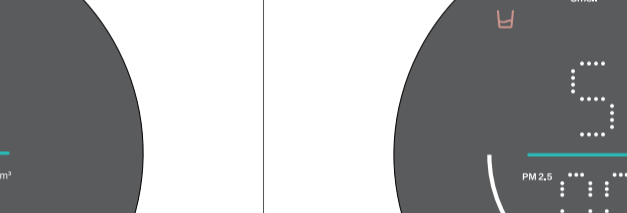
The power socket is located on the back of the machine. Please securely plug in the power adapter for the initial use.

### ·Power on·

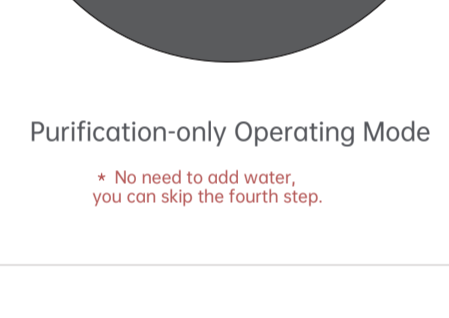


Press the power button once to turn on the machine.

### ·Purification/Purification&Humidification Mode Switch·

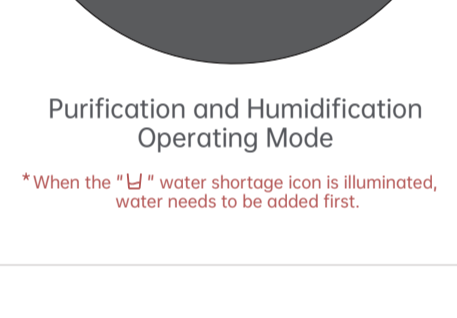


Single click to switch between purification and purification-humidification modes.



Purification-only Operating Mode

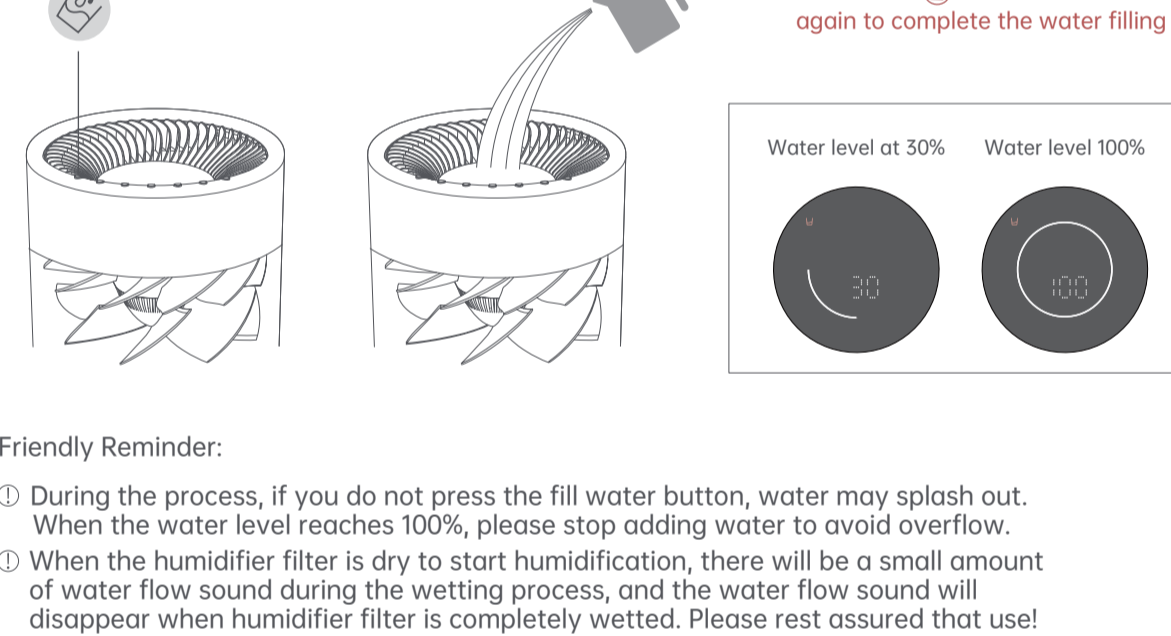
\* No need to add water, you can skip the fourth step.



Purification and Humidification Operating Mode

\*When the "L" water shortage icon is illuminated, water needs to be added first.

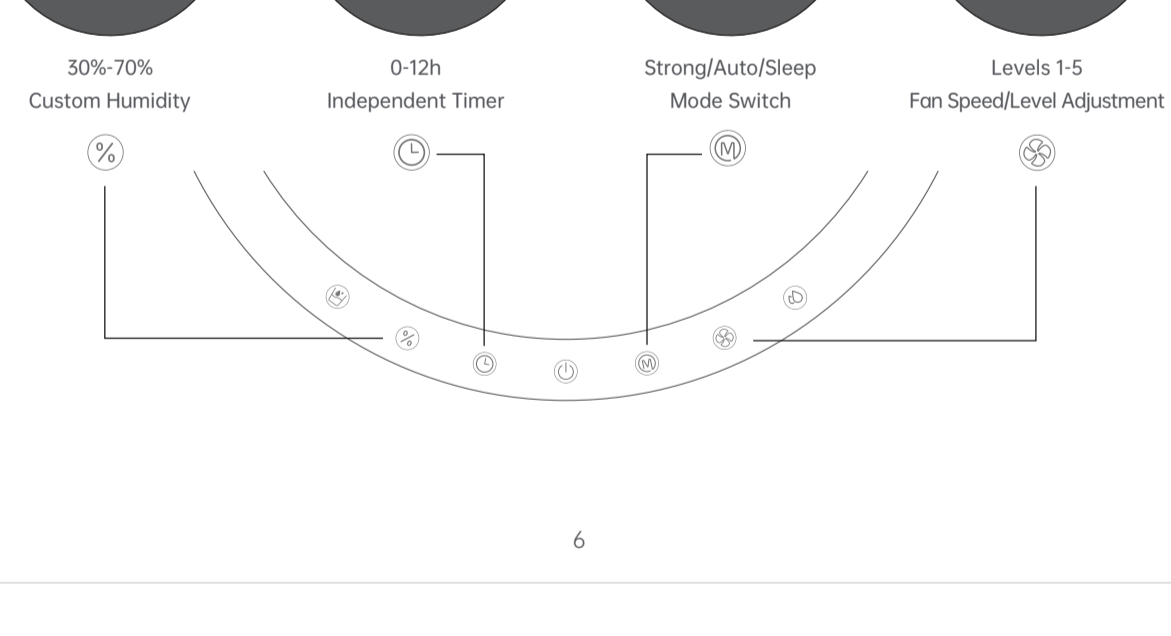
### ·Fill water from the top·



#### Friendly Reminder:

- During the process, if you do not press the fill water button, water may splash out. When the water level reaches 100%, please stop adding water to avoid overflow.
- When the humidifier filter is dry to start humidification, there will be a small amount of water flow sound during the wetting process, and the water flow sound will disappear when humidifier filter is completely wetted. Please rest assured that use!

### ·Function Description·



### ·Product Features·

#### I.Product Function Correspondence Table

Product	Main Function			Auxiliary Function	
AUPU 2 in 1 Air Purifier and Humidifier	Air Humidification	Water Purification	Air Purification	Smart Life	Custom Mode Adjustment

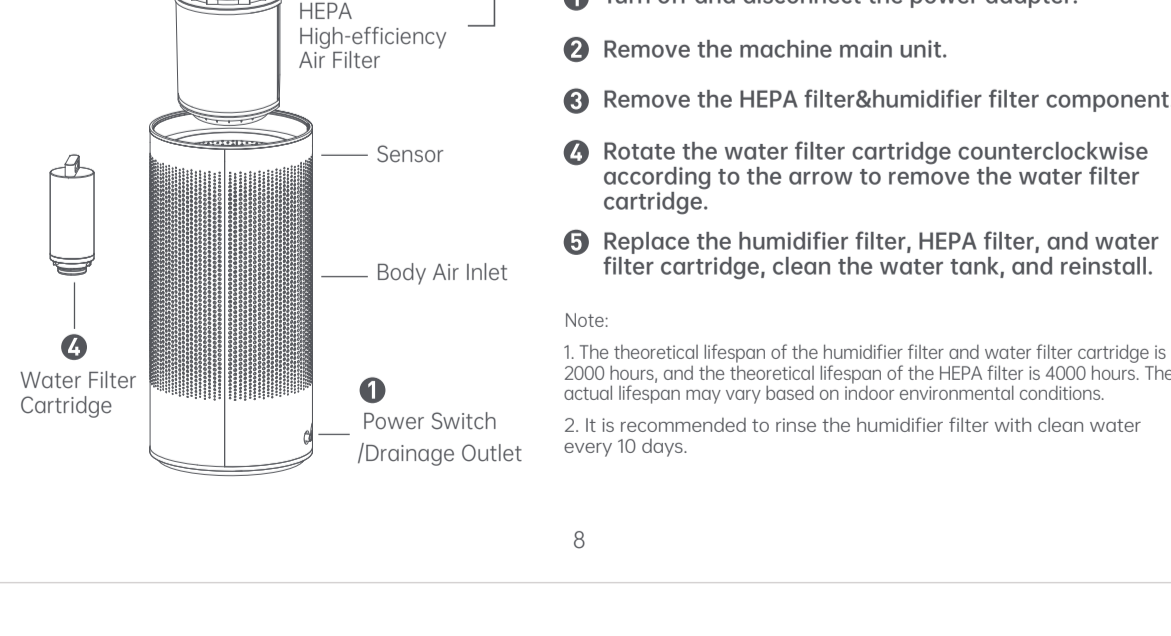
#### II.Function Introduction

- Air Humidification: Humidifies the air through a cold evaporation humidification structure.
- Water Purification: Utilizes electrolytic water sterilization, water filter cartridge, and physically antibacterial purification to effectively purify water quality and inhibit bacterial growth.
- Air Purification: Utilizes a high-efficiency air filter (HEPA) to effectively filter or remove particles, VOCs, allergens, and odors from the air.
- Custom Mode Adjustment: By using the mode button "M", you can set three commonly used modes: Strong, Auto, and Sleep. You can also customize the target environmental humidity (30% - 70%) by using the custom humidity button "%". Additionally, you can adjust the fan speed levels from 1 to 5 using the "S" fan speed button.
- For optimal purification performance when using this product's purification function, remove the entire humidifier filter assembly in the middle and retain only the HEPA filter.

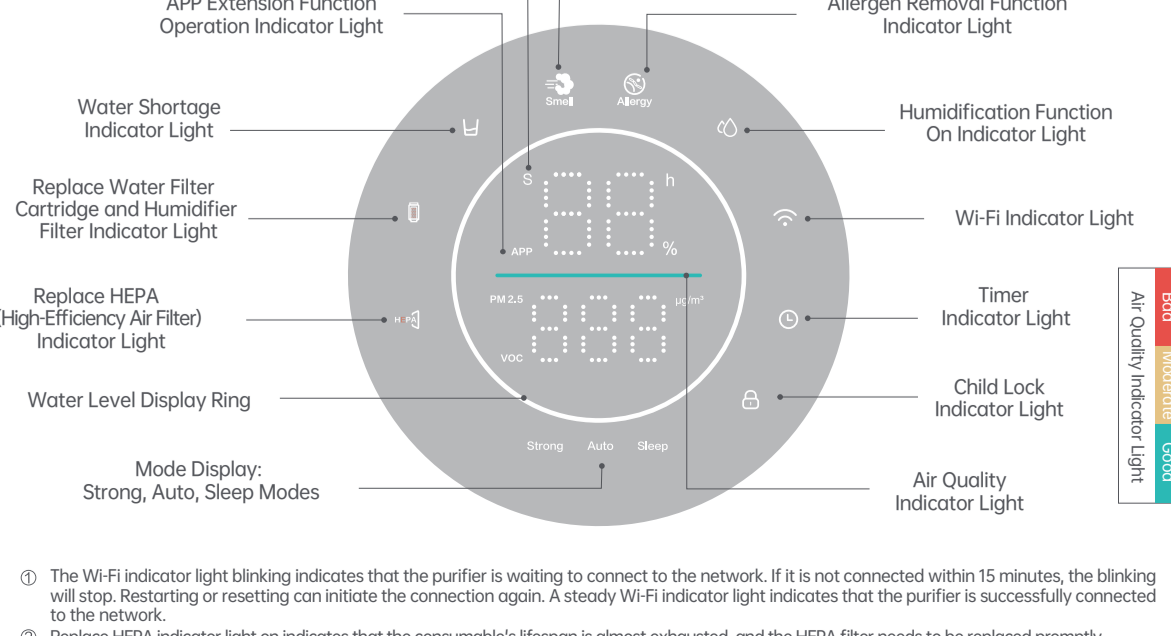
Mode Selection	Humidity Adjustment	Level Adjustment
Fan Speed Mode	/	Levels 1-5
"Strong" Mode	55% (30-70%)	Automatic Adjustment
"Auto" Mode	55% (30-70%)	Automatic Adjustment
"Sleep" Mode	55% (30-70%)	Automatic Adjustment

- This product supports control and use through the Smart Life APP.
- Screen Off Function: Operate in the Smart Life APP settings; by default, it is in the off state. The off state means that, without any button operation, the screen brightness will automatically decrease after a period, but the screen will not be turned off. When the screen-off function is enabled, the display screen will automatically turn off, entering the screen-off state.
- Timer: In the powered-on state, press the "T" button to enter the delayed shutdown setting interface. The "T" icon in the display will light up, and the "h" icon will blink. The screen will show the delayed shutdown time. Click the "T" button to adjust the time. After setting, wait for a few seconds, and the device will automatically exit the setting interface. If a delay time is set, the "T" icon will light up; otherwise, the delay icon will go off.

### ·Cleaning and Maintenance & Product Details·

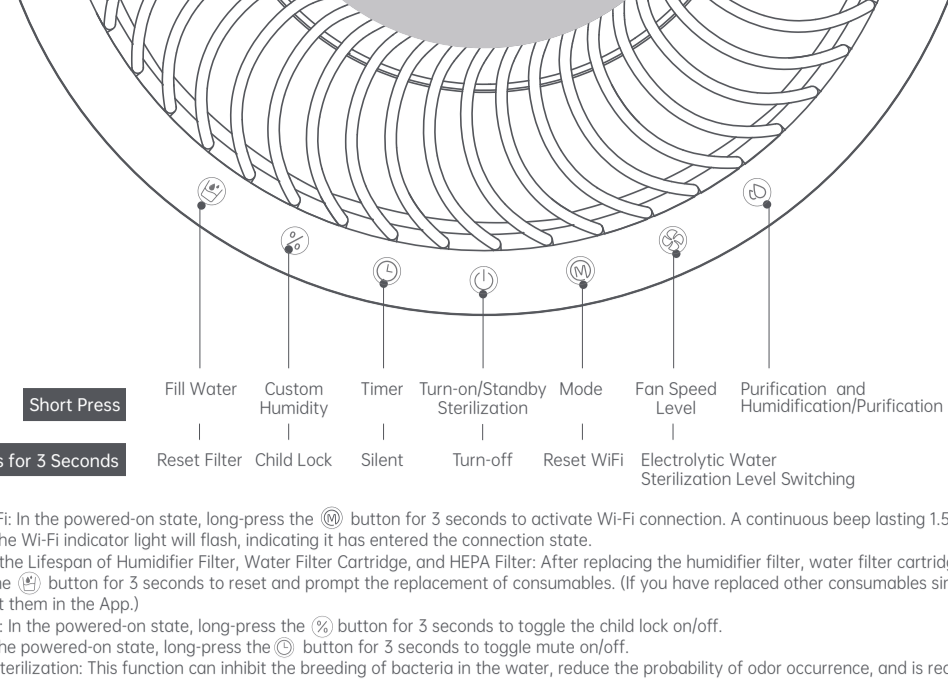


### ·Interface Display·



- The Wi-Fi indicator light blinking indicates that the purifier is waiting to connect to the network. If it is not connected within 15 minutes, the blinking will stop. Restarting or resetting can initiate the connection again. A steady Wi-Fi indicator light indicates that the purifier is successfully connected to the network.
- Replace HEPA indicator light on indicates that the consumable's lifespan is almost exhausted, and the HEPA filter needs to be replaced promptly.
- Air quality indicator light: Blue-green indicates good, yellow indicates moderate, and red indicates bad.
- The humidity maintenance mechanism indicator light on indicates that the machine has reached the target humidity. It will activate the humidity maintenance mechanism, maintaining the environmental humidity around the target by either stopping operation or adjusting the level.

## ·Operation Indicators·



Short Press

Long Press for 3 Seconds

Fill Water | Custom Humidity | Timer | Turn-on/Standby Sterilization | Mode | Fan Speed Level | Purification and Humidification/Purification

Reset Filter | Child Lock | Silent | Turn-off | Reset WiFi | Electrolytic Water Sterilization Level Switching

- ① Reset Wi-Fi: In the powered-on state, long-press the button for 3 seconds to activate Wi-Fi connection. A continuous beep lasting 1.5 seconds will sound, and the Wi-Fi indicator light will flash, indicating it has entered the connection state.
- ② Resetting the Lifespan of Humidifier Filter, Water Filter Cartridge, and HEPA Filter: After replacing the humidifier filter, water filter cartridge, or HEPA filter, long-press the button for 3 seconds to reset and prompt the replacement of consumables. (If you have replaced other consumables simultaneously, you need to reset them in the App.)
- ③ Child Lock: In the powered-on state, long-press the button for 3 seconds to toggle the child lock on/off.
- ④ Silent: In the powered-on state, long-press the button for 3 seconds to toggle mute on/off.
- ⑤ Standby Sterilization: This function can inhibit the breeding of bacteria in the water, reduce the probability of odor occurrence, and is recommended for use. (This function has power-off memory. When it is in the on state, it will automatically start after reconnecting the power.)
- ⑥ Electrolytic Water Sterilization Level Switching: The electrolytic water sterilization module has multiple levels and runs by default in "P1" mode. You can switch levels by long-pressing the button for 3 seconds. (P1 - Mild sterilization level, P2 - Moderate sterilization level, P3 - Strong sterilization level)
- ⑦ Purification and Humidification/Purification: In the powered-on state, press the button to switch between the purification and purification with humidification modes. In the "Purification" mode, the humidification function will be turned off, and the machine can still operate normally even if the water tank is empty. In the "Purification with Humidification" mode, the machine will activate the humidification function and automatically stop working when the water tank is empty, waiting for water.

10

## ·Connect to Smart Life App·

AUPU 2 in 1 Air Purifier and Humidifier supports networking (only supports 2.4GHz Wi-Fi). To use it, download and install the Smart Life App and follow the specific steps below:

1. Download the Smart Life App by searching for "Smart Life" in your smartphone's app store. Install the app and ensure that your home Wi-Fi is able to connect to the internet.
2. When the product is powered-on state, long-press the "M" button for 3 seconds to activate Wi-Fi connection. And then open the Smart Life App, click on the "+" in the top right corner to add a device, and follow the prompts provided by the app.
3. Choose the AUPU Air Purifier and Humidifier, connect to Wi-Fi, enter the password, click "Next". During the connection process, if a prompt appears saying "Smart Life is trying to turn on or off Wi-Fi", please click "Allow once".
4. Once the device is successfully added, it will automatically redirect to the operational interface.

- Scan the QR code to download the Smart Life app.
- After installation, please add the device within the app and follow the prompts.



Please download the electronic version of the user manual on the AUPU Amazon product page or the official website "https://iaupu.com/."

11

## ·Basic Parameters·

Product Name	AUPU 2 in 1 Air Purifier and Humidifier	Rated Humidification Capacity	1100mL/h
Product Model	AP - C1	Water Tank Capacity	5.5L
Product Dimensions (in millimeters)	250*250*720	Types of Water Suitable for Adding	Tap water, Purified water
Product Net Weight	6.4kg	CADR(Clean Air Delivery Rate for Particulate Matter)	330m <sup>3</sup> /h/194CFM
Rated Voltage (Main Unit)	24V ===	Noise (Sound Power Level)	≤ 65dB(A)
Rated Power	48W	Noise (Sound Pressure Level)	≤ 51.8dB
Ideal Room Size	320 ft <sup>2</sup> / 30 m <sup>2</sup> ·This ideal room size is based on 5 air changes per hour(ACH). 773 ft <sup>2</sup> / 72 m <sup>2</sup> ·This ideal room size is based on 2 air changes per hour(ACH). Note: * Effective for larger rooms, but purification will take longer.	Sleep Mode Noise (Sound Power Level)	≤ 32.5dB(A)
		Sleep Mode Noise (Sound Pressure Level)	≤ 19.5dB

12

## ·Lifespan of Filter·

### When should I Replace the Filter?

HEPA filter should be replaced every 4000 hours or 12 months. Water filter cartridge should be replaced every 2000 hours or 12 months. Humidifier filter should be replaced every 2000 hours or 12 months. Replacing the filter involves measuring two values and prioritizing the one that is completed first to determine when to replace the filter.

Depending on the quality of your environment, the quality of your water, the frequency of use and the frequency of maintenance, the life of the consumables may increase or decrease. It means you will need to replace the filter more frequently, even if replacement indicator light is off.

### Replace Filter Use Time Reference Table

HEPA Filter

Frequency of use	Air Quality Moderate	Air Quality Bad
Average day use 11 hours	12 months	9 months
Average day use 22 hours	6 months	4 months

Water Filter Cartridge

Frequency of use	Water Quality Good	Water Quality Bad
Average day use 11 hours	6 months	4 months
Average day use 22 hours	3 months	2 months

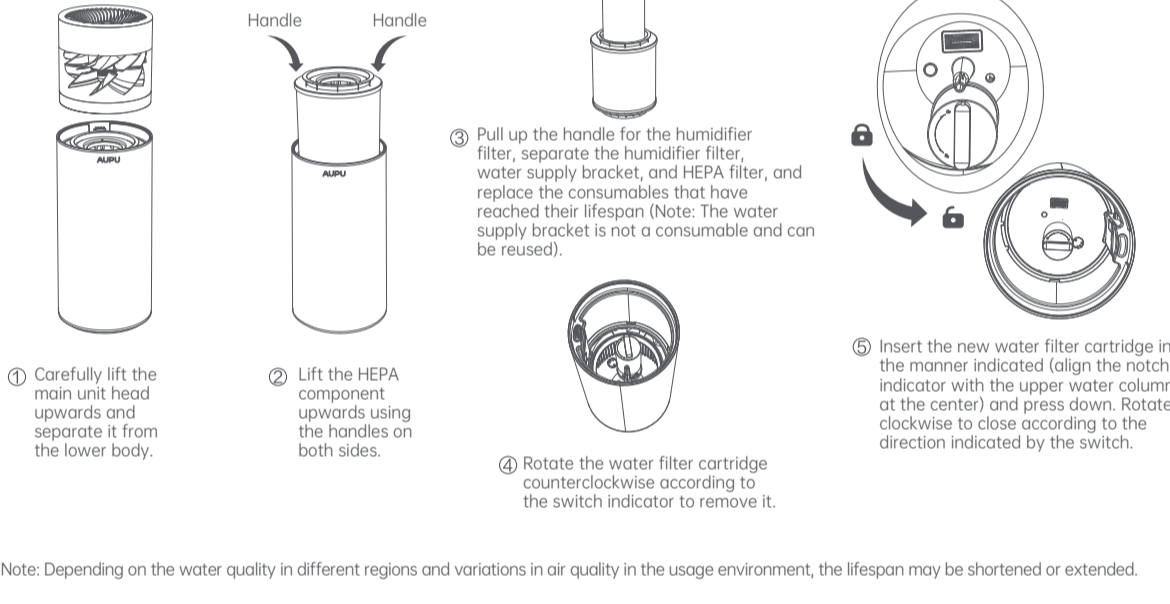
Humidifier Filter

Frequency of wash	Wash every week	Wash per two weeks
Average day use 11 hours	6 months	4 months
Average day use 22 hours	3 months	2 months

13

## ·Replace the Humidifier Filter, Water Filter Cartridge, and HEPA Filter·

The machine comes with a reminder function for replacing the humidifier filter, HEPA filter, and water filter cartridge. When the detected lifespan is less than 100 hours, the product will issue a reminder, and the indicator light will illuminate (see Interface Display for details). After replacing consumables, long-press the "Fill Water" button for 3 seconds to reset the filter life monitor. (If you have replaced other consumables that have not been prompted for replacement, please reset them through the app, otherwise, the lifespan monitor will not automatically recognize the replacements).



Note: Depending on the water quality in different regions and variations in air quality in the usage environment, the lifespan may be shortened or extended.

14

## ·Maintenance and Care·

Before production and care, the product must be disconnected from the power supply.

### Maintenance of PM2.5 and VOC Sensors:

1. Use a vacuum cleaner to clean the sensor's external air inlet. It is recommended to clean it every 3-6 months.
2. Internal cleaning of the sensor should be performed under the guidance of customer service.
3. Internal cleaning process of the sensor: Drain any remaining water and remove the HEPA component. Use a flat-head screwdriver to pry open the outer cover of the sensor, flip it over, use a brush to clean the dust, and reinstall it following the original path.

### Cleaning and Maintenance of HEPA:

1. While filtering the air, HEPA captures large particles such as cotton and lint on the surface. Excessive accumulation can increase the air resistance of HEPA, affecting the machine's air intake.
2. It is recommended to clean the filter surface once a month.
3. Cleaning method: Remove the entire HEPA from the machine. Use a vacuum cleaner to remove accumulated debris from the outer surface. If there is less lint on the surface, you can wipe it with a clean tissue.

**Note: Do not wash HEPA with water.**

### Humidifier Filter and Water Tank Cleaning and Maintenance:

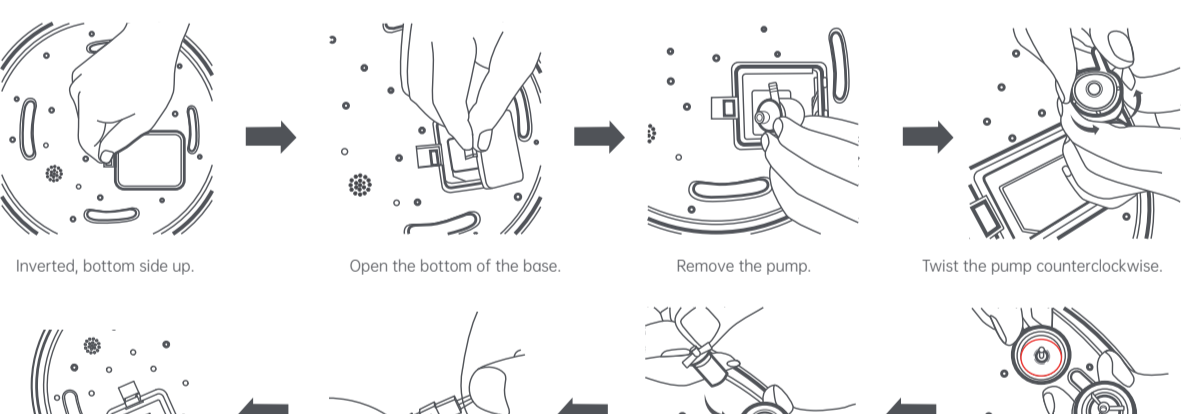
1. Water Tank Maintenance: If you haven't used the humidifier mode for an extended period (3-5 days), please drain the accumulated water in the machine to prevent bacteria growth.
2. Water Replacement Reminder: If the water in the tank has been stored for several days (and exceeds 10% capacity), the machine, in a connected state through the Smart Life app, will send a "Water Replacement Reminder" notification (this function requires connection to the Smart Life app).
3. Water Tank Scaling Cleaning: Remove the machine head, HEPA components, and the water filter cartridge. Fill half of the water tank with clean water, add citric acid mixed at a ratio of 1:20 with water, soak for 1 hour, then use a long-handled brush to scrub the tank walls (if there is scaling in the electrolytic water module, it can be cleaned simultaneously). After cleaning, drain the water and rinse the tank with clean water until it is thoroughly clean.
4. Humidifier Filter Maintenance: Due to the role of the humidifier filter in filtering water and air during the humidification process, to avoid discoloration and odors, it is recommended to clean the humidifying sponge weekly.
5. Humidifier Filter Cleaning: Remove the machine head, take out the humidifier filter, soak it in a solution of dish soap mixed at a ratio of 1:500 with water for 10 minutes, then hand wash. Rinse the sponge with clean water until it is thoroughly clean after cleaning.

15

## ·Pump Maintenance and Care·

Before production and care, the product must be disconnected from the power supply.

1. Drain the remaining water in the body and place the machine upside down;
2. Open the base bottom cover and set aside;
3. After removing the pump, twist counterclockwise to dismantle the pump.
4. Remove the rotor, and clean the rotor and pump body with water (install the rotor in the groove)
5. Install back on the machine in order after cleaning.
6. It is recommended to clean it every 3-6 months.



**Note: Ensure the seal ring inside the pump is properly installed after disassembly and reassembly. Please watch the cleaning video in "https://iaupu.com/pages/support".**

16

## ·Faults and Alarms·

When the machine encounters a fault code, it stops working, the digital display shows the fault code, and the alarm beeps 3 times.

Display Code	Cause of Malfunction	Troubleshooting
Eb	Communication failure between the main control and the power board	Please disconnect the power supply of the product. Let it sit for a while, and then power it on again. If the issue is not resolved, please contact AUPU customer service.
Ec	Communication failure between the water level detection board and the power board	Please disconnect the power supply of the product. Let it sit for a while, and then power it on again. If the issue is not resolved, please contact AUPU customer service.

## ·FCC COMPLIANCE·

NOTE: This equipment has been tested and found to comply with the limits for a Class B digital device, pursuant to Part 15 of the FCC Rules. These limits are designed to provide reasonable protection against harmful interference in a residential installation. This equipment generates, uses, and can radiate radio frequency energy and, if not installed and used in accordance with the instructions, may cause harmful interference to radio communications. However, there is no guarantee that interference will not occur in a particular installation. If this equipment does cause harmful interference to radio or television reception, which can be determined by turning the equipment off and on, the user is encouraged to try to correct the interference by one or more of the following measures:

- Reorient or relocate the receiving antenna.
- Increase the separation between the equipment and receiver.
- Connect the equipment into an outlet on a circuit different from that to which the receiver is connected.
- Consult the dealer or an experienced radio TV technician for help.

Warning: Changes or modifications to this unit not expressly approved by the party responsible for compliance could void the user's authority to operate the equipment.

17

## ·Service·

### Warranty Regulations:

- Warranty Period: The product is covered by a one-year warranty.
- Consumables such as the humidifier filter, water filter cartridge, and HEPA filter are not covered by the warranty.
- To initiate a warranty claim, a purchase receipt (original invoice, electronic invoice, online shopping delivery note) must be provided to determine the warranty start date.
- If a purchase receipt cannot be provided, the default warranty start date is: Factory date + Three months.

### Non-Warranty Regulations:

- This product is a household product with non-routine and non-suitable for construction dust removal, industrial dust removal, and similar scenarios. If the product is used in non-routine household environments and malfunctions occur, it will not be covered by the warranty.
- Damage caused by not following the product's instructions for use, maintenance, and storage.
- Damage caused by force majeure.
- Damage caused by non-designated professionals during component inspection and repair.

### After-sales Service:

If you have any questions or need assistance, please contact the store where you made the purchase. For any issues within or outside the warranty period, AUPU will adhere to the principle of 'Customer First' and make every effort to assist you.

### Manufacturer by Zhejiang AUPU Home Style Corporation Limited

● support@iaupu.com ● https://iaupu.com/

## ·ATTRIBUTIONS·

Smart Life and all related logos are trademarks of TUYA LLC or its affiliates.

App Store® is a trademark of Apple Inc.

Wi-Fi® is a registered trademark of Wi-Fi Alliance®.

Other trademarks and trademark information are those of their respective owners.

18