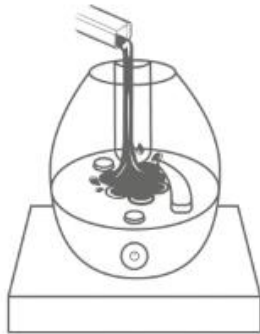




DROP Top Fill Cool Mist Humidifier with Sound Machine

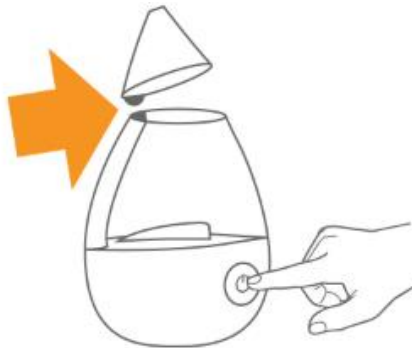
<h2>QUICKSTART</h2>	<p>Please contact us first with any questions or problems you have about the operation of your Crane humidifier.</p> <p> 1-888-599-0992 questions@crane-usa.com</p>
---------------------	--



FILL

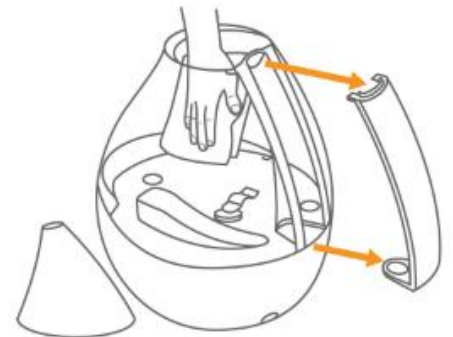
Fill tank from top with fresh water and place on solid elevated surface at least 2 ft. off the ground.

DO NOT PLACE ON WOOD SURFACE



ASSEMBLE + SET

Place mist nozzle and water tank disk, lip facing down onto tank opening. Adjust intensity by pressing the power button.



EMPTY + CLEAN

Large Tank opening and removable mist channel cover. Use Crane Cleaner or vinegar and water. Store in a cool dry place.

IMPORTANT : PLACE WATER LEVEL SENSOR FLOAT INTO BASE



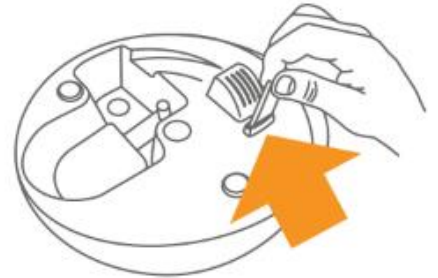
SOUND MACHINE

Tap icon to cycle through different sounds.
Press and hold icon to set volume.



NIGHTLIGHT

Tap icon to turn on color changing light.
Tap again to choose desired color or turn off.



VAPOR PAD

Only use vapor pad in the aroma tray.
Do not put vapor pad or essential oils in the tank.

Crane

PLEASE READ INSTRUCTIONS!

DROP Top Fill Cool Mist Humidifier with Sound Machine

For all models of EE-5306 series



If you have any questions about the operation of your humidifier, please contact Crane Customer Care.

Toll Free: 1-888-599-0992

Email: customer-service@crane-usa.com



**PLEASE READ AND SAVE ALL INSTRUCTIONS TO ENSURE
THE SAFE AND EFFECTIVE USE OF THIS HUMIDIFIER.**

SAVE YOUR DATED PROOF OF PURCHASE!

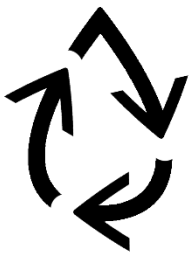
[You will need this in case of warranty]

staple
tape
or paperclip
your
receipt
HERE

TABLE OF CONTENTS

Table of Contents& Sustainability	P. 1
Safety Instructions	P. 2-3
List of Main Parts	P. 4
Technical Specifications, Assembly & Use	P. 5-6
Sound Machine, Nightlight Function, Aroma Tray	P. 7
Maintenance, Cleaning& Storing Your Humidifier	P. 8 -9
Customer Care &Trouble Shooting	P. 9
Warranty	P. 10

CRANE & SUSTAINABILITY



Crane USA is dedicated to your environment both inside and outside your home. We know if cleaned and maintained properly, our products last for years helping to reduce unnecessary use of resources and emissions making new products.

The Crane manual you are holding is from recycled materials with no added finishes or harmful dyes. If the humidifier should no longer operate, please be sure to dispose of the unit in an environmentally friendly way by taking it to a public collection point.

PLEASE DO NOT PLACE BROKEN HUMIDIFIERS WITH YOUR REGULAR HOUSEHOLD WASTE.

IMPORTANT SAFETY INSTRUCTIONS



WARNING! READ AND SAVE THESE INSTRUCTIONS. Failure to follow all of the instructions listed below may result in electric shock, fire and/or serious personal injury.

1. **It is advisable to carry filled Water Tank with two hands.**
2. **ALWAYS secure water level sensor float into humidifier base before use.**
3. **DO NOT operate outdoors. This humidifier is intended for indoor use only.**
4. Always have water in the Water Tank when operating the unit.
5. Use only clean, cool tap water to fill the Water Tank (filtered or distilled water is recommended to avoid white dust if tap water is too hard). **DO NOT use hot water.**
6. Be sure that the Water Tank Disk and Mist Nozzle are placed securely on Water Tank. Always have the Water Tank Disk and Mist Nozzle in place while the unit is operating. Place the humidifier so the mist aims away from children, walls, furniture and electrical appliances.
7. Use only a 100-240VAC outlet. Only use the AC Adaptor cord that came with the unit. **ALWAYS plug and unplug unit with dry hands to avoid electric shock.**
8. Never operate the unit with a damaged cord or plug.
9. Always place the unit on a smooth, flat, lint-free, non-metallic, waterproof and level surface and position unit away from direct sunlight. Keep the cord away from heated surfaces and areas where it could be walked on or tripped over. Unplug the unit when not in use and whenever you clean or move the unit.
10. **Do not add** medication or essential oils of any type into the Water Basin or Water Tank. **ONLY use vapor pads or essential oils on an unscented pad in the Aroma Tray of this humidifier.** Do not cover any openings on the unit or insert objects into any openings.
11. The unit should not be left unattended in a closed room as the air could become saturated and leave condensation on walls or furniture. Leave room door partly open when humidifier is being operated.
12. When cleaning humidifier base, keep water away from the Fan Vent. **Turn off and unplug the humidifier to wipe the exterior** (except the electrical controls) with a damp cloth. Humidifier requires regular cleaning. Please refer to the MAINTENANCE & CLEANING in this manual (pages 8-9).
13. Do not tilt or tip the humidifier or attempt to empty or fill it while it is in operation.
14. Do not use a detergent to clean any parts of the unit that contain water. Detergent film dissolved in the water supply can interfere with the output of the unit. Instead, always use white vinegar mixed with water to clean the humidifier.

SAVE THESE INSTRUCTIONS!

GENERAL SAFETY INSTRUCTIONS



WARNING! Read and understand all instructions. Failure to follow all instructions listed below may result in electric shock, fire or serious personal injury. The warnings, cautions, and instructions discussed in this instruction manual cannot cover all possible conditions and situations that may occur. It must be understood by the user that common sense and caution are a factor which cannot be built into this product but must be supplied by the user.

THIS HUMIDIFIER IS NOT A TOY!

Do not let your child play with this humidifier. Serious injury and electrocution might be possible. This humidifier has to be operated by an adult only. Children should be supervised to ensure that they do not play with the humidifier.

SAVE ALL INSTRUCTIONS!

CAUTION: A short Power Supply Cord is provided to reduce the risk of personal injury resulting from becoming entangled in or tripping over a longer cord. Extension cords are available from local hardware stores and may be used if care is exercised in their use. If an extension cord is required, special care and caution is necessary. Also the extension cord must be (1) marked with an electrical rating of 125 V and at least 13 A., 1625 W., and (2) the cord must be arranged so that it will not drape over the countertop or tabletop where it can be pulled on by children or accidentally tripped over.

ELECTRIC POWER

If the electric circuit is overloaded by other appliances, your humidifier and/or appliances may not operate properly. The humidifier should be operated on a separate electrical circuit from other operating appliances.

AC ADAPTOR

The AC/DC Adaptor included with the Crane Drop Cool Mist Humidifier with Sound Machine is 100-240V 50/60 Hz and can be used worldwide. However, in some countries you may need to use an outlet adaptor.



SAFETY WARNING

Although your humidifier is easy to operate, for your safety, the below warnings must be followed:

1. Do not place the humidifier near a heat source.
2. Never leave the humidifier unattended while connected to the electrical outlet.
3. To avoid any accidents, never cover the Mist Nozzle when the humidifier is in operation.
4. Use the humidifier on a smooth, flat, lint-free, non-metallic, waterproof, and level surface away from water.
5. Do not unplug from the wall socket by pulling on the supply cord.
6. The humidifier must be unplugged:
 - A. Before either filling or emptying the humidifier Base and/or Water Tank.
 - B. Before any cleaning or maintenance is performed.
 - C. After each use.
 - D. If it appears to be faulty.

THIS PRODUCT IS INTENDED FOR HOUSEHOLD USE ONLY.

LIST OF MAIN PARTS

IMPORTANT: Water level sensor must always be secure in the base of the humidifier!

Fig. 1 (Humidifier Base)

1. Nebulizer
2. Fan Outlet
3. LED Light
4. Aroma Tray for vapor pads
5. Water Level Sensor Float
6. Power Button and Indicator Light
7. Nightlight Color Changing Control (optional)
8. Sound Machine Control (optional)
9. Plug Port

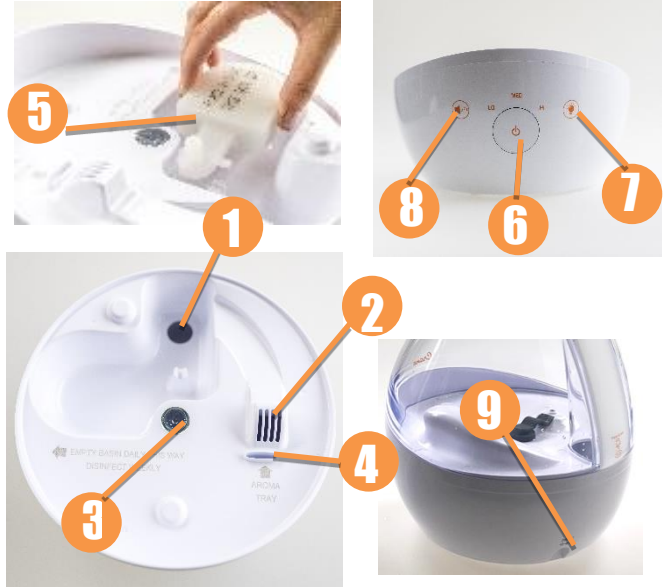


Fig. 2 (Water Tank)

10. Mist Channel Cover (removable for easy cleaning)
11. Silicone Tank Valve (Inside tank)
12. Water Fill Opening (top of tank)

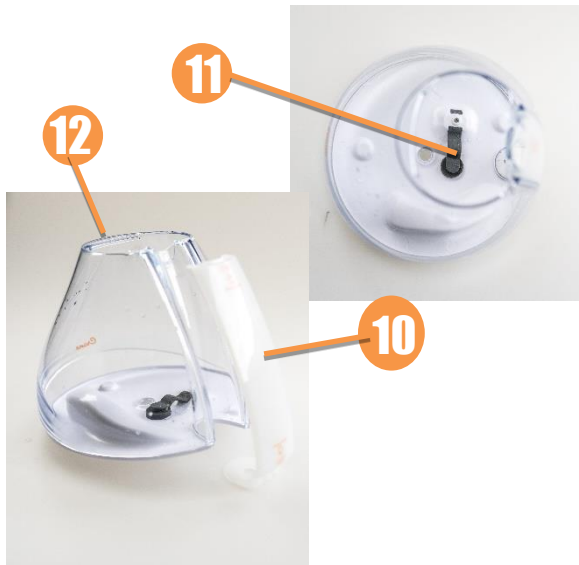


Fig. 3

13. Water Tank Disk(with lip)
 14. Mist Nozzle
 15. Detachable AC Adaptor Cord
 16. Vapor Pad (1)- For aroma tray.
- *Vapor Pads available on Crane website**



TECHNICAL SPECIFICATIONS

Adaptor Voltage Rating	Input: 100V -240VAC, Output: 24VDC 1.0A
Humidifier Voltage Rating	24 VDC, 1.0A
Frequency	60Hz
Water Tank Capacity	Approx. 1 Gallon / 3.78 Liter
Run Time Per Tank	Up to 24 hours
Humidifying Capacity	Up to 500 sq. ft. / 46.45 m ²
Noise Level	< 37 decibels from 3 ft away

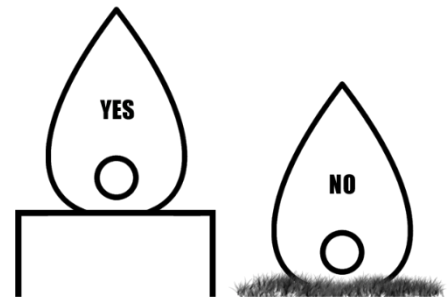
BEFORE EACH USE:

CHECK HUMIDIFIER PLACEMENT:

Place the Humidifier on an elevated, non-metallic, lint-free, waterproof, level surface at least 2 feet above the floor.

• **DO NOT PLACE ON CARPET OR TOWEL.** The fan vent is located on the bottom of the humidifier base. The fan vent **MUST NOT** be obstructed.

• **DO NOT PLACE ON WOOD SURFACE** or near furniture that can be damaged by too much moisture.



CHECK WATER LEVEL SENSOR:

Make sure the Water Level Sensor Float is secured properly and not obstructed.
(Page 4 – Fig. 1, Part 5)



CAUTION

- **DO NOT** attempt to operate the humidifier without water in the Water Tank.
- **DO NOT** plug or unplug the Power Cord with wet hands as electric shock could occur.

ASSEMBLY & USE

ALWAYS use fresh cool water when in the water tank. **ALWAYS** make sure detachable cord is attached to base. **ALWAYS** ensure the water level sensor float is secure in the base.

1. **WATER LEVEL SENSOR FLOAT** (Page 4, Fig1 #5)- Remove float from plastic bag and place into the base as shown in figure 1. **IMPORTANT: water level sensor must be placed securely in the base (see Troubleshooting).**
2. **WATER TANK** (Page 4, Fig 2)- Place water tank onto the humidifier base ensuring the Crane Logo lines up with the Power Button for proper water tank placement. Fill water into the water fill opening. As shown in figure 2.

ALWAYS HOLD WATER TANK WITH TWO HANDS WHEN FULL.

DO NOT fill water all the way to the rim.

DO NOT use hot water.

DO NOT add any medication, essential oils, vapor pads or salt into the tank.



(Fig. 1)

(Fig. 2)

3. **MIST CHANNEL COVER** (page 4, Fig. 2 #10)-Secure the mist channel cover onto the water tank. You will hear an audible click on top and bottom of the mist channel cover to secure placement.
4. **WATER TANK DISK** (page 4, Fig. 3 #13)-Place the Water Tank Disk, with disk lip down, securely onto water tank opening.
5. **MIST NOZZLE** (page 4, Fig. 3 #14) -Place the mist nozzle securely onto the water tank disk. Direct the mist output by turning the mist nozzle to the direction you want the mist to emit.

Note: Do not attempt to move the humidifier while full Water Tank is placed on the Humidifier Base. Doing so may cause leakage of water and/or Humidifier Base to overflow.

6. **CONNECT AC ADAPTOR CORD into the Plug Port** (page 4, Fig. 3 #15). Plug the power cord into a wall socket and turn on the unit by using the Power Button. **PRESS POWER BUTTON** (page 4, Fig. 1 #6) 1x for low, 2x for medium, 3x for high and 4x to power off.

Note: The Power Indicator Light will illuminate in green indicating that the unit is on.

IMPORTANT: After 20 seconds, the indicator light will turn off but product will continue to run. This feature allows the humidifier to be on without a visible illuminating light.

SET THE CORRECT HUMIDITY OUTPUT: Adjust the mist output so the mist rises up to be absorbed by the room air. If mist drops quickly, use the lower output setting so the mist is rising up.

7. **AUTOSHUT OFF** When the humidifier runs out of water, the Power Indicator Light will turn red and the mist output will stop. This is a safety feature to prevent the humidifier from possibly overheating and damaging the Nebulizer. Turn the humidifier off and unplug the unit before removing and refilling the water tank.

SOUND MACHINE: Lightly Tap

Press 1x for White Noise, 2x for Rain Sound, 3x for Ocean Sound and 4x to power off.

To Adjust Volume of Sound: Press & hold  and volume will cycle between Low to High volume. Release button to set desired volume.

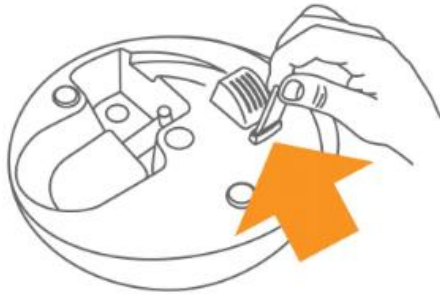
NOTE: When the sound is turned off and then turned back on, the volume will be at the same level.

NIGHTLIGHT FUNCTION: Touch

Press 1 x for steady Red Sleep Support light. Press 2 x light color changes every 10 seconds. Press 3 x to set current light color. Press 4th time to turn the light OFF.

Red Sleep Support Light: Optional steady Red Light may help with better sleep. **Red light** doesn't act as a stimulant. Its low color temperature, far lower than regular sunlight, has a soothing effect on the body for a good night's sleep. Using red light in the evenings may help your body transition into its sleep cycle more naturally

AROMA TRAY: Remove the water tank. Place the sample Crane Vapor Pad (HS-1950/L) into the aroma tray or add essential oils to an unscented pad and the place into the aroma tray as desired. Replace the water tank before running the humidifier. **ALWAYS ensure the water level sensor float is placed securely in the base.**



Only use vapor pad in the aroma tray.
Do not put vapor pad or essential oils in Water tank

VAPOR PAD PRECAUTION

- Not recommended for infants under 10 lbs (4.5 kg).
- For children between 10-22 lbs (4.5 kg) do not use more than 2 pads in a 24 hour period.

A NOTE ABOUT HUMIDITY

- To reduce excessive humidity or condensation, especially in small rooms, leave the room door open and adjust mist intensity to the low output setting.
- Too much humidity in the room may allow moisture to accumulate on surfaces where bacteria and fungi can grow. Moisture that gathers may also damage furniture and walls, especially wallpaper.

MAINTENANCE & CLEANING

Cleaning and disinfecting on a regular basis is very important for maintaining the performance of your humidifier. **NEVER IMMERSE HUMIDIFIER BASE IN WATER.**

IMPORTANT: Water left in the tank or humidifier base when not in use may result in buildup of mineral deposits and bacteria which may inhibit the output efficiency as well as void the warranty. If water remains in the Water Tank for more than a day or two, bacterial growth is possible.

DAILY MAINTENANCE

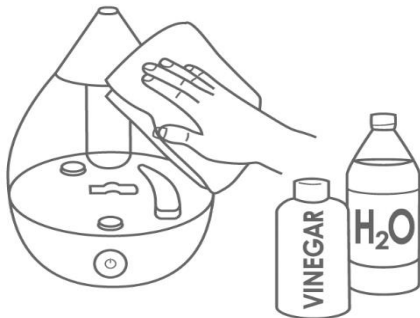
1. Turn off, unplug from outlet and empty water from tank & humidifier base daily.
2. Allow water tank & humidifier base to air dry.
3. Leave water tank disk and mist nozzle off the water tank until ready for next use.

WEEKLY CLEANING

1. **Turn off, unplug from outlet** and empty water from tank & humidifier base. Use a solution of 2 Tablespoons of white vinegar to ½ gal. water, to clean the humidifier
2. **Remove the Mist Channel Cover** by gently pulling from the top of the tank. Clean mist channel cover and mist channel with a white vinegar/ water solution. Wipe mist channel with white vinegar/water solution and rinse clean. **NOTE:** After cleaning, reassemble the Mist Channel Cover see page 6. **Mist Channel Cover** must be secure to operate the humidifier properly.
3. **Remove water tank disk from mist nozzle.** Wipe disk and nozzle with white vinegar/ water solution and rinse.
4. **Fill Water tank** halfway with warm water. Add 2 Tablespoons of white vinegar to water and let tank sit for 30 minutes. **Wipe down the inside of water tank** with the solution using a soft cloth. Water Tank opening allows your hand inside tank for cleaning. Empty tank and rinse with plain water.
5. **Fill humidifier base with warm water**, add 1 tablespoon of white vinegar and let sit for 30 min. Empty base & rinse with plain water. **Always** pour water away from the fan outlet when emptying.
TIP: Clean the nebulizer with a damp cloth or cotton swab after soaking.
6. Allow water tank, mist channel cover & humidifier base to air dry and leave water tank disk and mist nozzle off the tank until the next use.

Easy Cleaning:

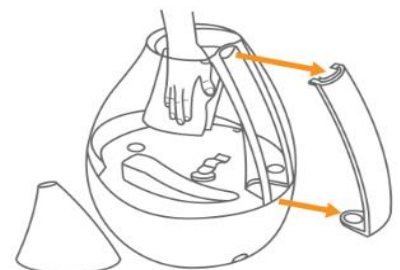
Step 1



Step 2



Step 3






END-OF-SEASON MAINTENANCE & STORING YOUR HUMIDIFIER

1. Turn off, unplug from outlet, and empty water from tank & humidifier base.
2. Follow instructions for weekly cleaning above.
3. Let all parts dry completely.
4. Store humidifier in a cool, dry place

TROUBLESHOOTING

DO NOT attempt to repair the motor yourself.

If the humidifier continues to not operate, please contact Crane Customer Care.

Problem	Solution
Solid RED Indicator Light:	<ul style="list-style-type: none"> ▪ Clean the Water Level Sensor Float: Pull the float from the base by lifting the float firmly. Remove the water level sensor float and clean with white vinegar/water solution. Replace water level sensor float by pressing down firmly back into position in the humidifier base. (Page 4 – Fig. 1 #5)
Humidifier Does Not Have Any Power:	<ul style="list-style-type: none"> ▪ Ensure AC Adaptor is fully connected to the plug port and is properly plugged into a power outlet / try another power outlet. ▪ If Power On indicator light does not come on, contact Customer Care.
Flashing RED Indicator Light:	<ul style="list-style-type: none"> ▪ The water level sensor float is not placed in the base and there is no water in the base. ▪ Ensure the water level sensor float is placed securely in the base and replace the full water tank onto the base.
Indicator Light is Green, But There's No Mist:	<ul style="list-style-type: none"> ▪ Complete the weekly cleaning. (Page 8) ▪ Humidifier should be placed on a hard-flat surface & fan vent should not be blocked. ▪ The humidifier base might be overfilled: Remove the tank, empty the base & replace the filled tank on the empty base. ▪ Ensure the water level sensor float is placed securely in the base.
White Dust Appears & Settles Outside the Humidifier:	<ul style="list-style-type: none"> ▪ Area tap water may have too many minerals. Change to filtered or distilled water.
No Sound from  icon	<ul style="list-style-type: none"> ▪ Gently TAP the  icon. Do NOT long press the  icon
Humidifier is Leaking:	<ul style="list-style-type: none"> ▪ From WATER TANK DISK/MIST NOZZLE: Turn mist level down. ▪ From TANK: Check for possible cracks in the tank or around the seam of the tank. ▪ From HUMIDIFIER BASE: Call Customer Care.

NOTE: Spare Parts can also be purchased online at www.crane-usa.com

CRANE CUSTOMER CARE

CALL US: 1-888-599-0992 (Mon-Fri 9:00am – 4:00pm CST)

EMAIL US: customer-service@crane-usa.com

LIVE CHAT: available at www.crane-usa.com

CRANE WARRANTY

For more information regarding the warranty policy,
please visit our website: www.crane-usa.com/customer-service

LIMITED WARRANTY

Thank you for purchasing a Crane product which has been tested to meet our stringent quality standards. This product is warranted to be free from manufacturing defects under normal use and conditions for 1 year.

**PLEASE CONTACT US BEFORE RETURNING THIS PRODUCT TO THE STORE.
CALL CRANE CUSTOMER CARE FOR PROBLEMS AND QUESTIONS. WE CAN HELP.**

WARRANTY REQUIRES A DATED PROOF OF PURCHASE.

This warranty is void if the defect is due to accidental damage, misuse, abuse, neglect, improper repair or alteration by unauthorized persons, or a failure to follow operating instructions provided with the product **including the use of essential oils directly into the tank and humidifier base. Only use the vapor pads in the aroma tray.** This warranty does not apply to normal wear and tear or commercial use.

In no event shall liability exceed the purchase price paid by the purchaser of the product. Under no circumstances shall there be liability for any loss – direct, indirect or incidental – or consequential damage arising out of, or in connection with the use of this product.

This warranty is valid only in the 48 contiguous states plus the District of Columbia and excludes Puerto Rico and the Virgin Islands. This warranty is effective only if the product is purchased and operated in the United States of America.

Any instructions or warranty included in this manual may be subject to change without notice. For the most up-to-date instructions and warranty information, please contact us or visit our website.

**TO RECEIVE WARRANTY INSTRUCTIONS AND RETURN AUTHORIZATION,
PLEASE CALL OR EMAIL CRANE CUSTOMER CARE.**

CRANE USA, INC.
1015 Hawthorn Dr., Itasca, IL 60143

Toll Free: 1-888-599-0992
(Monday - Friday 9:00am - 4:00pm CST)
Email: customer-service@crane-usa.com
Website: www.crane-usa.com

Crane

DESIGN FOR BETTER LIVING