

说明书 尺

寸: 55x77mm 折

叠方式: 风折页

User Manual For Carplay Wireless Adapter

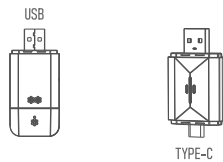
Thank you for purchasing our product. For optimal performance and safety, please read these instructions carefully before operating your product.

Table of Contents	
Summary	1.1
Product Accessories	1.2
Product Operating Instructions	1.3
Product Update System	1.4
Precautions	1.5
Frequently Asked Questions	1.6

1.1 Summary

The wireless carplay adapter converts wired carplay to wireless carplay, realizing the interconnection between iphone and car. You can easily enjoy music, navigation and other functions wirelessly, plug and play, and keep the original car operation. This interconnection provides drivers with more driving pleasure and reduces the frequency of iphone use. We are committed to providing our customers with a safer driving experience.

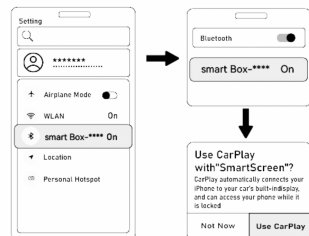
1.2 Product Accessories



(Pictures are for reference only, subject to the real thing)

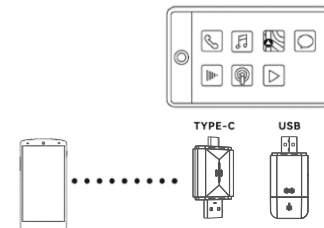
1.3 Product operation instructions

1.3.1 Connect the product with the multimedia data port of the car with the data cable respectively.
1.3.2 Turn on the iphone WiFi Bluetooth, Carplay function.
1.3.3 Turn on the iphone Bluetooth search page, search for Bluetooth display name "smartbox - ****", click on the pairing and connect successfully.



(Pictures are for reference only, subject to the real thing)

1.3.4. After successful pairing, you will be able to use the driving pleasure brought by wireless Carplay.



(Pictures are for reference only, subject to the real thing)

1.3.5. After the wireless carplay adapter connected to the in-vehicle device for the first time, it will be connected automatically the next time.

1.4 Product Update System

1. Turn on the Wi-Fi on your iphone, find the corresponding display name, enter the password "88888888", then click "Connect".
1.1.2 Enter the IP address 192.168.1.101 in Safari browser, then click "meta upgrade", wait a few minutes for the upgrade.
1.1.3 After the upgrade is completed, plug and unplug the box again, ignore the Bluetooth, and reconnect the Bluetooth for use.

1.5 Notes

1.5.1 Iphone model and version requirements: iphone6 and above, iOS 10 and above.
1.5.2 Make sure your car with the factory wired CarPlay more than 800 models to choose from. specific model query: <https://www.apple.com/ios/carplay/available-models/>
1.5.3, Multimedia with CarPlay and Auto function, while the product also supports CarPlay and Auto function, when connecting to the CarPlay function, the multimedia needs to be switched to the CarPlay mode and connected using an Apple phone, when connecting to the Auto function, the multimedia needs to be switched to the AndroidAuto mode and connected using an Android phone.

1.6 Frequently Asked Questions

- Why doesn't the indicator light of the product turn off automatically when the car is turned off?
This product does not have a battery, the exact time the lights go out is determined by the Multimedia USB data port, the lights out time is different for each car.

1. Why can't I always connect?

- Turn on the WiFi Bluetooth and Carplay switches at the same time.
 - The car multimedia must support wired CarPlay function.
 - Whether the product indicator light is on.
 - Whether the product is connected to the multimedia data interface.
- 1.3.3 Can the product be paired with more than one iphone?
A: Yes, if you want to change the iphone, you need to turn off the Bluetooth and function switch of the used iphone.
1.4 Can't it reconnect automatically?
A: The product can only connect to the last paired device, and you can't turn off the WiFi and Bluetooth switch.
1.5.5 No sound when you call?
A: You can select the sound output mode as Carplay mode in the iphone call page, some cars need to set it manually.
1.6.6 Sound delay, navigation delay?
A: Playing music and navigation use iphone traffic, if the iphone signal is not stable, the above problems will occur.
1.7 Why is the connection suddenly disconnected?
A: The product data line has a limiting function, the disconnection is caused by the loosening of the car data port and the data line.
1.8 Why can't Carplay start or the device is incompatible/unrecognized USB?
A: a. Re-plug the device and restart the multimedia.
b. Replace the data cable.

User Manual For Android Auto Wireless Adapter

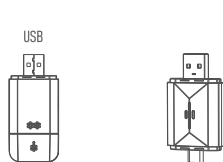
Thank you for purchasing our product. For optimal performance and safety, please read these instructions carefully before operating your product.

Table of Contents	
Summary	1.1
Product Accessories	1.2
Product Operating Instructions	1.3
Product Update System	1.4
Precautions	1.5
Frequently Asked Questions	1.6

1.1 Summary

Wireless Smart Car Adapter converts wired Android Auto to wireless Android Auto realizing the interconnection between phones and car. You can easily enjoy music, navigation and other functions wirelessly, plug and play, and keep the original car operation. This interconnection provides drivers with more driving pleasure and reduces the frequency of phones use. We are committed to providing our customers with a safer driving experience.

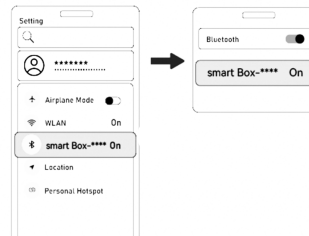
1.2 Product Accessories



(Pictures are for reference only, subject to the real thing)

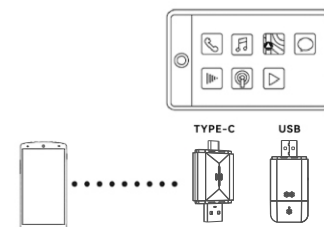
1.3 Product operation instructions

1.3.1 Connect the product with the multimedia data port of the car with the data cable respectively.
1.3.2 Open the cell phone WiFi Bluetooth function switch.
1.3.3 Open the cell phone Bluetooth search page, search for Bluetooth display name "smartbox - ****", click on the pairing and connect successfully.



(Pictures are for reference only, subject to the real thing)

1.3.4. After successful pairing, you will be able to use the driving pleasure brought by wireless AndroidAuto.



(Pictures are for reference only, subject to the real thing)

1.3.5. After the Smart Box is connected to the in-vehicle device for the first time, it will be connected automatically the next time.

1.4 Product Update System

1.4.1 Connect the Android Smartbox to the vehicle, turn off the Bluetooth and WiFi switch of the mobile phone, then turn on the WiFi switch, find the WiFi name, enter the password "88888888", open Google Chrome, enter the IP address 192.168.1.101 in the address bar, click Switch P2P, toggle P2P, the prompt P2P toggle OK appears!! 1.4.2 Open the mobile phone's WiFi - Wi-Fi Direct - choose the display name of the box and connect. Open Google Chrome, enter the IP address 192.168.1.101 in the address bar, and click Update to start the update. Unplug the device and successfully re-pair it so that you can use it normally.

1.5 Notes

1.5.1 Mobile phone model and version requirements: Overseas version of Android phone, Google phone Android 11 and above version.
1.5.2 The original car must support wired AndroidAuto function.
1. Multimedia with CarPlay and Auto function, while the product also supports CarPlay and Auto function, when connecting to the CarPlay function, the multimedia needs to be switched to the CarPlay mode and connected using an Apple phone; when connecting to the Auto function, the multimedia needs to be switched to the AndroidAuto mode and connected using an Android phone.

1.6 Frequently Asked Questions

- 1.6.1 Why doesn't the indicator light of the product turn off automatically when the car is turned off?
A: This product does not have a battery, the exact time the lights go out is determined by the Multimedia USB data port, the lights out time is different for each car.

1. Why can't I always connect?

- Turn on the WiFi Bluetooth switches at the same time.
 - In-car multimedia must support wired AndroidAuto function.
 - Whether the product indicator light is on.
 - Whether the product is connected to the multimedia data interface.
- 1.4.3 Can the product be paired with more than one cell phone?
A: Yes, if you want to change the cell phone, you need to turn off the Bluetooth and WiFi function switch of the used cell phone.
2. Can't it reconnect automatically?
A: The product can only connect to the last paired device, and you can't turn off the WiFi and Bluetooth switch.
3. I can't hear when I make a call?
A: In the call page, you need to select the sound output as AndroidAuto mode. Some cars need to connect the cell phone to the Bluetooth of the car.
4. Sound delay, navigation delay?
A: Playing music and navigation use cell phone traffic, if the cell phone signal is not stable, the above problems will occur.
5. Why is the connection suddenly disconnected?
A: The product data line has a limiting function, the disconnection is caused by the loosening of the car data port and the data line.
6. Why can't AndroidAuto start or the device is incompatible /unrecognized USB?
A: a. Re-plug the device and restart the multimedia.
b. Replace the data cable.

