



Instructional Manual

Scene Switch

User Manual



1 Button 2 Button 3 Button 4 Button

- Bitte scannen Sie den QR-Code, um das deutsche Handbuch, das Installationsvideo und die Funktionseinführung zu erhalten
- Escanee el código QR para obtener el manual en español, el video de instalación y la introducción de la función
- Veuillez scanner le code QR pour obtenir le manuel en el video de instalación y la introducción de la función
- Отсканируйте QR-код, чтобы получить руководство на русском языке, видео по установке и описание функций
- Scansionare il codice QR per ottenere il manuale in italiano, il video di installazione e la guida alle funzionalità. Video di installazione e funzionalità
- Leia o código QR para obter o manual em português, o vídeo de instalação e a introdução das funções
- Zeskanuj kod QR, aby uzyskać instrukcję obsługi, film instalacyjny i wprowadzenie do funkcji
- من فضلك قم بمسح رمز الاستجابة السريعة (QR-code)، للحصول على دليل المستخدم باللغة العربية وفيديو التثبيت ووصف للوظائف



请扫描二维码获取中文的说明书、安装视频及功能介绍

Features



Scene Setting



Remote Control



Battery Power



Mechanical Push
ON/OFF Switch

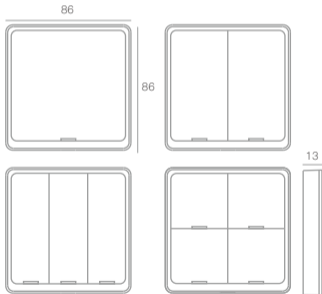
Product Introduction

- This scene switch is powered by battery, which is developed under ZigBee/Bluetooth communication. After connecting with ZigBee/Bluetooth gateway and adding on Smart life App, it allows you to quickly "set the scene" for a particular room or living scene, like Reading, Movie, and so on.

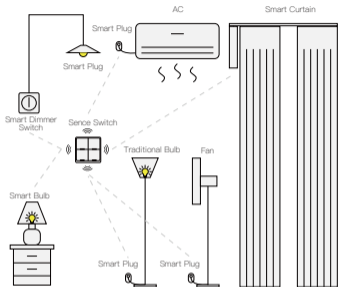
- Scene switch is a time and energy-saving alternative to the traditional hard-wired switch, the push-Button It can be stick on the wall or put it on everywhere you like.

Specification

Input Power:	CR 2430 button battery
Communication:	ZigBee 802.15.4/BT Mesh
Dimension:	86*86*13mm
Standby Power:	10uA
Working Temperature:	-10°C~45°C
Working Humidity:	<90%RH
Button lifecycle:	50K



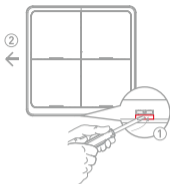
Scene Switch with Your Smart Home



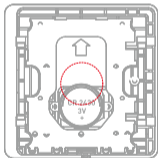
Installation

Please follow this instruction to install battery or remove battery tap when first time use this product.

Installation



1. Lift the pick with your finger or a tool, and slide left at same time.



2. Remove the old battery when it runs out, then insert the new CR2430 battery into the slot.

After replacing the battery, the smart scene switch will automatically reconnect to the ZigBee/BLE MESH network and resume normal working status, and the user does not need to make any APP settings.

Fix it as Where as You Want



Bedroom



Living Room



Kitchen



Bathroom

Connection & Operation

• Indicator LED

Press the button, the indicator will turn on.

The indicator flash quickly, it means that the switch under process of network connecting

• Scene Switch Operate

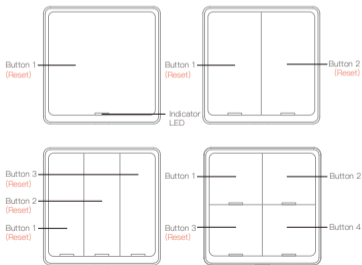
Each one button can be adapted upto three different scenarios through the APP

Single Click: Activate the 1st scene

Double Click: Activate the 2nd scene

Long Hold 5s: Activate the 3rd scene

Press and Hold Reset Button for 10s get into pair mode, LEDs will quick flash



APP Operation

1 Search the App in the store or scan the QR code on the package / manual to download and install the App.



2 Register and login

If you download for the first time, please click the “register” button to register your account. If you have an account, click the “login” button.

China Mobile 4G 100% 18:13:07 PM

← Mainland China

Register

China +86 >

Mobile number/e-mail address

Obtain verification code

I agree with Service Agreement and Privacy Policy

China Mobile 4G 100% 18:13:07 PM

←

Log in

China +86 >

Mobile number/e-mail address

Password

Log in

Verification code login Forget password

Log in with social media account

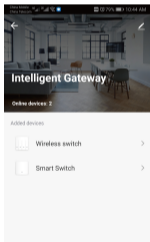
I agree with Service Agreement and Privacy Policy

APP Operation

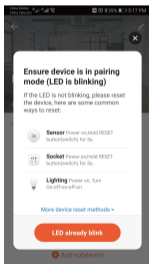
③ Add devices

Note: If what you choose is the ZigBee or Bluetooth version, then a ZigBee or Bluetooth hub is required for connection first before successful pairing.

Connect the device to the power supply, press and hold the Reset Button to put the device into the network configuration mode, and ensure that the mobile phone is connected to the network. Open the app, on the “smart gateway” page, click “add subdevice”, and click “LED already blink”.



+ Add subdevice

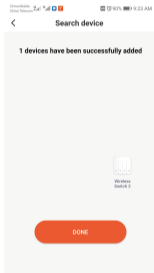


+ Add subdevice

APP Operation

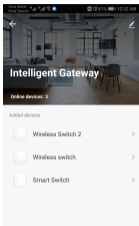
④ Wait for device networking to succeed, Click “DONE” to add the device successfully.

*NOTE: If you fail to add the device, please move the gateway closer to the product and reconnect the network after powering on.



⑤ After connecting the network successfully, you will see the Intelligent Gateway page, choose the WIRELESS SWITCH 2 to enter the controlling page, then choose “Add intelligence” enter to the setting mode

APP Operation



+ Add subdevice



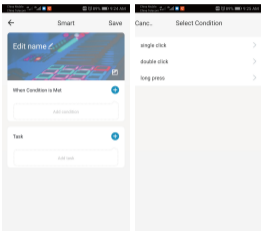
To create a device trigger to experience the fun of a touch

Create Intelligence



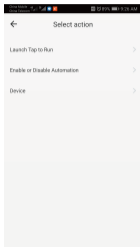
APP Operation

⑥ Choose “Add condition” to choose the the controlling condition, such as “Single click”, the choose “Add task” choose the controlling action.



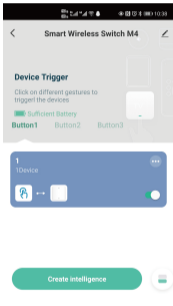
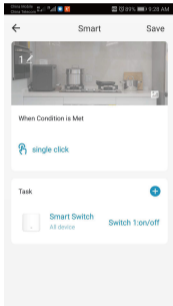
APP Operation

7 Such as choose the On/Off status of the switch.



APP Operation

8 Save your collocation, then you could use the scene switch to control the light.



Note:

UI interface or functions may change according to firmware version or application scenarios, the actual APP interface shall prevail.

FAQ

1. Why does the device fail to link to the APP?

Q1: ZigBee products work with the MOES/TUYA ZigBee gateway needed;

Q2: Check whether the router connected to the gateway is connected to the external network. Ensure that the Wi-Fi signal of the gateway is good and try to connect the gateway again .

Q3: Check whether the device is too far away from your gateway or other ZigBee devices to form a mesh network.Keep the ZigBee gateway and the ZigBee device close as recommended,where the distance should be moderate (less than 5 m).

Q4: Check whether the device enters the network distribution mode.

2.After the device is installed, why is the light not responding when I click the switch button?

Q1: Please cut off the power supply and check whether the wiring is correct according to the manual.

3.When the Zigbee gateway is not connected to the Internet, can devices on the Zigbee gateway interact with each other locally?

Q1:If the linkage scenario is set in advance when the ZigBee gateway is connected to the extranet and the App prompts for local linkage after setting the scenario, then the ZigBee gateway can be linked locally as long as any scenario is triggered when there is no extranet.

SERVICE

Thank you for your trust and support to our products, we will provide you with a two-year worry-free after-sales service (freight is not included), please do not alter this warranty service card, to safeguard your legitimate rights and interests. If you need service or have any questions, please consult the distributor or contact us.

Product quality problems occur within 24 months from the date of receipt, please prepare the product and the packaging, applying for after-sales maintenance in the site or store where you purchase; If the product is damaged due to personal reasons, a certain amount of maintenance fee shall be charged for repair.

We have the right to refuse to provide warranty service if:

1. Products with damaged appearance, missing LOGO or beyond the service term
2. Products that are disassembled, injured, privately repaired, modified or have missing parts
3. The circuit is burned or the data cable or power interface is damaged
4. Products damaged by foreign matter intrusion (including but not limited to various forms of fluid, sand, dust, soot, etc.)

RECYCLING INFORMATION

All products marked with the symbol for separate collection of waste electrical and electronic equipment (WEEE Directive 2012/19 / EU) must be disposed of separately from unsorted municipal waste. To protect your health and the environment, this equipment must be disposed of at designated collection points for electrical and electronic equipment designated by the government or local authorities. Correct disposal and recycling will help prevent potential negative consequences for the environment and human health. To find out where these collection points are and how they work, contact the installer or your local authority.



WARRANTY CARD

Product Information

Product Name _____

Product Type _____

Purchase Date _____

Warranty Period _____

Dealer Information _____

Customer's Name _____

Customer Phone _____

Customer Address _____

Maintenance Records

Failure date	Cause Of Issue	Fault Content	Principal