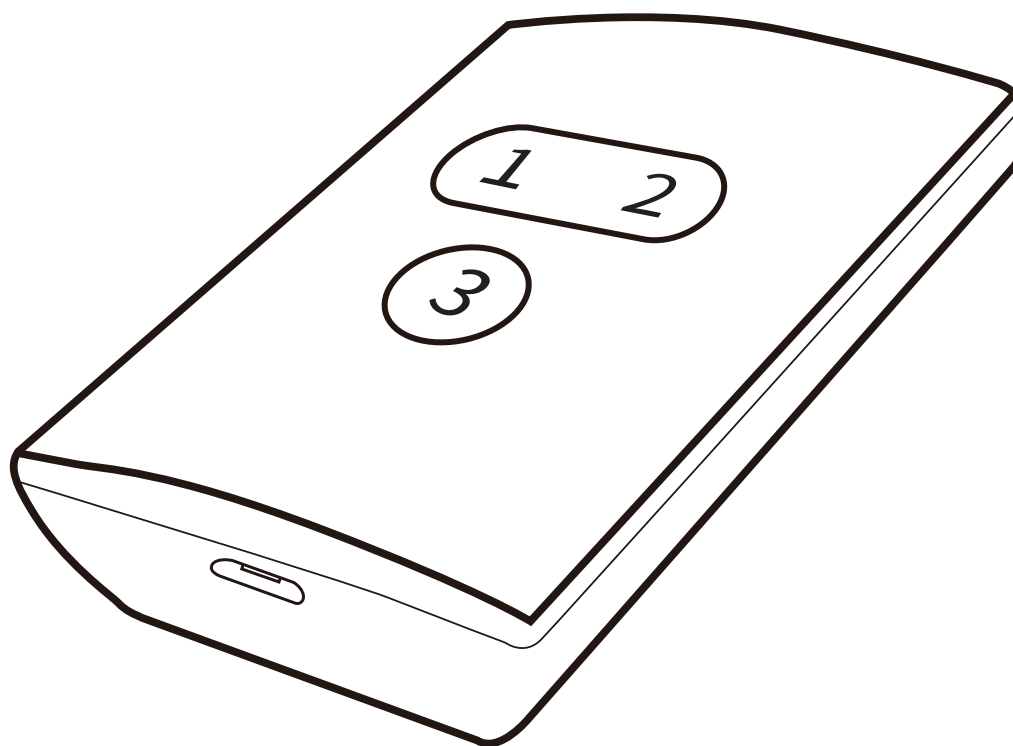


Smart Button ZB2

User Manual

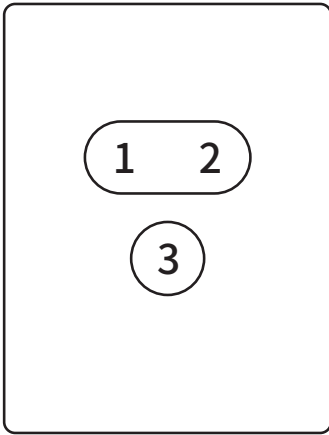


THIRD REALITY

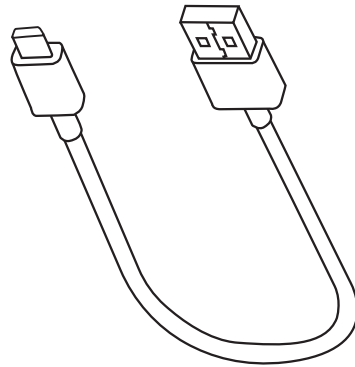
Contents

Package Contents	01
Specifications	01
Factory Reset	02
Setting up your Smart Button ZB2	02
Pairing with Home Assistant	03
Troubleshooting	08
FCC Regulatory Conformance	09
RF Exposure	09
Limited Warranty	09

Package Contents



Smart Button ZB2 ×1



Micro-USB Charging Cable ×1



Quick Start Guide ×1

Specifications

Model Number	3RSB01085Z
Wireless Connectivity	Zigbee 3.0
Frequency	2.4 GHz
Temperature Range	0°C~45°C
Input	5V 500mA

Factory Reset

Press and hold buttons 1 and 2 for 10 seconds until the device beeps three times, indicating that it is in pairing mode.

Setting up your Smart Button ZB2

1. Follow instructions to set up your compatible Zigbee hub.
2. Use the Micro-USB charging cable included in the package to connect the button to a power adapter (not included) to activate the Smart Button ZB2.
3. Press and hold buttons 1 and 2 for 10 seconds, the Smart Button ZB2 will be activated once it beeps three times. The device will automatically enter pairing mode.

Note: It will exit pairing mode automatically if not successfully paired within 3 minutes, to put it into pairing mode again, press and hold buttons 1 and 2 for 10 seconds until the device beeps three times, indicating that it is in pairing mode.

4. After the pairing is completed, the device will beep once. you can create routines in the corresponding smart home App or platform to control other connected devices. THIRDDREALITY Smart Button ZB2 features three buttons (button 1 & button 2 & button 3), each supporting three control settings: Pressed, Double Pressed and Held.

Note: When charging, please connect the button to a power adapter (not included) using the Micro-USB charging cable provided in the package. The Smart Button ZB2 will be fully charged until it beep twice.

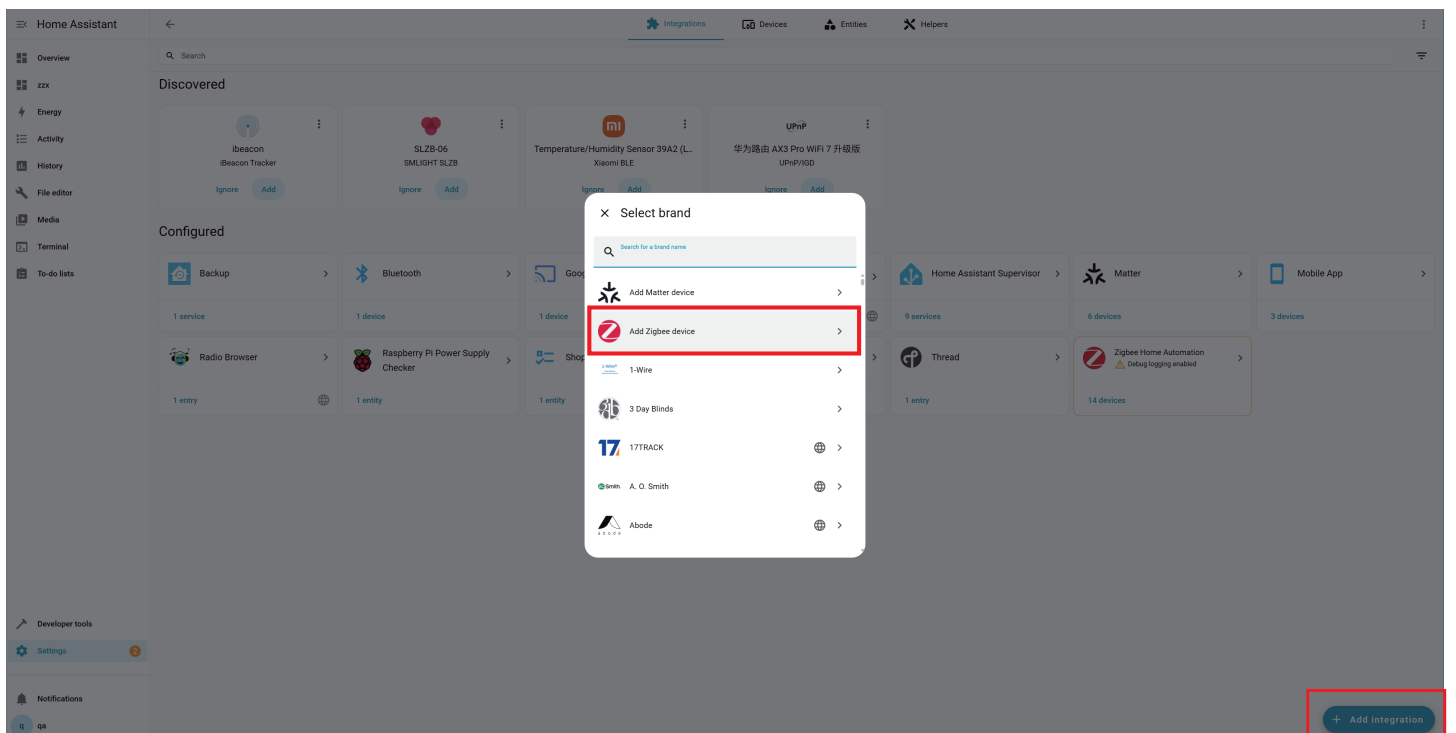
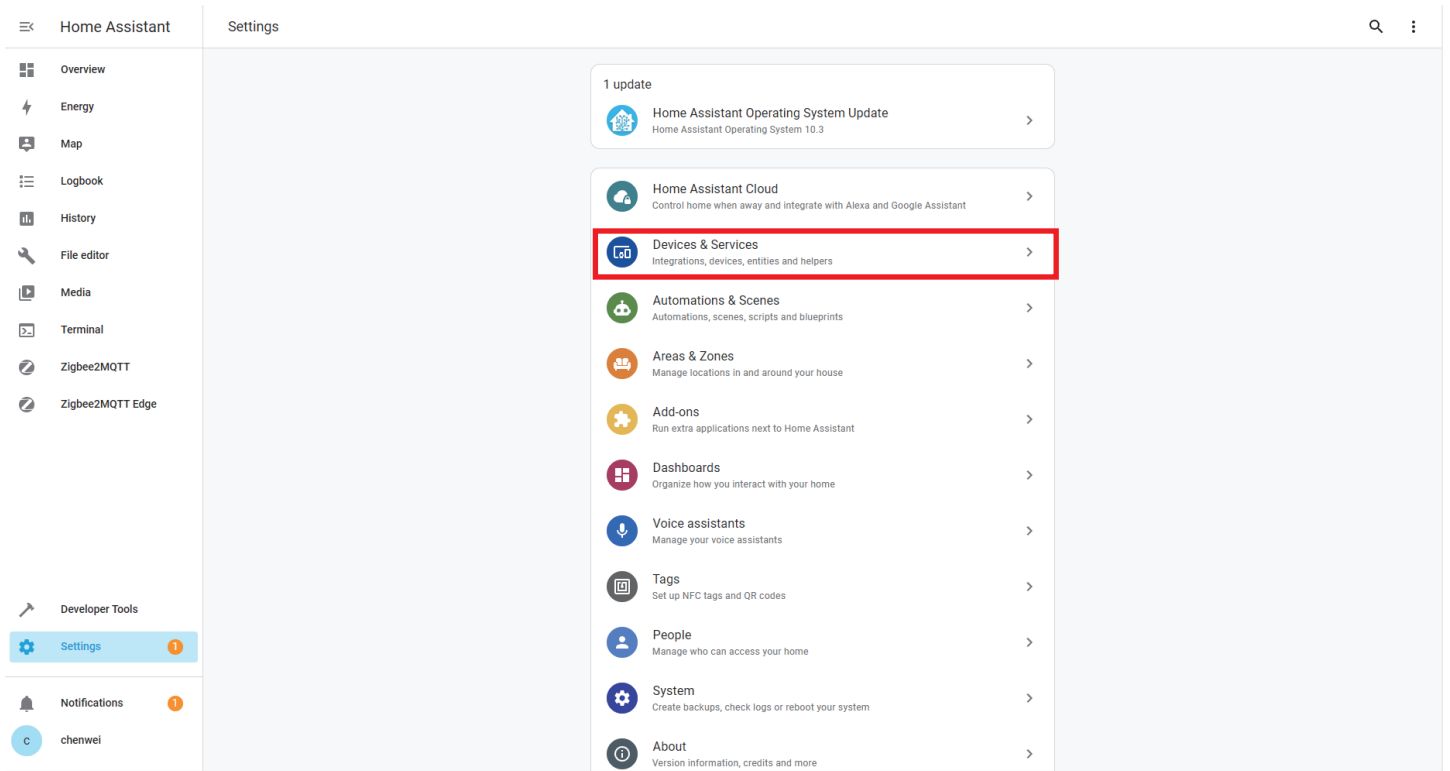
Pairing with Home Assistant

Device: Zigbee dongle



Zigbee Home Automation

1. Press and hold buttons 1 and 2 for 10 seconds, the Smart Button ZB2 will be activated once it beeps three times. The device will automatically enter pairing mode.
2. In Zigbee Home Automation, go to "Configuration" page, click "integration". Then click the "Devices" on the Zigbee item, then click "Add Devices".
3. After the pairing is successful, it will be shown as "Third Reality, Inc 3RSB01085Z" on the page.
4. Back to "Devices & Services" page, click the device list under the "Hub Smart Home Controller" button, then you can find the Smart Button ZB2 added before. Click to enter in the control interface to operate the Smart Button ZB2.
5. You can add "Automated Actions" and check device status on the "Device" page.



Device	Area	Integration	Manufacturer	Model	Battery
240-2-3	JY	Zigbee Home Automation	Third Reality, Inc	3RPS01083Z	100%
240-2-4	JY	Zigbee Home Automation	Third Reality, Inc	3RPS01083Z	100%
240-2-5	JY	Zigbee Home Automation	Third Reality, Inc	3RPS01083Z	100%
240-2-6	JY	Zigbee Home Automation	Third Reality, Inc	3RPS01083Z	-
240-2-7	JY	Zigbee Home Automation	Third Reality, Inc	3RPS01083Z	-
240-2-8	JY	Zigbee Home Automation	Third Reality, Inc	3RPS01083Z	100%
240-2-9	JY	Zigbee Home Automation	Third Reality, Inc	3RPS01083Z	100%
240-2-10	JY	Zigbee Home Automation	Third Reality, Inc	3RPS01083Z	100%
ho-240	-	Zigbee Home Automation	Third Reality, Inc	3RPS01083Z	96%
ho-button-1	-	Zigbee Home Automation	Third Reality, Inc	3RPS238Z	99%
LJ2RWS188Z	-	Zigbee Home Automation	Third Reality, Inc	3RWS188Z	83%
Texas Instruments CC2652	-	Zigbee Home Automation	Texas Instruments	CC2652	-
Third Reality, Inc 3RCB01057Z	-	Zigbee Home Automation	Third Reality, Inc	3RCB01057Z	-
Third Reality, Inc 3RPS01083Z	-	Zigbee Home Automation	Third Reality, Inc	3RPS01083Z	100%
Third Reality, Inc 3RSB01085Z	-	Zigbee Home Automation	Third Reality, Inc	3RSB01085Z	100%

Developer tools

Settings

Notifications

0

+ Add device

Overview

zxx

Energy

Activity

History

File editor

Media

Terminal

To-do lists

Developer tools

Settings

Notifications

0

100%

Device info

3RSB01085Z
by Third Reality, Inc

Connected via [Texas Instruments CC2652](#)

Firmware: 0x00000009

Zigbee: FD:00:2B:2C:02:B6:34:1C

Zigbee info

Zigbee Home Automation

[Reconfigure](#)

Configuration

Firmware Unknown

[Add to dashboard](#)

Activity

February 2, 2026

Third Reality, Inc 3RSB01085Z Firmware became unknown
11:18:58 AM - 22 hours ago

Third Reality, Inc 3RSB01085Z Firmware became unavailable
11:18:47 AM - 22 hours ago

Third Reality, Inc 3RSB01085Z Firmware turned on
11:17:28 AM - 22 hours ago

Automations

No automations have been added using this device yet. You can add one by pressing the + button above.

Scenes

No scenes have been added using this device yet. You can add one by pressing the + button above.

Scripts

No scripts have been added using this device yet. You can add one by pressing the + button above.



Zigbee2MQTT

1. Press and hold buttons 1 and 2 for 10 seconds, the Smart Button ZB2 will be activated once it beeps three times. The device will automatically enter pairing mode.
2. Permit join to start Zigbee pairing in Zigbee2MQTT.
3. After the pairing is successful, it will be shown as "Smart Button ZB2" on the page.
4. Back to "Devices" page, then you can find the Smart Button ZB2 added before. Click to enter in the control interface to operate the Smart Button ZB2.
5. You can add "Scene" and check device status on the "Device" page.

The screenshot displays the Home Assistant interface for Zigbee2MQTT. The left sidebar contains navigation options: Overview, 地图 (Map), Energy, Activity, History, File editor, Media, Terminal, To-do lists, Zigbee2MQTT, Developer tools, Settings, and Notifications. The main content area is titled 'Zigbee2MQTT' and shows an 'Overview' section with statistics for Devices (10), Router (6), and End device (4). Below this is a 'Recent activity' log. A 'Scenes: group1' section shows several scenes: Scene 0, on 1-3blue 4-6purple, off 1-6, Scene 112, and Scene 113. The 'Devices' section is visible at the bottom, showing various smart devices with their status and battery levels. A red box highlights the 'Permit join' button in the top left of the device list area.

Home Assistant << Zigbee2MQTT

Show: **Recent activity** Group scenes

Overview

Devices **11** Router **6** End device **5**

Recent activity

LJ0x4ce175523580000—linkquality: 240 → 244, power_factor: 0.26 → 0.44 2026/2/3 09:25:41
 LJ0x4ce175523580000—linkquality: 252 → 240, state: OFF → ON 2026/2/3 09:25:23
 0xb40ecfd766b80000— Device left 2026/2/3 09:24:40
 0xb40ecfd766b80000— illumination: 50 → 48, linkquality: 160 → 156 2026/2/3 09:24:39
 0xb40ecfd766b80000— illumination: 51 → 50 2026/2/3 09:24:39
 0xb40ecfd766b80000— illumination: 53 → 53, linkquality: 164 → 160 2026/2/3 09:24:38
 0xb40ecfd766b80000— illumination: 54 → 53, linkquality: 176 → 164 2026/2/3 09:24:37
 0xb40ecfd766b80000— illumination: 57 → 54, linkquality: 164 → 176 2026/2/3 09:24:36
 0xb40ecfd766b80000— illumination: 60 → 57, linkquality: 172 → 164 2026/2/3 09:24:35
 0xb40ecfd766b80000— illumination: 62 → 60 2026/2/3 09:24:33

Scenes: group1

Scene 0 on 1-3blow 4-6purple off 1-6 Scene 112 Scene 113

0x7cb94c631f920000 Smart Color Button Z11 164

0xf000282c02b6341c Smart Scene Button S3 216 100%

0xffffb40e0601def7 Smart 3ch Motion Sensor 208 38%

light-3 勿删 Smart Color Button Z11 244

light-5 勿删 Smart Color Button Z11 255

light-6 勿删 Smart Color Button Z11 240

LJ0x4ce174df20af0000 Smart Plug UZ1 200

LJ0x4ce175522580000 Smart Plug E3 244

LJ0x4ce17552267c0000 Smart WaterLeak Sensor WL2 160 100%


LJ0x4ce175526a770000 Smart air pressure sensor 232 100%

LJ0xffffb40e0600cb74 Third Reality Blind Gen2 200 100%

Home Assistant << Zigbee2MQTT

0xf000282c02b6341c


About Exposes Bind Reporting Settings Settings (specific) State Clusters Groups Scene Dev console



0xf000282c02b6341c [Supported: status](#) Interview state: ●

[Edit description](#)

EndDevice 0xf000282c02b6341c	Network address 0x7712 Network address in decimal format: 30482	Power 100% Battery
Zigbee Model 3RSB01085Z Third Reality, Inc. (Smart Scene Button S3)	Model 3RSB01085Z Third Reality	Firmware ID 1.00.09 N/A
Firmware version 9 App: 0.0 build 0 Stack: 0.0 build 9	Last seen Disabled Availability: Disabled	
MQTT zigbee2mqtt/0xf000282c02b6341c		Recent activity linkquality: 240 → 216 2026/2/3 09:23:19

Report problem 

Troubleshooting

1. **How to check if the device is fully charged?**

The Smart Button ZB2 will be fully charged until it beep twice.

3. **Device won't power on?**

Recharge the battery, ensure it is installed correctly, and note that low temperatures may reduce performance.

4. **Cannot charge / No charging response?**

Use the original charger, check the charging port, and wait a few minutes in case of over-discharge protection.

FCC Regulatory Conformance

This device complies with part 15 of the FCC rules. Operation is subject to the following two conditions: (1) this device may not cause harmful interference, and (2) this device must accept any interference received, including interference that may cause undesired operation.

Changes or modifications not expressly approved by the party responsible for compliance could void the user's authority to operate the equipment.

NOTE: This equipment has been tested and found to comply with the limits for a Class B digital device, pursuant to part 15 of the FCC Rules. These limits are designed to provide reasonable protection against harmful interference in a residential installation.

This equipment generates uses and can radiate radio frequency energy and, if not installed and used in accordance with the instructions, may cause harmful interference to radio communications. However, there is no guarantee that interference will not occur in a particular installation. If this equipment does cause harmful interference to radio or television reception, which can be determined by turning the equipment off and on, the user is encouraged to try to correct the interference by one or more of the following measures:

- Reorient or relocate the receiving antenna.
- Increase the separation between the equipment and receiver.
- Connect the equipment into an outlet on a circuit different from that to which the receiver is connected.
- Consult the dealer or an experienced radio/TV technician for help important announcement.

NOTE: The manufacturer is not responsible for any radio or TV interference caused by unauthorized modifications to this equipment. Such modifications could void the user's authority to operate the equipment.

RF Exposure

This equipment complies with FCC radiation exposure limits set forth for an uncontrolled environment.

This equipment should be installed and operated with minimum distance 20cm between the radiator and your body.

This transmitter must not be co-located or operating in conjunction with any other antenna or transmitter.

Limited Warranty

For limited warranty, please visit

<https://thirdreality.com/faq-help-center/>

For customer support, please contact us at info@3reality.com or visit www.thirdreality.com

For questions on other platforms, visit the corresponding platform's application/support platform.