

Warranty against Defects

In this warranty:

We or us means Gibson Innovations ABN 531 651 059 75, and our contact details are set out at the end of this warranty;

You means the purchaser or the original end-user of the Goods;

Supplier means the authorised distributor or retailer of the Goods that sold you the Goods in Australia or New Zealand; and

Goods means the product or equipment which was accompanied by this warranty and purchased in Australia or New Zealand.

If you require assistance with the operation of the product, its features or specifications please call the Philips Consumer Care Centre on 1300 850 633 in Australia or 0800 639 953 in New Zealand.

Australia: Our Goods come with guarantees that cannot be excluded under the Australian Consumer Law. You are entitled to a replacement or refund for a major failure and for compensation for any other reasonably foreseeable loss or damage. You are also entitled to have the Goods repaired or replaced if the goods fail to be of acceptable quality and the failure does not amount to a major failure. This is not a complete statement of your legal rights as a consumer.

New Zealand: Our Goods come with guarantees that cannot be excluded under the Consumer Guarantees Act 1993. This guarantee applies in addition to the conditions and guarantees implied by that legislation.

Additional Warranty:

In addition to the rights and remedies that you have under the Australian Consumer Law, Consumer Guarantees Act of New Zealand or any other applicable law, we provide the following warranty against defects:

1. If, during the first **12 months** from their date of purchase from the Supplier (**Warranty Period**), the Goods prove defective by reason of improper workmanship or materials and none of your statutory rights or remedies apply, we will repair or replace the Goods without charge.
2. We do not have to repair or replace the Goods under this Additional Warranty if the Goods have been used for a commercial purpose; misused, improperly or inappropriately installed, operated or repaired; abused; damaged; or not maintained in accordance with the manufacturer's instructions.
3. Even when we do not have to repair or replace the Goods, we may decide to do so anyway. In some cases, we may decide to substitute the Goods with a similar alternative product of our choosing. All such decisions are at our absolute discretion.
4. All such repaired, replaced or substituted Goods continue to receive the benefit of this Additional Warranty for the time remaining on the original Warranty Period.
5. This Additional Warranty is limited to repair, replacement or substitution only. As far as the law permits, we will not be liable for any loss or damage caused to property or persons arising from any cause whatsoever.
6. In order to claim under this Additional Warranty you must telephone us on 1300 850 633 in Australia or 0800 639 953 in New Zealand within the Warranty Period. You will be asked for details of the Goods, a description of the defect and your personal details. Upon accepting your claim, we shall assist you with either returning the Goods to the Supplier for replacement or to the most convenient Philips Authorised Service Centre for your Goods to be repaired. In some case we may require that you return to the Goods to us (at the address below) for repair, replacement or substitution.
 - * All returned Goods must be accompanied by satisfactory proof of purchase which clearly indicates the name and address of the Supplier, the date and place of purchase and identifies product. It is best to provide a legible and unmodified receipt or sales invoice.
 - * You must bear any expense for return of the Goods or otherwise associated with making your claim under this Additional Warranty.
7. This warranty is only valid and enforceable in Australia and New Zealand.

Contact us or the place of purchase for further details.

Australia
Gibson Innovations
305/4 Columbia Court,
Baulkham Hills, NSW, 2153

New Zealand

Consumer Care: 1300 850 633
E-mail: PhilipsSound_APAC@gibson.com
Website: www.philips.com/support

Consumer Care: 0800 639 953
Email: PhilipsSound_APAC@gibson.com
Website: www.philips.com/support

Important

Hearing safety



Caution



- To prevent possible hearing damage, do not listen at high volume levels for long periods. Set the volume to a safe level. The louder the volume, the shorter is the safe listening time.

Be sure to observe the following guidelines when using your headphones.

- Listen at reasonable volumes for reasonable periods of time.
- Be careful not to adjust the volume continuously upwards as your hearing adapts.
- Do not turn up the volume so high that you can't hear what's around you.
- You should use caution or temporarily discontinue use in potentially hazardous situations.
- Excessive sound pressure from earphones and headphones can cause hearing loss.

Electric-, Magnetic- and Electromagnetic Fields (EMF)

This product complies with all applicable standards and regulations regarding exposure to electromagnetic fields.

General information

- **To prevent fire or shock hazard:** Always keep this product dry. Do not expose it to excessive heat by heating equipment or direct sunlight.
- No naked flame sources, such as lighted candles, should be placed on the apparatus.
- Do not allow your headset to be submerged in water.
- **To clean the product:** Use a slightly dampened chamois cloth. Do not use cleansing agents containing alcohol, spirits, ammonia or abrasives as they may harm the product.
- Do not disassemble the product.
- Do not operate or store the product in a place where temperature is below 0°C (32°F) or above 40°C (104°F) as this may shorten the battery life.
- This product shall not be exposed to dripping or splashing.
- The mains plug of AC/DC adaptor is used as the disconnect device, the disconnect device shall be readily operable.
- Use only the supplied batteries.
- Other types of rechargeable or alkaline batteries cannot be charged with this system.
- Batteries (battery pack or batteries installed) shall not be exposed to excessive heat such as sunshine, fire or the like.

Declaration of conformity

Hereby, Gibson Innovations declares that this product is in compliance with the essential requirements and other relevant provisions of Directive 2014/53/EU. You can find the Declaration of Conformity on www.p4c.philips.com.

Disposal of your old product and batteries



Your product is designed and manufactured with high quality materials and components, which can be recycled and reused.



This symbol on a product means that the product is covered by European Directive 2012/19/EU.



This symbol means that the product contains batteries covered by European Directive 2013/56/EU which cannot be disposed of with normal household waste.

Inform yourself about the local separate collection system for electrical and electronic products and batteries. Follow local rules and never dispose of the product and batteries with normal household waste. Correct disposal of old products and batteries helps prevent negative consequences for the environment and human health.

PHILIPS

Home cinema

SHD8800
SHD8850



User manual

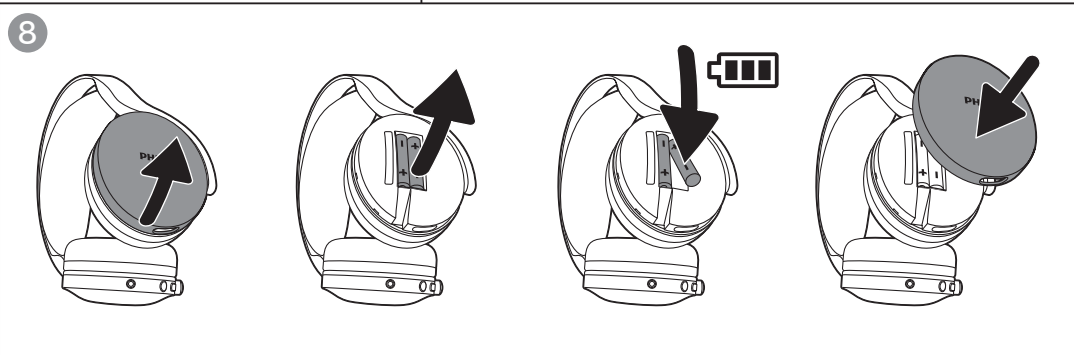
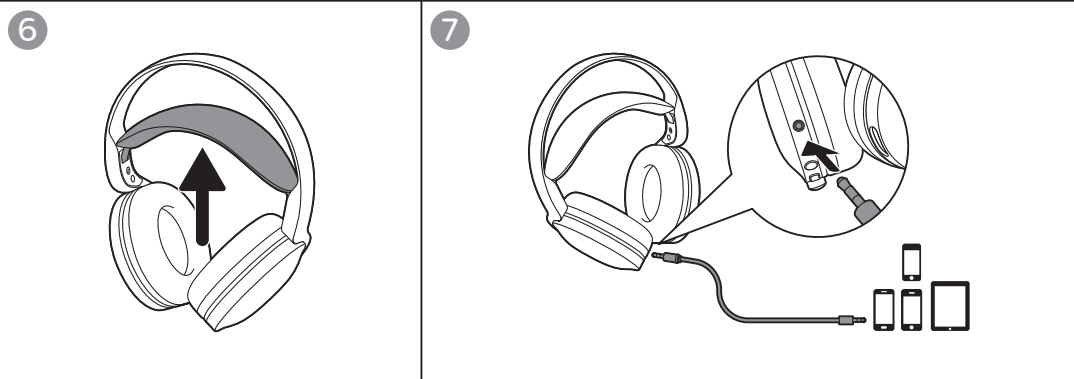
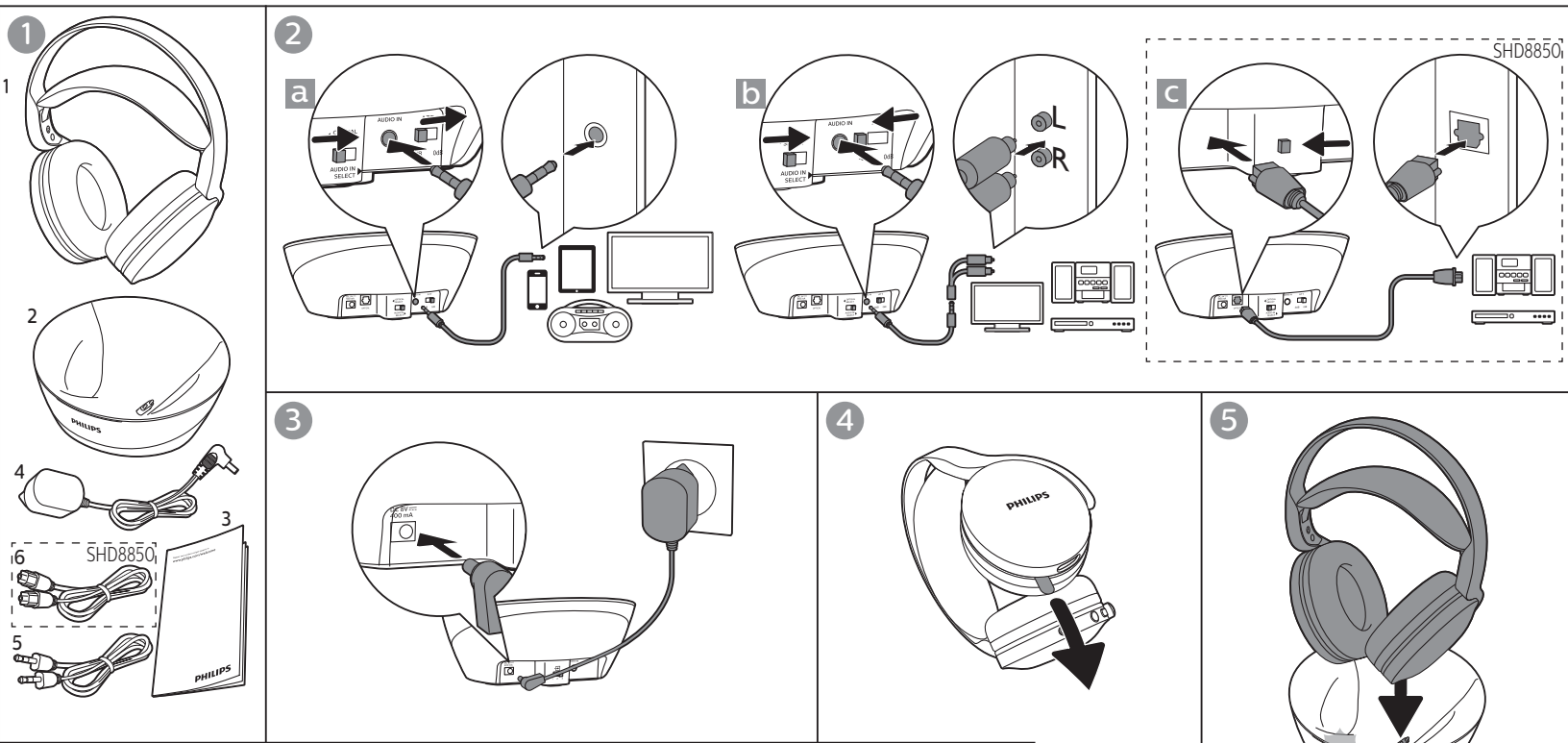
Register your product and get support at

www.philips.com/support

UM_SHD8850/8800
79_16L_Y10
WK1775

2017 © Gibson Innovations Limited. All rights reserved.
This product has been manufactured by and is sold under the responsibility of Gibson Innovations Ltd., and Gibson Innovations Ltd is the warrantor in relation to this product.
Philips and the Philips Shield Emblem are registered trademarks of Koninklijke Philips N.V. and are used under license from Koninklijke Philips N.V.





- to **0dB** (figure 2c).
- For devices with an RCA output, connect one side of an RCA adapter (sold separately) to the RCA output of the audio device, and another side to the supplied 3.5 mm audio cable. Connect the remaining side of the 3.5 mm audio cable to the 3.5 mm audio input of the docking station. Then switch to **AUDIO IN SELECT** and switch **ATT** to **-8dB** (figure 2b).
 - For devices with an optical output (SHD8850 only), connect one side of the supplied optical cable to the optical output of the device, and another side to the optical input of the docking station. Then switch to **OPTICAL SELECT** (SHD8850 only) (figure 2c).
- 2 Connect the power adapter (figure 3).
- 3 Pull the battery tape off before charging (figure 4).
- 4 Charge the headphones (figure 5).

Use your headphones

- 1 The headphones turn on automatically when you wear them on your ears (figure 6).
- For devices with a 3.5 mm audio output, turn up the volume level. If the volume is too low, the auto switch-on of your headphones will not respond.
 - You can also use the headphones with the supplied audio cable to connect to smart devices or for outdoor use (figure 7).
- 2 When the batteries are old or defective, purchase and replace with new rechargeable batteries with the same specifications (figure 8).

LED indications

Status	LED on docking station	LED on headphones
Searching	N/A	Green LED flashing
Connection established	White LED on	Green LED on
Low volume level	White LED flashing slowly*	N/A
Low battery level	N/A	Green LED flashing slowly
Charging	Green LED flashing	N/A
Fully charged	Green LED on	N/A

* The white LED on docking station turns off after 5 minutes.

Sound indications

Low battery level	1 beep per minute*
Reaching maximum volume level.	1 beep

* The headphones beep twice and turn off after 5 minutes.

Technical data

- General specification and features**
- Music time (headphone variation): minimum 20 hours
 - Normal time for a full charge: 6 hours
 - Operating range: Up to 30 meters
 - Optical input / 3.5 mm input switch (SHD8850 only)
 - 2.4 GHz RF solution
 - Hi Res audio (for wired connection only)
 - Auto power on/off
 - Attenuator on/off
- Battery**
- Transmission power: <10 dBm
 - 2 x AAA NiMH 900 mAh rechargeable batteries (Philips SBC HB900S)
- Adapter**
- Philips: YLJXA-A050055, input: 100-240 V~, 50/60 Hz, output: 5 Vdc 550 mA
- Weight and dimensions**
- Headphones: 367 g
 - Docking station: 190 g
 - 74 x 174 x 142 mm (H x W x D)

What's in the box (figure 1)

- 1) Headphones 2) Docking station 3) User manual
 4) AC/DC adaptor 5) 3.5 mm audio cable 6) Optical cable (SHD8850 only)

Connect

Caution

- AAA alkaline batteries can be used to operate the headphones, but cannot be charged with this system.

Note

- Only use Philips rechargeable shortened sleeve NIMH batteries with your headphones. Other types of rechargeable batteries cannot be charged with this system.
- Before using the headphones for the first time, charge the supplied batteries for at least 5 hours.
- If the volume of the audio source is insufficient, the transmitter automatically turns off.
- The docking station does not transmit audio signal when you charge the battery.

- 1 Connect the audio device (figure 2)
- For devices with a 3.5 mm audio output, connect one side of the supplied 3.5 mm audio cable to the 3.5 mm audio input of the docking station and another side to the 3.5 mm audio output. Then switch to **AUDIO IN SELECT** and switch **ATT**