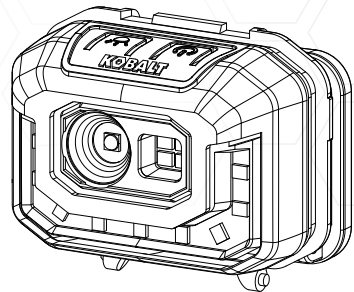


KOBALT



ITEM #5697574
**850 / 1000 LUMENS
 LED HEADLAMP**
 MODEL #5697574

KOBALT and logo design are trademarks or registered trademarks of LF, LLC. All rights reserved.

ATTACH YOUR RECEIPT HERE

Serial Number _____ Purchase Date _____

Questions, problems, missing parts? Before returning to your retailer, call our customer service department at 1-888-3KOBALT (1-888-356-2258), 8 a.m. - 8 p.m., EST, Monday - Sunday. You could also contact us at partsplus@lowes.com or visit www.lowespartsplus.com.

1

PACKAGE CONTENTS

Part	Description	Quantity
1	Headlamp	1
2	3.7V Rechargeable Battery	1
3	Charging Cable	1

SAFETY INFORMATION

WARNING

- These flashlights project a very bright beam of light and can cause eye damage to the user or others. Avoid shining the flashlight directly into anyone's eyes.
- THESE FLASHLIGHTS ARE NOT TOYS – not recommended for use by children without supervision.
- Battery acid leakage can cause personal injury and cause damage to the product and surrounding property. If battery leakage, immediately wash any clothing or other surface that comes in contact with leaked battery acid. If a chemical burn occurs or if irritation persists, seek medical attention. Dispose according to Local, State, or Federal regulations.
- Batteries are to be inserted following the polarity markings on the product.
- NEVER mix alkaline, standard (carbon-zinc), rechargeable (nickel-cadmium) batteries with this product.
- Do not mix old and new batteries.
- Do not dispose of batteries in fire. Battery may explode or leak.
- Promptly remove exhausted batteries from product. Remove batteries before extended storage.
- Non-rechargeable batteries are not to be recharged.

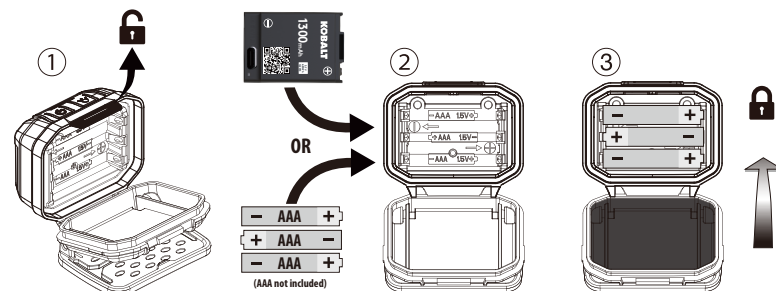
INGESTION HAZARD - Contains small batteries. Keep out of reach of small children. If swallowed, seek immediate medical attention.

LIFETIME HASSLE-FREE GUARANTEE

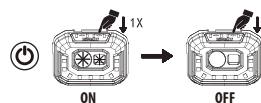
You should never have a problem with your Kobalt Tools. However, if you do, return the item to the place of purchase for a free replacement. No questions asked. This warranty gives you specific legal rights, and you may also have other rights that vary from state to state.

2

OPERATING INSTRUCTIONS



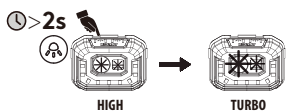
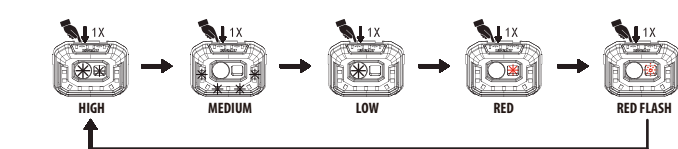
Push Switch **#1**



Push Switch **#1 & #2**

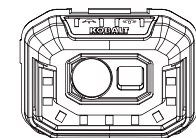


Push Switch **#2**



3

LOW POWER INDICATION

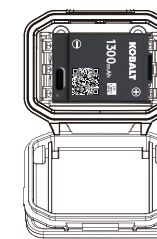


FRONT WHITE LIGHT FLASHES AT BELOW 5% POWER REMAINING

RECHARGEABLE BATTERY



RED INDICATOR CHANGE TO GREEN WHEN FULLY CHARGED



INSTALL THE CHARGED BATTERY

FL1 STANDARD

	TURBO FL1 STANDARD (SPOT + FLOOD)	HIGH (SPOT + FLOOD)	MEDIUM (FLOOD)	LOW (SPOT)
	1000L	850L	350L	100L
	N/A	1.5 hrs	3 hrs	8 hrs
	N/A	120m	20m	45m

4

