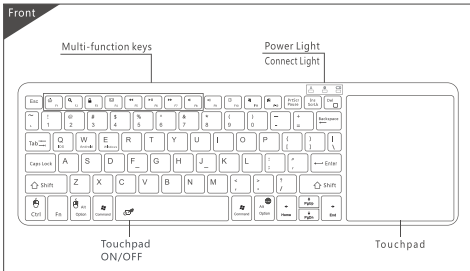


Ultra Slim Bluetooth keyboard

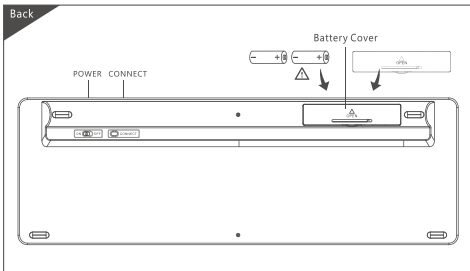
User'S Manual_(1.0)

ZW-51012BT-1

Front



Back



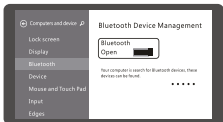
Note:

1. Do not attempt to disassemble the device. Doing so will void the warranty. Please take the battery out if long time no use the keyboard. The battery will need to be changed if stored for a long period of time without usage.
2. The manufacturer reserves the right to amend the specifications without prior notification. The illustrations in the user manual are for reference only. Please operate according to the actual object.

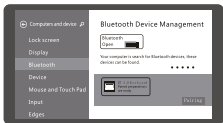
Win8 Connection Instructions:



1. Please open the battery cover from the back of the keyboard then put two AAA dry batteries into the battery cover and slide the power switch on the keyboard to the "ON" position located on the back side, the blue light blink.



2. As shown from the picture, press the match code button for 2 seconds, the blue light will blink intermittently, then the keyboard goes into the pairing status.

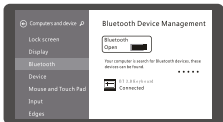


3. Open "Bluetooth" from the settings in start page.

4. Go to the Bluetooth settings of your device and select the keyboard "Bluetooth 3.0 Keyboard" to pair.



5. You may be prompted to enter a passcode. Key in the passcode and press the "Enter" on the Bluetooth keyboard, wait for a while for it to get connected with your device.

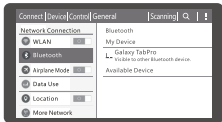


6. Once the connecting is done, you can use your keyboard freely.

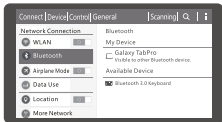
• Android Connection Instructions:



1. Please open the battery cover from the back of the keyboard then put two AAA dry batteries into the battery cover and slide the power switch on the keyboard to the "ON" position located on the back side, the blue light blink.

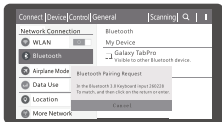


2. As shown from the picture, press the match code button for 2 seconds, the blue light will blink intermittently, then the keyboard goes into the pairing status.



3. Open "Bluetooth" from the settings in start page.

4. Go to the Bluetooth settings of your device and select the keyboard "Bluetooth 3.0 Keyboard" to pair.



5. You may be prompted to enter a passcode. Key in the passcode and press the "Enter" on the Bluetooth keyboard, wait for a while for it to get connected with your device.



6. Once the connecting is done, you can use your keyboard freely.

Remarks : There is no need to enter the passcode again the next time you use it with the same device since the keyboard will search the device and connect with it automatically.

Touchpad Functions



One finger click –left mouse
Drag: One finger clicks twice
and press to move.



Two finger click
– right mouse



Three finger click
– middle button



Two finger stretch
– Zoom



Two finger slide –
mouse wheel
Two finger slide left/right
–back/forward



One finger swipe down from
the top edge – toggle the app
One finger swipe in from
the left edge – switch to last
application
One finger swipe in from
the right edge – toggle
the charm



Three fingers slide left/right
– back/ forward
Three fingers slide down
– show/hide desktop
Three fingers slide up – return
back to Wins8 start menu



Four fingers slide down/up:
Window minimize/maximize

Function Key Combinations(Fn+)

F1	Internet	F2	Search	F3	Lock screen
F4	Email	F5	Prev	F6	Play/Pause
F7	Next	F8	Volume-	F9	Volume +
F10	Shear	F11	Copy	F12	Paste
PrtScr Pause	Stop	Ins ScrLk	Page turning lock	ESC+K	Connect
Del 	Home	A	Caps Lock		Bluetooth Light
	Power Light	Q IOS	IOS System	W Android	Android System
E Windows	Windows System				

Technical Specifications

- ◆ Keyboard size : 329.6X110.0X17.8mm
- ◆ Touchpad size : 80.4X93.3mm
- ◆ Working distance : >10M
- ◆ Weight : 270g
- ◆ Keyboard layout : 80Keys
- ◆ Sleep time : Ten minutes
- ◆ Awaken way : Arbitrarily key to awaken
- ◆ Use touchpad the working current : $13.3 \pm 0.2\text{mA}$
- ◆ Use key the working current : 5mA
- ◆ Working voltage : 1.9-3.0 V
- ◆ Low voltage alarm : $\leq 2.0\text{V}$
- ◆ Standby current : 0.45mA
- ◆ Sleep current : 0.17mA
- ◆ Power supply mode : AAA x 2 dry battery



Status Display LED

- ◆ Power on the keyboard: Red light blink
- ◆ Match code success: Red light go off
- ◆ Low voltage indication: Red light will blink when the working voltage is under 2.0V.

Supported Environment

- * Windows 2000, Windows XP, Windows Vista, Windows CE, Windows 7, Windows 8
- * Linux (Debian-3.1, Redhat-9.0, Ubuntu-8.10, Fedora-7.0 tested)

Keyboard Maintenance

- 1、do not throw the battery into the fire, or a mixture of different types of batteries in order to avoid battery leakage or explosion. Please put the battery in a cool and dry place and away from children;
- 2、Do not expose the device in extreme heat or cold. Extreme temperatures will cause the life span of the battery to shorten.
- 3、Use only a damp cloth with mild soap to clean the device. Solvents and other cleaning agents may cause damage to the device.

Warranty

The product has a 12-month warranty against manufacturing defects starting from the purchase date.

Warranty Card

User information

Company or personage full name

Contact address _____

TEL _____ Zip _____

The purchased product name and model NO.

Purchased date _____

This reason due to the product broken and damage is not include on the warranty.

- (1) Accident, misuse, improper operation, or any unauthorized repair, modified or removed
- (2) Improper operation or maintenance, when operation violation of the instructions or connection unsuitability power supply.

