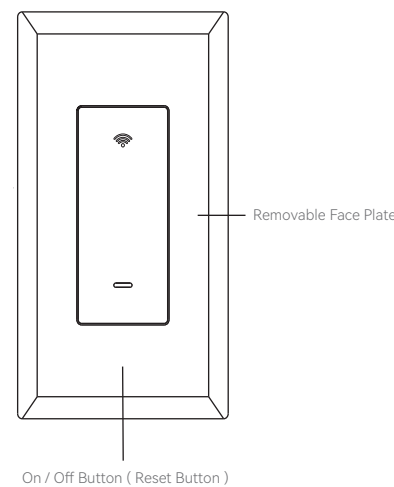
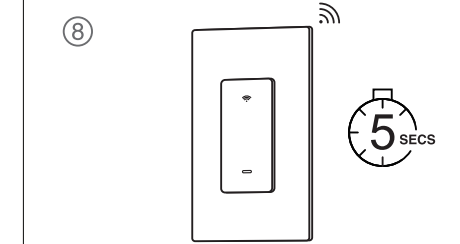
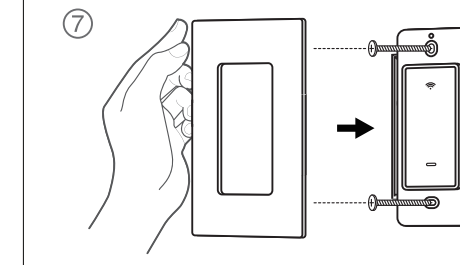
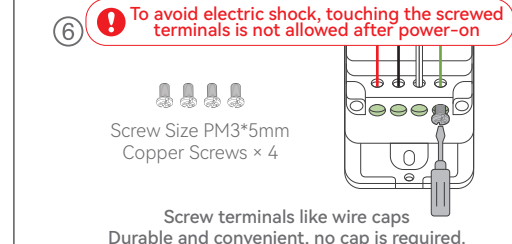
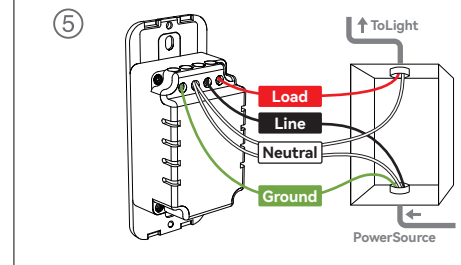
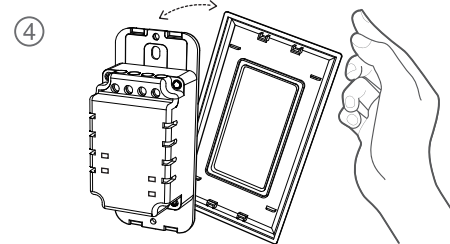
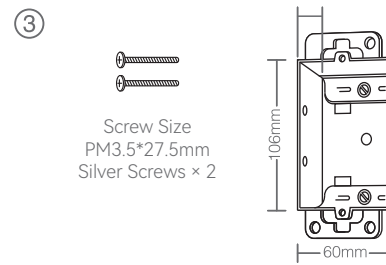
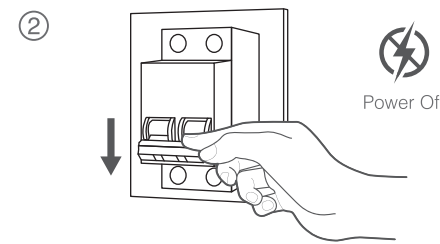




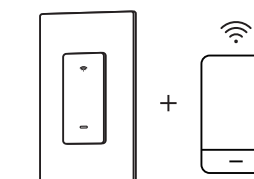
### Product Overview



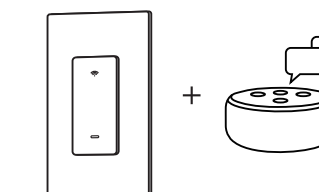
① **How to download the APP?**  
**Option 1:** Search for our app in the Apple APP Store or Google Play.  
**Option 2:** Scan the QR code to enter the download page.



⑨ After download APP and login, make sure the indicator under blinking, then please use our APP "Add device" then scan the QR code and get into Quick Pairing, connect the device and APP. If you meet any issue, contact us via official APP or website. (<https://ghomesmart.com/>)



⑩ **How to connect Alexa or Google Assistant?**



Since the device only supports 2.4G Wi-Fi connection, please ensure that the mobile phone and the device are connected to 2.4G Wi-Fi simultaneously

### Parameters

Model: SW5  
 Input: 120V~50/60Hz 15A  
 Output: 120V~50/60Hz 15A Max. Resistive  
 Wi-Fi: 802.11 b/g/n, 2.4 GHz(only)  
 Operating Temp.: 0~40°C  
 Operating Control Type 1  
 Pollution Degree: 2  
 Max Power: 1800W

### How to Pair with the App

1. Open the app and create your account.
2. Turn on the plug and place it near the router when pairing.
3. Hold the ON/OFF button for 5 seconds and release when the switch starts to blink slowly to enter the network pairing mode.

Connect your phone to the Wi-Fi router, click the "+" at the top right corner of the homepage to add a device. You can add a device in two ways.

1) Bluetooth Auto-Discovery Mode (Recommended)  
 The app will suggest you to turn on Bluetooth and Wi-Fi on your phone, then select the device you want to add. Enter your Wi-Fi name and Wi-Fi password (supports 2.4G Wi-Fi only), and it will automatically connect to the network.

2) "Slow Flash" Mode (AP)  
 If Bluetooth networking fails, you can try AP networking mode. Select "SW5" under "Electrician", enter your Wi-Fi name and Wi-Fi password (supports 2.4G Wi-Fi only), choose "Slow Blink" to ensure the LED indicator blinks slowly, connect your phone to the device hotspot: "SmartLife-XXXX", then return to the app interface, it will automatically connect to the router, completing the configuration.

### Reset

Turn on the power, hold the Reset button for more than 5 seconds and let it go when the Switch starts to flash slowly, the reset is successful.

When the Switch is in a new network environment, you need to restore the factory settings, and then reconnect to the network.

### Warnings and Precautions

- Keep it out of the reach of children and pets.
- Do not use this product in humid environments or outdoors. It's for indoor use only.
- Do not place this product near heating devices, such as microwave ovens, stoves, or radiators.
- Protect the product from extreme temperatures, direct sunlight, strong jolts, high humidity, moisture, flammable gases, vapors and solvents.
- Do not disassemble, modify, or repair your device, and ask help from the authorized professionals for device malfunction.
- Do not use the device when it is no longer working properly or visibly damaged.

- Do not store the device for extended periods in poor ambient conditions.
  - Never use aggressive detergents such as rubbing alcohol or other chemical solutions because these could damage the casing or even impair the functioning of the product.
- Note: The image shown in the manual is indicative only. If there is inconsistency between the image and the actual product, the actual product shall govern.

NOTE: This equipment has been tested and found to comply with the limits for a Class B digital device, pursuant to part 15 of the FCC Rules. These limits are designed to provide reasonable protection against harmful interference in a residential installation. This equipment generates uses and can radiate radio frequency energy and, if not installed and used in accordance with the instructions, may cause harmful interference to radio communications. However, there is no guarantee that interference will not occur in a particular installation. If this equipment does cause harmful interference to radio or television reception, which can be determined by turning the equipment off and on, the user is encouraged to try to correct the interference by one or more of the following measures:  
 - Reorient or relocate the receiving antenna.

- Increase the separation between the equipment and receiver.
  - Connect the equipment into an outlet on a circuit different from that to which the receiver is connected.
  - Consult the dealer or an experienced radio/TV technician for help
- Changes or modifications not expressly approved by the party responsible for compliance could void the user's authority to operate the equipment.
- This device complies with Part 15 of the FCC Rules. Operation is subject to the following two conditions:  
 (1) this device may not cause harmful interference, and (2) this device must accept any interference received, including interference that may cause

undesired operation.  
 RF Exposure Warning Statements:  
 This equipment complies with FCC radiation exposure limits set forth for an uncontrolled environment. This equipment shall be installed and operated with minimum distance 20cm between the radiator & body.



4.02.000.1203 V3.0

MADE IN CHINA

