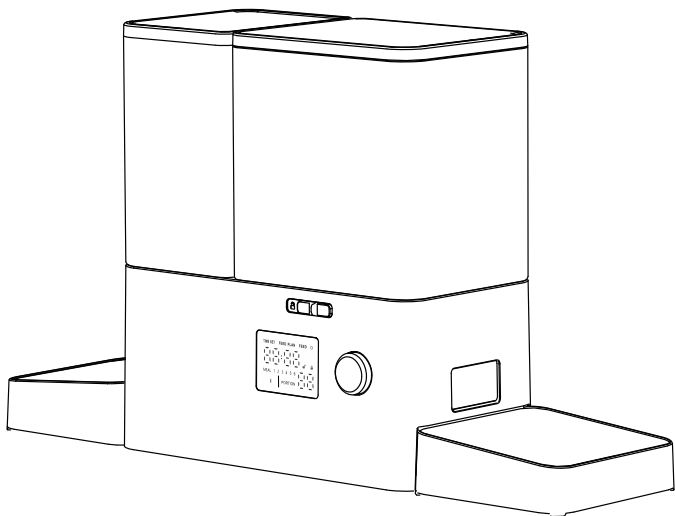


Pet Automatic Feeder & Gravity Water Dispenser

Model: PF14



User Manual
ON-D229

Contents

Safety Warning	01
FCC Statement	01
Product Overview	02
Package Contents	03
Specifications	03
Assemble the Feeder	04
LED Display Introduction	05
Feeding Settings	06
Disassemble for Cleaning	08
Troubleshooting	10
Warranty Information	11
GPSR Product Information	12

Safety Warning

1. Select a stable and firm location to install the feeder to avoid it from shaking or toppling over.
2. Ensure that the installation environment is dry and away from water sources and damp areas.
3. Before adding pet food, check if the food is suitable for feeding to avoid using deteriorated or unsuitable food.
4. Set an appropriate feeding amount and time, and do not overfeed to prevent pet obesity or indigestion.
5. Observe the pet's eating situation regularly and adjust in time if there is any abnormality.
6. Clean the feeder regularly to keep it clean and hygienic and prevent the growth of bacteria.
7. Pay attention to keeping the battery fully charged or the power connection normal.
8. These packaging bags may cause suffocation. Keep them away from children and pets.
9. Do not use the feeder when the pet cannot reach the food plate or has any physical disability.
10. Do not put your fingers into the food outlet or let your fingers touch the rotor.
11. Do not immerse the base part in water at any time, otherwise it may damage electronic components, such as the control panel.

FCC Statement:

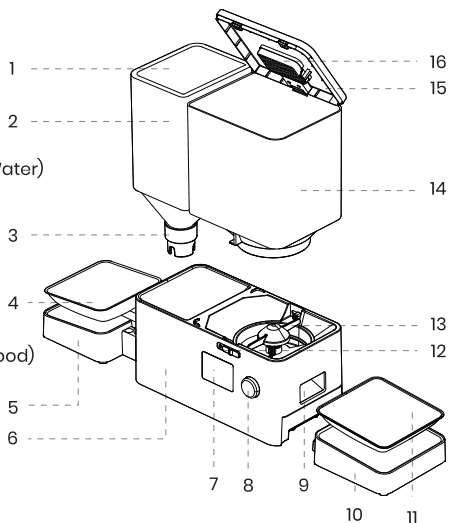
This device complies with part 15 of the FCC Rules. Operation is subject to the following two conditions:

1. This device may not cause harmful interference, and
2. This device must accept any interference received, including interference that may cause undesired operation.

Product Overview

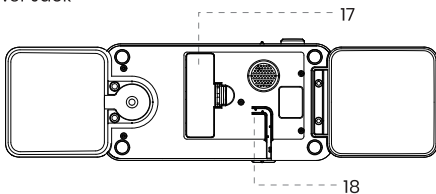
Front View

1. Decorative Panel
2. Water Tank
3. Bottle Cap
4. Stainless Steel Bowl (Water)
5. Water Bowl Base
6. Main Unit
7. LED Display
8. Control Knob
9. Food Outlet
10. Food Bowl Base
11. Stainless Steel Bowl (Food)
12. Food Tank Latch
13. Impeller
14. Food Tank
15. Lid
16. Desiccant Box

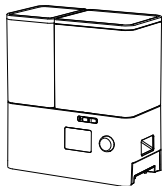


Bottom View

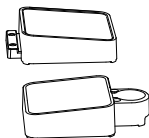
17. Battery Compartment
18. USB-C Power Jack



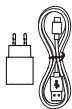
Package Contents



1 × Smart Feeder



2 × Stainless Steel Bowls & Base



1 × Power Adapter & Cable(USB-C)



1x Desiccant Bag



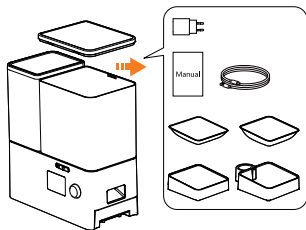
1x User Manual

Specifications

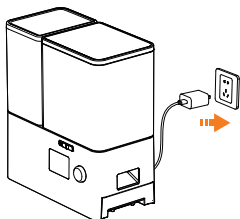
Model:	PF14
Dimensions (L × W × H):	22.6 × 6.46 × 13 in (303 × 161 × 329 mm)
Tank Capacity:	5L (169 oz) Food + 3.5L (118 oz) Water
Material:	ABS, 304 stainless steel
Input:	5V $\overline{\text{---}}$ 1A
Kibble Size:	≤ 0.5 in(13mm)
Power:	Use the adapter for regular operation; batteries are for backup only.

Assemble the Feeder

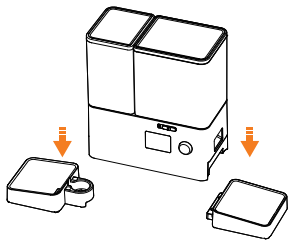
1. Remove the feeder and all accessories from the packaging.



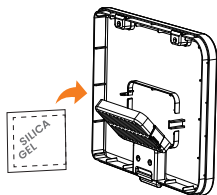
2. Connect the power cable and adapter to the device. Insert 4×AA alkaline batteries (not included) for backup power.



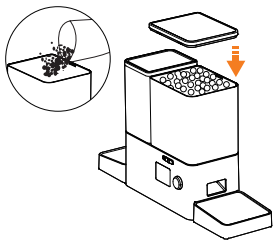
3. Place the stainless steel bowl on the base and insert it into the bottom of the feeder main unit.



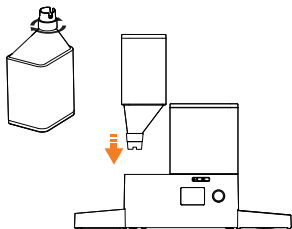
4. Open the top lid and place the desiccant bag inside. (We recommend replacing the desiccant monthly.)



5. Add dry pet food into the food tank and close the lid.



6. Fill the water tank with water, tighten the cap and place the tank into the designated slot.

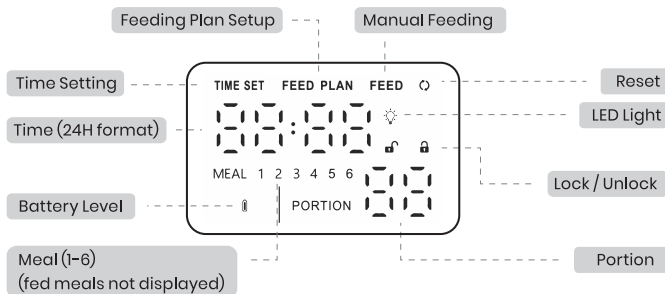


Note:

Kibble size allowed: ≤ 0.5 in (13mm)

Do not use it for canned food or wet food.

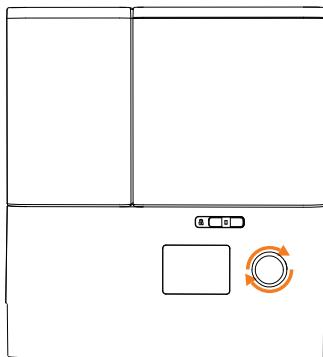
LED Display Introduction







Note:

The screen will automatically lock after 30 seconds of inactivity.

Control Knob

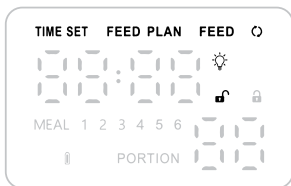


-  Press and hold the knob for 3 seconds— Lock/Unlock
-  Press and hold the knob for 7 seconds—Restore factory settings
-  Click—Confirm
-  Rotate— Menu Selection / Adjust Value

Feeding Settings

Unlock

Press and hold the knob  for 3 seconds

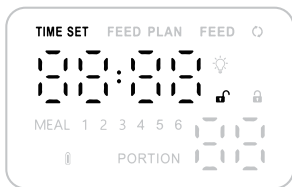


Note:

The screen will automatically lock after 30 seconds of inactivity.

Current Time Setting

1. Turn the knob clockwise to TIME SET. Press the knob to enter the current time setting.
2. Rotate to adjust the hour, press to confirm.
3. Rotate to adjust the minute, press again to confirm.

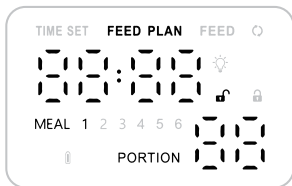


Note:

Make sure both the hour and minute are correctly set.

Feeding Plan Setting

1. Turn the knob clockwise to FEED PLAN and press to enter the feeding settings.
2. Rotate the knob to select the number of meals, then press to confirm.
3. Set the hour and press to confirm, then set the minutes and press briefly to confirm.
4. Rotate the knob to select the portion size, then press to confirm.
5. Repeat steps 2–4 to set additional meals (up to 6).
6. The menu will return to the main screen after 10 seconds of inactivity.



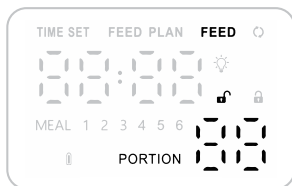
Note:

After all feeding plans are completed, the MEAL indicator turns off. It will light up again after midnight (00:00).

Manual Feeding

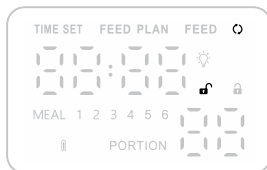
Turn the knob clockwise to the FEED menu and click to dispense one portion.

Click repeatedly to dispense up to 99 portions.



Reset

Turn the knob clockwise to the Reset icon , press and hold for 7 seconds to restore factory settings.



Note:

Two beeps indicate factory reset is complete.

The feeder returns to standby after 10 seconds of inactivity and auto-locks after 30 seconds.

Indicator Lights

1. LED Tank Light:

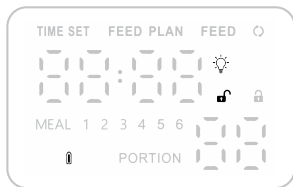
Blue light stays on to illuminate the tank.

Note: Turn the knob to the bulb icon  and click to turn off.

2. Battery Level Indicator:

Fully charged: Solid white light

Low battery: Flashing white

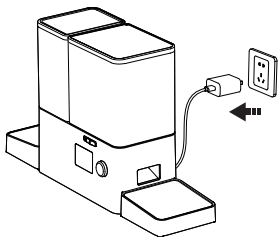


Note:

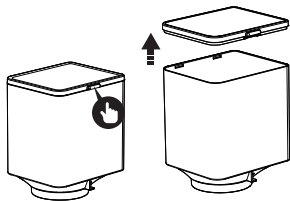
When running on battery only, the screen is off. Click the knob to wake the screen.

Disassemble for Cleaning

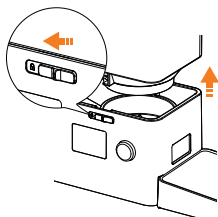
1. Unplug the power cord.



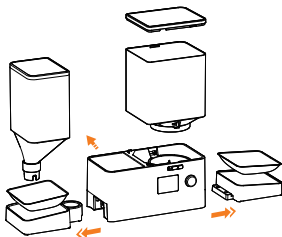
2. Remove the top lid: Press and hold the snap button to lift the top lid upwards.



3. Remove the food tank: Dial the latches on both sides to the unlocked position.

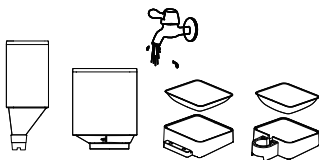


4. Remove the water tank, stainless steel bowls, and base.



Washable parts

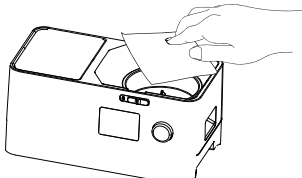
Note: Do not wash in a dishwasher.



Tip: For your pet's health, clean at least once a month.

Non-washable parts

Wipe the surface of main unit with a damp cloth only.



Note: Do not rinse or immerse in water.

Troubleshooting

Please attach your troubleshooting and order ID, contact us via email support@oneisall.com.

We would help you solve the problem fast.

Problems	Solutions
Device does not deliver food	Check if the power supply is normal.
	Try manual feeding to see if food can be released.
	Make sure the kibble size is under 0.5inch (13mm).
	Check if the current time is correct and if the feeding schedule is saved.
	Check if the food outlet is clogged with too much food.
Buttons not responding	After 30 seconds of inactivity, the buttons lock automatically.
	Press and hold the knob for 3 seconds to unlock.
Screen not lighting up	If powered by batteries only, the device enters standby mode and the screen remains off.
	Feeding will still work as scheduled.
	Press the knob to wake the screen.
MEAL indicator not lighting up	After all feeding plans are completed, the MEAL indicator turns off.
	It will light up again after midnight (00:00).
Feeding amount inaccurate	Different kibble sizes may cause slight variations in portions.
	Note: Larger discrepancies during the first few feedings are normal. After about six feedings, the portion size will stabilize.

Warranty Information

Oneisall offers a standard 2-year warranty. If you have any issues with your Oneisall product, please do not hesitate to contact us. Be sure to include your proof of purchase, model number, and any relevant photos or videos in your message to expedite the process. Our Oneisall support team is available 7 days a week and will respond to your inquiry within 24 hours. Thank you for choosing Oneisall.

Please note that the Oneisall warranty does not apply to used products or purchases made from unauthorized sellers. It's important to be aware that the warranty also does not cover consumable parts such as blades, guards, filters, brushes, and similar items. These parts may require regular replacement or maintenance.

✉ support@oneisall.com

☎ +1877-522-8578(US) Mon-Fri 8am-5pm(PST)

🌐 www.oneisall.com



Oneisall support



@Oneisall Official

GPSR Product Information



Name : Apex CE Specialists GmbH
Add : Grafenberger Allee 277-287,40237 Düsseldorf,DE
Contact Person: Wells Yan
Zip Code: 40237
E-Mail : Info@apex-ce.de



Name: APEX CE SPECIALISTS LIMITED
Add: 6f East Union Street, Manchester, England, M16 9AE
Contact: Wells
Tel: +441616371080
E-Mail: Info@apex-ce.com

Product Name: Pet Automatic Feeder & Gravity Water Dispenser
Brand: Oneisall
Product Model: PF14
Input: 5V = 1A

GPSR Manufacturer Information

Business Name: Shenzhenbenfendianzishangwuyouxiangongsi
Manufacturer's Address: CN, 518000, Guangdong Sheng, Shenzhen,
Longhua District, Minxin Community Bishui Longting Building 6 Unit, 7B
Tel: +86 185 6587 6424
E-Mail: topservice4u@hotmail.com



Made in China



Any problem you have, please contact us:
support@oneisall.com



Oneisall
support

ON-D229