

**Part Numbers:**

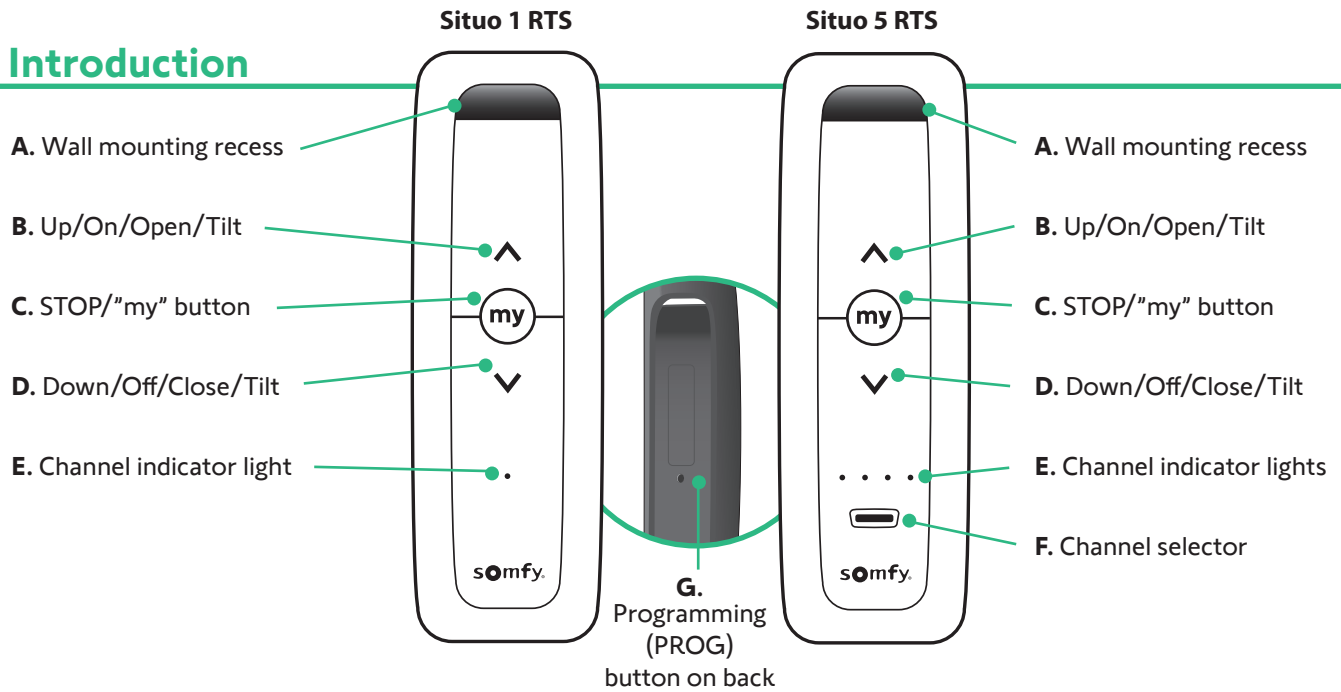
- 1870571 Situo 1 RTS Pure
- 1870575 Situo 5 RTS Pure
- 1870572 Situo 1 RTS Iron
- 1870576 Situo 5 RTS Iron
- 1870573 Situo 1 RTS Natural
- 1870577 Situo 5 RTS Natural
- 1870574 Situo 1 RTS Arctic
- 1870578 Situo 5 RTS Arctic

# Situo<sup>®</sup> 1 & 5 RTS

The Situo 1 RTS remote control allows a group of one or more window coverings to be controlled. The Situo 5 RTS remote control allows up to 5 groups of one or more window coverings to be controlled.

## 1

### Introduction



Continued On Next Page

### Channel Selection

Before operating the Situo 5 RTS, ensure the correct channel has been selected.

- Press the channel selector button **(F)** to choose the correct channel.
- The selection indicator lights **(E)** correspond to channel 1 through 4. Channel 5 is selected when all indicators lights are on.

### Adding/Deleting a Situo 1 or 5 RTS

To add or delete from a window covering:

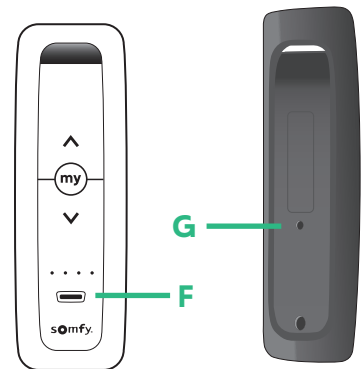
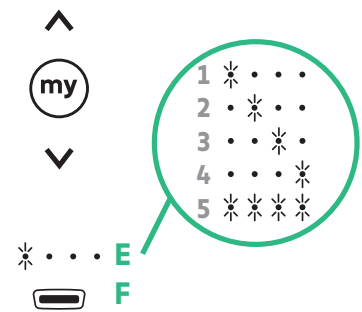
On the Situo 1 already paired with the window covering:

- Press and hold the PROG button **(G)** until the window covering moves up and down. This step may require a paperclip because the button is recessed.

On the Situo 5 RTS to be added or deleted:

- Select the channel **(F)**.
- Briefly press the PROG button **(G)**, the window covering moves up and down and the Situo 5 RTS is added or deleted.

#### Situo 5 RTS



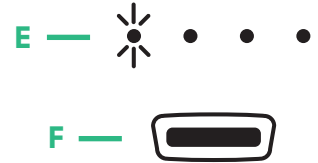
### Setting Up a Replacement Remote

1. Reset motor from motor head (motor will jog to confirm).
2. On the Situo remote, Press UP & DOWN.
3. Next, Press **"my"** and DOWN to set lower limit. Move motor to the desired limit position.
4. Then, Press **"my"** and UP to set upper limit. Move motor to the desired limit position.
5. Now, PRESS & HOLD **"my"** Button to confirm limit settings (motor will jog once).
6. Finally, on the back of the Situo Remote, PRESS and HOLD "Programming Button" until the motor jogs again.  
Your Situo remote is not programmed and can control your RTS shade. Use the UP and DOWN buttons to confirm.
7. Repeat steps again if motor limits are not properly set.

Continued On Next Page

### Situo 5 RTS, ensure the correct channel has been selected with the Channel Selector Button (F)

- A short press highlights the selected channel (E).  
Channel 5 is selected when all 4 indicator lights are on.
- Pressing several times changes the selected channel.



### Arrow Buttons (B)

Depending on the type of window covering to be operated:

- Up/On/Open/Tilt
- Down/Off/Close/Tilt



### Stop button/"my" (C)

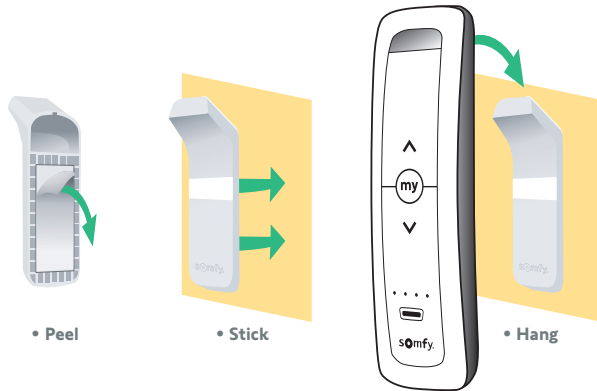
- Press the "my" button to stop the window covering action.
- If the window covering action has been stopped, press **Up/Down** button to re-activate it.



### Setting, modifying, or deleting the favorite preset position "my". (C)

- Place the window covering in the desired position then press and hold "my" button for approximately 5 seconds to set the favorite position.
- To delete the favorite preset position, place the window covering in the established favorite position by pressing "my". Then press and hold "my" button for approximately 5 seconds.

## 5 Wall Mounting

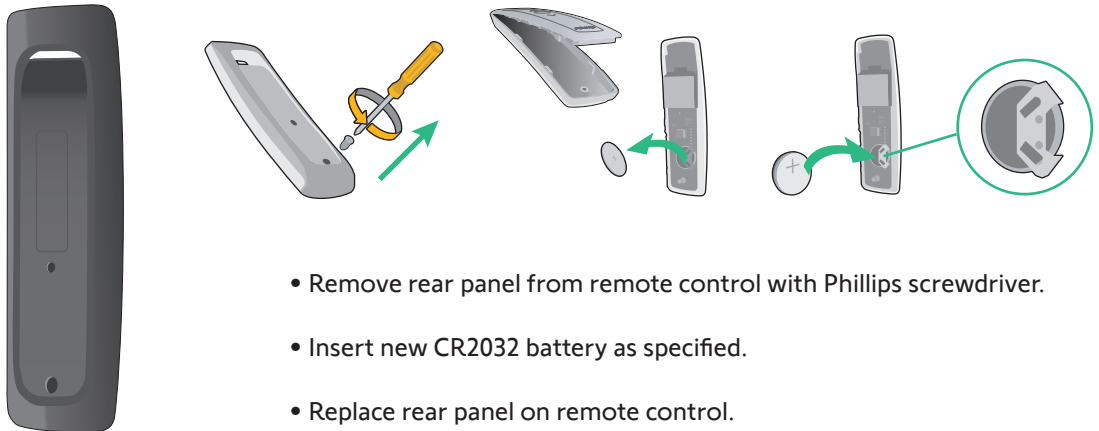


Using the included Mounting Bracket:

- Peel the protective film from the adhesive on the back of the mounting bracket.
- Stick the wall mounting to a flat, clean, and dry surface (press firmly).
- Hang the Situo 1 or 5 on the mounting bracket.

## 6 Battery Replacement

Battery compartment located on back



**Note:** Visit <https://store.somfysystems.com/> to purchase an additional or replacement product.



This product is intended for indoor use only. Please keep out of reach of children. Avoid damaging product by dropping or using undo force. Do not expose product to open flame, heat, or moisture.

This device is FCC certified and complies with part 15 of the FCC rules. RTS compatibility: RTS transmitters are capable of operating any RTS motor.