

INALSA

VACUUM
CLEANER



INSTRUCTION MANUAL
CUM
WARRANTY CARD

Dear Customer,

Congratulations! On the purchase of your **INALSA Vacuum cleaner** this is designed to include many superior features that permit you the fullest expression of your ironing skill and enthusiasm.

You are now on the threshold of a whole new world of cleaning pleasure.

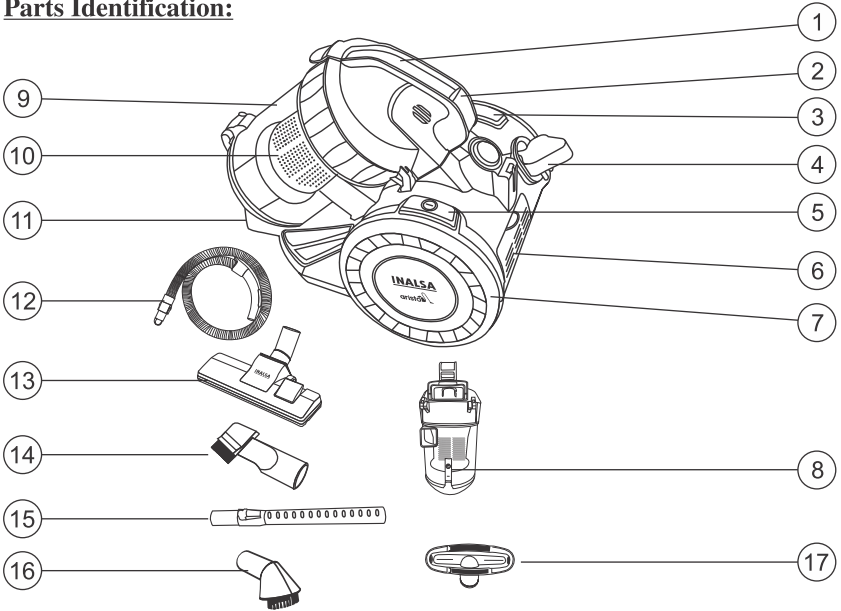
At INALSA, we have a reputation of manufacturing innovative, high quality appliances such as Food Processors, Mixer Grinders, Juicer Mixer Grinders, Cooking Ranges, Juice Extractors, Sandwich Toasters, Oven Toaster Grillers, Hand Blenders, Electric Kettles, Rice Cookers, and Electric Chimneys. Your newly acquired **INALSA Vacuum cleaner** bears the same distinctive hallmark of excellence.

It is all the result of vigorous quality consciousness in INALSA's design and development where uncompromising standards are maintained and rigid quality control measures are exercised on raw materials, components and finally, the finished product.

Your **INALSA Vacuum cleaner** has a lot of thoughtful features built in to make your ironing convenient. Please read these instructions carefully, so that you may get the best out of the power packed features in your **INALSA Vacuum cleaner**.

Welcome to the INALSA world of living pleasure!!

Parts Identification:



Part No.	Part Name
1.	Carry Handle
2.	Dust Container Release Button
3.	Cord Rewinder Button
4.	Cord Plug
5.	Power ON/OFF Button
6.	Exhaust Plate
7.	Big Wheel
8.	Dust Release Button
9.	Dust Container

Part No.	Part Name
10.	Cyclone Dust Filter
11.	Hose Connector
12.	Hose Pipe
13.	Floor cum Carpet Brush
14.	2-in-1 Crevice Nozzle
15.	SS Telescopic Tube
16.	360° Round Brush
17.	Upholstery Brush

Technical Specifications*

Product	Vacuum Cleaner
Model	Aristo
Voltage	240V, 50Hz, AC
Power consumption	1400W
Cord Plug	Molded Plug with PVC cord
Dust Container Capacity	1.5 L
Safety	Overheat Protection

* Due to continuous improvements in product, specifications are subject to change without prior notice.

Important Instructions:

1. Please read operating instructions before using the appliance.
2. The input supply from the mains must comply with the rated input.

Do's:

1. Only use the accessories that have been supplied with the vacuum cleaner.
2. Before starting vacuuming, any pointed, sharp-edged or very large items should be removed so that they do not damage the filter.
3. Always ensure that the surface you are vacuuming is dry, otherwise you can end up damaging the vacuum cleaner. If the carpet has been recently shampooed, ensure that it has completely dried out.
4. Always remove the plug from the socket after you have finished using the vacuum cleaner, before you replace the dust container and filter, and before you clean it.
5. The appliance is intended for household use only.
6. In the event of any malfunctions or damage, remove the plug from the socket immediately.
7. If you have an extension cable, it must be suitable for use with corresponding power rating.
8. In case of any defect, contact the nearest authorized dealer/ service centre.

Don'ts:

1. Do not use near the direct flames or acid.
2. Do not use the vacuum cleaner to vacuum any type of fluid.
3. Never allow this appliance to be operated by children, or other people who are unaware of the dangers of working with electrical apparatus.
4. Never touch the plug if your hands are wet or damp.
5. Do not insert any objects into the interior of the cleaner's housing.
6. Never use the vacuum cleaner without a filter inserted.
7. Do not wind the cable around the vacuum cleaner.
8. Do not place the vacuum cleaner near appliances such as cookers, radiators, heaters etc.
9. Do not use the cleaner to vacuum hot or incandescent items.
10. Do not immerse in water.
11. Do not try to clean the product when it is in running condition.

Before First Use:

1. Remove the packaging from all the components of the vacuum cleaner.
2. Check whether all the components have been included in delivery and inspect them for any transport damages.
3. Clean the vacuum cleaner and its accessories as described under Cleaning and Care.

How to use the vacuum cleaner:

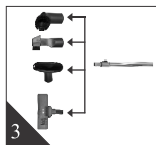
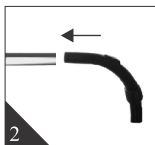
1. Remove your vacuum cleaner carefully, using the vacuum cleaner from the box. You may wish to store the packaging for future use.

Mains Power:

1. Your vacuum cleaner is equipped with a cord power and plug.
2. Plug your power cord into the main socket. Ensure the voltage/socket is compatible before switching on your vacuum cleaner.
3. When not in use, unplug your vacuum cleaner from the mains power.

Assembly:

1. Place the Hose connector into the hose inlet socket by pushing the hose pipe into it. (Fig.1).
2. To release the hose connector pull the hose pipe with pressing the button mounted on hose pipe .
3. Slide the curved handle of hose pipe into the telescopic tube (if required) (Fig.2).
4. Slide the telescopic tube into the required attachment and length of telescopic tube can be varied as per requirement by pressing the button mounted on tube (Fig.3).



Switch ON:

1. Press the ON/OFF switch to turn the vacuum cleaner on (Fig.5).



Rewinding The Cable:

1. Hold the cable in one hand, and press the cable rewind button, feeding the cable back slowly (Fig.6).



Using The Vacuum Cleaner:

1. The floor cum carpet brush is generally used for daily cleaning of carpets and hard floors.
2. The crevice tool can be used for slipping down the side of chairs and sofas, reaching into corners along baseboards etc.
3. Connect the required tool by pushing and twisting gently onto the end of the telescopic tube.
4. Pull the power cord gently to the required length, the maximum length is signified by the yellow and red marking on the power cord. Do not attempt to pull past the red marker.

5. Ensure that your power supply is 220-240V, AC, 50Hz then plug the cord into the outlet.

Warning:

IMPORTANT: DO NOT USE THIS VACUUM CLEANER STANDING ON END. THIS WILL CAUSE OVERHEATING AND MAY DAMAGE THE VACUUM CLEANER OR FLOOR COVERINGS.



Maintenance:

Emptying The Dust Container

If the dust in the dust container reaches the Max or the suction power goes down significantly, the dust container should be cleaned in time.

1. Press the button on the dust container to take off the container (Fig.7).
2. Put the dust container above a dust bin then push the dust release button to release the dust (Fig.8).
3. In normal operation the suction power of the machine will not lose when the dust is below "max" line. The machine can be re-used after emptying the container.
4. In case the suction power goes down significantly after long time, then the fine dust in the container / filter must be cleaned/washed.



Filter Cleaning

Below Procedure should be followed:

Filter 1:

1. Open upper lid to remove HEPA Filter. Pull out HEPA Filter for cleaning. Wash it with running water to clean, allow drying naturally (Fig.9).
2. Now hold the handle, rotate the dust container lid to anticlockwise direction to open it(Fig.9)
Detach the cyclone filter assembly from dust container and wash it with running water to clean, allow drying naturally (Fig.10).
3. Finally assemble the machine as per the reverse procedure. Pay attention to the HEPA and cyclone filter assembly while inserting in dust container.



Filter 2:

1. Remove exhaust plate and pull out the exhaust filter. this can be wash in running water in case of fine dust is accumulated. dried the exhaust filter and assemble in reverse order.(Fig.11).



Safety Instructions:



Read all the safety instructions before you use your vacuum cleaner

Power Secure:

1. You should only plug your vacuum cleaner into a 220-240V, AC, 50Hz supply.

Using Your Vacuum Cleaner

1. For safety reasons you should not vacuum wet surfaces, pick up wet objects or use in wet conditions.
2. Do not use the vacuum cleaner to pick up burning objects as this can be a fire risk!
3. Do not pick up hot objects such as coal and ashes.
4. Do not use the vacuum cleaner to pick up large objects that are likely to cause damage.
5. Do not run over the mains cable with your vacuum cleaner. Do not use with damaged cord.
6. Use only for domestic use. Industrial or commercial use invalidates the warranty.
7. Do not let children use the vacuum. Keep hair, loose clothing, fingers, feet and body parts away from openings or moving parts.
8. Do not use without HEPA & Exhaust filters in place.

Safety Feature

This vacuum cleaner is provided with overheat protection. In case the motor gets overheated, this protector will automatically stop the motor till temperature is normal. In such situation, switch off the unit and restart after 15-20 minutes.

For better performance, use this vacuum cleaner for 10 min and give 3 minutes break so that the motor does not heat up.

Transporting Your Vacuum Cleaner:

1. To move your vacuum cleaner from room to room, unplug the unit and carry using the carry handle.
2. Never pull the vacuum cleaner by its cord or the flexible hose when moving.

Servicing and maintenance:

1. Ensure you replace the filters when necessary.
2. Always empty the dust container when maximum line crossed on the dust container of the vacuum cleaner.
3. The plug of the power cord must be removed from the wall socket before cleaning the appliance or undertaking any maintenance operations.
4. If the power cord becomes damaged, do not use the vacuum cleaner, it must be replaced by an authorised service person only.

Trouble Shooting Guide

Problem	Possible Cause	Solution
The appliance does not Switch ON	<ul style="list-style-type: none"> • Power cord not firmly plugged into socket. • No power in the main Supply • Check whether the vacuum cleaner power is turned ON 	<ul style="list-style-type: none"> • Plug in firmly • Check the fuse of circuit breaker, make sure the socket has power • Turn ON the power switch
The appliance has weak suction power	<ul style="list-style-type: none"> • Dust container is full • Unit clogged • Dust container, cyclone filter assembly needs cleaning • Check whether HEPA filter is blocked or filled with dust 	<ul style="list-style-type: none"> • Empty dust container. • Turn unit off and unplug from wall socket. Remove dust container and check for objects in air duct and remove • Wash or clean properly and use after dries naturally • Timely clean or replace HEPA filter
The dust escapes from the appliance	<ul style="list-style-type: none"> • Dust container is full • Dust container is not installed Correctly • Check whether HEPA filter are installed • Puncture/hole in HEPA filter • Check whether the hose pipe is properly connected to main unit 	<ul style="list-style-type: none"> • Empty dust container. • Review dust container instruction • Install HEPA filter correctly • Replace HEPA filter • Insert the hose pipe properly in main unit
The hose or brushes do not pick up	<ul style="list-style-type: none"> • Hose clogged • Dust container is full • HEPA and exhaust filter is filled with dust 	<ul style="list-style-type: none"> • Remove hose, brushes and clear the blockage • Empty and clean dust container • Wash HEPA & exhaust filter, dries naturally before further use
Heat produced during use	<ul style="list-style-type: none"> • A small amount of heat is normally produced by the vacuum cleaner during use. 	

WARRANTY

The “**Inalsa Vacuum cleaner**” is fully warranted against any manufacturing defect for a period of **TWO years** from the date of purchase. Should any defect develop in the Vacuum cleaner during the warranty period, **TUAREG MARKETING PVT. LTD.** undertakes to get the Vacuum cleaner or any part thereof, repaired at any of its Authorised Service Center.

The above warranty shall be subject to the following terms and conditions:-

1. Any defective product or part thereof will be repaired within the above stated warranty period on receipt of the same with this card duly filled in and stamped by dealer from whom the product was purchased along with the purchase bill/ invoice, provided the product is brought to our nearest service center freight paid and packed securely.
2. In the event of repairs/ replacement of any part of product, this warranty will thereafter continue and remain in force only for the unexpired period of warranty.
3. This warranty is valid only when:-
 - The product is purchased from the company's authorized dealer and accompanied by this warranty card / cash memo.
 - The product has not been serviced by the Inalsa authorized service personnel.
 - The product has been installed, used and maintained in accordance with the instruction manual.
4. The warranty does not apply to :-
 - Normal wear and tear of the product
 - Damage due to chipping, peeling, plating and denting.
 - Damages arising due to running of the appliances on the alternate sources of power such as Inverter, generator or any such auxiliary power supply aid resulting in variation/ fluctuating voltage
 - Breakage or damage to components made of ABS, SAN, Bakelite, Glass and such plastic/rubber parts, cord, bulbs and surface coating.
 - Damages resulting from accidents, mishandling or negligence on the part of the customer
 - Product if used for the commercial purposes.
 - Product, the serial number of which has been removed obliterated or altered on the specification plate.
5. The warranty is in lieu of all other warranty, expressed or implied and does not cover indirect or consequential damages/ loss.

WARRANTY CARD

Product : Vacuum Cleaner

Model : Aristo

Serial No

Date of purchase.....

Bill/ Cash Memo no.....

Purchaser' name.....

Address.....

.....

.....

Dealer's stamp and Signature



Scan and Download
INALSA Connect App
to Register your Warranty

E-mail- customercare@inalsa.co.in

Customer Care Number (Open on all 7 Days* from 9:30 to 6:30)

9773982065

INALSA

TUAREG MARKETING PVT. LTD.
154, Bhalswa, Delhi- 110033

