

Hisense

life reimagined

USER'S OPERATION MANUAL

Before operating this unit, please read this manual thoroughly, and retain for future reference.

HWF3S7514X

HWF3S8514X


EN

English

Thank you very much for choosing our product.

- Please install and operate this product correctly. Do not use it for any laundry labelled as not suitable for machine washing.
- The pictures shown in the manual are for illustrative purposes only. Appearance, printing and other details are subject to actual product.
- We prioritize technological innovation. To improve its overall performance, the appliance is subject to technical changes without notice.
- This product is intended solely for household use.

The following symbols used in this manual are defined below:

 Information, advice, tip, or recommendation

 WARNING - General Danger

 WARNING - Danger of Electric Shock

 WARNING - Danger of Hot Surface

 WARNING - Danger of Fire



Please read this manual thoroughly.

CONTENTS

4 SAFETY PRECAUTIONS	INTRODUCTION
10 PRODUCT DESCRIPTION	
11 Specifications	
12 INSTALLATION AND CONNECTION	PREPARATION BEFORE FIRST USE
12 Packing/Packaging	
14 Removing the transport screws/rods	
15 Installation location	
15 Adjustable feet	
15 Installation clearance	
16 Connecting to water supply	
19 Connecting and securing the water discharge hose	
20 Connecting to power mains	
21 Transportation after installation	
22 BEFORE USING THE APPLIANCE FOR THE FIRST TIME	
26 PROGRAMS AND FUNCTIONS	WASHING STEPS
27 Program table	
29 Additional settings and functions	
33 Start the program	
33 End of the program	
34 PROGRAM INTERRUPTIONS AND CHANGES	
36 MAINTENANCE & CLEANING	CLEANING AND MAINTENANCE
36 Clean the detergent drawer	
37 Clean the water inlet hose, detergent drawer outer compartment, and rubber door gasket	
38 Clean the pump filter	
39 Clean the inlet filter	
39 Clean the machine body	
40 TROUBLESHOOTING	TROUBLE-SHOOTING
43 FAULT CODES AND TROUBLESHOOTING	
44 SERVICING	
44 USAGE RECOMMENDATIONS	MISCELLANEOUS
45 STAIN REMOVAL TIPS	
47 DISPOSAL	

SAFETY PRECAUTIONS



Please read this manual carefully before operating the appliance.

Do not operate the appliance without understanding or reading this manual.

This manual applies to multiple models. Therefore, it may include features not applicable to your model.

Failure to follow the instructions or improper operation may cause damage to laundry or equipment, or result in personal injury. Please keep the manual near the appliance for easy access.

This appliance is intended to be used in household and similar applications such as:

- staff kitchen areas in shops, offices and other working environments;
- farm houses;
- by clients in hotels, motels and other residential type environments;
- bed and breakfast type environments;
- areas for communal use in blocks of flats or in launderettes.

If the appliance is used for professional, for-profit purpose or purpose exceeding normal use in a household and similar applications, or if the appliance is used by a person who is not a consumer, the warranty period shall be equal to the shortest warranty period required by relevant legislation.

This appliance is not intended for use by persons (including children) with reduced physical, sensory or mental capabilities, or lack of experience and knowledge, unless they have been given supervision or instruction concerning use of the appliance by a person responsible for their safety.

Children should be supervised to ensure that they do not play with the appliance.

Children of less than 3 years should be kept away unless continuously supervised.

This appliance can be used by children aged from 8 years and above and persons with reduced physical, sensory or mental capabilities or lack of experience and knowledge if they have been given supervision or instruction concerning use of the appliance in a safe way and understand the hazards involved.

Children shall not play with the appliance. Cleaning and user maintenance shall not be made by children without supervision.

The maximum capacity in some cycles for dry clothes to be used is

HWF3S7514X	HWF3S8514X
7.5kg	8.5kg

The recommended maximum capacity for each program may vary. For optimal results, see "PROGRAM TABLE".

To connect the appliance to water supply, make sure to use the supplied water supply hose and gaskets. Water pressure has to be between 0.1-1 MPa (1-10 bar; 1-10 kp/cm²; 10-100 N/cm²).

Always use a new water supply hose to connect the appliance to water supply, do not reuse an old water supply hose.

For appliances with ventilation openings in the base, the ventilation openings must not be obstructed by a carpet.

If the supply cord is damaged, it must be replaced by the manufacturer, its service agent or similarly qualified persons in order to avoid a hazard.

ELECTRICAL SAFETY

This appliance complies with relevant safety standards.

Before connecting the appliance to the power mains, wait for at least 2 hours until it reaches room temperature.

This appliance must be repaired by an authorised service center, using only spare parts approved by authorised manufacturers. Any repairs or maintenance related to safety or performance should be conducted by trained professionals.

Do not attempt to repair the appliance by yourself. Repairs performed by unqualified personnel may result in personal injury or more serious error. Please consult your local service center and always insist on genuine spare parts.

Do not attempt to operate the appliance if it is damaged, defective, partially disassembled, or has missing or damaged parts, including damaged wires or plugs.

Do not excessively bend the power cord or place heavy objects on it.

Do not clean the inside or outside the appliance with spray water.

In case of flooding, please disconnect the power plug and contact the after-sales service center.

Models with a drying function enable automatic shutdown of the heater to prevent overheating. The heater automatically shuts off when the temperature exceeds the safety threshold and restarts when the temperature drops below the threshold.

Do not connect multiple power sockets, extension cords or dual adapters to the appliance. Do not connect the appliance to the power mains using an extension cord.

Do not connect the appliance to a power socket intended for an electric shaver or hair dryer.

Do not connect the appliance to a power socket intended for small loads.

Before connecting the appliance to the power supply, ensure that the electric voltage specified on the rating plate matches the Voltage of your socket.

The power socket must be securely grounded and the water supply must be unobstructed.

Do not connect the appliance to power mains using an external switching device such as a program timer, or connect it to power mains that is regularly switched on and off by the power supply provider.

Exhaust air must not be discharged into a flue designed to discharge combustion gases or other fuel exhaust gases.

INSTALLATION

Before using the appliance, be sure to remove the packaging (sponge, polystyrene foam, etc.) attached to the bottom of the appliance.

Please install the appliance correctly according to the instructions and connect it to the water and electricity supply (see "INSTALLATION AND CONNECTION").

Water piping and electrical wiring should be carried out by a fully trained technician or professional.

Do not install the appliance in a location where the door opening is restricted.

Do not install the appliance where the temperature may drop below 5°C, as its parts may be damaged in case of water freezing.

Place the appliance on a solid and level floor. If installed on a high platform, the appliance must be reinforced to prevent it from tipping over.

The end of the water discharge hose should reach into a water drain line.

This appliance should not be stored or used outdoors.

Avoid lint accumulation near the appliance.

Do not install the appliance near heaters or flammable materials.

Do not install the appliance in an area where gas leaks may occur.

Ensure good ventilation to prevent the gases generated by the appliance from flowing back into the room and causing a fire.

USAGE

Remove the transport screws/rods before first use, otherwise serious damage may occur when starting the appliance (see chapter "INSTALLATION AND CONNECTION/Remove transport screws/rods"). Such damage is not covered by the warranty.

Check the appliance for damage during transportation. Never operate the appliance if it is damaged.

Use detergents suitable for the appliance and laundry care. We shall not be responsible for any damage or discoloration of gaskets and plastic parts resulting from incorrect use of bleaching or colouring agents.

Do not attempt to remove any panels or disassemble the appliance.

Do not press buttons with sharp objects such as pins, knives, or nails.

Do not touch the power plug or operate the appliance with wet hands.

This appliance is only suitable for regular washing or drying (for tumble dryer models). It cannot be used for dry cleaning.

Attempting to lift the heavy appliance may cause you to get injured. Do not attempt to lift the appliance yourself as your hands may be cut by its sharp edges.

Do not use protruding parts to move the appliance. Protruding parts on the appliance may be broken when lifting or pushing the appliance.

Do not wash laundry with large buttons or other heavy metal objects, and ensure that all pockets of the laundry are empty. To prevent odours and mildew, open the door at the end of the washing cycle to allow the drum to dry.

Do not leave metal objects in the drum for extended periods.

The door glass may be cracked by strong impacts. Handle with care.

Place laundry completely into the drum to prevent it from getting caught in the door.


Cut off the water supply and unplug the power cord when the appliance is not in use.

Do not place any animals (such as pets) into the appliance.

TRANSPORT/TRANSPORT AFTER INSTALLATION


Assemble the transport screws/rods if you need to move the installed appliance (see chapter "INSTALLATION AND CONNECTION/Moving and Transporting After Installation"). Unplug the power cord before assembling the transport screws/rods!

Turn off the tap and unplug the appliance at the end of the washing cycle. Never unplug the appliance by pulling on the power cord. Always hold the power plug firmly and pull it straight out of the socket.

 Do not use detergents that contain solvents as this could lead to release of poisonous gases, damage to the appliance, and cause the risk of fire and explosion.

Do not open the appliance door by force while it is operating (High-temperature washing/drying).

Do not use the appliance after cleaning with industrial chemicals.

 Water drained during a high-temperature washing cycle is hot. Do not touch the water to prevent burns.

Laundry contaminated with edible oils, acetone, alcohol, petrol, kerosene, detergents, turpentine, wax and wax removers should be pre-washed with hot water and plenty of detergent before placing in the drum.

Use softener or similar products according to the manufacturer's instructions.

Remove all items such as cigarette lighters or matches from pockets.

DANGER OF HOT SURFACE

At higher washing or drying temperatures, the door glass will heat up. Be careful to avoid burns. Make sure children do not play near the door glass. Do not touch the door glass during operation.

WATER OVERFLOW PROTECTION (WITH APPLIANCE SWITCHED ON)

If the water level in the appliance rises above normal level, then the excess water level protection will be activated. It will shut off the water supply and start pumping out the water. The program is interrupted and an error is reported.

Do not wash or dry laundry made of foam rubber (latex foam), shower caps, waterproof fabrics, rubber products, or clothing or pillows containing foam rubber pads in the drum.

WARNING

If your appliance has a drying function, do not interrupt the program until the drying cycle is complete. If you need to interrupt it for any reason, carefully remove laundry to avoid burns. Quickly remove laundry and spread it out so that the heat is dissipated.

CHILD SAFETY

Before closing the appliance door and running the program, make sure there is nothing except laundry in the drum. Make sure no child climbed into the appliance drum and closed the door from the inside.

Do not leave the door open. Children may hang on the door or climb into the appliance, causing damage or injury.

Keep all packaging materials out of the reach of children, as they may pose a danger.

Keep detergent and softener out of reach of children.

SERVICING

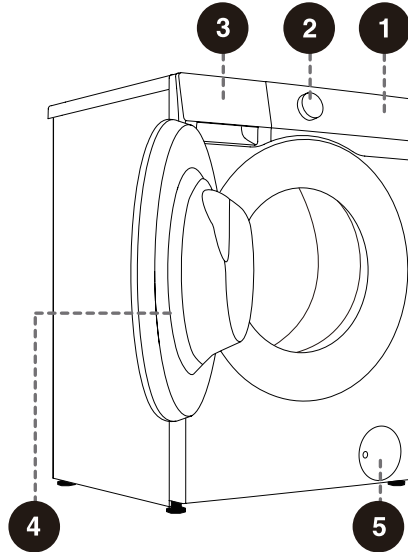
Repair costs resulting from damage caused by incorrect connections, improper installation and use, or repairs made by unauthorised personnel are the responsibility of the user and are not covered by the warranty.

The warranty does not cover consumables, minor colour deviations, increased noise due to appliance age that does not affect the functionality of the appliance, and aesthetic defects on components that do not affect the functionality and safety of the appliance.

PRODUCT DESCRIPTION

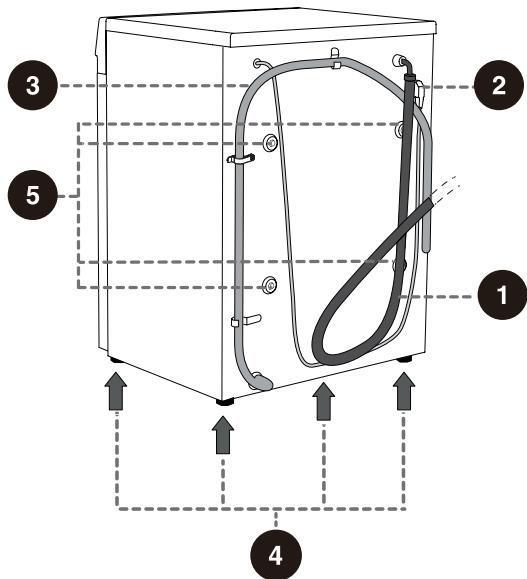
FRONT


- 1 Control unit
- 2 Program selector knob
- 3 Detergent drawer
- 4 Door
- 5 Pump filter cover



BACK

- 1 Water supply hose
- 2 Power cord
- 3 Water discharge hose
- 4 Adjustable feet
- 5 Transport screws/rods



 The illustrations in this manual are for illustrative purposes only. Due to product improvements and series expansion, the appearance, color, and functional components of the product you receive may differ from those shown in this manual. Please refer to the actual product.

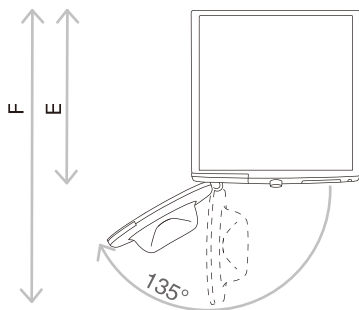
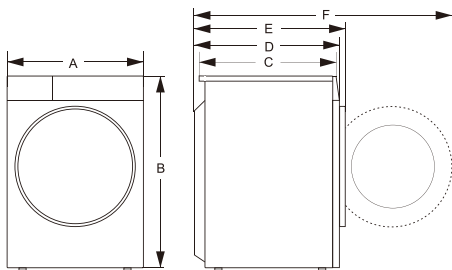
SPECIFICATIONS

(DEPENDING ON THE MODEL)

Model	HWF3S7514X	HWF3S8514X
Maximum load	7.5kg	8.5kg
Net weight	58kg	58kg
Rated voltage	220-240V~	220-240V~
Frequency	50Hz	50Hz
Rated power	1600W	1600W

DIMENSIONS (MM)

Index	Dimensions (mm)
A	595
B	845
C	480
D	510
E	540
F	1020

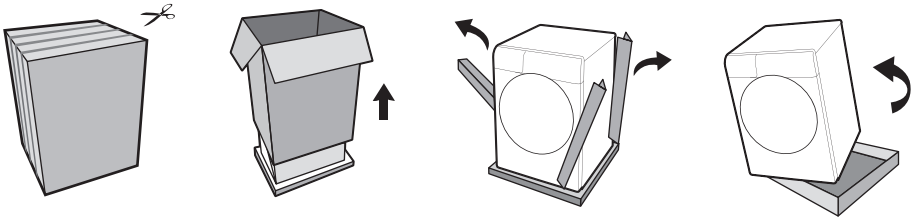


E = appliance depth
F = Depth with door open

INSTALLATION AND CONNECTION

PACKING/PACKAGING

-⚠- Please first remove all the packaging and foam, especially the foam base. When unpacking the device, please do not use sharp objects to damage it. Keep packaging materials (plastic bags, other plastic parts, etc.) out of reach of children.



-⚠- The process of packing the machine is just the opposite of unpacking above.

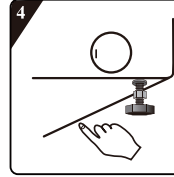
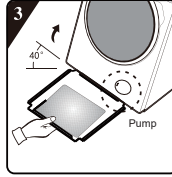
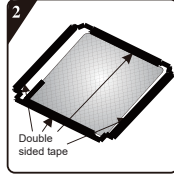
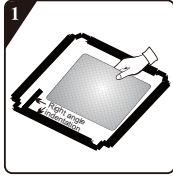
-⚠- Please check the device for any damage. Do not use it if it is damaged, and immediately contact after-sales service.

The accessories included with this device include one or more of the following:

- User Manual;
- 4 transport screw covers;
- Water inlet hose;
- Water drain hose bracket;
- Wrench;
- Noise reduction board/sponge strip/none (subject to the actual model).

Different models have different configurations, and the accessories included with this device are subject to the actual configuration of the model.

HOW TO INSTALL THE NOISE REDUCTION BOARD:



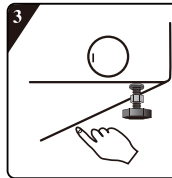
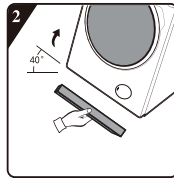
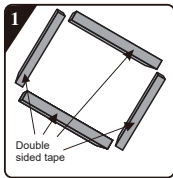
1 Before installing the noise reduction board align and paste the acoustic absorption wool with and along the right-angle impression on noise reduction board (this procedure is unnecessary for some of the models without acoustic absorption wool).

3 Incline the appliance to an angle of 40° and let the side with right-angle notch face towards front of the appliance, as shown in the figure. Insert the side with oblique-angle notch between two foot screws at back of the appliance completely in place. Then, install the noise reduction board and ensure that it contacts with bottom of the appliance closely.

2 Remove surface paper on double sided tape at four sides of the noise reduction board.

4 Press the double sided tape on four sides manually to secure the noise reduction board to the appliance firmly.

HOW TO INSTALL THE SPONGE STRIPS:




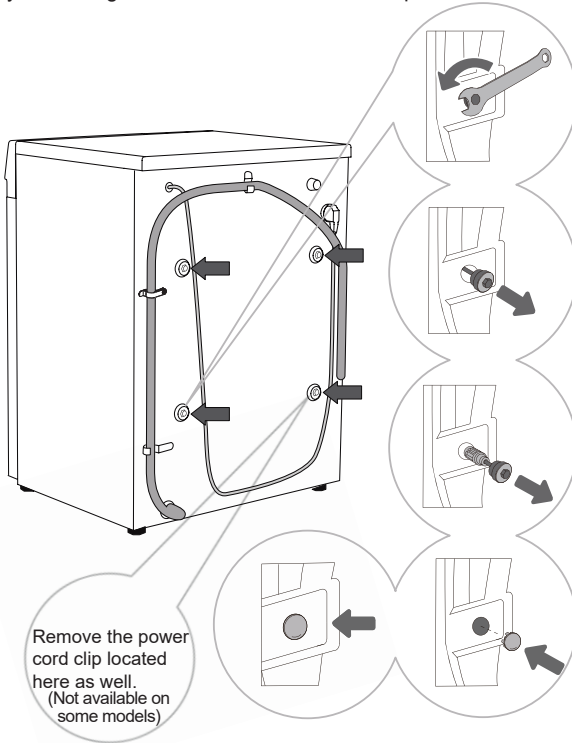
1 Remove surface paper on double sided tape on the sponge strips.

3 Press down to secure the sponge strips firmly.

2 Incline the appliance to an angle of 40° and attach sponge strips on the bottom of the appliance with the two long sponge strips at the front and rear support positions, and the two short sponge strips at the left and right support positions.

REMOVING THE TRANSPORT SCREWS/RODS

 Disassemble the transport screws/rods once all packaging has been removed. A blocked appliance may be damaged when it is switched on for operation. Such damage is not covered by the warranty.




1 Move aside the water discharge hoses and use an appropriate wrench to loosen the four screws on the back in the counterclockwise direction as indicated by the arrows. Loosen the screws approximately 30 mm.

2 Pull all 4 transport screws/rods horizontally.

3 Pull out the transport screws/rods along with the rubber and the plastic parts.

4 Cover the screw holes with plastic plugs. The plastic plugs are supplied in the bag with the appliance user manual (the support set).

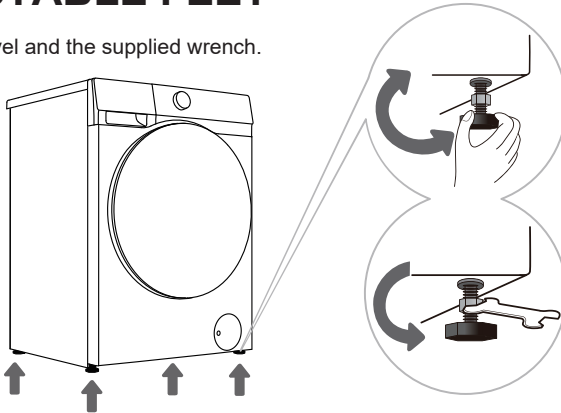
 Save the transport screws/rods in case you have to transport the appliance again later (to reinstall the transport screws/rods, follow the above procedure in reverse order).

INSTALLATION LOCATION

💡 Place the appliance on a solid and level floor to keep it stable. The floor should be clean and dry; otherwise, the appliance may slide. Also, clean the bottom surface of adjustable feet.

ADJUSTABLE FEET

Use a spirit level and the supplied wrench.

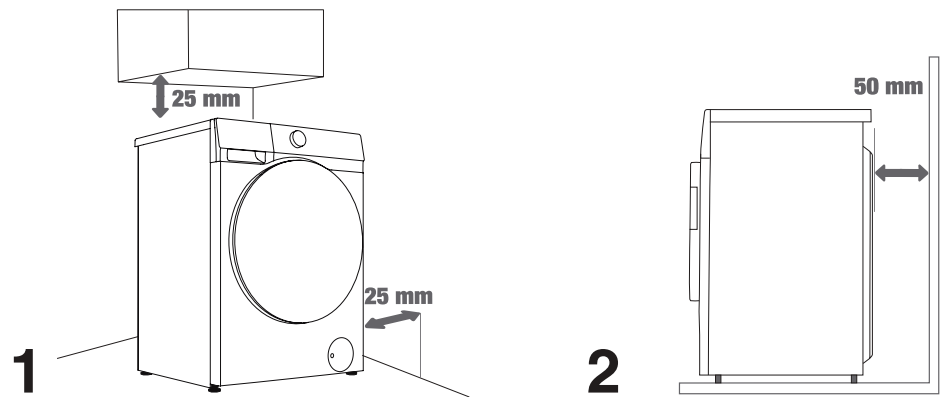


1 Rotate the adjustable feet to level the appliance lengthwise and crosswise. The feet allow levelling by 2 cm.

- 💡 Incorrect levelling of the appliance may cause vibration, appliance sliding across the room, and loud operation. Incorrect levelling of the appliance is not subject to warranty.
- 💡 Sometimes, unusual or louder noise may appear during appliance operation. These are mostly the result of improper installation.

2 After adjusting the height of the feet, use the supplied wrench to securely tighten the locknuts by turning them counterclockwise (see Figure).

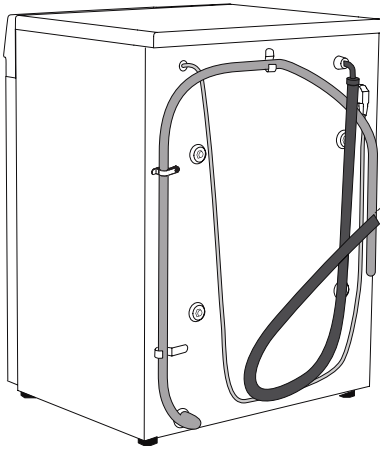
INSTALLATION CLEARANCE



💡 The appliance may not be in contact with a wall or adjacent furniture. For optimum appliance operation, we recommend observing the clearances from the walls as indicated in the figure. In case of failure to observe the minimum required clearances, safe and correct appliance operation cannot be ensured. Moreover, overheating can also occur (Figures 1 and 2).

CONNECTING TO WATER SUPPLY

The supplied water supply hose varies by model. Please choose the appropriate connection method based on the actual water supply hose.



A EUROPEAN
WATER SUPPLY
HOSE CONNECTION

B AQUA STOP
CONNECTION

C CHINESE WATER
SUPPLY HOSE
CONNECTION

💡 For normal appliance operation, the pressure in the water mains should be between 0.1-1MPa (1-10 bar; 1-10 kp/cm²; 10-100 N/cm²). Minimum dynamic water pressure can be determined by measuring the water flow. In 15 seconds, 3 litres of water should flow from a fully open tap.

💡 Only use the water supply hose supplied with the appliance. Do not use any used or other hoses.

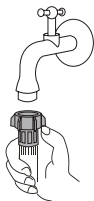
💡 Make sure the hose is not damaged. If the hose is degraded, brittle, or cracked, it has to be replaced.

💡 This appliance is designed for cold water only. Do not connect it to hot water.

EUROPEAN WATER SUPPLY HOSE CONNECTION

Tighten the water supply hose by hand to ensure proper sealing (maximum torque: 2 Nm). Check the sealing for leaks.

Do not use pliers or similar tools as they may damage the nut threads.



AQUASTOP CONNECTION

If an internal tube or hose is damaged, a shut-off system is activated that cuts the water supply to the appliance. In such case, the control glass (a) will turn red. Replace the water supply hose.

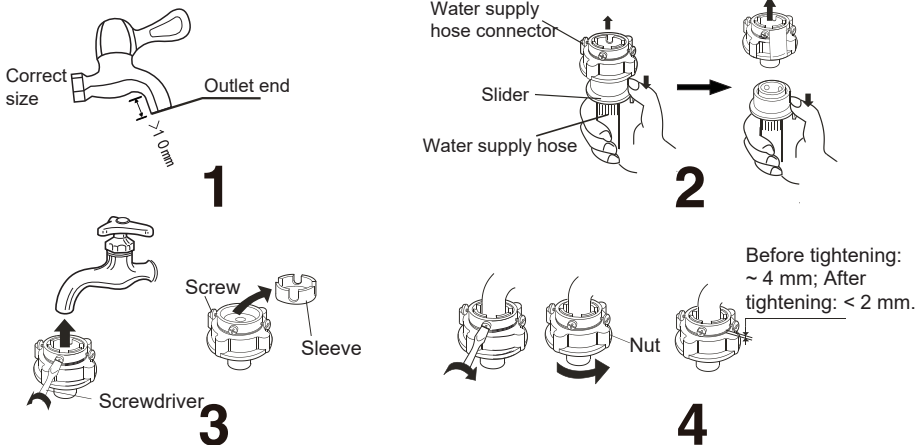


- ⚡- Do not dip the water supply hose with the AquaStop system in water as it contains an electric valve.
- ⚡- The water supply hose can be connected without a non-return valve.

CHINESE WATER SUPPLY HOSE CONNECTION

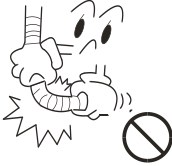
1. Select a suitable tap with a tip length greater than 10 mm. The outlet end must be flat. If it is uneven, smooth it out with a file to prevent leakage after installation (see Figure 1).
2. Push the slider down to disconnect the water supply hose connector from the inlet assembly (see Figure 2).
3. Loosen the four screws on the water supply hose connector, then attach the hose to the tap. If the tap diameter is too large for the connector, loosen the screws and remove the sleeve (see Figure 3).
4. Evenly tighten the four screws on the water supply hose connector and secure the nuts (see Figure 4).
5. If the appliance is to be used once or several times in a week, push the slider down without disconnecting the water supply hose connector to avoid damaging the fixing screws.

-⚡- NOTE: The exposed thread length before tightening the nut is approximately 4 mm and less than 2 mm after tightening (Figure 4).



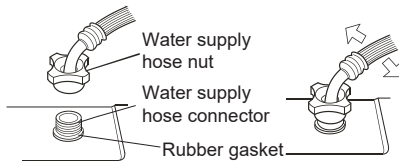
CHECKING THE CONNECTION BETWEEN THE WATER SUPPLY HOSE AND THE TAP

1. Gently pull the water supply hose to check if the connection is secure.
2. Open the tap to check for leaks.
3. The water supply hose should not be twisted or bent.
4. Check the water supply hose before each use to prevent incorrect connection.



CONNECTING THE WATER SUPPLY HOSE TO THE APPLIANCE

Connect the water supply hose nut to the water supply hose connector of the appliance. Tighten the nut and shake it gently to check that it is firmly secured, as shown in the right figure.

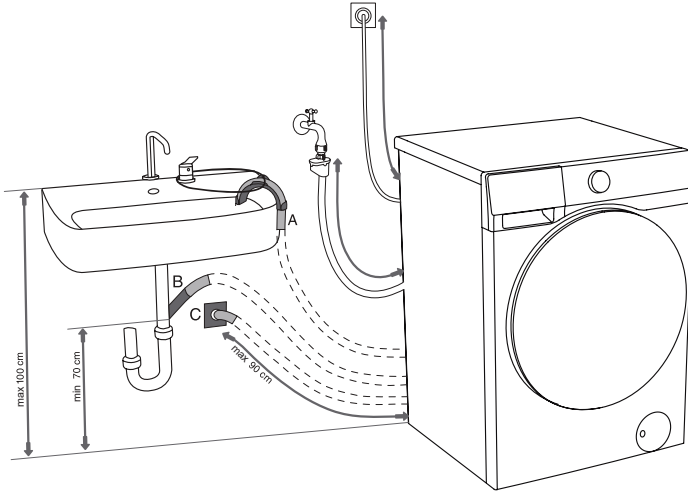


NOTE:

1. Tighten the nut evenly. Avoid rotating the water supply hose, as this may cause damage.
2. Do not remove the rubber gasket. Before each use, check that the gasket is not detached or damaged. If damaged, please contact after-sales service immediately.

CONNECTING AND SECURING THE WATER DISCHARGE HOSE

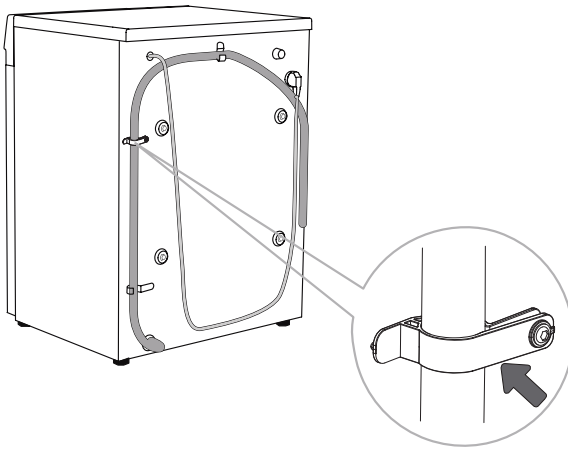
Feed the water discharge hose into a washbasin or a bathtub, or connect it directly to a drain (discharge hose minimum diameter 4 cm). The vertical distance from the floor to the end of the discharge hose may be 70 to 100 cm. It can be attached in three ways (A, B, C).



A The discharge hose end may be placed over a sink or a bathtub. Use a string fed through the opening in the elbow support to attach the hose and prevent it from slipping to the floor.

B The discharge hose may also be attached directly to the sink drain. A sink that is too small is not acceptable. Be careful as the drained water may be hot.

C The discharge hose can also be attached to a wall drain with a trap. Such trap should be properly installed to allow cleaning.



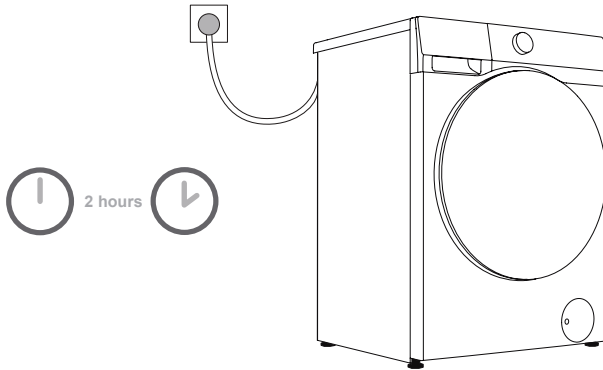
D The discharge hose has to be attached to the clips on the back of the appliance, as shown in the figure.

! These clips must not be removed as this may prevent normal washing.

💡 Make sure the drain hose is not damaged.


💡 If the discharge hose is not correctly attached, safe and correct appliance operation cannot be ensured.






CONNECTING TO POWER MAINS




 **Before connecting the appliance to the power mains, wait for at least 2 hours until it reaches room temperature.**

Connect the appliance to a grounded power socket. After installation, the socket should be freely accessible. The socket should be provided with grounding protection. Information on your appliance is indicated on the rating plate.

 **We recommend using over-voltage protection to protect the appliance in case of a lightning strike.**


-  The appliance may not be connected to the power mains using an extension cord.
-  Do not connect the appliance to a power socket intended for small loads.
-  Do not plug or unplug the appliance when your hands are wet.
-  Any repair and maintenance of the appliance should be performed by trained experts.
-  A damaged power cord may only be replaced by a person authorized by the manufacturer.


TRANSPORTATION AFTER INSTALLATION


 If you need to transport an installed device, first unplug the power plug, turn off the tap, remove the water inlet and drain hoses, and make sure the detergent box and door are closed properly.

Be sure to reinstall the transport screws to prevent vibrations during transport from damaging the device (see "Installation and connection/removal of transport screws"). If you accidentally lose the transport screws, you can order them from the manufacturer.

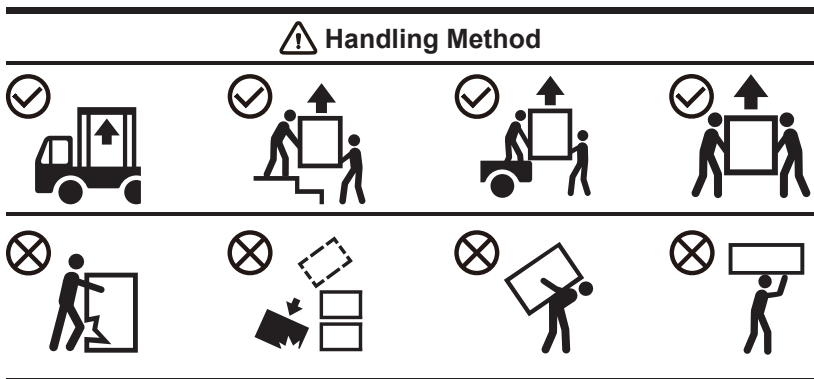
Pack all packaging materials (plastic bags, other plastic parts, etc.).

 The device is heavy. Please use at least two people to move it. When transporting, do not hold protruding parts such as the door, top cover, etc., to prevent them from falling off or being damaged.

 After transport, let the device sit for at least 2 hours before connecting it to the power supply. The device should be installed and connected by trained technicians.

 Please read the instructions carefully before reconnecting the device. Damage caused by improper connection or use is not covered by the warranty.

Transport and Handling Method



BEFORE USING THE APPLIANCE FOR THE FIRST TIME



























FIRST USE

This appliance has been tested at the factory and may contain a small amount of water residue. It is recommended to run a "Drum Clean" (or other high-temperature) program to remove any residual water from the drum.

● Connect the appliance to the power mains and open the water tap. There should not be any laundry in the drum. Select and start the program.

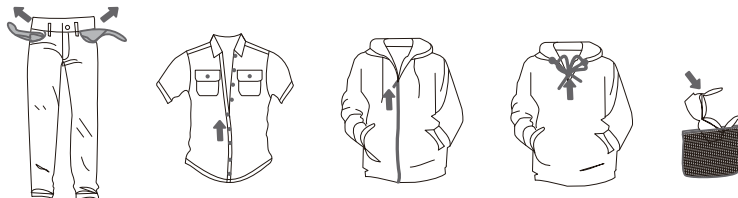
⚠ Do not use any solvents or cleaning agents that could damage the appliance (please observe the recommendations and warnings provided by the cleaning agent manufacturers).

HEED THE LABELS ON THE LAUNDRY



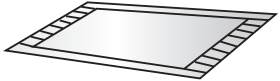


Washing	Max. washing temp. 95°C  	Max. washing temp. 60°C  	Max. washing temp. 40°C  	Max. washing temp. 30°C  	Hand wash only 	Do not wash 
Bleaching	Bleaching in cool water 			Bleaching not allowed 		
Dry cleaning	Dry cleaning with all agents 	Petroleum solvent R11, R113 	Dry cleaning in kerosene, pure alcohol, and R113 	Dry cleaning not allowed 		
Ironing	Hot ironing, max. 200°C 	Hot ironing, max. 150°C 	Hot ironing, max. 110°C 	Ironing not allowed 		
Drying	Dry flat (place on a flat surface) 	Drip dry  Line dry 	High temperature  Low temperature 	Do not tumble dry 		

PREPARING THE WASHING PROCESS



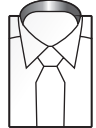



- Sort the laundry by type of fabric (cotton, blends, silk, wool, etc.), care label instructions, colour (white, coloured), and soiling.
- Empty pockets; remove metal items that may damage the laundry or appliance; fasten buttons and turn clothing with buttons or embroidery inside out; close all zippers; tie strings on clothing with drawstrings.
- Place sensitive clothes and small or lightweight items in a special-purpose laundry washing bag and wash them together with other laundry.
- Turn items prone to pilling or long-pile fabrics inside out before washing.
- Stains that are left for too long can be difficult to remove. Treat soiled areas such as cuffs and collars before washing (see chapter "Stain Removal Tips").
- Do not wash heavy comforters, plush toys, or items in laundry washing bags separately in the drum to avoid imbalance alarms.





NON-WASHABLE AND NON-DRYABLE LAUNDRY


 <p>Leather and fur products (risk of deformation)</p>	 <p>Rayon and its blended products (risk of discolouration or deformation)</p>	 <p>Large thick rubber cushions (risk of damage or malfunction)</p>
 <p>Hats with hard materials (risk of appliance damage and malfunction)</p>	 <p>Cushions, pillows, articles with cotton wadding, foam and other sponge materials, carpet covers (risk of damage or malfunction)</p>	<p>Others: Wrinkled or embossed clothes; coated down jackets; crepe fabrics; easily deformed clothes (suits, jackets, ties, dresses, etc.); easily fluffing clothes (velvet, cotton flannel).</p>

NON-DRYABLE LAUNDRY (FOR TUMBLE DRYER MODELS)

 <p>Any clothing marked with any of the above symbols (May damage the clothing)</p>	 <p>Tight-fitting clothes, long socks (May cause damage or deformation)</p>	 <p>Starched clothes</p>
 <p>Mats and furry garments (Possible damage or malfunction)</p>	 <p>Quilt (Possible damage or malfunction)</p>	 <p>Clothes with lace, embroidery, and new synthetic fibers (ultra-fine fibers) (May cause deformation)</p>

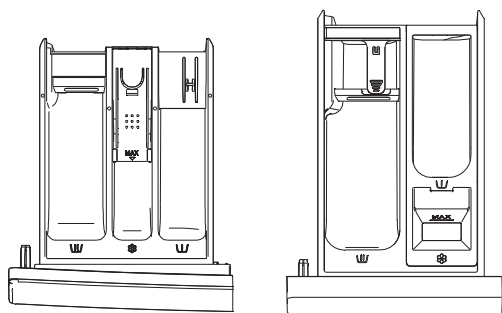
 Non-washable and non-dryable items include but are not limited to the above-mentioned garments.

 Please check the garment label to confirm that the garment has washable/dryable symbols.

 Wet clothes that are still dripping water are not suitable for drying and may cause the machine to alarm.

ADD DETERGENT/SOFTENER

DETERGENT BOX



Style 1

Style 2

(The style of the detergent box depends on the model)

DETERGENT BOX	
	Prewash compartment
	Main wash compartment
	Softener compartment

PRECAUTIONS FOR USE

1. Always use a high-efficiency neutral low-foaming detergent suitable for this appliance. The amount of detergent to be used depends on the type of clothing, degree of soiling, color of clothing, and washing temperature. Please add an appropriate amount according to the detergent manufacturer's instructions.
2. Excessive detergent may cause foaming, which will affect the washing effect. If the appliance detects too much foam, it may pause the program for defoaming.
3. If insufficient detergent is used, it may result in poor washing performance and could also lead to the formation of limescale in the drum and water hoses.
4. When adding powder detergent, we recommend adding it immediately before the wash program starts. If you add it in advance, make sure that the detergent box compartment is completely dry; otherwise, the powder detergent may harden and clump before the washing program starts.
5. If you are using the "Reservation" function (if available) or have selected the "Prewash" function (if available), do not use liquid detergent, as liquid detergent will be dispensed immediately and may become sticky in the dispenser drawer or drum.
6. Do not allow detergent to harden, as this may cause clogging, poor rinsing, or odor.
7. Pour the softener into the compartment marked with the "☼" symbol in the detergent box and follow the instructions on the softener packaging. Do not add more softener than the MAX mark on the softener compartment, otherwise the softener will be added to the clothes too early, resulting in poor washing results.
8. Keep detergent and softener out of the reach of children.
9. Corrosive descaling agents may damage the appliance. Do not use solvents. Do not wash clothing that has been cleaned with solvents or flammables.
10. If you use modern phosphate-free detergent, white residue (streaks, etc.) may appear on black clothing. In this case, you can scrub off the white stripes and then use a liquid detergent.
11. Before starting a program, please gently close the detergent box. Closing the detergent box forcefully may cause the detergent to spill into other compartments or be placed in the drum earlier than the time set in the program. When closing the detergent box, be careful not to get your hands caught.
12. At the end of the program, a small amount of water may remain in the dispenser drawer.

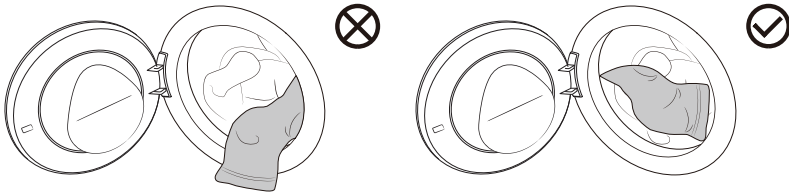
PUT IN THE LAUNDRY

Open the machine door, make sure there is no foreign matter in the drum, and put the clothes loosely into the drum.

Close the machine door and hear a "click" sound, indicating that the machine door is closed tightly.

⚠ Do not overload the drum! Refer to the "Program Table" for the maximum load. If the drum is too full, the clothes may not be cleaned effectively.

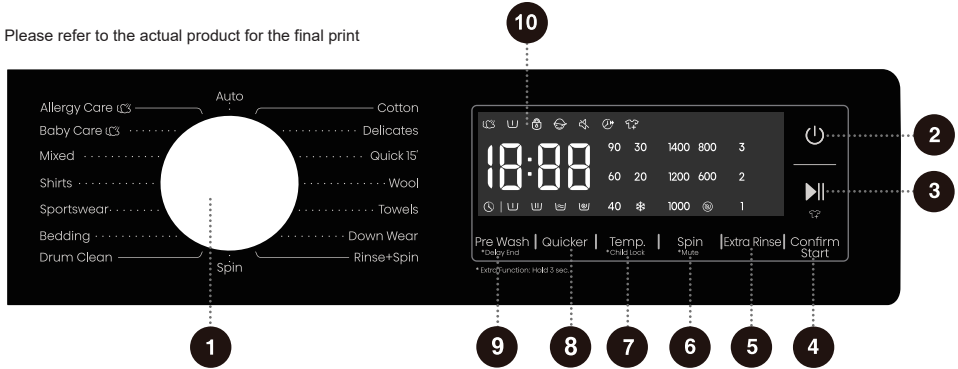
⚠ Please put the laundry into the drum completely to prevent the clothes from getting caught in the door.



DFC; F5AG5B8': I B7H-CBG

7cbf c`DUbY

Please refer to the actual product for the final print



0% mWY'GY YWc f

Turn the knob to select the program.

& Dck Yf`U

Used to turn on/off the device power.

▮ GHUf#DUi gY▶||

Used to enter the ready-to-start state, activate the start process, and pause the program.

(7 cbZfa`GHUf h

Used to confirm and ultimately start the device. It must be pressed within 60 seconds after the "GHUf h Pause" key is pressed when the device is in the start preparation state.

) 9I fUFJbgY

This function changes the default number of rinse cycles.

* GdJb

Press briefly to select the drying spin speed of the program.

† Ai H Y

Long-press turns the Mute function on/off.

+ FYa d"

Press briefly to select the washing temperature of the program.

†7\ JX`@W

Long-press turns the Child Lock function on/off.

Ei jW_Yf`U

This function reduces the program's washing time.

- DfY'K Ugl`U

Short press to turn on/off the prewash function of the program.

†8 YUm9 bX`U

Press and hold to schedule washing clothes at a convenient time.

0/\$ 8 jgd`Um

Used to display the remaining time of the program, reservation time, fault code, and other related information.

†9I fU: i bWjcb.`<c`X`" gYw

For extra function: Press and hold for 3 seconds.

PROGRAM TABLE

Turn on the power of the appliance and turn the main knob to select the appropriate program (depending on the type of clothing and the degree of dirtiness). During operation, the main knob will not turn automatically.


Program	Maximum load (kg)		Maximum speed (rpm)	Program description
	7.5	8.5		
Cotton (☼, 20°C, 30°C, 40°C, 60°C, 90°C)	7.5	8.5	1400	This program is suitable for washing cotton or linen fabrics that are moderately and heavily soiled.
Delicates (☼, 20°C, 30°C, 40°C)	2	2	600	This program is suitable for washing machine washable silk fabrics (refer to the laundry label requirements). It is not recommended to add softener for this program.
Quick 15' (☼, 20°C, 30°C, 40°C)	1	1	800	It is suitable for washing a small amount of laundry or lightly soiled laundry. If you change the default setting, the washing time will be longer.
Wool (☼, 20°C, 30°C, 40°C)	2	2	600	It is suitable for washing machine washable woolen clothes (refer to the laundry label requirements).
Towels (☼, 20°C, 30°C, 40°C)	2.5	2.5	1400	This program is suitable for washing lightly soiled cotton fabrics (such as towels).
Down Wear (☼, 20°C, 30°C, 40°C)	2	2	600	This program is suitable for machine-washable items filled with down, such as pillows, down jackets, and bedspreads, as well as items filled with synthetic fiber.
Rinse+Spin —	7.5	8.5	1400	This program is for separate rinsing and spinning of laundry. Do not add detergent for this program.
Spin —	7.5	8.5	1400	This program is used for separate spin of laundry. Do not add detergent/softener for this program.
Drum Clean (90°C)	/	/	800	This program is used to clean the drum and remove detergent residues, as well as bacteria that accumulate and grow when washing at low temperatures. Do not add detergent/softener for this program.
Bedding (☼, 20°C, 30°C, 40°C, 60°C)	2	2	1400	It is suitable for washing large-sized clothes, such as curtains, sheets, quilt covers, etc.
Sportswear (☼, 20°C, 30°C, 40°C)	3	3.5	1000	This program is suitable for washing machine-washable sportswear clothing.


Program	Maximum load (kg)		Maximum speed (rpm)	Program description
	7.5	8.5		
Shirts (☼, 20°C, 30°C, 40°C, 60°C)	2	2	800	This program is suitable for washing shirts made of cotton, linen, synthetic fiber, or blended fabrics.
Mixed (☼, 20°C, 30°C, 40°C)	4	4.5	1400	This program is suitable for lightly and moderately soiled cotton or synthetic fiber garments.
Baby Care (40°C, 60°C, 90°C)	2	2	1400	This program is suitable for washing baby clothes, underwear, etc., and sterilizes them through high temperature. It is not recommended to add softener for this program. This program includes the steam wash function by default and it cannot be canceled.
Allergy Care (60°C)	2	2	1400	It is suitable for washing clothes that are resistant to high temperatures and not easy to fade, and removes allergens such as pollen, mites, and parasites through high temperatures. This program includes the steam wash function by default and it cannot be canceled.
Auto (☼, 20°C, 30°C, 40°C)	4.5	5	1400	This program is suitable for washing lightly soiled clothes.

The test program: cotton 40°C, 1400rpm, press extra rinse 3 times is recommended for a normally soiled load at rated capacity of 7.5kg and 8.5kg.

Note

- (1) Water temperature: Select the appropriate water temperature according to the selected washing program. When washing, follow the clothing manufacturer's washing label or instructions to avoid damaging the clothing.
- (2) The actual water temperature may differ from the stated program temperature.
- (3) Test results depend on water pressure, water hardness, inlet water temperature, room temperature, type and amount of laundry, degree of soiling, detergent used, power supply fluctuations and other options selected.
- (4) If you add too much laundry during the wash cycle, the laundry may be washed less efficiently because the machine initially detects a lower weight and adds less water. Insufficient water can also cause damage to the laundry and the wash time will be longer.
- (5) Drum Clean (if available): The drum must be emptied before using the Drum Clean program. It is recommended to run it at least once a month.
- (6) For descaling, use a descaling agent with corrosion protection (only use non-corrosive descaling agents and follow the instructions for use of the descaling agent). Run the "Drum Clean" (or other high temperature) program several times to remove any descaling agent residues and complete descaling. It is recommended to descale at least once every six months.

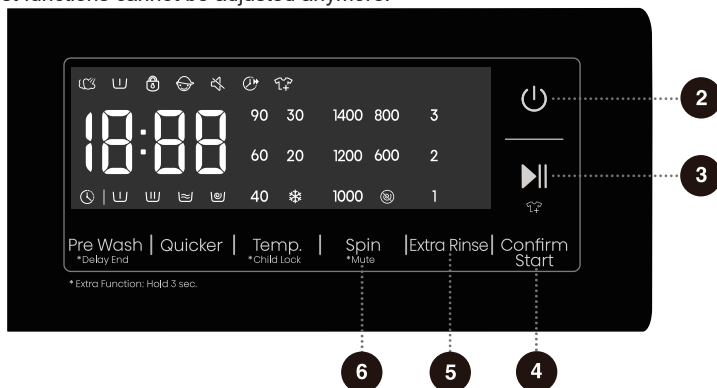
 The maximum or nominal load applies to laundry prepared in accordance with the relevant provisions of standard IEC60456.

 For better washing performance, we recommend that you fill no more than 2/3 of the drum volume when using the Cotton program.

ADDITIONAL SETTINGS AND FUNCTIONS

The program comes with default settings, and some functions can be changed by user. You can adjust the settings by pressing the corresponding function button (before pressing the **Start/Pause** button). Some settings cannot be selected or changed in some programs. These settings will not light up, and an acoustic signal sounds when the corresponding button is pressed (see "FUNCTION SELECTION TABLE").

Most functions can only be set in standby mode, i.e., before a program starts. After starting the program, most functions cannot be adjusted anymore.



2 Power

Used to turn the device's power on or off.

If you need to shut down the program during operation, press and hold the "Power" button to shut down.

In standby mode, after a program ends, if no operations are performed for a period of time, the device will automatically shut down.

3 Start/Pause

Used to enter the ready-to-start state, activate the startup process, and pause the program.

Press this button to enter the ready-to-start state and start a 60-second countdown. Within these 60 seconds, the device awaits the confirmation operation of the "Confirm Start" button. If the "Confirm Start" button is not pressed within 60 seconds, the device automatically exits the ready-to-start state.

4 Confirm Start

To ensure child safety, the "Confirm Start" button must be pressed within 60 seconds after the "Start/Pause" button is pressed. This button serves as the final confirmation for startup. The device will formally start only if the "Confirm Start" button is pressed while it is in the ready-to-start state.

 - The device cannot be started if the door is not closed or the door lock is not locked.

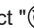
5 Extra Rinse

This function changes the default number of rinse cycles.

Before starting the program, press this button to cycle through the set gears. The number of "Extra Rinse" selectable gears is 1/2/3 times. Different gears can be set for each program.

The default rinse times of the program plus the "Extra Rinse" times are no more than 5 times.

6 Spin

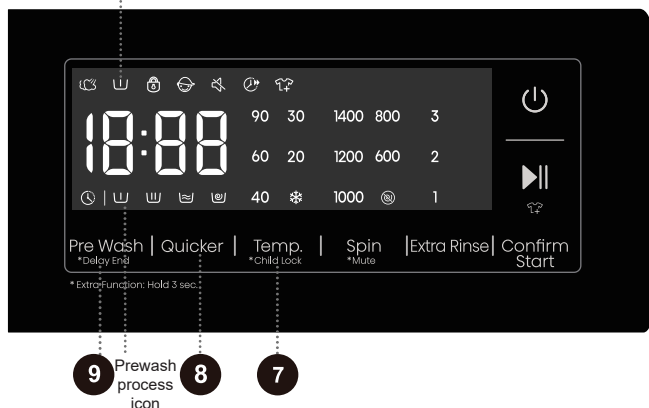
This function can adjust the program's spin speed before the program starts. The current speed setting of the program is displayed for the first time. Press this button to cycle through the available options (select "", the device only drains water without dehydrating).

*Mute

This function shields other sounds except the alarm sound and reduces noise.

When the device is in standby, pause, or running state, press and hold this button; the mute icon "🔇" will light up, and the mute function will be enabled. The same operation can be used to turn off the Mute function, and all sounds will be turned back on.

Prewash function icon



7 Temp.

This function changes the temperature of the selected program.

Each program has a preset temperature. Before starting the program, press this button briefly to cycle through the set temperature gears ("❄️" indicates cold wash). The heating temperature that can be set for each program is different.

*Child Lock

To prevent children from operating the device accidentally and protect their safety, this device is equipped with a Child Lock function.

Long-press the button, the Child Lock icon "🔒" lights up and the child lock function is turned on. The same operation can be used to disable the Child Lock.

After the Child Lock function is set, all buttons except the power button are locked.

After the program ends, the child lock function is automatically cancelled.

8 Quicker

This function can shorten the washing time and speed up the washing process.

Press this key. When the icon lights up, the quick wash mode is activated. For each reduction in the time gear setting, the maximum load capacity of the clothes decreases to half of that of the previous gear setting. Press this button several times until the icon turns off, which means the function is disabled, and the washing time and maximum load capacity return to the initial state. The selectable acceleration gears may vary depending on the model and program.

For programs with automatic weighing, enabling this function will pause automatic weighing; once disabled, the automatic weighing function will resume.

9 Pre Wash

This function can add a prewash process before the main wash phase to enhance the washing effect.

Before starting the program, press this button briefly to turn this function on or off.

After this function is enabled, the prewash function icon "U" lights up. After the program starts, the prewash process icon "U" flashes.

After the prewash process is finished, the prewash process icon turns off. The prewash function icon stays on until the end of the program.

When you select the prewash function, please add detergent to the prewash compartment of the detergent box.

*Delay End 🕒

This function allows you to schedule laundry at your convenience.

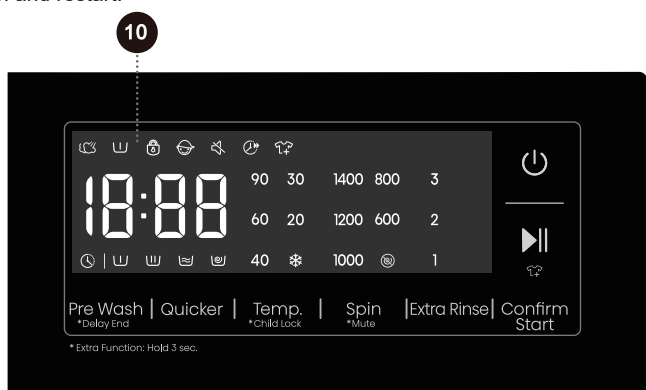
After selecting the program and function, make a reservation. Press and hold this button to schedule the start; press and hold again to cycle through the preset time gears. Each press adjusts the time by 1-hour increments. The maximum selectable time is 24 hours. The reservation time is the end time of the program, including the entire program running time, so the reservation time must be greater than the program running time.

After selecting the reservation time, first press the "Start/Pause" button, then press the "Confirm Start" button within 60 seconds to confirm and begin the reservation process.

When the reservation process is in progress, the icon 🕒 on the display lights up or flashes. When the reservation process finishes, the icon goes off.

If the Delay End function has been selected before the program starts, it can be canceled by selecting another program or function button.

After the program is started, if you need to cancel the Delay End function, you need to shut down and restart.





10

Display

Used to display the remaining time of the program, reservation time, fault code, and other related information.

Icon description

	Door lock indicator icon. When the door lock is locked, this icon lights up. Do not force the door open at this time to avoid causing injury.
	Add Clothes icon. When this icon lights up, it indicates that you can open the door to add clothes.

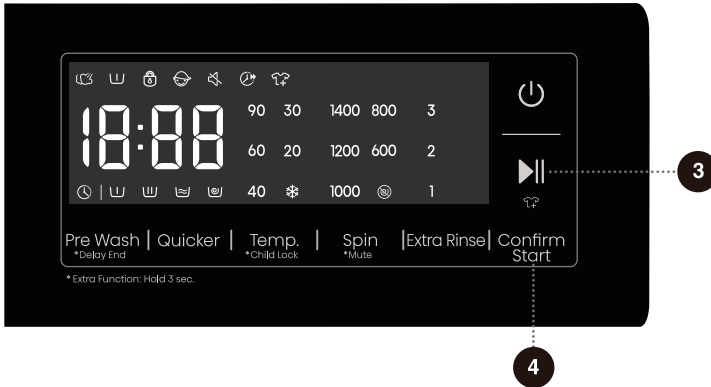
FUNCTION SELECTION TABLE

Program	Extra Rinse	Spin	*Mute	Temp.	*Child Lock	Quicker	Pre Wash	*Delay End
Cotton	•	•	•	•	•	•	•	•
Delicates	•	•	•	•	•	-	-	•
Quick 15'	•	•	•	•	•	-	-	•
Wool	•	•	•	•	•	-	-	•
Towels	•	•	•	•	•	-	•	•
Down Wear	•	•	•	•	•	-	-	•
Rinse+Spin	•	•	•	-	•	-	-	•
Spin	-	•	•	-	•	-	-	•
Drum Clean	-	-	•	-	•	-	-	•
Bedding	•	•	•	•	•	-	•	•
Sportswear	•	•	•	•	•	-	•	•
Shirts	•	•	•	•	•	-	-	•
Mixed	•	•	•	•	•	•	•	•
Baby Care	•	•	•	•	•	•	•	•
Allergy Care	•	•	•	-	•	-	•	•
Auto	•	•	•	•	•	-	•	•

- Function optional
- Function not optional
- Function default and cannot be canceled


START THE PROGRAM

Select the program and additional functions, and confirm that the detergent has been added to the detergent drawer. First, press the "Start/Pause" button, then press the "Confirm Start" button within 60 seconds to start the program.



After the program starts, except for turning Child Lock on/off, turning Mute on/off (if available), and adjusting Water Level (if available), other settings cannot be changed.

When the program starts, if the display shows "---", it indicates that the clothes are being weighed.

 Some programs automatically detect the weight of clothes before washing, and the program duration will be automatically adjusted.

END OF THE PROGRAM

When the program finishes, the device emits an acoustic signal and "End" appears in the display. If you do not perform any operation for a period of time, the device will automatically shut down.

1. Turn off the device power.
2. Turn off the water tap.
3. Unplug the power cord from the outlet.
4. Open the machine door.
5. Remove the clothes from the drum.

PROGRAM INTERRUPTIONS AND CHANGES

Interrupt procedure

To interrupt or cancel a program while it is running, you need to turn off the power of the device.

Change program

If you want to change the program while it is running, you need to turn off the power of the device first; After powering on, reselect the program and additional functions, press the **"Start/Pause"** button, and press the **"Confirm Start"** button within 60 seconds to confirm and start the program.

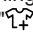
Pause the program

You can press the **"Start/Pause"** button to pause the program at any time during the program operation. When the remaining program time on the display flashes, the program is paused. If the following conditions are met, the door lock is unlocked and the machine door can be opened.

1. The temperature in the drum must be suitable;
2. The water level in the drum must be below a specific value.

To resume the program, first close the door, then press the **"Start/Pause"** button, and press the **"Confirm Start"** button within 60 seconds to confirm and start the program. The wash program is paused and started again, and the program continues from where it was interrupted. The spin program is paused and restarted, and the program starts from the beginning of the spin cycle.

Add Clothes

If you need to add clothes during the program, after confirming that the water level and temperature in the machine are safe, press the **"Start/Pause"** button to pause the program. The remaining program time on the display will flash, and the door lock icon will go out (the **"Add Clothes"** icon  will light up for some models), and then you can open the door to add clothes. If the door lock icon does not go out, the door opening conditions are not met and you cannot add clothes.


Fault

If the device fails, the program will be interrupted.

If this happens (see **"FAULT CODES AND TROUBLESHOOTING"**), the device will sound an alarm and the fault code (FXX) will appear on the display.

Power failure

In the event of a power failure (blackout), the washing program will be interrupted. When the power supply is restored, the program will continue running from the stage where it was interrupted.

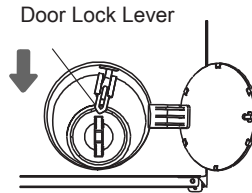
 **If there is still water in the appliance after a power outage, do not open the door before manually draining the water using the drain pump filter.**

EMERGENCY DOOR OPENING


If the door cannot be opened due to special reasons such as power failure, please use the door lock lever at the door cover of the pump to open the door urgently.


 **Note:**

1. Do not use this function during normal operation of the device.
2. Before operation, make sure that the inner drum has stopped rotating, the water temperature is not hot, and the water level is below the feeding port to avoid danger. If the water level is too high, drain the water through the drain hose (if any) or by slowly unscrewing the drain pump filter.
3. Operation method: Open the door cover of the drain pump, use the tool to pull down the door lock lever, and then open the door (as shown in the figure). After opening the door, please restore the door lock lever in time.



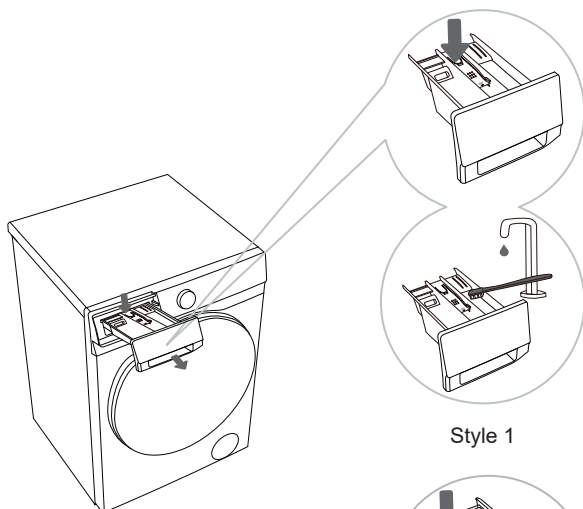
MAINTENANCE & CLEANING

 Regular maintenance can extend the appliance's service life. Before maintenance, please be sure to cut off the power supply and turn off the faucet.

 Children are not allowed to clean or perform any maintenance work on this device without supervision.

CLEAN THE DETERGENT DRAWER

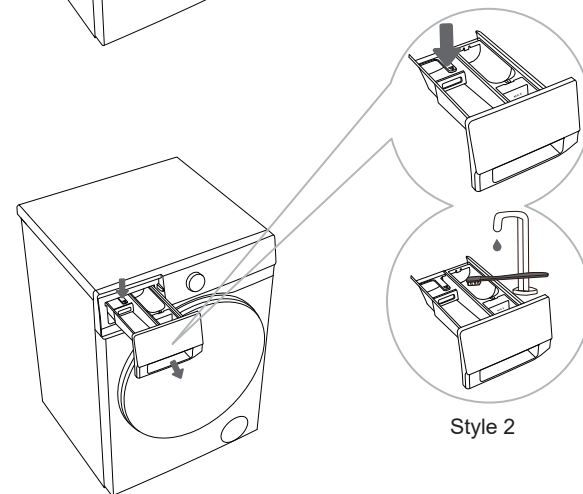
 Clean the detergent box regularly.




Style 1

1 Press the small tab in the detergent box to pull out the detergent box. (See the position indicated by the arrow in the left figure.)

2 Clean the detergent box with a brush and wash it with tap water, then wipe it. Also, remove any detergent residue from the bottom of the housing. Then reinstall it back together.

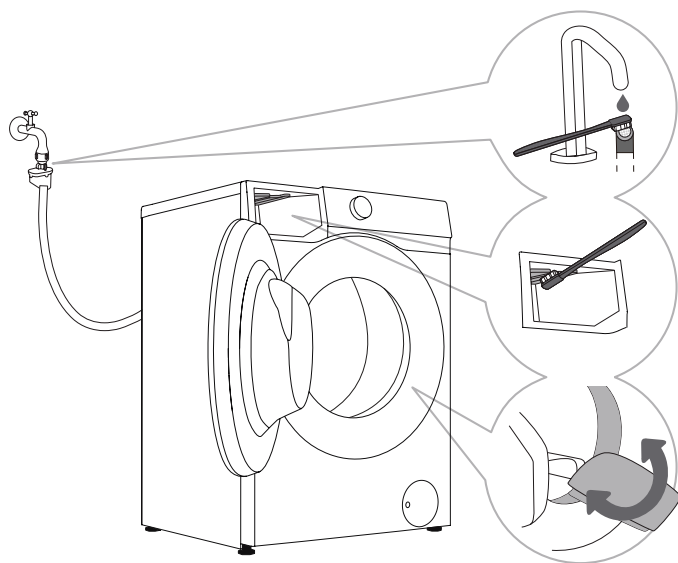


Style 2

 The type depends on different models.

 Do not place the detergent box in the dishwasher for cleaning.

CLEAN THE WATER INLET HOSE, DETERGENT DRAWER OUTER COMPARTMENT, AND RUBBER DOOR GASKET




1 Clean the water inlet hose filter regularly.

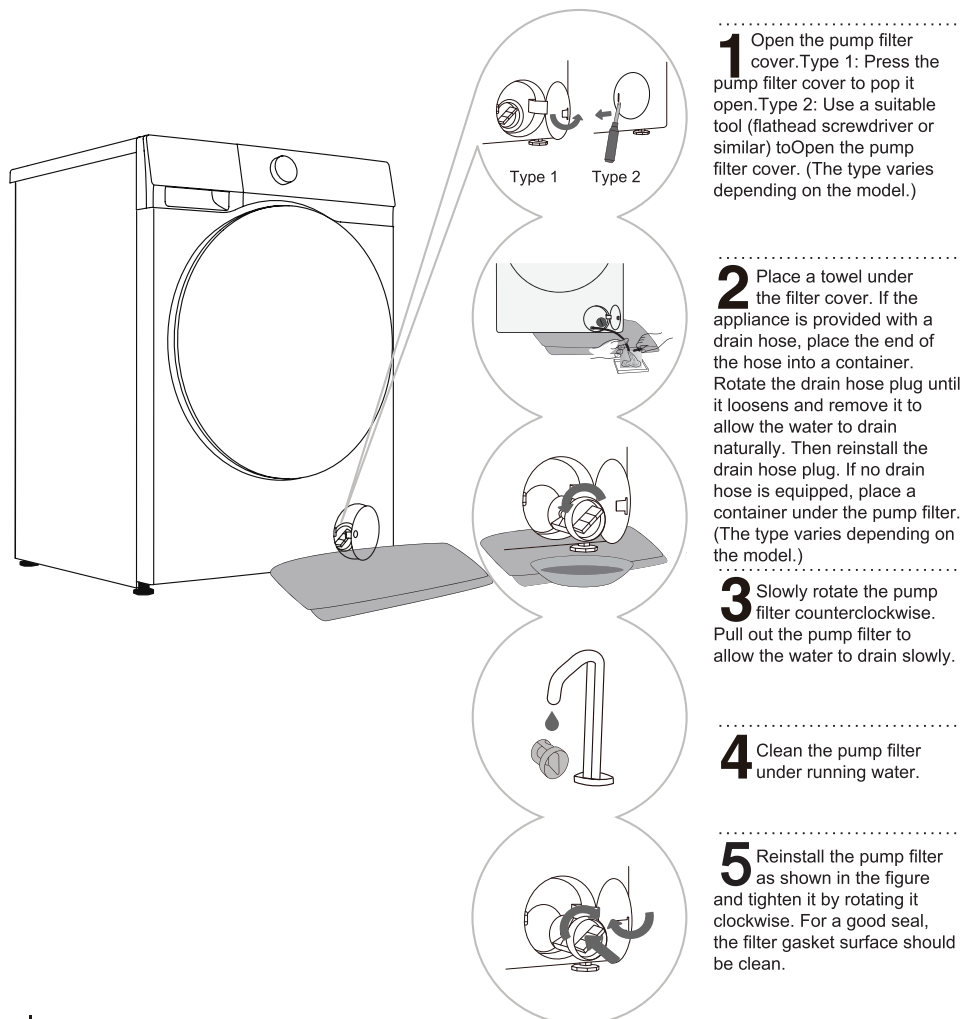
2 Please use a brush to clean the outer compartment of the detergent box, especially the nozzle on the upper side of the outer compartment in the detergent box.

3 After washing, wipe the rubber door seal to extend its life. After washing, please keep the machine door slightly open to release moisture and then close it to prevent the door seal from getting moldy.

CLEANING THE PUMP FILTER

 Water may be spilled when cleaning the pump filter. It is therefore recommended to place an absorbent cloth on the floor.

Make sure the water has cooled down before you release it from the appliance.




1 Open the pump filter cover. Type 1: Press the pump filter cover to pop it open. Type 2: Use a suitable tool (flathead screwdriver or similar) to open the pump filter cover. (The type varies depending on the model.)


2 Place a towel under the filter cover. If the appliance is provided with a drain hose, place the end of the hose into a container. Rotate the drain hose plug until it loosens and remove it to allow the water to drain naturally. Then reinstall the drain hose plug. If no drain hose is equipped, place a container under the pump filter. (The type varies depending on the model.)


3 Slowly rotate the pump filter counterclockwise. Pull out the pump filter to allow the water to drain slowly.


4 Clean the pump filter under running water.

5 Reinstall the pump filter as shown in the figure and tighten it by rotating it clockwise. For a good seal, the filter gasket surface should be clean.

 It is recommended to clean the pump filter once every two months.

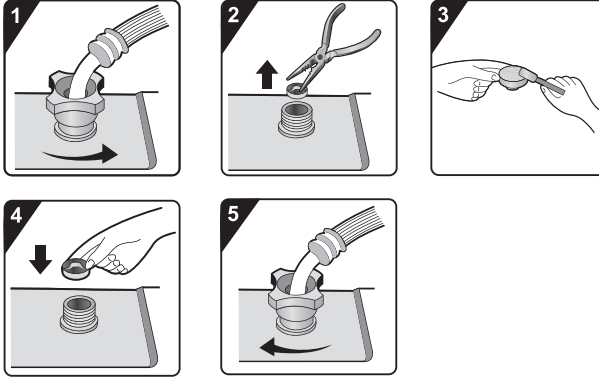
 It is recommended to clean the pump filter after washing quilts, bath towels, and other lint-prone items.

 Also clean the pump filter if the appliance cannot start the spinning cycle or when there is debris in the pump (buttons, coins, hair pins or clips etc.).

 Do not open the pump filter while the appliance is running. Do not operate the appliance until the pump filter is securely installed to avoid leaks or malfunctions.

CLEANING THE INLET FILTER

Check and clean the inlet filter regularly.
Clean the inlet filter immediately if water supply is slow.
Operation procedures are as follows:




1 Close the water tap and unscrew the water supply hose.

2 Remove the inlet filter.


3 Clean the inlet filter.


4 Reinstall the inlet filter.

5 Connect the water supply hose. Open the water tap and ensure there are no leaks at the connection.


 The inlet filter collects impurities and sediment from the water supply. It is recommended to clean it at least every six months, or more frequently if you have hard water or notice scale buildup.

CLEAN THE MACHINE BODY

 Always disconnect the device from the power supply before cleaning the machine body. Clean the machine body and panels with a soft wet cloth. Then, use a soft, dry cloth to wipe them.

 Do not use any solvents or cleaning agents that could damage the appliance (please observe the recommendations and warnings provided by the cleaning agent manufacturers).

Clean the appliance door with a damp cloth, and then wipe it dry with a soft, dry cloth.

 Do not use excessive water to clean the appliance.

TROUBLESHOOTING

The appliance is equipped with a number of automatic safety features to detect faults and take effective safety measures in a timely manner.


These faults are usually minor and can be rectified quickly.

If the appliance cannot operate normally, Please refer to the warning message for the appropriate action.

If the recommended troubleshooting methods do not resolve the problem, please contact after-sales service.

The user will assume all liability for any consequences arising from repairs carried out by themselves or unauthorised personnel.

Fault phenomenon	Recommended countermeasures
<p>Machine fails to start</p>	<ul style="list-style-type: none"> ◇ Check whether the power cord is plugged into the socket and whether the socket is working functionally (by testing it with another appliance). ◇ Check whether the door is properly closed. ◇ Check whether the "Start/Pause" button is pressed.
<p>The device stops operating under normal working conditions</p>	<ul style="list-style-type: none"> ◇ Check if the machine door is closed properly. If not, close the door, and press the "Start/Pause" button. ◇ Check if there is too much foam. When the device detects too much foam, it enters drainage or resting state, or water intake for defoaming treatment. At this time, the program pauses, and the screen displays the time unchanged. After defoaming is completed, the equipment will automatically resume operation. If foam overflow or water leakage is detected, please wipe off the foam to prevent corrosion of the device. ◇ Check whether safety protection is enabled on the device.
<p>Time displayed at the start of the program increases or decreases</p>	<p>This is the adaptive adjustment of the appliance to the factors that influence the washing time.</p> <ul style="list-style-type: none"> ◇ Excessive foam. ◇ Unbalance caused by large laundry. ◇ Extended heating time due to low water intake temperature. <p>As a result of these factors, the remaining time displayed is recalculated and updated accordingly (if the appliance is making an unbalance adjustment, the time displayed remains unchanged). In addition, the appliance detects the load during the water supply and adjusts the program time accordingly (fuzzy control).</p>
<p>Residual detergent or other additives in the detergent drawer after washing</p>	<ul style="list-style-type: none"> ◇ Check whether the detergent drawer is correctly installed and kept clean. ◇ Check whether the water pressure is normal and whether the inlet filter is clogged (see chapter "MAINTENANCE AND CLEANING").
<p>Odour in the machine</p>	<ul style="list-style-type: none"> ◇ The odour may be caused by the rubber materials inside the appliance. It is the rubber smell, which dissipates after a few uses.

 The warranty does not cover the faults or failures resulting from external factors (lightning strike, power grid failures, natural disasters etc.).

Fault phenomenon	Recommended countermeasures
<p>Abnormal sound/noise during washing</p>	<ul style="list-style-type: none"> ◇ Foreign objects such as keys, coins or pins may have fallen into the drum. Stop the appliance and check for foreign objects in the drum. If noise persists after restarting, please contact after-sales service. ◇ Laundry may be unevenly distributed in the drum. Pause the program, unlock the door, and redistribute the laundry.
<p>Intense vibrations during spinning</p>	<ul style="list-style-type: none"> ◇ Check whether the appliance is level and whether all four feet are firmly seated on the floor. ◇ Check whether the transport screw/rods have been removed. Transport screw/rods must be removed before using the appliance. ◇ Check whether all foam supports have been removed from the bottom of the appliance.
<p>Poor spinning effect</p>	<p>The appliance is equipped with a balance detection and correction system. After detecting unbalance caused by heavy laundry (e.g., bathrobes) and several spinning attempts, the system automatically reduces the spinning rate or even stops the spinning process to protect the appliance.</p> <ul style="list-style-type: none"> ◇ If the laundry is still very wet after spinning, take the laundry out of the drum, shake it loose, and then select the spinning program again. ◇ Excessive foam may impair the spinning effect. Make sure to use an appropriate amount of low-foaming detergent. ◇ Check whether the spinning rate is set to "0" or "No Spin".
<p>Water leakage</p>	<ul style="list-style-type: none"> ◇ Leak from the water supply hose. Check the connection between the tap and the water supply hose connector for leaks. If there is a leak, wrap sealing tape around the end of the tap or replace the tap. It is recommended to check the connection between the water supply hose connector and the inlet valve for tightness. Tighten the connection to eliminate leaks. ◇ Leak from the drain hose. For top-drain models, the drain hose clips must not be removed as this will result in a continuous water discharge. ◇ Leak from the detergent drawer. The detergent drawer is not closed tightly. Push the handle to close the detergent drawer tightly. ◇ Leak from the door seal. Check the door seal for foreign objects and clean if necessary.
<p>Wrinkled laundry</p>	<ul style="list-style-type: none"> ◇ The laundry is not removed promptly from the drum. After the wash cycle is completed, remove the laundry from the drum promptly. ◇ The appliance is overloaded. The drum should not be full of laundry and the door should be easy to close. ◇ The spinning rate is too high. Set a suitable spinning rate for the type of laundry.

DRY FAULT (FOR TUMBLE DRYER MODELS)

Fault phenomenon	Recommended countermeasures
<p>appliance does not carry out drying process</p>	<ul style="list-style-type: none"> ◇ Check whether the drying program is set up. ◇ Check whether the water tap is unopened. ◇ Check whether the door is properly closed. ◇ Check whether the load is excessive (see PROGRAM TABLE for capacity requirements), and take out part of the laundry to dry again.
<p>Poor drying effect</p>	<ul style="list-style-type: none"> ◇ Check whether the load is excessive. If so, it will cause unsatisfactory drying effect and increased wrinkling. Separate the laundry in the drum for individual drying. ◇ Check if heavier items (e.g., thick cotton) are mixed with lighter ones (e.g., synthetic fabrics). ◇ Dry laundry separately by type.
<p>Excessive drying time</p>	<ul style="list-style-type: none"> ◇ Check whether the load is excessive (see PROGRAM TABLE for capacity requirements), and take out part of the laundry to dry again. ◇ Laundry is not sufficiently spun (see section "Poor spinning effect" for guidance). ◇ A large amount of thicker laundry (e.g., jeans).
<p>Odour during drying</p>	<ul style="list-style-type: none"> ◇ Using detergents or softeners with strong chemical odours may cause odours during drying. ◇ If the appliance is not thoroughly cleaned, residual dirt may produce odours while drying. Clean the appliance regularly (see chapter "MAINTENANCE AND CLEANING") and promptly remove laundry after drying.



FAULT CODES AND TROUBLESHOOTING

When the device does not operate normally and the display shows the following code, it may not be a fault. Please refer to the content in the fault code and take the corresponding measures.

Problem/ Fault	Description	Solution
F01	Water inlet fault	<p>Check the following items:</p> <ol style="list-style-type: none"> 1. Is the faucet turned on? Is the water pressure too low? 2. Is the water inlet hose pinched? 3. Is the water inlet hose filter clogged? 4. Is the water inlet hose frozen? <p>After troubleshooting, press the "Start/Pause" button, then press the "Confirm Start" button within 60 seconds to confirm and continue operation.</p>
F03	Drainage failure	<p>Check the following items:</p> <ol style="list-style-type: none"> 1. Is the drain hose pinched? Is there water flowing in the hose? 2. Is the drain hose filter clogged? 3. Is the drain hose frozen? <p>After troubleshooting, press the "Start/Pause" button, then press the "Confirm Start" button within 60 seconds to confirm and continue operation.</p>
F24	Overflow	<p>Pause the program first, press the "Start/Pause" button, and press the "Confirm Start" button within 60 seconds to confirm and start the program.</p> <p>If the device continues to overflow, please turn off the tap and contact a service technician.</p>
F13	Door locking fault	<p>The appliance door is closed but cannot be locked.</p> <p>First, turn off the machine, then turn it on. Press the "Start/Pause" button, and press the "Confirm Start" button within 60 seconds to confirm and start the program.</p> <p>If the fault still exists, please contact a service technician.</p>
F14	Door unlocking fault	<p>The appliance door is closed but cannot be locked.</p> <p>Turn off the machine first, then turn it on. If the fault still exists, please contact a service technician.</p>
Other	Electronic module malfunction	<p>Turn off the machine, then turn it on;</p> <p>Press the "Start/Pause" button, then press the "Confirm Start" button within 60 seconds to confirm and start the program.</p> <p>If the fault still exists, please contact a service technician.</p>
Unb	Unbalance alarm	<p>To clear the unbalance alarm, follow these steps:</p> <ol style="list-style-type: none"> 1. Entangled laundry If the laundry is tangled together, first turn off the machine, open the door, and loosen clothes. Then, place them back into the drum, close the door, and select the separate "Spin" program to try again. 1. Insufficient laundry weight Turn off the machine, open the door, and add more clothes (or add one or two towels). Close the door, and select the separate "Spin" program to try again.
F15-F18	Drying abnormality (applicable to models with drying function)	<p>Turn the appliance off and then turn it on.</p> <p>If the fault still exists, please contact a service technician.</p>


SERVICING

BEFORE CALLING A SERVICE TECHNICIAN

When you contact the service centre, please specify your appliance model.

The model, code / ID, type and serial number are indicated on the nameplate of the appliance.

 In case of a defect, only use spare parts approved by authorised manufacturers.

 Repairs or warranty claims due to incorrect connections or misuse of the appliance are not covered by the warranty. In such cases, the cost of repair shall be borne by the user.

USAGE RECOMMENDATIONS

When washing colored clothes for the first time, wash them separately by color.

Wash heavily soiled laundry in smaller amounts, with increased powder detergent or a Prewash cycle (if available). Apply a special-purpose stain remover on stubborn stains before the wash. We recommend referring to "stain removal tips".

If you often wash laundry at low temperatures and with liquid detergents, bacteria may develop and cause odour in the appliance. To prevent such odour, we recommend running "Drum Clean" (or other high-temperature programs) from time to time.

We recommend avoiding washing very small amounts of laundry as this will lead to excessive use of energy and poor appliance performance.

Loosen any folded or tangled laundry before putting it into the drum.

Only use detergents for appliance.

If water hardness exceeds 14°dH, water softener should be used. Heater damage resulting from incorrect use of water softeners shall not be covered by the warranty. Check the information on water hardness with your local water supply company or authority.

Use of chlorine-based bleaches is not recommended as they can damage the heater.

If you use a descaling agent, bleach, or dye, only use the kind that is suitable for use in the appliance.

Do not use solvents or similar chemicals (e.g., paint thinner, turpentine, gasoline).

Do not add hardened lumps of powder detergent into the detergent dispenser as this may clog the piping in the appliance.

Powder or liquid detergent should be added according to the manufacturer's instructions, washing temperature, and selected program.

When using concentrated liquid laundry care products, we recommend diluting them with water to prevent clogging the detergent drawer drain.

Liquid detergent is suitable for washing program without a prewash cycle.

Exercise caution to avoid mixing detergent and softener.

At higher spinning rates, there will be less residual moisture in the laundry. As a result, drying in a tumble dryer will be more economical and faster.

STAIN REMOVAL TIPS

Before using special-purpose stain removers, try using the natural methods that do not harm the environment on less stubborn stains. However, timely treatment makes stain removal easier! Remove stains by rinsing with cold (lukewarm) water - but never with hot water!

Stains	Stain removal
Mud	When the stain is dry, first scrape it off the laundry before washing it in the appliance. If the stain is stubborn, soak it with an enzyme-based stain remover before the wash. If the stain is not stubborn, wash the laundry with liquid or powder detergent and water before the wash.
Antiperspirant	Before washing in the appliance, apply liquid detergent onto the laundry. Apply stain removers on any stubborn stains. Alternatively, use oxygen-based bleach for the wash.
Tea	Soak or rinse the laundry in cold water and add stain remover if necessary.
Chocolate	Soak or rinse the laundry with lukewarm soapy water. Then, apply lemon juice and rinse.
Ink	Before washing in the appliance, apply stain remover on the stain. You may also use denatured alcohol. Turn the laundry inside out and place a paper towel under the stain. Use the alcohol on the back side of the stain. At the end of the process, thoroughly rinse the laundry.
Felt tip pens	Dilute some starch in water and apply it to the stain. When it dries, scrape it off with a brush. Then, put the laundry into the appliance to wash.
Baby (urine, mud, food stains)	Before washing in the appliance, soak the stains in lukewarm water for at least half an hour. For easier stain removal, add an enzyme-based stain remover.
Grass	Before washing in the appliance, soak the laundry in an enzyme-based stain remover. Grass stains can also be removed by soaking (for approx. 1 hour) in diluted lemon juice or distilled vinegar.
Egg	Soak the laundry in an enzyme-based stain remover. Soak in cold water for at least 30 minutes, or a few hours if the stains are stubborn. Then, wash in the appliance.
Coffee	Soak the laundry in salt water. If the stain is not fresh, soak it with a mixture of glycerine, ammonia and alcohol.
Shoe polish	Apply cooking oil to the stain and rinse.
Blood	Fresh stain - Rinse the laundry with cool water and wash it in the appliance. Dried stain - Soak the laundry in an enzyme-based stain remover. Then, wash in the appliance. If the stain does not vanish, try to remove it with a bleach suitable for your laundry.

Stains	Stain removal
Glue, chewing gum	Place the laundry in a bag and put it in the freezer until the stain hardens. Then remove it with a blunt knife. Dilute the stain with a prewash stain remover and rinse thoroughly. Finally, wash the laundry in the appliance.
Makeup	Use a stain remover for the prewash, then wash in the appliance.
Butter	Before washing in the appliance, apply stain remover onto the laundry. Then, rinse with hot water (as hot as the fabric allows).
Milk	Soak the laundry in an enzyme-based stain remover. Soak for at least 30 minutes, or a few hours if the stains are stubborn. Then, wash in the appliance.
Fruit juice	Apply a mixture of salt and water on the stain. Leave to take effect for a while, then rinse. You can apply sodium bicarbonate, distilled vinegar or lemon juice on the stain before washing in the appliance. For old stains, use glycerine. After 20 minutes, rinse with cold water. Finally, wash the laundry in the appliance.
Wine	Soak the laundry in cold water for at least 30 minutes. Also, use a stain remover. Then, wash in the appliance.
Wax	Put the laundry into the freezer until the wax hardens. Then, scrape it off. Remove the remaining wax by placing a paper towel onto the stain, and then heat it with an iron until the paper absorbs the wax.
Sweat	Before washing in the appliance, rub liquid detergent thoroughly into the stain.
Chewing gum	Put the laundry into the freezer until the chewing gum hardens. Then, wash in the appliance.

DISPOSAL



Packaging is made of environmentally friendly materials that can be recycled, disposed of, or destroyed without any hazard to the environment. To this end, packaging materials are labelled appropriately.

The symbol on the product or its packaging indicates that the product should not be treated as normal household waste. Take the product to an authorised collection centre for waste electric and electronic equipment processing.

When disposing of the appliance at the end of its useful life, remove all power cords, and destroy the door latch and switch to prevent the door from locking or latching, and to prevent children or small animals from becoming trapped inside and causing a hazard.

This appliance is marked according to the European directive on waste (WEEE).

Correct disposal of the product will help prevent any negative effects on the environment and health of people, which could occur in case of incorrect product removal. For detailed information on removal and processing of the product, please contact the relevant municipal authority in charge of waste management, your household waste disposal service, or the store where you bought the product.

Hisense
life reimagined