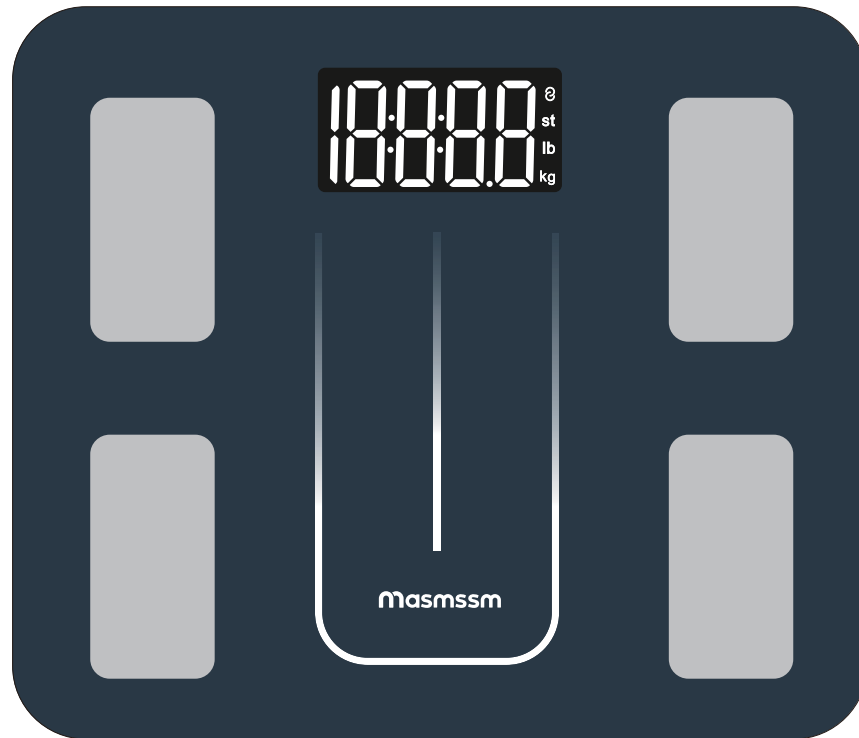


Masmssm

Smart Body Fat Scale

Model: FG450WB-A



Instruction Manual



Read this manual before using and save for future reference

Important Notice

All data measured by this smart body fat scale is for reference only and should not be used for medical diagnosis.

The measured data may be inaccurate if:

- you are a minor
- you are pregnant

Do not use this device if you have implanted a cardiac pacemaker or any other medical device.

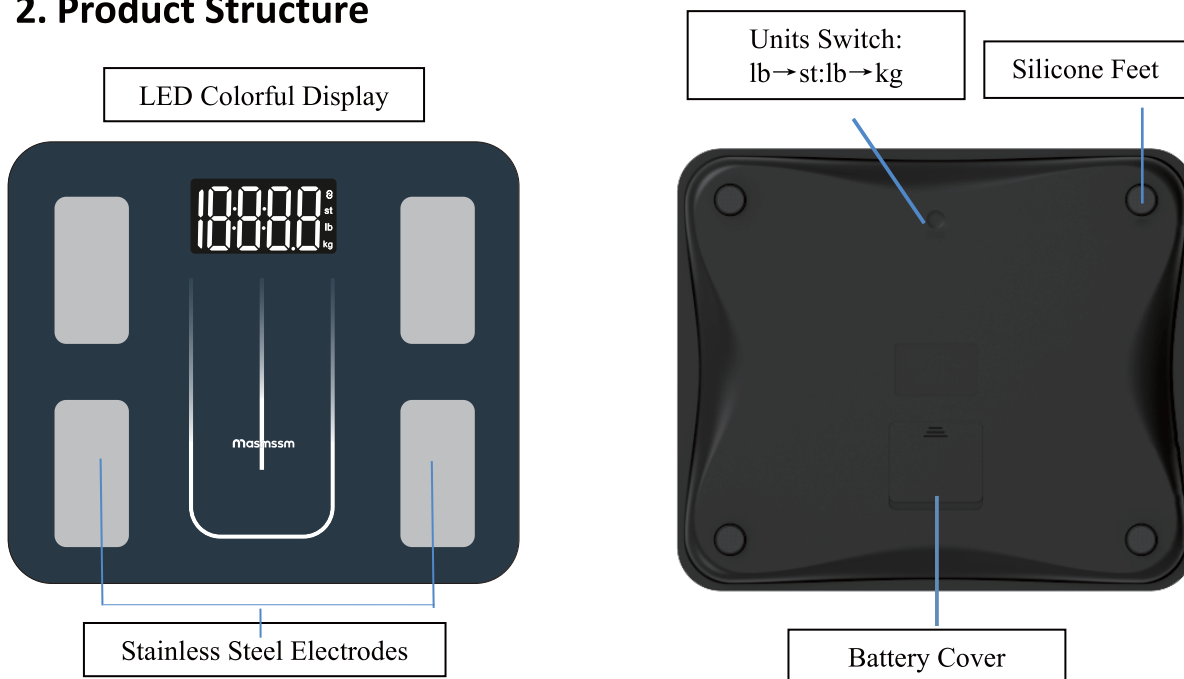
Warnings

- Do not disassemble, squeeze, puncture, or short-circuit the device.
- Do not put the device into water or fire.
- Do not expose the device to an environment at the temperature of higher than 60°C (140°F)
- This device contains batteries and should be placed away from heat sources (heaters, stoves, fireplaces, etc.).
- This device is not water-proof. Do not use it in rainy places or wash it directly with water.
- Do not disassemble or repair this device by yourself. Improper operation during maintenance may cause battery explosion.
- This device is not intended for people (including children) who are weak, slow to respond or have mental disorders, unless they are supervised or instructed by the person responsible for their safety.
- Keep the device out of reach of children. Supervise children not to play with the device.

Maintenance

- Carefully wipe the device with a clean, soft cloth.
- Do not use any detergent.

2. Product Structure



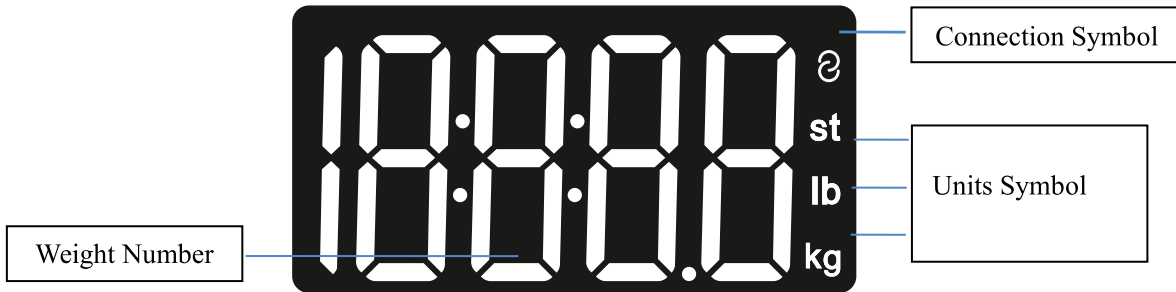
Note:

-After being placed on a hard and flat ground, the screen will turn on when it senses a weight of more than 5kg.

-If this device contains 4pcs x AAA batteries, please load the battery at the positive and negative electrode instructions.

-If the scale has a built-in 4pcs x AAA batteries in the factory, please remove the insulation strip.

3. LED display



LED Screen Display Sequence

Press the scale surface firmly or step on it to turn it on until the LED displays "HI". Once stabilized, reset to 0.0. Step onto the scale. Once the weight stabilizes, the reading will flash three times, displaying the weight value for 15 seconds before turning off.



If human impedance is detected and user information is recognized, and the weight is stable, the impedance measurement mode will be entered.



After the impedance measurement is completed, the human impedance and weight are uploaded to the app, and users can view other body information on the app.

Note: Do not step off the scale when the screen is running, which indicates that the device is measuring. Please wait until the measurement is complete. Then the screen will display results.

Above test results, including body fat rate, BMI, muscle, body water rate and bone, which are shown for 3 seconds each data.

4. SPECIFICATION

Weight unit: lb/st/kg (switch the units via APP setting or via unit button at scale base)

Weight limit: 5kg-250kg/11lb-550lb

Power Supply: 4pcs x AAA

Account number: Each account can add 24 persons

Operating temperature: 10-40°C

Operation humidity: 20%-90%

5. Install Fitdays App

1. Search “Fitdays” in App Store or Google Play or scan the QR Code below:



2. Download and install the App on your device.

3. The App icon will appear on your phone or tablet after the installation is completed.

Support Devices:

iOS 8.0 or higher

Android 6.0 or higher

6. Special Notices:

1. For the first use, the device must be connected to the internet to access all features beyond weight and BMI.

-During use, please keep the App on the home page and maintain the measurement posture for about 30 seconds.

-After finishing the measurement, you can check 6 core data on the scale LED display.

-You can also check more details on the App page.

2. For the second use, offline measurement supported.

(No need to open App for every measurement)

7. How to use Fitdays APP

1. Step on the scale to turn it on.

2. Place the scale on the hard, flat ground. Turn on Bluetooth on your smart phone or tablet.

3. Register your own ID by email or social media account for Fitdays App.



15:14

Privacy Policy

Fitdays ("Fitdays," "we," "us," or "our") respects your privacy. This Privacy Policy governs how we handle the personal data ("personal information," "your data," "your information," or information "from" or "about" you) that we collect online (e.g., through our website and office (e.g., through customer support channels)) (collectively, the "Services"). It explains the types of personal data we collect and process, how we may use and share that data, and the choices that are available to you with respect to our handling of your data. By accessing the Services on any computer, mobile phone, tablet, or otherwise, you agree to the terms of this Privacy Policy. If you do not agree to the Privacy Policy, please do not use the Services.

We may modify this Privacy Policy at any time, and will post the current version on this website with the date it was last revised. If we make any material changes, we will provide you with additional notice. We encourage you to periodically review our Privacy Policy to stay informed about how we are using the data we collect. You will be deemed to have accepted the changes in any revised Privacy Policy by your continued use of the Services after the date such revised Privacy Policy is posted.

1. How to collect data?

- The information you provide us. In the process of using this product, according to the principle of BIA bioelectrical resistance measurement, through the collection of the body parameters, body fat rate/muscle volume/metabolism and other measurement parameters will be obtained through complex formulas, user's height/gender/age/weight will be calculated as one of the physical parameters. Therefore, when you registered the App account, the birthday/height, gender and other body related data you submitted will be applied to the calculation of body fat rate/muscle volume/metabolic rate etc. We reserve the right to amend this policy for future.

15:14

Email

Please enter your Email

Password

Enter password

8-16 digits or letters or symbols

Remember password

I have read and agree to the Privacy Policy

Login

Other ways to login

f a

Verification code login

Register

I forgot my password.

4. Add personal data and confirm OK.

Note: Enter the wrong gender, age, height into may result in measurement being inaccurate.

15:15

personal information

Personal information is only processed as health data. Fitdays will keep your information confidential.

Male Female

Nickname 83445

Birthday Jan.01,1995

Height 165cm

Target weight 56.1kg

Mode selection Standard Mode

For the accuracy of the measurement results, it is recommended that you fill in the real body data

Confirm

15:16

personal information

Personal information is only processed as health data. Fitdays will keep your information confidential.

Male Female

Nickname Sally

Birthday Aug.28,1998

Height 167cm

Target weight 50.5 kg

Mode selection Standard Mode

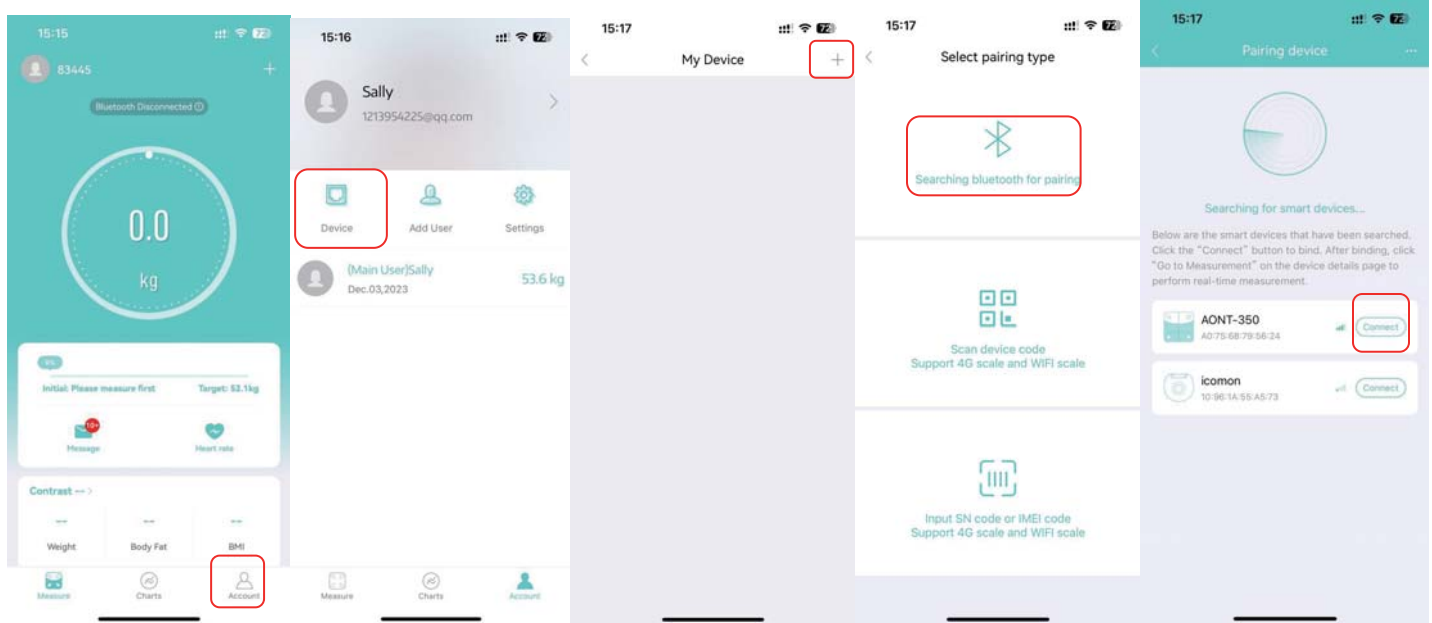
For the accuracy of the measurement results, it is recommended that you fill in the real body data

Confirm



5. Pair the scale through Bluetooth. Click Account → Device → + → Searching Bluetooth for pairing to find the scale (Keep scale on) and now your phone is connected with the scale; After connection, connected will be indicated on Main page, top position; If disconnected be shown, means failure for pairing. Please repeat above steps.





6. Step on the scale to activate the display. Wait until the display shows “0.00” (kg/lb/st).

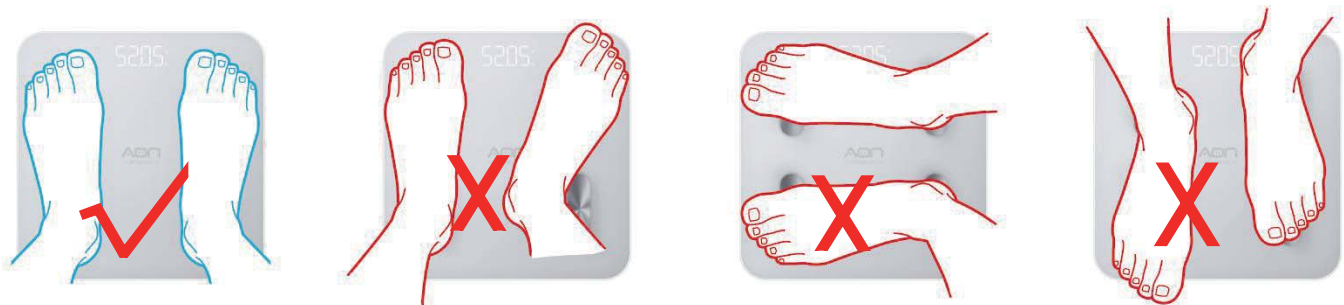
Keep Fitdays App on main page;

Then Bluetooth connection icon will be shown on.

Connected indication will be shown on main page at the same time.

7. Step onto the scale with bare feet;

Make sure stand on each two electrodes metal plate with bare feet as below indication photos;



8. The number on the display is flashing when the scale is weighing and analyzing.

Please stand still and keep same posture for about 30S;

App will show measure schedule during body fat measurement.

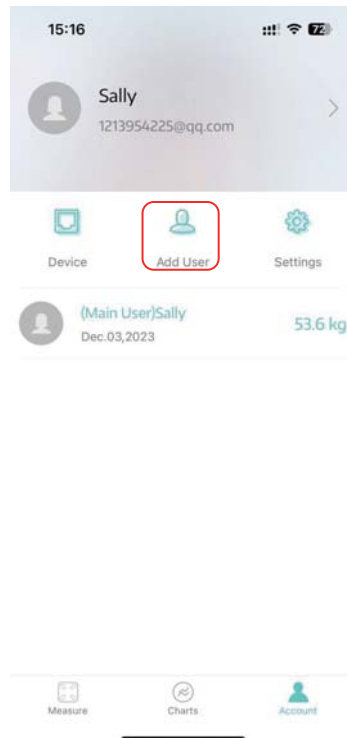
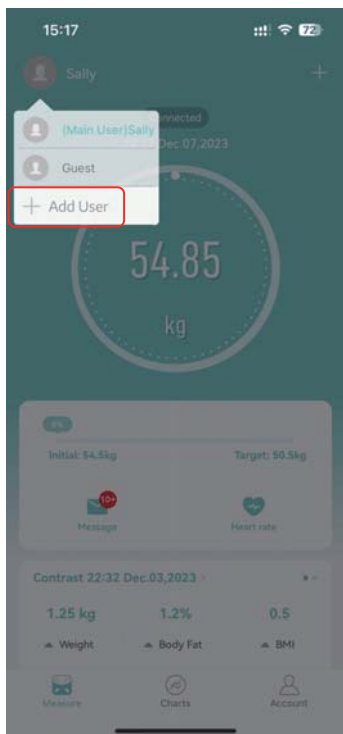
After measurement finished, your can check more data from App.

9. You can click “More Data” to read more data.

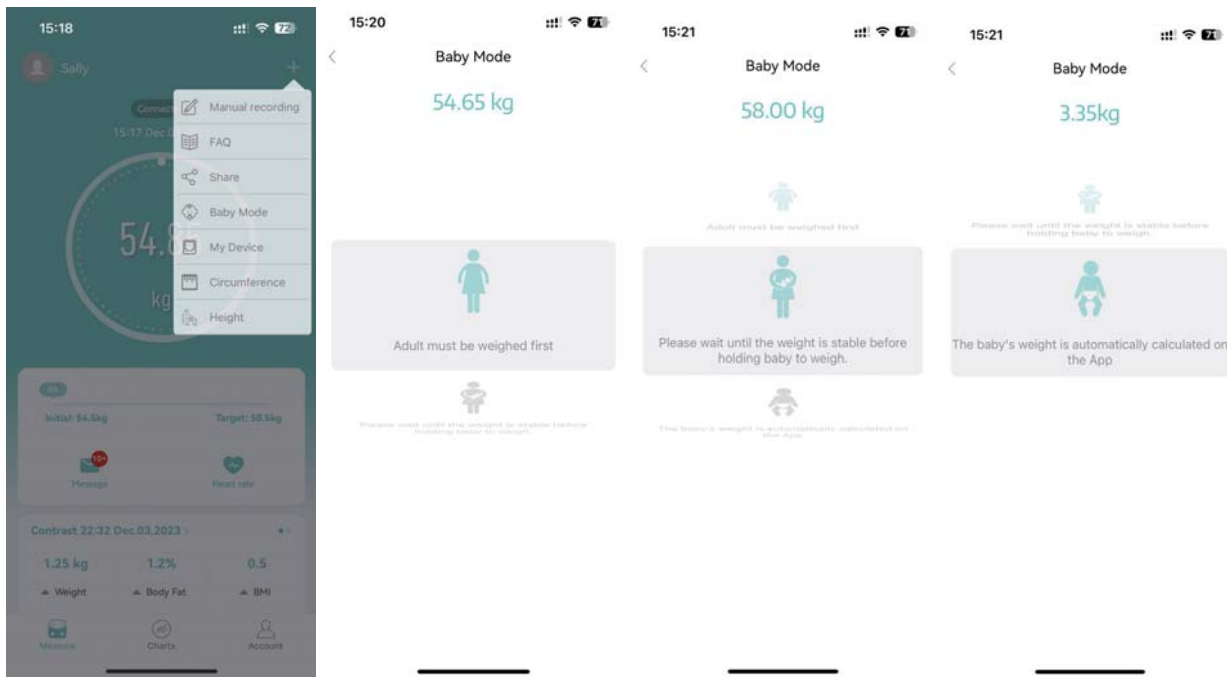
10. You can find the analyzing report on Body Weight, BMI, BFR, Muscle, Bone Mass etc. When you click “Record”, you can see your long-term track chart form.



11. Add, switch user by click ->Add User, or click Account--> Add User, then add personal data. The Smart Scale can recognize which user is step on it and remind user to switch the correct user. Each account can support 24 users;



12. Weighing baby: click + -->Baby Mode. Step on the scale by you own, after scale gets your weight, and then hold the baby to get the weight of baby.



8. Battery and Fault Reminders



Low battery
(Please change new batteries)



Overload
(exceeding the maximum weight)



Unstable weighting
(please step on the scale again)

9. TROUBLE SHOOTING GUIDE

1. Bluetooth not connected

- The scale and smart phone must be both have Bluetooth on.
- Check the iOS version of smart phone, it must be iOS 8.0 or higher/Android 6.0 higher.
- Click Account → Device → + → Searching Bluetooth for pairing to find the scale (Keep scale on status) and now your phone is connected with the scale.

2. No body fat data measured when weighing

- User must be bare foot to measure the body fat.
- Pay close attention to foot placement over electrode plates (see figure on item 7, page 5).
- Make sure your foot and the scale are both dry.
- Scale not finishing weighing when the number display is flashing (Keep standing on the scale around 30 second until the number on the display stops flashing).
- Bluetooth is not turned on.
- Bluetooth is paired with a difference scale.

3. The scale is producing inconsistent weight.

Check whether the scale is on a hard, flat surface.

Check each sensor foot on the back to make sure nothing is stuck to the bottom of it.

Remove the batteries to restart the scale.

4. The App is display the incorrect fat-muscle ratio

The body parameter setting is incorrect, check to make sure you entered the correct gender, height, and age.

5. How do I re-calibrate the scale after moving it or change the batteries?

Step on the scale to turn it on. Let it automatically drop to 0.0kg to calibrate.

6. The scale does not turn on

Remove the batteries and put it back. Make sure to insert the batteries in the correct direction.

10. Customer Support & Warranty

If you have any questions about operation, presets, or product performance, please do not hesitate to contact our customer support team.

Email: masmssm@outlook.com

To help us assist you faster, please include your Amazon Order ID and a brief description of the issue in your message.

We are committed to providing professional and timely after-sales support.

FCC Statement

NOTE: This equipment has been tested and found to comply with the limits for a Class B digital device, pursuant to part 15 of the FCC Rules. These limits are designed to provide reasonable protection against harmful interference in a residential installation. This equipment generates, uses and can radiate radio frequency energy and, if not installed and used in accordance with the instructions, may cause harmful interference to radio communications. However, there is no guarantee that interference will not occur in a particular installation. If this equipment does cause harmful interference to radio or television reception, which can be determined by turning the equipment off and on, the user is encouraged to try to correct the interference by one or more of the following measures:

- Reorient or relocate the receiving antenna.
- Increase the separation between the equipment and receiver.
- Connect the equipment into an outlet on a circuit different from that to which the receiver is connected.
- Consult the dealer or an experienced radio/TV technician for help

Changes or modifications not expressly approved by the party responsible for compliance could void the user's authority to operate the equipment.

This device complies with Part 15 of the FCC Rules. Operation is subject to the following two conditions:

(1) this device may not cause harmful interference, and (2) this device must accept any interference received, including interference that may cause undesired operation.

FCC RF Exposure Statement:

This equipment complies with FCC radiation exposure limits set forth for an uncontrolled environment. This equipment can be used in portable exposure conditions.

FCC ID: 2AP3Q-FG450WB-A