

SMART WI-FI
SURGE
PROTECTOR
START GUIDE

geeni™

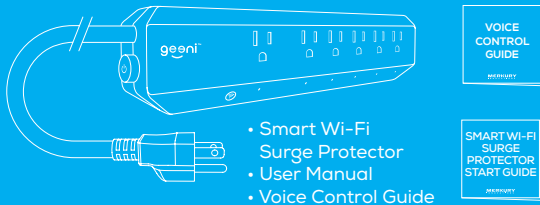
Thank you for purchasing your MERKURY smart home product. Get started using your new devices by downloading Geeni, one convenient app that manages everything straight from your phone or tablet. Easily connect to your home Wi-Fi and control multiple devices from the touch of your fingertips.

Contents

Download & Register	2-4
Plug In	5
Connect (Easy Mode)	6-7
Connect (AP Mode)	8-9
Questions, Troubleshooting, Notices	10-13

CAUTION: Not for use with ground-fault circuit-interrupter receptacles or receptacles with indicator lights or control. To reduce the risk of fire or electric shock, do not use this device with a receptacle in which the slot openings do not align with the blades. To reduce the risk of electric shock, this product has a third (grounding) pin and will only fit into a 3-prong grounded outlet. Do not use if the plug does not fit.
CAUTION: Suitable for indoor use only.
DO NOT EXCEED RATED CAPACITY.

What's in the Box



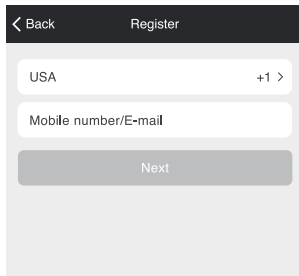
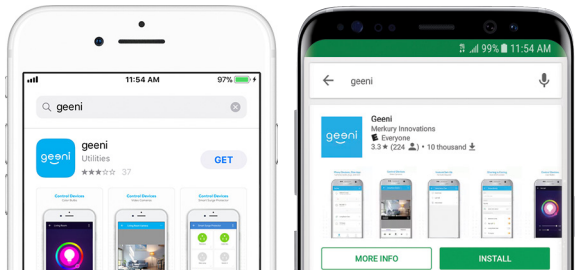
- Smart Wi-Fi Surge Protector
- User Manual
- Voice Control Guide

Get Ready

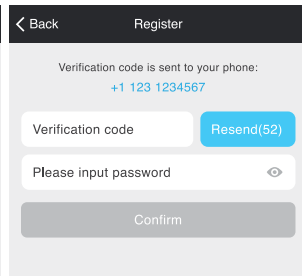
- Know your Wi-Fi network and password
- Make sure your mobile device is running iOS® 9 or higher or Android™ 5.0 x or higher
- Make sure you're connecting to a 2.4GHz Wi-Fi network **(Geeni can't connect to 5GHz networks)**

1 Download the Geeni app from App Store or Google Play.

2 Register an account on your Geeni app.



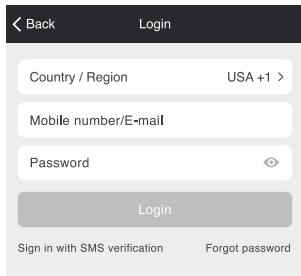
STEP 1.
Enter your mobile phone number
or email address.



STEP 2.
Enter the verification code
and create a password.

2

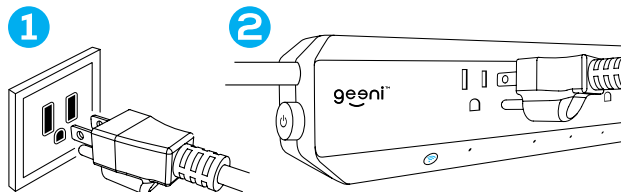
Register an account on your Geeni app.



STEP 3.
Login to the App.

3

Plug In



STEP 1.
Plug the Geeni device into the wall.
Make sure the indicator light on the device is flashing rapidly blue, indicating the device is ready to connect.



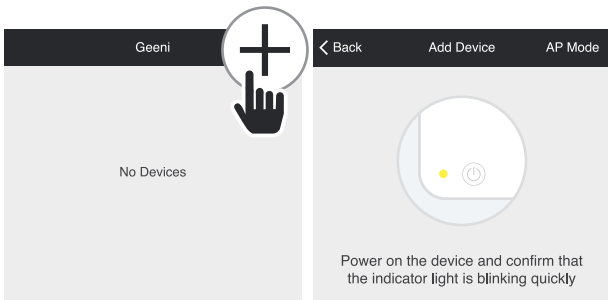
Solid: Connected
Blinking fast: Easy Mode
Blinking slow: AP Mode

How do I reset the device and what does the blinking light mean?

- Reset the plug by pressing and holding the button for 3 seconds until the indicator light is flashing rapidly.
- Reset one time (press and hold) to reach Easy mode (Fast blinking blue, 2x per second)
 - Reset again (press and hold) to reach AP Mode (Slow blinking blue, every 3 seconds)

4

Add device. Method 1: Easy Mode



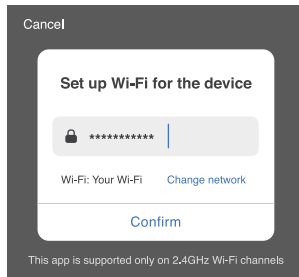
STEP 2.

In the Geeni app, on the top corner of the Devices screen, click (+).

Choose "Smart Power".

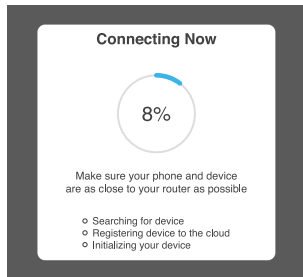
STEP 3.

Make sure the indicator light on the device is flashing rapidly blue, indicating the device is ready to connect using Easy Mode. If not, press and hold the Button for 3 seconds until the indicator light is flashing rapidly, then press "Next Step".



STEP 4.

Enter your Wi-Fi network and password.



STEP 5.

The Geeni app will try to connect your device.

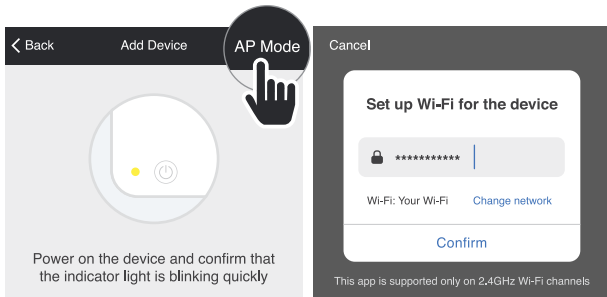
*If the connection fails, try to connect using AP Mode.
Geeni can't connect to 5GHz networks

5

Add device. Method 2: Backup AP Mode

STEP 1.

Make sure the device is in AP Mode, blinking slowly
(see reset instructions on p. 5)

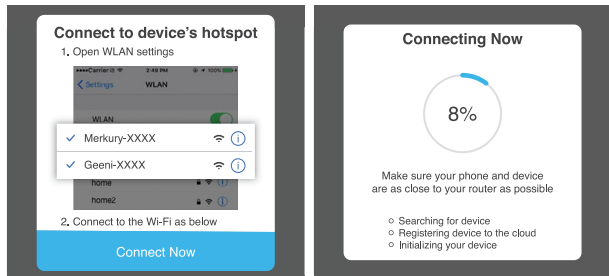


STEP 2.

In the Geeni app, on the top corner of the Devices screen, click (+).
Choose "Smart Power".
Choose "AP Mode" in the top corner.

STEP 3.

Click Next and enter your Wi-Fi details.



STEP 4.

Follow the instructions to choose the device from your Wi-Fi list.

STEP 5.

The device will connect.

Frequently Asked Questions

1. Can I share with family and friends?

Yes, you can share your plugs with family and friends who will have access to control your bulbs, cameras, and other Geeni devices. In the Geeni app, press the Profile button and click on the "Device Sharing" button, and you will be able to give or revoke sharing permissions.

In order to share, the other user should already have downloaded the Geeni app and registered a new account.

2. Can I group multiple Geeni devices together?

Yes, you can group multiple devices of the same type together, by room, location, or however else you want. The same devices can be in multiple groups. For example, create a group for "Outdoor" and another group for "Entire House", and your Holiday lights can be included in both groups.

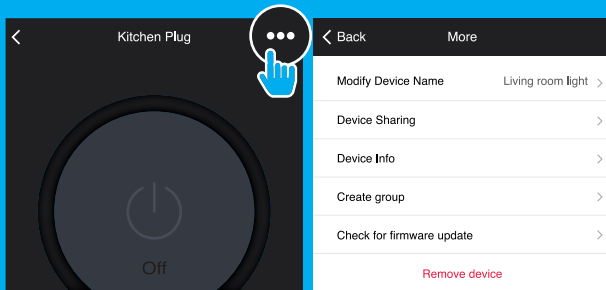
From your main device list, click on one of the devices you want to group, press the "... " button on the top right for advanced settings, and click Create Group. You'll then be able to choose which devices you'd like to group together and will be able to rename them.

3. How Many Devices Can I Control?

Geeni's app can control an unlimited amount of devices in an unlimited amount of locations. Your router may have a limit of how many devices can be connected to one router.

4. My Geeni device has a funny name. How do I rename it?

From your main device list, click on one of the devices you want to rename, press the "... " button on the top right for advanced settings, and click Modify Device Name (or Modify Group Name, if applicable). You'll then be able to choose a more familiar name. To rename a particular outlet, click the small pencil icon next to its name.



5. The device appears offline or unreachable, what should I do?

Make sure your Wi-Fi router is online and in range.

Make sure you have the latest Geeni functionality by clicking "Check for firmware update" in your device settings.

6. What's the Wireless Range?

The range of your home Wi-Fi is heavily dependent on your home router and the conditions of the room. Check with your router specifications for exact range data.

7. If my Wi-Fi/Internet goes down, will Geeni still work?

Geeni products need to be connected to Wi-Fi in order to use them remotely.



Troubleshooting

Cannot connect to your Wi-Fi network.

Make sure you entered the correct Wi-Fi password during the Wi-Fi setup. Check whether there are any Internet connection problems. If the Wi-Fi signal is too weak, reset your Wi-Fi router and try again.

Reset the device

To Reset plugs, press and hold the power button for 3 seconds.

- Reset one time (press and hold) to reach Easy mode (Fast blinking blue)
- Reset two times (press and hold) to reach AP Mode (Slow blinking blue)

System Requirements

- Mobile device running iOS® 9 or higher or Android™ 5.0 x or higher
- Existing Wi-Fi Network

Technical Specifications

- Input Voltage: 125V
- Input Frequency: 60Hz
- Max. Load Current: 10A
- Surge Protection: 460J
- Max. Power: 1250W
- Wi-Fi: IEEE 802.11 b/g/n, 2.4GHz (not compatible with 5GHz Wi-Fi networks)

FCC Notice:

This device complies with Part 15 of the FCC Rules. Operation is subject to the two following conditions:

1. This device may not cause harmful interference.
2. This device must accept any interference received, including interference that may cause undesired operation.

Note: This equipment has been tested and found to comply with the limits for a Class B digital device, pursuant to Part 15 of the FCC Rules. These limits are designed to provide reasonable protection against harmful interference in a residential installation.

Important Information:

Before installing, read and follow all precautions, including the following:

CAUTION: Not for use with ground-fault circuit-interrupter receptacles or receptacles with indicator lights or control. To reduce the risk of fire or electric shock, do not use this device with a receptacle in which the slot openings do not align with the blades.

To reduce the risk of electric shock, this product has a third (grounding) pin and will only fit into a 3-prong grounded outlet. Do not use if the plug does not fit.

CAUTION: Suitable for indoor use only.

DO NOT EXCEED RATED CAPACITY.

Support:

If you encounter any issues, please contact us at support@mygeeni.com for help. To explore our full selection of products, visit us at: www.mygeeni.com

© 2019 Mercury Innovations • 45 Broadway 3rd FL, New York NY 10006. The illustrated product and specifications may differ slightly from those supplied. Geeni is a trademark of Mercury Innovations LLC. iPhone, Apple and the Apple logo are trademarks of Apple Inc., registered in the U.S. and other countries. App Store is a service mark of Apple Inc. Android, Google Assistant, Google Play, and the Google Play logo are trademarks of Google Inc. Google is a trademark of Google LLC. iOS is a registered trademark of Cisco in the U.S. and other countries and is used under license. Amazon, Alexa and all related logos are trademarks of Amazon.com, Inc. or its affiliates. Cortana is a registered trademark of Microsoft Corporation. All other trademarks and trade names are those of their respective owners.

Made in China

Can't connect? Need help?



DO NOT RETURN THIS
PRODUCT TO THE STORE

Geeni support:
support@mygeeni.com
or tap 'Support' for help in the Geeni app.