

Quick Installation Guide

5MP Security Pan/Tilt Camera
 3MP Security Pan/Tilt Camera
 CP7/CP3 Pro

Video and More Info



Scan the QR code for installation videos, technical specifications, user guides, Symbols on Products and Materials, and more information. Multiple languages are available. You can see the product name and model on the product label. The label can be found on the device body.
<https://www.tendacn.com/service/default.html>

CP7 is used for illustrations here unless otherwise specified. The actual product prevails.



RECYCLING

This product bears the selective sorting symbol for Waste Electrical and Electronic Equipment (WEEE). This means that this product must be handled pursuant to European directive 2012/19/EU in order to be recycled or dismantled to minimize its impact on the environment. User has the choice to give his product to a competent recycling organization or to the retailer when he buys a new electrical or electronic equipment.



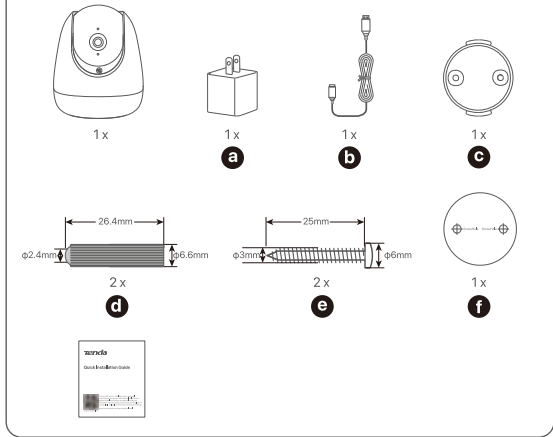
Technical Support

Shenzhen Tenda Technology Co., Ltd.
 Floor 6-8, Tower E3, No.1001, Zhongshanyuan Road, Nanshan District, Shenzhen, China.
 518052
 Website: www.tendacn.com
 E-mail: tendasecurity@tenda.cn
support.usa@tenda.cn (North America)
support.uk@tenda.cn (United Kingdom)

Copyright © 2025 Shenzhen Tenda Technology Co., Ltd. All rights reserved.

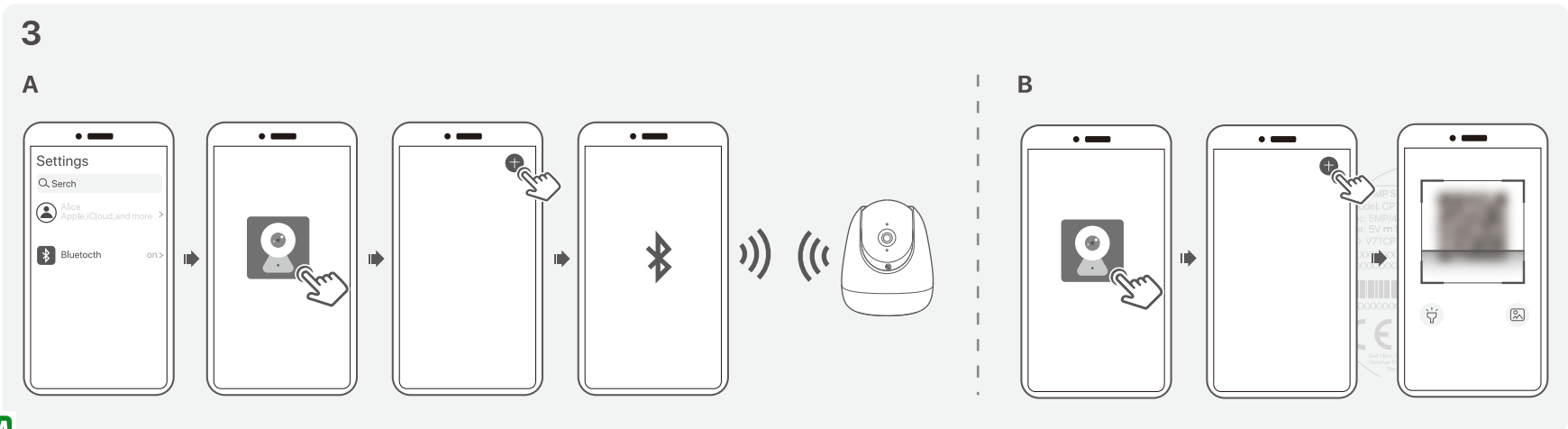
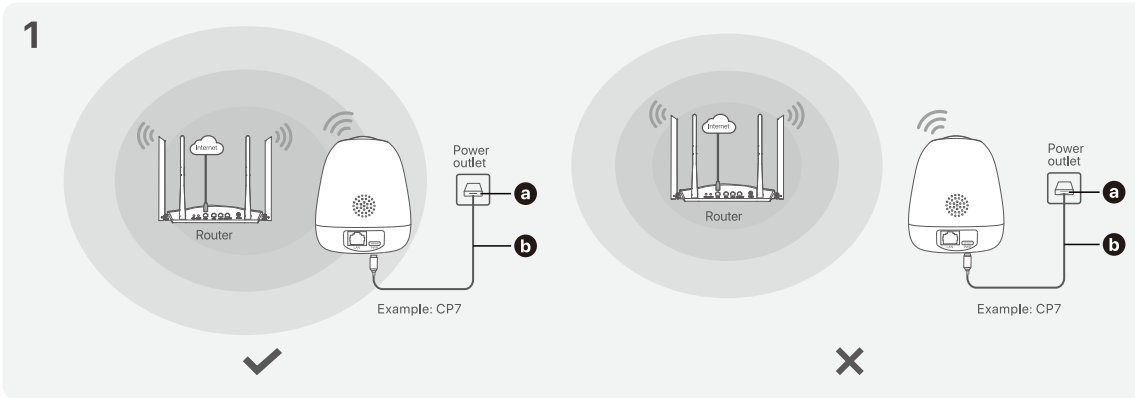
Tenda is a registered trademark legally held by Shenzhen Tenda Technology Co., Ltd. Other brand and product names mentioned herein are trademarks or registered trademarks of their respective holders. Specifications are subject to change without notice.

V1.0 Keep for future reference.



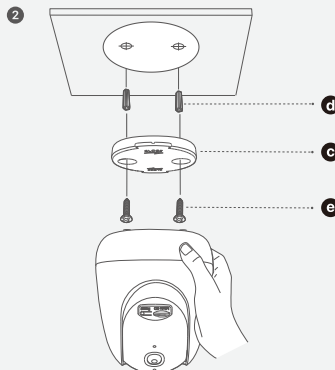
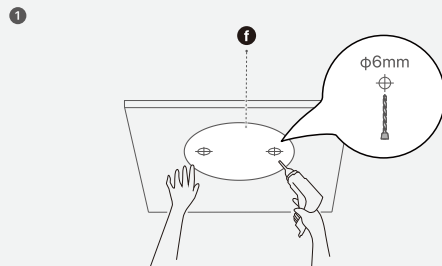
Tips:

- Before adding the camera, make sure the router is successfully connected to the internet and that internet access filtering and authentication functions are disabled.
- When adding the camera, ensure your phone is connected to the router's 2.4 GHz Wi-Fi.



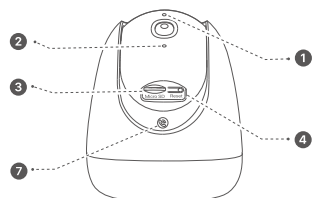


- Tips:**
- Make sure the ceiling is strong enough to withstand three times the weight of the camera.
 - Install the camera where the router has good Wi-Fi signal.

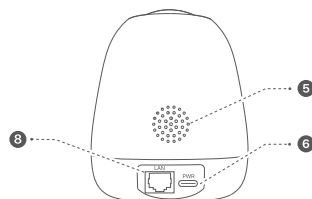


Appearance

*The appearance of different camera models may be different. The actual product prevails.



Example: CP7



Example: CP7

1	Indicator Solid red: Initializing and starting. Blinking red slowly: Disconnected from the network. Blinking red quickly: Connecting to the network. Solid blue: Connected to the network. Blinking blue slowly: Upgrading. Blinking blue quickly: Waiting to connect to the network.
2	Microphone
3	Micro SD card slot Insert the Micro SD card to store the monitoring videos.
4	Reset button Reset method: Hold down the reset button for about 5 seconds and release it after the indicator blinks blue quickly or you hear a prompt tone. The camera is reset to factory settings successfully.
5	Speaker
6	Type C power jack Used to connect to the included power adapter and power cord.
7	One-touch call button Used to make a video call to the app remotely.
8	Ethernet port(if any) 10/100 Mbps auto-negotiation Ethernet port. Used for connecting such devices as the router and switch.

Safety Precautions

Before operating, read and follow these precautions to prevent accidents.

- For desktop mounting, the camera must be horizontally mounted for safe use.
- For ceiling mounting, the camera is suitable for mounting at heights >2m.
- Do not use the device in a place where wireless devices are not allowed.
- Use the included power adapter and power cord.
- The mains plug is used as the disconnect device, and shall remain readily operable.
- The power socket shall be installed near the device and easily accessible.
- Operating temperature: -10°C ~ +45°C (14°F to 113°F).
- Keep the device away from water, fire, water, high electric field, high magnetic field, and inflammable and explosive items.
- Keep this device out of reach of children to prevent children from using it as a toy and causing personal injury.
- Unplug this device and disconnect all cables during lightning storms or when the device is unused for long periods.
- Do not use the power adapter if its plug or cord is damaged.
- If such phenomena as smoke, abnormal sound or smell appear when you use the device, immediately stop using it and disconnect its power supply, unplug all connected cables, and contact the after-sales service personnel.
- Disassembling or modifying the device or its accessories without authorization voids the warranty, and might cause safety hazards.
- Refer all servicing to qualified service personnel.
- Disconnect the power source during servicing.

For the latest safety precautions, see **Safety and Regulatory Information** on www.tendacn.com.



CE Mark Warning

This is a Class B product. In a domestic environment, this product may cause radio interference, in which case the user may be required to take adequate measures.

This equipment should be installed and operated with a minimum distance 20cm between the device and your body.
 E: (1) The manufacturer is not responsible for any radio or TV interference caused by unauthorized modifications to this equipment. (2) To avoid unnecessary radiation interference, it is recommended to use a shielded RJ45 cable.

Declaration of Conformity

Hereby, SHENZHEN TENDA TECHNOLOGY CO., LTD. declares that the device (Camera) is in compliance with Directive 2014/53/EU.

The full text of the EU Declaration of Conformity is available at the following internet address:

<https://www.tendacn.com/download/list-9.html>

Operating Frequency/Max Output Power

English: Operating Frequency/Max Output Power Deutsch: Betriebsfrequenz/Max. Ausgangsleistung Italiano: Frequenza operativa/Potenza di uscita massima Español: Frecuencia operativa/Potencia de salida máxima Português: Frequência de Funcionamento/Potência Máxima de Saída Français: Fréquence de fonctionnement/Puissance de sortie maximale Nederlands: Bedrijfsfrequentie/Maximaal uitgangsvermogen Svenska: Driftfrekvens/Max. Uteffekt Dansk: Driftsfrekvens/Maks. Udgangs effekt Suomi: Toimintataajuus/maksimilähtöteho Magyar: Működési frekvencia/Maximális kimeneti teljesítmény Polski: Częstotliwość pracy/Maksymalna moc wyjściowa Čeština: Provozní frekvence/maximální výstupní výkon Ελληνικά: Συχνότητα λειτουργίας/Μέγιστη ισχύς Εξόδου Română: Frecvența de funcționare/Putea maximă de ieșire Български: Работна честота/максимална изходна мощност Eesti: Tooteajuus/Max väljundvõimsus Slovensčina: Delovna frekvencia/Največja izhodna moč Slovenčina: Prevaldzkova frekvencia/Maximálny výstupný výkon Hrvatski: Radna frekvencija/Maksimalna izlazna snaga Latviešu: Operācijašāks frekvencs/Maksimālā jauda Lietuvių: Darbinis dažnis/maksimali išėjimo galia Türkçe: Çalışma Frekansları/Maks. Çıkış Gücü Українська: Робоча частота/максимальна вихідна потужність عربي: تردد التشغيل / الحد الأقصى لطاقة الإخراج	2412MHz~2472MHz/20dBm
---	-----------------------

Manage the Camera

After the camera works properly, you can manage the camera through TDSEE App or web UI. (Scan the QR code of Video and More Info in this guide to obtain the related user guide.)

To log in to the web UI:

- After the camera connects to the router via Wi-Fi, connect your computer to the router with an Ethernet cable or via Wi-Fi.
- Set the computer's IP address to the same subnet as the camera (but not identical). Usually, the computer is set to **Obtain an IP address automatically**, which allows it to acquire an IP address in the same subnet without manual configuration. The camera's default login IP address is **192.168.1.203**, and the Obtain an IP address automatically function is enabled by default. After adding the camera to the TDSEE App, tap the settings (⊙) icon > **Device Info** > **IP Address** to view its IP. You can also download the **Tenda security search tool** from www.tendacn.com to find it.
- Start a browser and enter the camera's IP address in the address bar to access the login page. The default user name and password are **admin** and **admin123456**.

Tips:

For initial setup or after a reset, set new login password for privacy and security (The longer the password, the stronger the protection). The character limit and composition rules for passwords are subject to software user interface prompts.

FAQ

Q1. What should I do if I failed to add the camera to the TDSEE App?

- Ensure that the router is connected to the internet.
- The camera supports 2.4 GHz Wi-Fi only. Connect your phone to a 2.4 GHz Wi-Fi when adding the camera.
- Do not hide the router's Wi-Fi when adding the camera (You may hide it after the camera is added).
- Before adding the camera, make sure the indicator is **blinking blue quickly**. If not, reset the camera and try again.

Q2. What should I do when the video preview is not smooth?

- Ensure that the router's Wi-Fi is smooth.
- Take the router closer to the camera.
- When previewing video over cellular data, ensure the smartphone has a stable internet connection.
- Video preview supports **Fluent** and **HD**. Adjust the video quality based on network conditions: open the **TDSEE** App, select the camera, and tap the image-quality switch in the upper-right corner of the live view.

Q3. How to store the videos?

Method 1: Install a Micro SD card in the camera. Recording modes include Alarm Recording and AI-Day Recording (default: Alarm Recording). You can change the mode as required. When installing a Micro SD card for the first time, format it as prompted by the app.

Method 2: Subscribe to the Cloud Storage Service in TDSEE App. Open the app, select the camera on the homepage, and tap Cloud Storage in the lower-left corner. After first activation, you get 28 days of free cloud storage with 7-day loop detection recording.

Method 3: Connect the camera to an NVR for recording. The camera supports ONVIF and can be added to the NVR via a wired or wireless connection. The default username and password are admin and admin123456. Refer to the NVR manufacturer's instructions for configuration.

For more FAQs, please scan the QR code in the **Video and More Info** section.



FCC Statement

This equipment has been tested and found to comply with the limits for a Class B digital device, pursuant to Part 15 of the FCC Rules. These limits are designed to provide reasonable protection against harmful interference in a residential installation. This equipment generates, uses and can radiate radio frequency energy and, if not installed and used in accordance with the instructions, may cause harmful interference to radio communications. However, there is no guarantee that interference will not occur in a particular installation. If this equipment does cause harmful interference to radio or television reception, which can be determined by turning the equipment off and on, the user is encouraged to try to correct the interference by one or more of the following measures:

- Reorient or relocate the receiving antenna.
- Increase the separation between the equipment and receiver.
- Connect the equipment into an outlet on a circuit different from that to which the receiver is connected.
- Consult the dealer or an experienced radio/TV technician for help.

Operation is subject to the following two conditions: (1) this device may not cause harmful interference, and (2) this device must accept any interference received, including interference that may cause undesired operation.

Radiation Exposure Statement

This device complies with FCC radiation exposure limits set forth for an uncontrolled environment and it also complies with Part 15 of the FCC RF Rules.

This equipment should be installed and operated with minimum distance 20cm between the device and your body.

This transmitter must not be co-located or operating in conjunction with any other antenna or transmitter.

Caution:

Any changes or modifications not expressly approved by the party responsible for compliance could void the user's authority to operate this equipment.

Operating frequency: 2412-2462MHz

The device is for indoor usage only.

NOTE: (1) The manufacturer is not responsible for any radio or TV interference caused by unauthorized modifications to this equipment. (2) To avoid unnecessary radiation interference, it is recommended to use a shielded RJ45 cable.