



USER MANUAL

Cordless Wet Dry Vacuum Cleaner

Model: AC1 TriFlex

Contents

EN

| | |
|------------------------------------|----|
| Important Safety Instructions | 01 |
| Instructions For Use | 03 |
| How to Use | 04 |
| Maintenance and Cleaning | 11 |
| Troubleshooting and Solutions... | 13 |
| Product Specification | 15 |

DE

| | |
|------------------------------|----|
| Vorsichtsmaßnahmen | 16 |
| Übersicht | 17 |
| Montage | 18 |
| Wartung | 25 |
| Störungsbehebung | 27 |
| Produktspezifikationen | 29 |

FR

| | |
|---------------------------------|----|
| Instructions De Sécurité | 30 |
| Description Du Produit | 31 |
| Utilisation De L'appareil | 32 |
| Entretien | 39 |
| Dépannage | 41 |
| Spécifications Du Produit | 43 |

IT

| | |
|---------------------------------|----|
| Misure di precauzione | 44 |
| Informazioni sul prodotto | 45 |
| Utilizzo del prodotto | 46 |
| Manutenzione del prodotto | 49 |
| Risoluzione dei problemi | 55 |
| Specifiche del prodotto | 57 |

ES

| | |
|---------------------------------------|----|
| Precauciones | 58 |
| Descripción general del Producto | 59 |
| Uso del Producto | 60 |
| Mantenimiento del Producto | 67 |
| Resolución de Problemas | 69 |
| Especificaciones del Producto | 71 |

PL

| | |
|--------------------------------------|----|
| Ważne instrukcje bezpieczeństwa | 72 |
| Instrukcje użytkowania | 73 |
| Zastosowanie produktu | 78 |
| Konserwacja i czyszczenie | 81 |
| Rozwiązywanie problemów | 84 |
| Specyfikacja produktu | 85 |

IMPORTANT SAFETY INSTRUCTIONS

Please read the following safety precautions carefully before using this appliance:

General Usage

- Use the appliance only indoors on non-carpeted floors such as vinyl, tile, or sealed wood. Avoid running over loose objects or carpet edges.
- Be extra careful when cleaning stairs.
- Keep hair, clothing, fingers, and all body parts away from openings and moving parts.
- Do not use the appliance to clean flammable or chemical substances such as gasoline, strong acids, or strong alkalis. Do not pick up sharp objects like metal nails, glass fragments, or needles.

Battery and Power

- Use only the battery pack and charger specified by Ultenic. Using other batteries may cause personal injury or fire.
- Do not touch the charger or plug with wet hands.
- Do not use the appliance with a damaged power cable or plug.
- If the WashVac Series has been dropped, damaged, left outdoors, submerged in water, or malfunctions, contact the service center immediately.
- If the battery is accidentally dropped and liquid leaks, avoid contact. If touched, rinse with water. If liquid enters the eyes, seek medical attention immediately.

Water and Cleaning

- Do not use the WashVac AC1 TriFlex when the water depth exceeds 5 mm.
- Do not operate the appliance without the filter in place.
- Clean the dirty water tank after each use to prevent clogging, poor suction, motor overheating, or reduced appliance lifespan.

Operation and Storage

- Turn off the appliance before making adjustments, replacing accessories, or storing it.
- Use, charge, and store the appliance only in a dry room with temperatures between 4 °C and 35 °C.
- For long-term storage, turn off the appliance and disconnect it from the power source.

Abnormal Conditions

- If the appliance overheats, makes abnormal noises, emits unusual smells, or leaks, stop using it immediately.

FCC Statement

This device complies with Part 15 of the FCC Rules. Operation is subject to the following two conditions:

1. This device may not cause harmful interference.
2. This device must accept any interference received, including interference that may cause undesired operation.

Warning: Changes or modifications not expressly approved by the party responsible for compliance could void the user's authority to operate this equipment.

Note: This equipment has been tested and found to comply with the limits for a Class B digital device, pursuant to Part 15 of the FCC Rules. These limits are designed to provide reasonable protection against harmful interference in a residential installation.

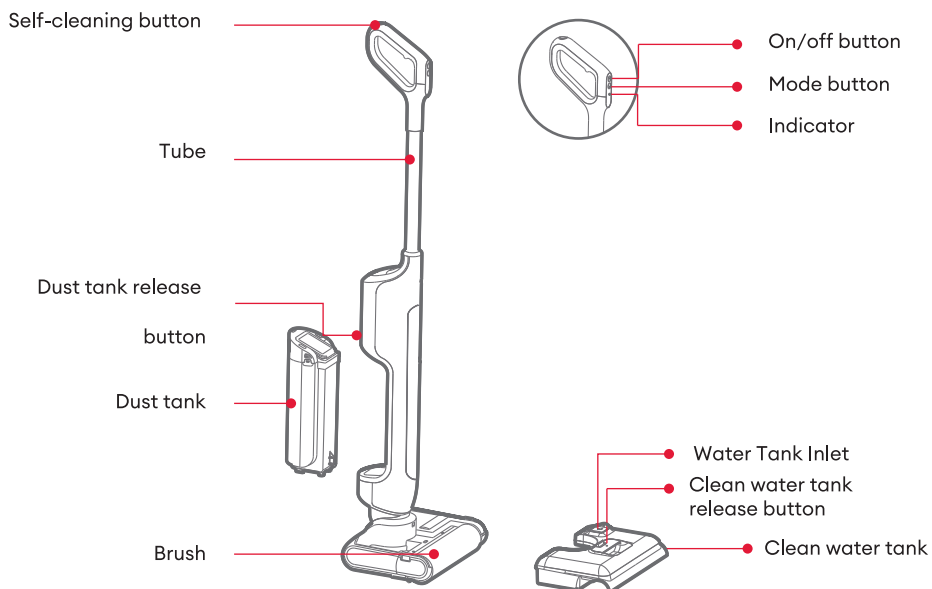
This equipment generates, uses, and can radiate radio frequency energy. If not installed and used in accordance with the instructions, it may cause harmful interference to radio communications. There is no guarantee, however, that interference will not occur in a particular installation.

If this equipment does cause harmful interference to radio or television reception (which can be determined by turning the equipment off and on), the user is encouraged to try to correct the interference by one or more of the following measures:

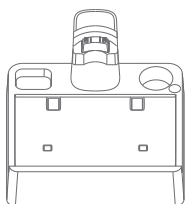
1. Reorient or relocate the receiving antenna.
2. Increase the separation between the equipment and the receiver.
3. Connect the equipment into an outlet on a circuit different from that to which the receiver is connected.
4. Consult the dealer or an experienced radio/TV technician for assistance.

INSTRUCTIONS FOR USE

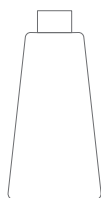
Product Structure



Accessories



Charging Dock



Cleaning Solution



Adapter



Cleaning Brush

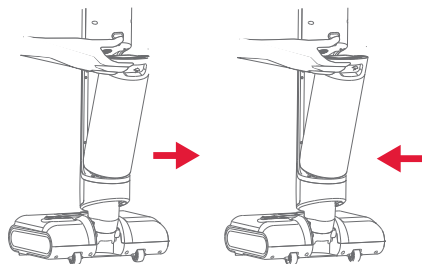
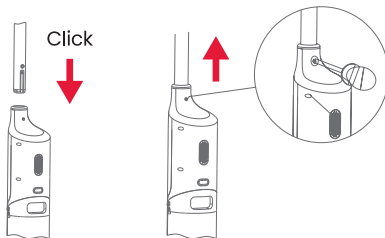


HEPA Filter

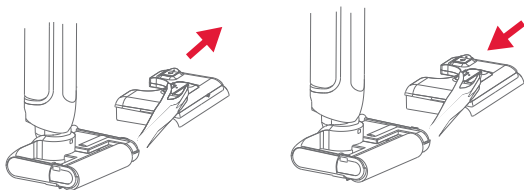
HOW TO USE

Main Body: Assembly & Disassembly Instructions

1. Align the end of the handle with the main unit's port in the direction indicated by the diagram. Insert it firmly until you hear a 'click' sound and the guide line on the port aligns with that on the handle. Ensure the handle is secure and without any looseness, indicating successful installation.
2. To detach, insert a rigid object into the hole on the back of the unit to press the spring latch. While holding it down, pull the handle upward to remove it.



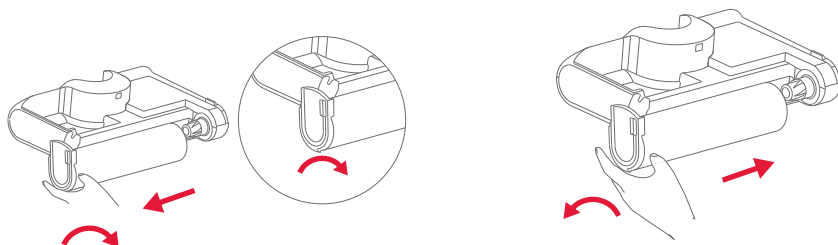
3. Hold the main unit with one hand. With your other hand, press the clean water tank button and pull outward to remove the tank.
4. Place the clean water tank into the corresponding position on the floor brush. Gently push the tank until you hear a 'click', indicating successful installation.



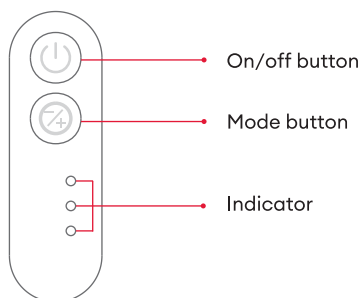
HOW TO USE

Roller Brush: Assembly & Disassembly Instructions

1. Turn the side cover plate of the roller brush, then pull the roller brush outward to remove it.
2. Position the right end of the roller brush at the right end of the floor brush, then rotate it inward until it clicks into place.



Remote Control: Buttons and Display Guide



Charging Indicator Instructions

1. Flashing Light: The device is charging.
2. Steady Light: The device is fully charged. The light will stay on for 10 minutes before turning off.

HOW TO USE

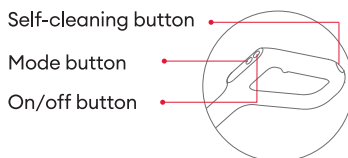
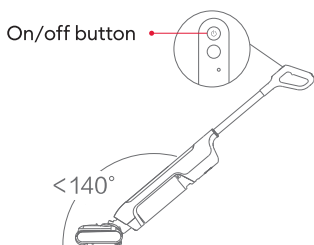
Operating Instructions

Preparation

1. Before use, ensure the cleaner has sufficient power. If the battery is low, charge the device fully before operation.
2. When powered on, the cleaner defaults to Smart Mode. You may select and switch to other modes or functions according to your cleaning needs.
3. Adding Water to the Clean Water Tank:
 - (1) Remove the clean water tank from the main unit.
 - (2) Open the rubber plug on the tank and fill it with clean water (below 30°C) up to the indicated water level.
 - (3) Close the tank cover securely to prevent leaks or looseness.
 - (4) Reinstall the clean water tank onto the main unit until you hear a click, indicating proper installation.

Start To Work

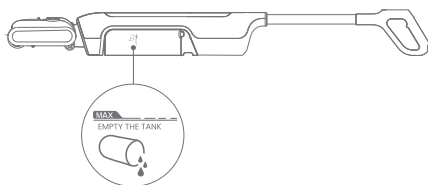
1. The main unit is equipped with a vertical start button. After pressing it, tilt the machine for use. For optimal performance, the tilt angle should not exceed 140°.
2. Tilt the main unit to activate the machine and begin operation.



Horizontal Position

The lie-flat function is activated when the main unit is positioned at 180°.

Before using this function, check whether the wastewater in the tank has reached the maximum level. If it has, empty the wastewater tank before use.



Inclination angle



Inclination angle



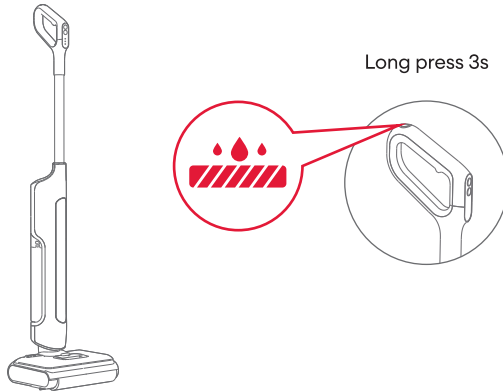
HOW TO USE

| Description | Operating Instructions |
|--------------------------------|--|
| On/off Button | Press the ON/OFF button to turn the cleaner on/off. |
| Standard Mode | The device defaults to Standard Mode upon startup, making it suitable for daily household cleaning. |
| Max Mode | Press the gear switch button, and switch the mode to the MAX mode. The mode is suitable for removing stubborn stains and water accumulation. |
| Water Absorption Mode | This mode only absorbs water and is suitable for bathrooms to absorb excess water. |
| Auto Cleaning | In the charging state, press the Auto Cleaning button, and the cleaner will automatically clean the roller brush and pipeline. |
| Low Battery Reminder | If the battery capacity is less than 20%, the red aperture light above the "battery capacity" of the battery pack will flash. It is recommended to put the cleaner back into the charging dock for charging. |
| Dirty Water Pouring Reminder | If the dirty water tank is full, the main unit will announce "Dirty water tank full" and automatically shut down. Please empty the tank promptly to prevent odors. After emptying, reinstall the tank and restart the main unit. |
| Water Adding Reminder | If the clean water tank is empty, the main unit will announce "Clean water tank low". Please add water. Turn off the main unit, remove the clean water tank, and add clean water. Before restarting the main unit, reinstall the clean water tank. |
| Roller Brush Cleaning Reminder | If the roller brush is tangled with hair or other debris, the main unit will announce "Clean the roller brush" and will automatically shut down. Please remove the roller brush and clean it. After reinstalling the roller brush and ensuring the clean water tank is installed, restart the main unit. |

HOW TO USE

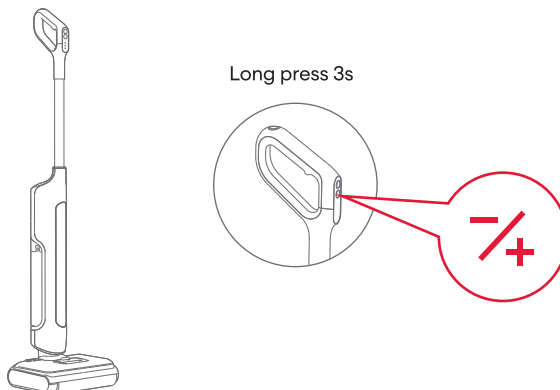
Voice off & on

Requirement: The machine has to be in upright standby before the voice can be turned off or on. Press and hold the self-cleaning button for 3 seconds to turn on/off the voice. When the voice is turned off, the screen will display a mute status.



Language Switch

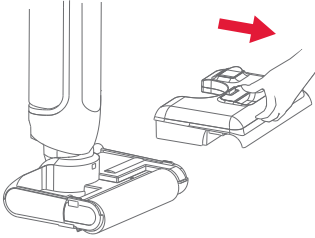
Requirement: The device must be in an upright standby position to switch the language. Press and hold the mode switch button for 3 seconds. The main unit will announce "Starting language switch" (available languages: English, German, French, Italian, Spanish). After the switch is complete, the unit will announce "Language switch complete".



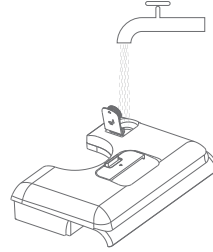
HOW TO USE

Fill the clean water tank

1. Press the clean water tank release button lightly and remove the tank.

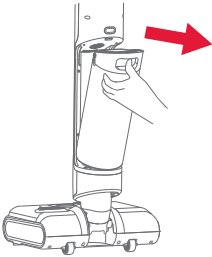


2. Open the top cover of the clean water tank, fill it with water, and reinstall it onto the main body.

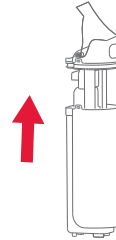


Dirty Water Pouring

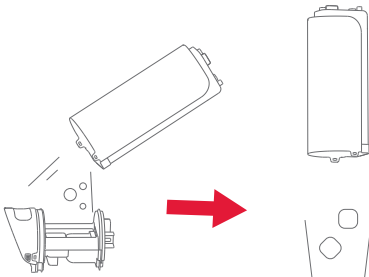
1. Press the dirty water tank release button lightly and remove the tank.



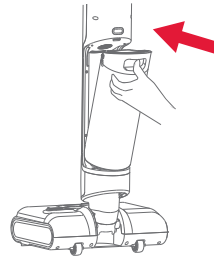
2. Hold the barrel with one hand and pull the dirty water tank lid upward with the other hand.



3. To dispose of solid waste, use the filter to separate it and pour into the trash bin. Then pour out the wastewater.



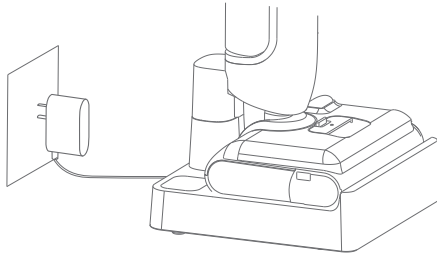
4. Reinstall the dirty water tank back onto the main body until you hear a click, indicating it is securely in place.



HOW TO USE

Product Charging

1. After use, place the cleaner vertically on the charging station, insert one end of the adapter into the charging dock, and connect the other end to a socket in the home. During charging, keep the cleaner upright and close to the toe of the wall to avoid tripping and other injuries.
2. The power indicator flashes during charging.
3. When charging is complete, the power indicator will stay on and will turn off after 10 minutes.



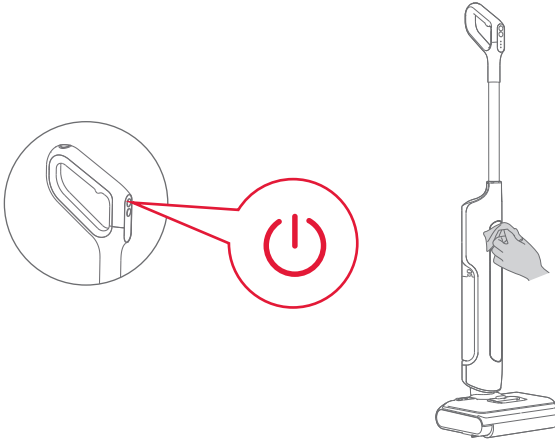
Reminders:

1. Generally, 10-50% of the battery capacity is reserved when the product leaves the factory. It is recommended to fully charge the product when using it for the first time to ensure the effect and duration of use.
2. Please fully charge the battery before use if it has not been fully charged for a long time.
3. It takes 4 hours for the battery to be fully charged at room temperature. The actual charging time varies depending on the ambient temperature and voltage.
4. After fully charged, if there is no other operation, the cleaner will automatically shut down and all indicator lights will be off.
5. If the product is not used for a long time after purchase, please use the special charging dock provided by us to charge the battery for 3 hours every 3 months (without full charging).

MAINTENANCE AND CLEANING

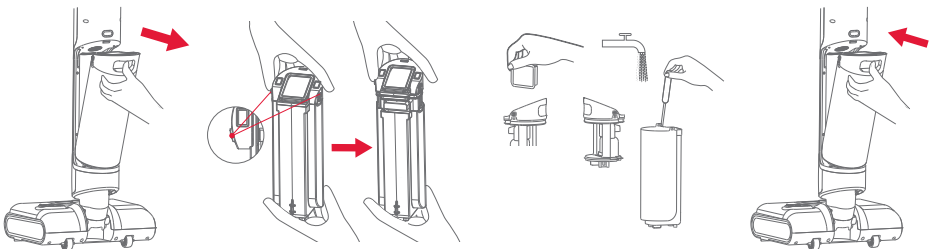
Clean the Appliance's Main body

1. Before cleaning, make sure that the machine is powered off.
2. Wipe the body with water or neutral detergent. Before wiping, be sure to wring the cleaning cloth dry, and do not let water flow into the machine.



Clean the Dirty Water Tank

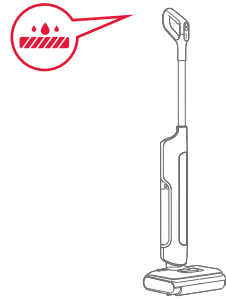
1. Remove the dirty water tank when it is full or when the machine is powered off after use.
2. Press the buttons on both sides of the top of the dirty water tank with one hand and lift upward, while holding the bottom with the other hand to remove the tank cover.
3. Pull the sponge upward out of the dirty water tank cover. When cleaning the sponge, wash and air-dry it separately. Ensure it is completely dry before reuse! After pouring out the wastewater, rinse the dirty water tank and its cover with clean water. Use the included cleaning brush to scrub the inner walls of the tank thoroughly.
4. After cleaning is complete, attach the dirty water tank cover and reinstall the dirty water tank onto the main unit.



MAINTENANCE AND CLEANING

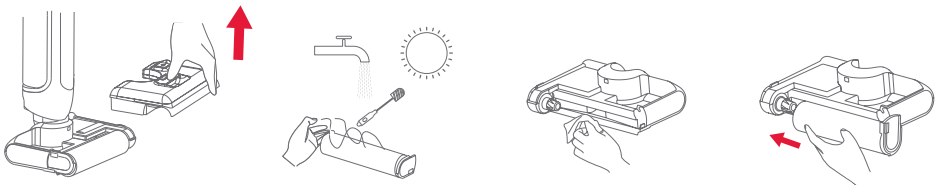
Auto Cleaning

1. Please put the machine back to the base in time after use.
2. Make sure that the water volume of the clean water tank exceeds the auto cleaning minimum water level, and the dirty water tank has no dirty water. Then press the auto cleaning button, and the machine will start auto cleaning.
3. After auto cleaning, please clean the dirty water tank and dry the roller brush and HEPA in the air.



Clean the roller brush assembly

1. Remove and clean the floor brush suction inlet with the cleaning brush.
2. Use the included cleaning brush to remove hair or debris tangled on the brush head. Rinse the roller brush with clean water and allow it to dry completely before use.
3. Wipe dust and dirt from the suction inlet with a dry cloth or wet wipe. Do not rinse the floor brush with water.
4. After cleaning is complete, reinstall the roller brush back into the floor brush.



Important Notes

1. Before cleaning, always ensure the main unit is powered off and the charger adapter is unplugged from the electrical outlet.
2. Wipe the main unit with water or a neutral detergent. Before wiping, wring out the cleaning cloth thoroughly and avoid allowing water to enter the interior of the machine.
3. Regularly clean the roller brush, suction inlet, and tubing to maintain optimal performance.
4. If the sponge is heavily soiled, rinse it with clean water and ensure it is completely dry before reuse.
5. After cleaning heavy oil stains, it is recommended to run the self-cleaning function several times to thoroughly clean the roller brush and tubing. Alternatively, after self-cleaning, remove the roller brush and soak or rinse it with warm water. Ensure it is completely dry before use.

TROUBLESHOOTING AND SOLUTIONS

| Problem | Possible Cause | Solution |
|--|--|--|
| Poor running of roller brush | The roller brush is blocked | Please clean the roller brush |
| | The roller brush is worn | Please contact the authorized after-sales service center to replace the roller brush |
| | The drive belt is worn | Please contact the authorized after-sales service center to replace the drive belt |
| Abnormal operation of the vacuum cleaner | The roller brush, clean water tank, or dirty water tank is not properly installed. | Please reinstall them |
| | The suction port or pipe is blocked | Please clean the suction port or pipe |
| | The dirty water tank has reached its maximum capacity. | Remove and empty the dirty water tank. |
| | The filter port above the dirty water sensor is dirty | Please clean the filter port |
| | The HEPA is dirty or missing | Please clean or install the HEPA |
| | The roller brush is entangled by objects such as hair | Please clean the roller brush thoroughly. |
| Abnormal noise during operation | The dirty water tank has reached its maximum capacity. | Remove and empty the dirty water tank. |
| | The suction port is blocked | Please clean the suction port |
| | The floor brush is not installed correctly. | Please reinstall the floor brush |
| No water comes out during operation | The clean water tank is empty. | Refill the clean water tank |
| | The clean water tank is not properly installed | Please reinstall it |

TROUBLESHOOTING AND SOLUTIONS

| | | |
|---|---|---|
| The roller brush automatically stops working | The floor brush protection device has been activated due to foreign matter blocking the roller brush. | Check for any debris or obstructions around the roller brush. Remove them, reinstall the roller brush, and restart the machine. |
| Air outlet leakage | The HEPA filter is still wet after cleaning. | Dry the HEPA filter completely before reinstalling. |
| | The HEPA is not installed | Please install the HEPA |
| Water leakage at the bottom of the roller brush | The dirty water tank or HEPA is not installed | Please install the dirty water tank or HEPA |
| | The water pump is damaged | Please contact the authorized after-sales service center to replace the water pump |
| Auto cleaning fails to start | The machine is not correctly positioned on the charging dock. | Please correctly place the machine to the charging dock and correctly connect the adapter |
| Clean water tank leakage | The clean water tank is damaged | Please contact the authorized after-sales service center to replace the clean water tank |
| No voice function | The voice function is turned off. | Press and hold the gear switch button for 3 seconds while the device is powered on to enable voice mode. |
| | The speaker (horn) is damaged. | Please contact the authorized after-sales service center to repair the horn |
| Error: Waste Water Tank is Full | The dirty water tank has exceeded the maximum water level. | Empty and clean the dirty water tank immediately to prevent motor or fan damage. |
| | Excessive foam due to non-recommended or overly concentrated detergent. | Use only the recommended detergent and measure the proper amount (one capful). Avoid using household cleaners that produce too much foam. |
| | Iron-containing liquids (e.g., soy sauce) have affected the water level sensor. | Clean the dirty water tank and its cover thoroughly, then reinstall correctly. |
| | Water has entered the dirty water tank cover. | Do not soak or rinse the tank cover directly under water. If water enters the cover, shake out the excess, dry it in sunlight for 24 hours, then reinstall. |

PRODUCT SPECIFICATION

| | |
|-------------------------------|------------------|
| Product Model | AC1 TriFlex |
| Charging Input | 100-240V-50/60Hz |
| Voltage and Electric Quantity | 29.6V, 2600mAh |

WARRANTY INFORMATION

This product comes with a limited warranty. Scan the QR code to register within **7 days** for **a chance to receive an extra accessory or a warranty extension.**



Register Your Warranty

Customer Service

| | |
|----------------|------------------------|
| United States | service-us@ultenic.com |
| Deutschland | service-de@ultenic.com |
| France | service-fr@ultenic.com |
| España | service-es@ultenic.com |
| Canada | service-ca@ultenic.com |
| United Kingdom | service-uk@ultenic.com |
| Italia | service-it@ultenic.com |
| 日本 | service-jp@ultenic.com |
| Others | support@ultenic.com |



www.ultenic.com



Ultenic_Official



ultenic__official



UltenicOfficial



Ultenic_Official



Ultenic_Official