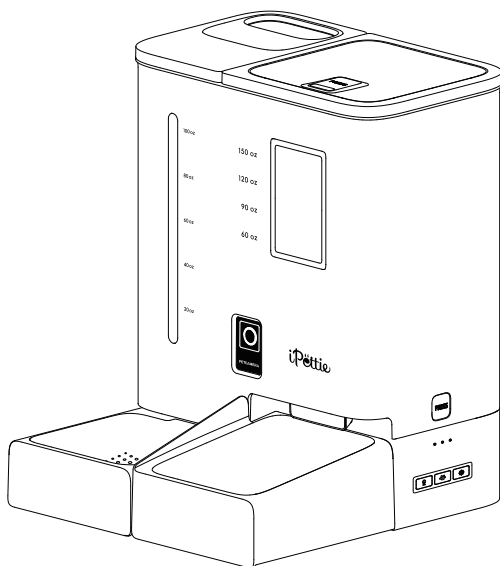




FW54



Automatic Pet Feeder & Gravity Water Dispenser (Camera Version)

User Manual

This guide details the functions and setup of the product. Please follow the steps in this manual to install the machine and keep this manual for further guidance.

Contents

SAFETY PRECAUTIONS	01
WHAT'S IN THE BOX	03
SPECIFICATIONS	04
GETTING TO KNOW YOUR PRODUCT	05
BUTTONS AND INDICATORS OVERVIEW	06
USE INSTRUCTION	07
DEVICE DISASSEMBLY & CLEANING	17
TROUBLESHOOTING	20

SAFETY PRECAUTIONS

DEVICE PLACEMENT

1. The pet feeder should be placed on a level surface. Do not place or store the device where it can fall or be pulled.
2. Designed for indoor use only. Keep away from direct sunlight or moisture.
3. Do not expose the feeder to temperatures below 0°C (32°F).
4. Do not place any foreign objects in the feeder.
5. Make sure there are no objects on and around the food bowl that would prevent pets from eating normally.

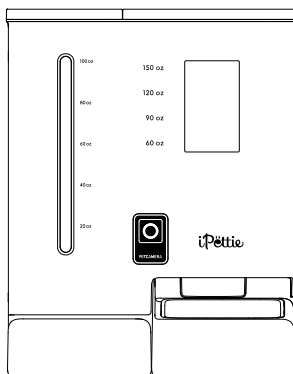
IMPORTANT SAFETY INFORMATION

1. To ensure proper functioning, please ensure that the power supply is securely plugged in.
2. This product is only suitable for cats and small dogs.
3. Do not allow small children to play with, in, or around the feeder.
4. Do not submerge the control board in water at any time, as this may damage electronic components.
5. Do not disassemble the product beyond its individual components.
6. Do not place or store in a tub or sink.
7. Do not get the charging port wet. If the charging port gets wet, it should be allowed to fully dry before charging.
8. The feeder supports charging with 5V 1/2A adapters.
9. Please use an alkaline D battery for the power supply. Rechargeable batteries cannot be used.
10. Do not allow pets to chew on or swallow any part of the device.
11. Do not use the pet feeder for any purpose other than feeding pets.
12. The power adapter must be connected to a wall outlet to use the app connection.

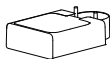
13. The desiccant is not edible. If it is damaged, do not use it.
14. The feeder is only applicable for 3-14 mm diameter dry pet food.
15. Do not disassemble the product other than the components as instructed in this operating guide.

WHAT'S IN THE BOX

HOST



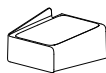
ACCESSORIES



Water Bowl Tray



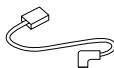
Melamine Water Bowl



Food Tray



Melamine Food Bowl



Power Cable



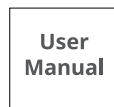
Power Adapter



Fliter



Clean Water Bucket

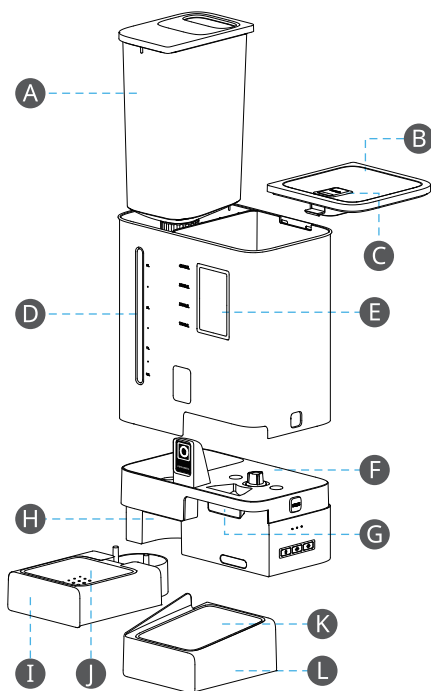


User Manual

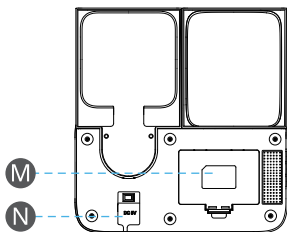
SPECIFICATIONS

Product Model	FW54
Dimension	7.7"x12.5"x17.1" / 317mm x 195mm x 435mm
Material	Food grade ABS, Melamine
Net Weight	6.3lb / 2.88KG
Food Type	3-14 mm / 0.11-0.55 in diameter dry pet food
Water Tank Capacity	123oz
Food Tank Capacity	176oz
Power Supply	DC 5V 1A / 3*D sized batteries
Rated Voltage	5V
WiFi Connection	2.4G & 5G
Working Temperature	32-104°F/ 0°-40°C

GETTING TO KNOW YOUR PRODUCT







- A Water Tank
- B Upper Cover
- C Uncapping Snap
- D Visual Water Volume Window
- E Pet Food Viewable Window
- F All-in-One Bottom Bracket
- G Outlet For Food
- H Outlet
- I Water Bowl Tray
- J Water Bowl
- K Food Bowl
- L Food Tray
- M Battery Compartment
- N Power Socket



BUTTONS AND INDICATORS OVERVIEW



-  **Recording:** Press and hold for 1 second to start recording with one "beep", and release to end recording with two "beeps". The maximum length of recording is 10 seconds.
-  **Feeding button:** Press it to dispense one serving of food. If you have set a recording, it will play one time.
-  **Reset:** Press and hold the key for 6 seconds to hear a "beep" sound, the device will be reset and the network information, feeding records, and recording data will be cleared. Under the unlocked state, you can press and hold the button "" to restore the factory settings; under the locked state, no keys can be operated.

* Note:

- The key is automatically locked after 30 seconds of no operation, you can press and hold the feeding button again for 3 seconds, it will be unlocked after hearing two "beeps".

INDICATORS

Indicator Light Color	Indicator Light Signal	Device Status
White	Blinking	Connecting
	Ever Bright	Connected
Red	Flash	Motor stalling
	Slow flash	Low battery
	Flash	Food outlet clogged

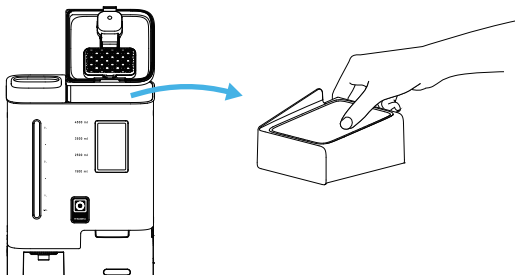
*** Note:**

- When the equipment fails (low battery, motor blocked, food outlet blocked), the APP will push alerts to your phone.

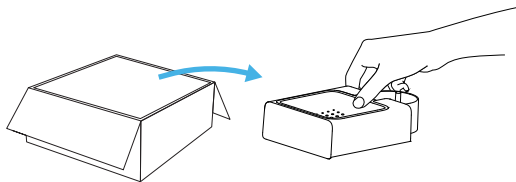
USE INSTRUCTION

01. ASSEMBLY

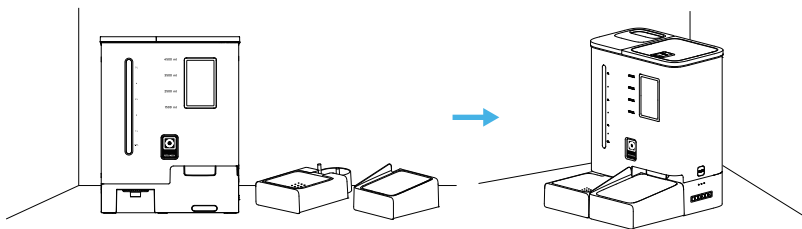
- Remove food trays (with bowls) from food tank.



- Remove water bowl trays (including bowls with water holes) from the box.



- Place the base of the feeder on a horizontal plane, take out the water bowl and food trays, and snap them onto the base.



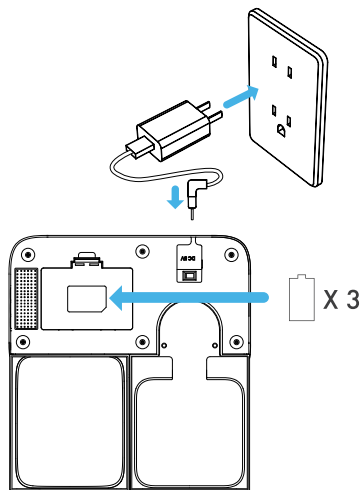
- Open the desiccant box on top lid, tear off the transparent wrapping paper of the desiccant bag, then place it into the box and close it.

02. CONNECT THE POWER SUPPLY

- **Battery power supply** (APP will not work with battery power): Insert 3 alkaline "D size" batteries and reinstall the battery cover.
- **Power adapter supply**: plug in the power adapter and connect the power cable into the slot.

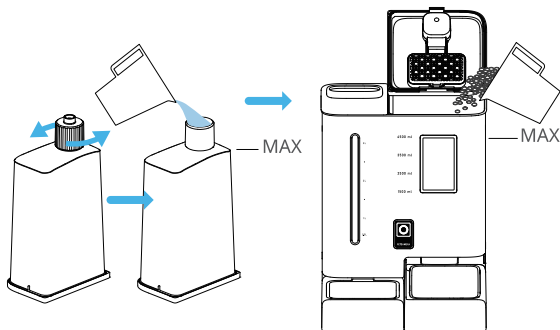
* Note:

- The LED lights up to indicate that the feeder is powered. Please use standard alkaline batteries. Do not mix batteries of different specification and models, or new and old batteries.



03. FILL WITH WATER AND FOOD

- Unscrew the water outlet cover and add clean water to the left bucket.
- Fill the food bucket with dry pet food between 3-14mm in diameter, place the water tank firmly, and close the food bucket lid.



*** Note:**

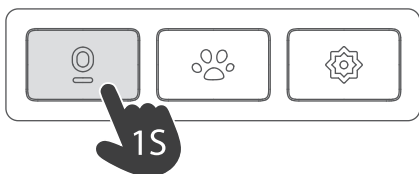
- Do not use canned, wet, or damp pet food.
- Depending on the number of pets being fed, observe the water level window at appropriate intervals and add sufficient amounts of clean water.

04. RECORDING


- Press and hold the Record button for 1 second, you will hear a beep to start the recording and release it to end the recording with two beeps. The maximum recording time is 10 seconds.
- Repeat this process each time to change your recording.

*** Note:**

- If you already have a recording set, short press the Record button to play the recording.
- After the food comes out, the machine will play the recording to remind your pet to eat.

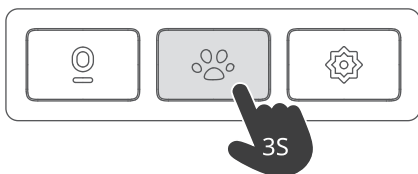


05. LOCK/UNLOCK

- If there is no operation on the buttons for 30 seconds, the buttons will be locked with a beep sound.
- Press and hold the  button again for 3 seconds with two beep sounds to unlock it.

* Note:

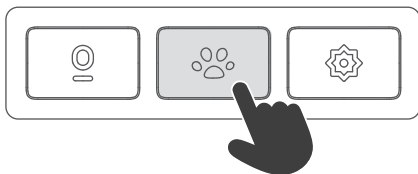
- Any button is inoperable when locked and must be unlocked for normal use.
- App operation will not be affected when locked.



06. MANUAL FEEDING

- Short press to dispense 1 portion of food.
- If there is a recording, the recording will be played once after the food is dispensed.

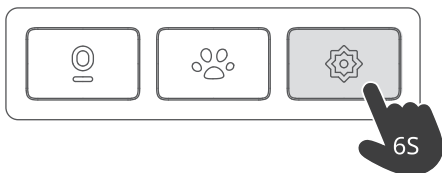
* **Note:** Feeding schedules will not be affected.



07. RESET

- Press and hold for 6 seconds to make a beep sound, the device will be restored to factory settings, and all network configuration information, feeding plans, and recording data will be cleared.

* **Note:** Feeding records must be reset in the app to clear them.



08. DOWNLOAD THE APP & LOG IN

- Search 'AIR.ai' on the App Store or Google Play and download it.



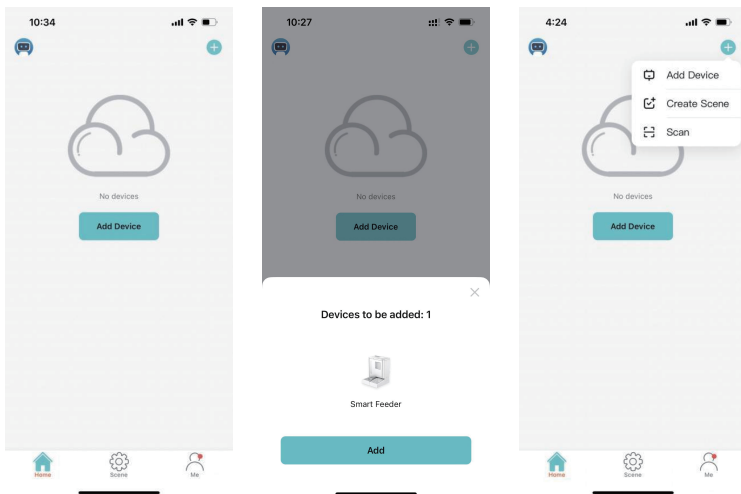
AIR.ai



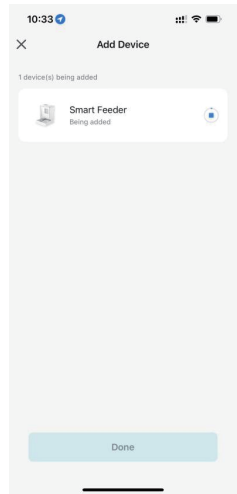
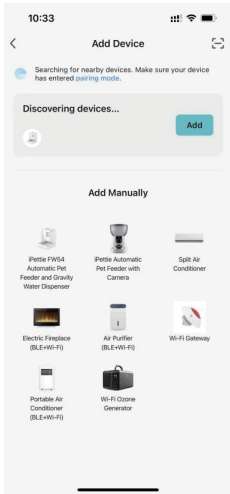
- Sign up or Log in to your account.

* **Note:** Both 2.4 GHz and 5 GHz WiFi networks can be used.

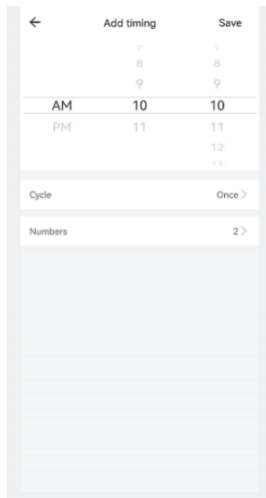
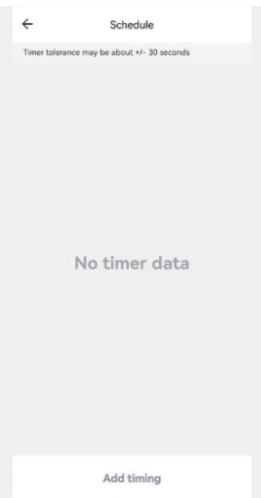
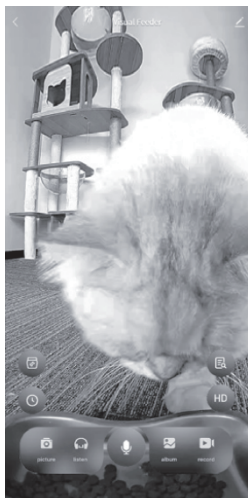
09. APP SPECIFIC OPERATION



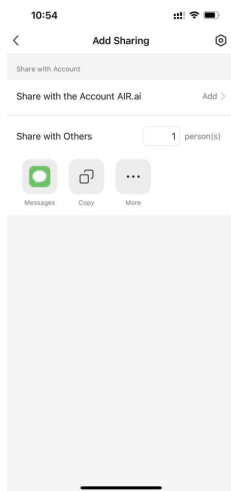
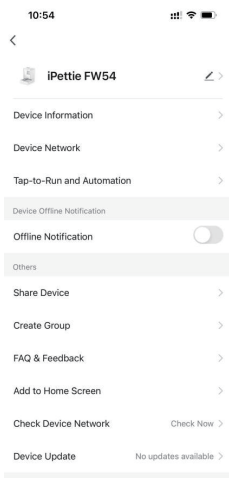
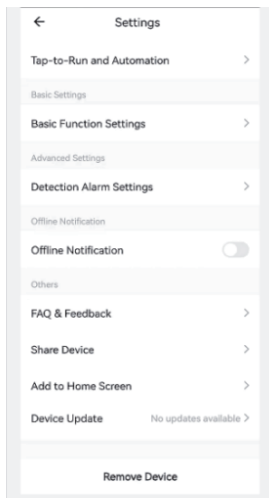
- 1) Open your phone's Bluetooth.
- 2) After entering the interface, if the device is automatically discovered, click "Add", and go to step 5. Otherwise, go to Step 3.
- 3) Click "Add Device" to enter the interface.



- 4) After entering the interface, wait for the device to be discovered automatically and click "Add".
- 5) Input your WiFi password (the user name cannot use non-Roman characters, and the password cannot use special symbols).
- 6) Wait to connect to the network.
- 7) After adding successfully, you can customize the device name, then click "Done".



- 8) Point to the upper right corner of the video interface settings, can be customized to set the video features.
- 9) Click the home page "feeding program" to add timed feeding.
- 10) You can customize the setting time and number of copies, settings can be selected from Monday to Sunday, point to save it.



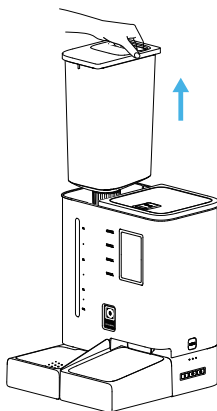
11) Enter the setting options, you can turn on or off the child lock, ambient light, indicator light, view other basic functions.

12) Steps to share the device:

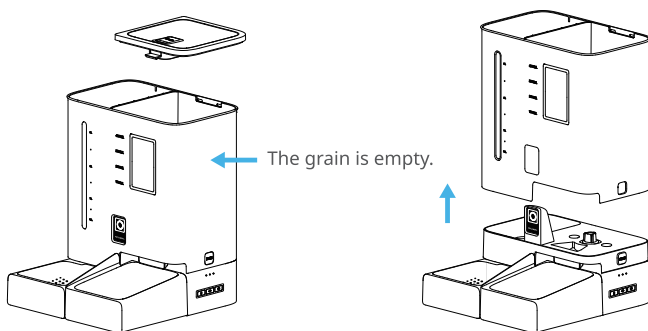
- Main interface: Click the icon in the upper right corner to enter the settings options.
- Enter the settings menu option and click "Share Device".
- After the addition is successful, you can customize the device nickname and click on the upper right corner to complete it.

DEVICE DISASSEMBLY & CLEANING

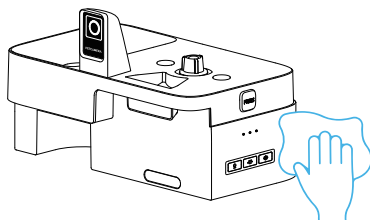
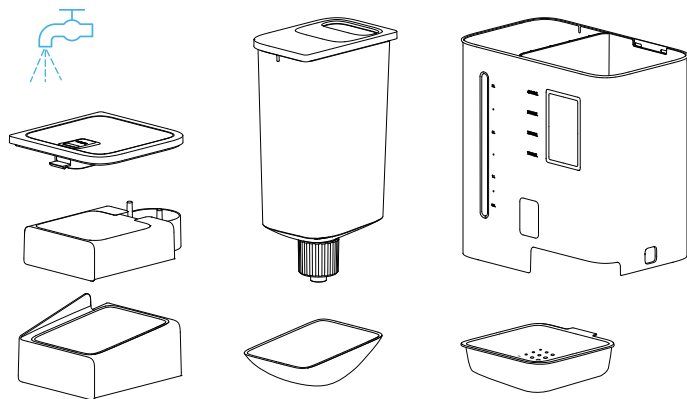
1. Unplug the power supply and remove the batteries. Remove the tank upwards as shown and use a brush to clean the inside of the tank.



2. Open the lid and empty the food bucket of pet food. Press and hold the "PRESS" button on both sides and lift up.



3. Use a dry soft cloth to wipe the base. The body is not waterproof, please do not use a wet cloth.



4. Replace the desiccant pack

Open the desiccant box cover and replace the desiccant pack. It is suggested to replace it every 1-2 months.

5. Replace Alkaline Batteries

Unplug and open the battery lid at the bottom, then you can replace the batteries.

6. Replace or Change the Food

Empty the food hopper, then fill with fresh food and proceed with instant feeding to ensure it works correctly.

* **Attention:**

- Please keep the food hopper dry after cleaning.
- Please replace the food regularly if your pets did not eat the food in time. (For the specific time period, please refer to the food packaging instructions).
- Please clean and maintain your device regularly to prolong the useful lifespan of your pet feeder.

TROUBLESHOOTING

Problem	Solution
<p>The App cannot connect to the Product.</p>	<ol style="list-style-type: none">1) Please check whether the Wi-Fi name and password use non-Roman characters or longer than 12 characters.2) Please restart your phone, close non-system software that starts automatically when you turn it on, turn on your phone's Bluetooth, and try to reconnect.
<p>The product appears offline.</p>	<p>Please check whether the distance between the feeder and the router at home is more than 10 meters (the effective distance is 10 meters); try not to have a wall in the middle. According to the characteristics of Wi-Fi, the Wi-Fi signal on the wall will drop sharply and the connection will become unstable, thus causing the device to go offline.</p>

Problem	Solution
<p>The feeder does not discharge food accurately or does not discharge food at all.</p>	<ol style="list-style-type: none"> 1) Please make sure the food in the hopper is dry and the food size is within 3-14 mm/0.11-0.55 inch in diameter. 2) Remove the food hopper and base, and check if the chute inside is blocked. 3) Check if the anti-clog detector at the food outlet is dirty or blocked. 4) Check whether the battery level is low, whether the power adapter is connected, and whether a power shortage occurs when the power adapter is connected and batteries are not installed. 5) Please check whether there is too much food in the food basin or blockage of the food passage. If so, please clean the food passage and the food outlet in time. When using the battery power supply, please check whether the battery is dead and whether the battery is leaking.

iPottie

MADE IN CHINA

FC RoHS CE



This device complies with Part 15 of the FCC Rules.

Operation is subject to the following two conditions:

- (1) this device may not cause harmful interference, and (2) this device must accept any interference received, including interference that may cause undesired operation.