

The following is suggested text to be included in the vehicle Owner's Manual, to assist the End User with functionality of their HomeLink Device. Italicized text is not intended to be part of the manual text, just provided for clarification only.

The HomeLink Wireless Control System provides a convenient way to replace up to three hand-held radio-frequency (RF) transmitters used to activate devices such as gate operators, garage door openers, entry door locks, security systems, even home lighting. Additional HomeLink information can be found at www.HomeLink.com, www.youtube.com/HomeLinkGentex, or by calling the toll-free HomeLink-Hotline at 1-800-355-3515

Before Programming HomeLink

During programming, it is possible that garage doors, gates, or other devices may operate. For this reason, make sure that people and objects are clear of the garage door or other devices to prevent injury or other potential harm.

Do not use HomeLink with any garage door opener that lacks safety stop and reverse features as required by U.S. federal safety standards (this includes any garage door opener model manufactured before April 1, 1982). A garage door that cannot detect an object - signaling the door to stop and reverse - does not meet current U.S. federal safety standards.

It is recommended that a new battery be placed in the remote control transmitter for more accurate programming.

Garage door opener motors manufactured after 1995 may be equipped with rolling code protection. If this is the case, you may need a stepladder or other sturdy, safe device to reach the "Learn" or "Smart" button on the garage door motor.

Retain the original transmitter of the RF device you are programming for use in other vehicles as well as for future HomeLink programming.

It is suggested that upon the sale or lease termination of the vehicle, the programmed HomeLink buttons be erased for security purposes. Refer to "*Erasing HomeLink Buttons*" later in these instructions.

You can program a maximum of three devices. To change or replace any of the three devices after it has been initially programmed, you must first erase the current settings. See '*Erasing HomeLink Buttons*' or '*Reprogramming a Single HomeLink Button*' later in these instructions.

Please note that the instructions below apply to the majority of HomeLink use cases. However, there are some HomeLink applications or HomeLink compatible systems that require slightly different instructions.

HomeLink and the HomeLink house are registered trademarks of Gentex Corporation.

Programming a New HomeLink

Note: Some vehicles may require the ignition switch to be turned on or to the second (“accessories”) position for programming and/or operation of HomeLink.

1. Press the HomeLink button that you would like to program. The indicator light will flash slowly (if not, refer to “**Erasing HomeLink Buttons**” later in these instructions). You do not need to continue holding the HomeLink button.
2. Position the end of your hand-held transmitter 1–3 inches (2–8 cm) away from the HomeLink button while keeping the indicator light in view.

Note: Some hand-held transmitters may actually train better a distance of 6-12 inches (15-20 cm). Keep this in mind if you have difficulty with the Programming Process.

3. Press and hold the hand-held transmitter button while watching the indicator light on HomeLink. Continue pressing the button until the HomeLink indicator light changes from slowly flashing to either rapidly flashing (rolling code) or continuously lit (fixed code). Now you may release the hand-held transmitter button.

Note: Some devices may require you to replace this “**Programming a New HomeLink**” **step 3** with procedures noted in the “**Gate Operator / Canadian Programming**” section. If the HomeLink indicator light does not change to a rapidly flashing light after performing these steps, contact HomeLink at www.HomeLink.com

4. Press the just-trained HomeLink button and observe the indicator light.
 - If the indicator light **stays on constantly**, programming is complete and your device should activate when the HomeLink button is pressed and released.
 - If the indicator **rapidly flashes**, firmly **press, hold for two seconds and release** the programmed HomeLink button. Repeat the “press/hold/release” sequence a second time, and, depending on the brand of the garage door opener (or other rolling code equipped device), repeat this sequence a third time to complete the programming process. At this point if your device operates, programming is complete.
 - **If the garage door does not operate, continue with “Programming a New HomeLink” steps 5-7** to complete the programming of a rolling code equipped device.
5. At the garage door opener receiver (motor-head unit) in the garage, locate the “Learn” or “Smart” Button. This can usually be found where the hanging antenna wire is attached to the motor-head unit (see the Garage Door Opener manual to identify the “Learn Button”).

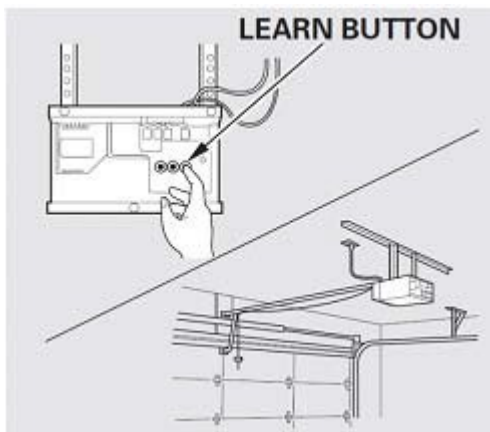


Figure 1: Approximate Learn Button Location

6. Firmly press and release the “Learn” or “Smart” button. (The name and color of the button may vary by manufacturer.) There are typically 30 seconds to initiate step 7.
7. Return to the vehicle and firmly **press, hold for two seconds and release** the programmed HomeLink button. Repeat the “**press/hold/release**” sequence a second time, and, depending on the brand of the garage door opener (or other rolling code equipped device), repeat this sequence a third time to complete the programming process.

HomeLink should now activate your rolling code equipped device.

In the event that there are still programming difficulties or questions, additional HomeLink information and programming videos can be found online at www.HomeLink.com, [youtube.com/HomeLinkGentex](https://www.youtube.com/HomeLinkGentex) or by calling the HomeLink Hotline.

Gate Operator / Canadian Programming

Canadian radio-frequency laws require transmitter signals to “time-out” (or quit) after several seconds of transmission – which may not be long enough for HomeLink to pick up the signal during programming. Similar to this Canadian law, some U.S. gate operators are designed to “time-out” in the same manner.

If you live in Canada **or** you are having difficulties programming a gate operator or garage door opener by using the “Programming” procedures, replace “**Programming a New HomeLink**” **step 3** with the following:

Note: If programming a garage door opener or gate operator, it is advised to unplug the device during the “cycling” process to prevent possible overheating.

3. **Press and release - every two seconds** (“cycle”) your hand-held transmitter until the HomeLink indicator light changes from slowly flashing to either rapidly flashing (rolling code) or continuously lit (fixed code). Now you may release the hand-held transmitter button.

Proceed with “**Programming a New HomeLink**” **step 4** to complete.

Using HomeLink

To operate, simply press and release the programmed HomeLink button. Activation will now occur for the trained device (i.e. garage door opener, gate operator, security system, entry door lock, home/office lighting, etc.). For convenience, the hand-held transmitter of the device may also be used at any time.

Erasing HomeLink Buttons

To erase programming from the three buttons (individual buttons cannot be erased but can be “reprogrammed” as outlined below), follow the step noted:

1. Press and hold the two outer HomeLink buttons for at least 10 seconds. The LED indicator will change from continuously lit to rapidly flashing.
2. Release both buttons.
Note: Do not hold for longer than 20 seconds.
3. HomeLink is now in the train (or learning) mode and can be programmed at any time beginning with “**Programming a New HomeLink**” - step 1.

Reprogramming a Single HomeLink Button

To program a device to HomeLink using a button previously trained, follow these steps:

1. Press and hold the desired HomeLink button. **DO NOT** release the button.
2. The indicator light will begin to slowly flash after 20 seconds. The HomeLink button may be released at this point. Proceed with “**Programming a New HomeLink**” - step 2
3. If you do not complete the programming of a new device to the button, it will revert to the previously stored programming.

For questions or comments, visit www.HomeLink.com, youtube.com/HomeLinkGentex or by calling the HomeLink Hotline

The following is required text to be included in the Vehicle Owner's Manual, as part of Homologation regulations globally if applicable.

**A general requirement is that the Owner's Manual shall be written in the native language of the country of use.*

FCC (USA) and ISED (Canada)

This device complies with FCC rules part 15 and Innovation, Science, and Economic Development

Canada RSS-210. Operation is subject to the following two conditions: (1) This device may not cause harmful interference, and (2) This device must accept any interference that may be received including interference that may cause undesired operation. **WARNING:** The transmitter has been tested and complies with FCC and ISED rules. Changes or modifications not expressly approved by the party responsible for compliance could void the user's authority to operate the device.

This equipment complies with FCC and ISED radiation exposure limits set forth for an uncontrolled environment. End Users must follow the specific operating instructions for satisfying RF exposure compliance. This transmitter must be at least 20 cm from the user and must not be co-located or operating in conjunction with any other antenna or transmitter.

FCC (États-Unis) et ISED (Canada)

Cet appareil est conforme aux règlements de la FCC, section 15, et au CNR-210 d'Innovation, Sciences et Développement économique Canada. Le fonctionnement est assujéti aux deux conditions suivantes : (1) cet appareil ne doit pas causer d'interférences nuisibles et (2) cet appareil doit accepter toute interférence reçue, y compris celle qui pourrait entraîner un dysfonctionnement. **MISE EN GARDE :** L'émetteur a subi des tests et est conforme aux règlements de la FCC et d'ISDE. Les changements ou modifications non approuvés explicitement par la partie responsable de la conformité pourraient rendre caduque l'autorisation de l'utilisateur de se servir du dispositif.

Cet appareil est conforme aux limites d'exposition aux radiations de la FCC et d'ISDE établies pour un environnement non contrôlé. Les utilisateurs finaux doivent respecter les instructions d'utilisation spécifiques pour satisfaire aux exigences de conformité aux expositions de RF. L'émetteur doit se trouver à 20 cm au minimum de l'utilisateur et ne doit pas être situé au même endroit que tout autre émetteur ou antenne ni fonctionner avec un autre émetteur ou antenne.