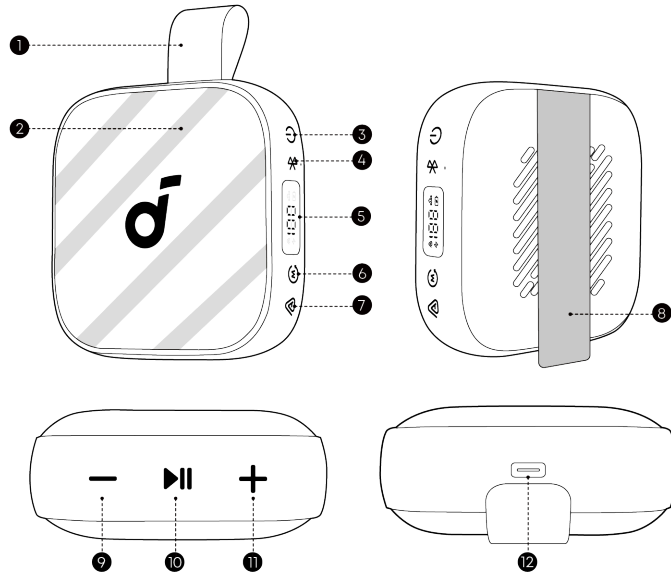
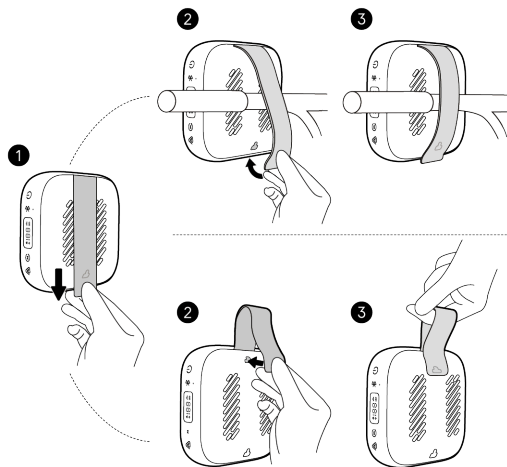


At a Glance



1	Carrying Handle (formed by the Mounting Strap)	7	Auracast Button
2	LED Light Strip	8	Mounting Strap
3	Power Button	9	Volume Down Button
4	Bluetooth Button	10	Play / Pause Button
5	LED Power Display	11	Volume Up Button
6	Mode Button	12	USB-C Charging Port

Using the Mounting Strap



soundcore Boom Go 3i comes with a flexible Mounting Strap that makes it easy to carry or secure the speaker to different objects, such as a bicycle handlebar, backpack strap, or tent pole.

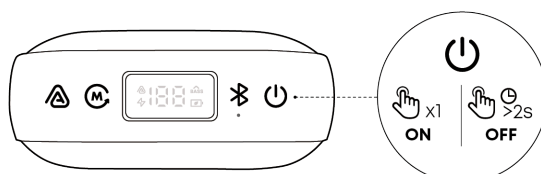
To attach the speaker:

1. Pull the strap down to release it from the latch.
2. Loop the strap around the desired object.
3. Pull the strap back up and fasten it firmly until it clicks into place. Make sure the strap fits snugly and the speaker is stable.

To form a carrying handle:

1. Pull down the strap to release it from the latch.
2. Lift the strap upward and attach it back into the latch to create a loop.
3. Ensure it is fully locked. The strap now functions as a carrying handle, allowing you to easily carry or hang your speaker.

Powering On / Off

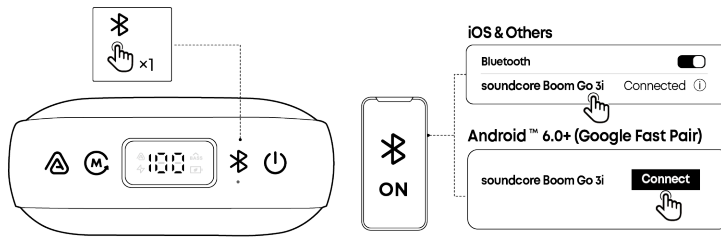


- This speaker will power off automatically after 20 minutes if no device is connected.



- You can customize the auto power off time in the soundcore app.

Bluetooth Mode



After powering on the speaker, the speaker will automatically enter pairing mode. If the speaker cannot be found on your mobile device, press the Bluetooth button to manually enter pairing mode, then select "soundcore Boom Go 3i" from the Bluetooth list to connect.

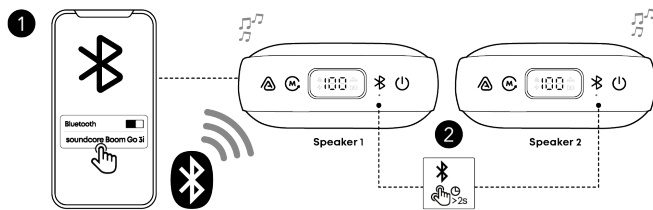
Google Fast Pair Supported: Enjoy instant pairing with your Android smartphone (running Android 6.0 or above) using Google Fast Pair. Please sign in to your Google account before using Google Fast Pair.

	When the speaker is not connected, press once to enter Bluetooth pairing mode. With one speaker already connected, press once to enable Dual Connections feature.	
	Flashing Blue	Bluetooth Pairing
	Steady Blue	Bluetooth Connected



- If the speaker is not connected to a device within 3 minutes after being powered on, it will automatically exit Bluetooth pairing mode.
- To re-enter Bluetooth pairing mode, press the Bluetooth button once.
- This speaker can only play music on one mobile device at a time. If another connected device starts playing music, the speaker will automatically take over and interrupt the current playback without requiring the first device to pause.
- Each time you power on your speaker, it will automatically connect to your last connected device if available within the Bluetooth range. If not, press the Bluetooth button to enter Bluetooth pairing mode.

True Wireless Stereo (TWS) Mode

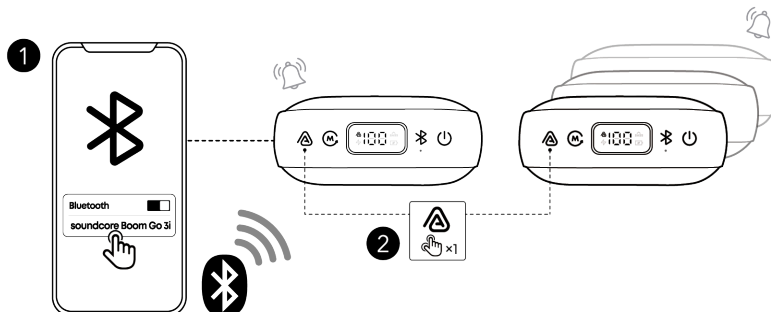


Two identical soundcore speakers can pair with each other for stereo sound. Both speakers can play the same audio (one as the left channel and the other as the right channel).

With one speaker connected to a smartphone, press and hold the Bluetooth button for 2 seconds on two speakers to enter TWS pairing mode. In TWS pairing mode, double-press the Bluetooth button to switch between left and right stereo channels.

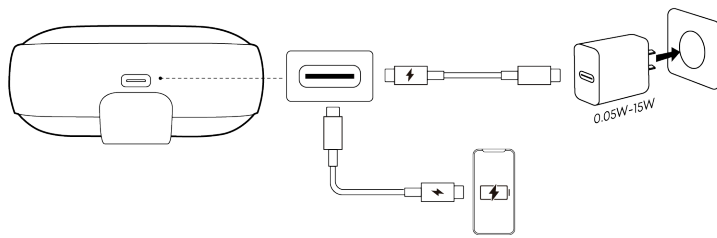
Auracast Mode

With one speaker connected to a smartphone, simultaneously press the Auracast button on multiple Boom Go 3i speakers to sync audio. A prompt sound will play when you enable or disable Auracast mode, or when multiple speakers are successfully linked together.



- To link three or more speakers, please use Auracast mode. With the upgraded Auracast feature, your speaker can pair with soundcore devices using the same Auracast protocol. It is not compatible with PartyCast-enabled devices.

Charging Your Speaker

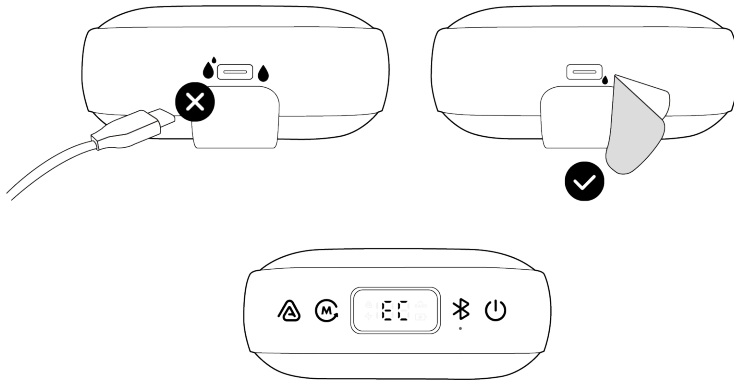


Use the provided USB-C to USB-C cable to connect the speaker and a certified charger to a power source. When charging, the LED Smart Display will show the battery level in real time.



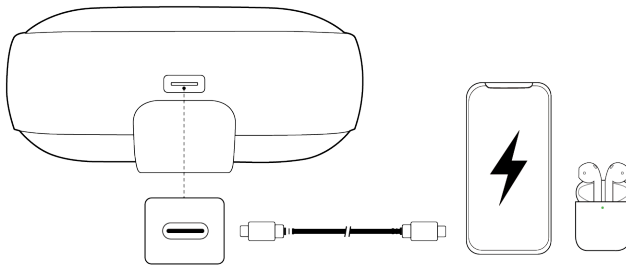
- Please use a charger with a power output of 0.05W to 15W to charge the speaker.

Charging Protection



“EC” means moisture detected in the charging port. In this case, unplug the cable immediately. Ensure both the port and the cable are completely dry before charging again.

Charging Other Devices

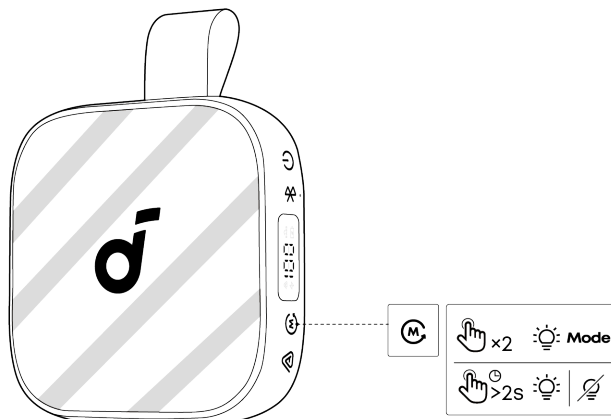


Use this speaker as a power bank to charge your portable devices or accessories. Please note that reverse charging is not available when the speaker's battery is below 10%.

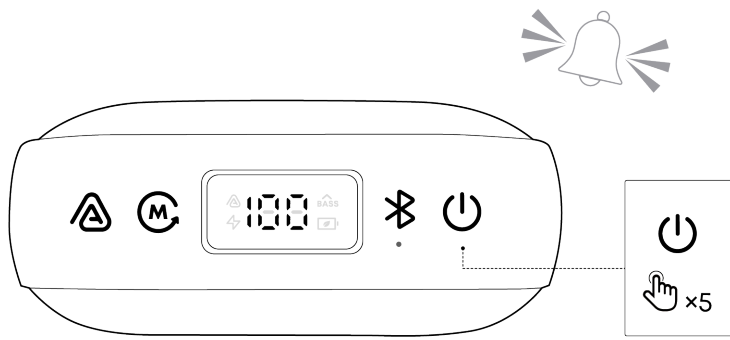
Light Show

The LED light strips change with the rhythm of the music.

Press and hold the Mode button for 2 seconds to turn on or off the light effects. When the light is on, double-press the Mode button to switch between different light effects.



Emergency Alarm



Press the power button 5 times to activate the Emergency Alarm. Press any button to turn it off.
 Caution: The alarm is very loud. Use only in real emergencies.

Button Controls

⏻	Press Once	Power On
	Press and Hold for 2 Seconds	Power Off
	Press 5 Times	Activate Emergency Alarm *Press any button on the speaker to turn off the alarm.
📶	Press Once	Enter Bluetooth Pairing Mode
	Press and Hold for 2 Seconds	Enter / Exit TWS Pairing Mode
—	Press Once	Volume Down
+	Press Once	Volume Up
▶	Press Once	Play / Pause
	Press Twice	Next Track
	Press Three Times	Previous Track
⚠️	Press Once	Enter / Exit Auracast Pairing Mode
Ⓜ️ Note: You can customize button controls in the soundcore app.	Press Once	Select from 3 Sound Modes: BassUp / Normal / Eco Mode
	Press and Hold for 2 Seconds	Turn On / Off Light Effects
	Press Twice	Switch Light Effects

soundcore App

Download the soundcore app to enhance your experience.



Google Play and the Google Play logo are trademarks of Google Inc.



Apple and the Apple logo are trademarks of Apple Inc.



Product Information: Check the product name and software version, or read the user manual.

Firmware Update: You will be informed once a new version of firmware is detected when you connect the speaker with the app.

Battery Status: Indicates the remaining battery level of your speaker.

Volume Control: Adjust the volume level via the app without pressing the buttons on the speaker.

ECO Mode: Eco mode turns off lights and BassUp, switching to a power-saving mode for longer playtime.

Equalizer: There are various preset EQ settings you can choose from in the app to optimize your experience while enjoying different music genres.

- **soundcore Signature:** Standard EQ mode optimized for well-balanced sound.
- **Treble Boost:** High frequencies are enhanced.

- **Voice:** Voices stand out more clearly from other ambient sounds.
- **Balanced:** No enhancement for high-frequency and low-frequency sounds.

Voice Amplifier: Use the app's Voice Amplifier feature to speak directly through your phone, and your voice will be amplified and played through the speaker.

White Noise: Use the recommended white noise in the app to create a soothing atmosphere for relaxation or falling asleep.

Emergency Alarm: Quickly activates an alarm to draw attention in emergencies.

Set Auto-power Off Time: The speaker will automatically power off when time is up.

Speaker Prompts: Mute or restore the device on/off and Bluetooth pairing sound.

Find Device: When the speaker is connected to the app, enable the speaker to play a sound to help you locate it.

Resetting

Press and hold the Bluetooth button and Volume Up button simultaneously for at least 6 seconds to reset the speaker.

Specifications

Power Input	5V --- 3A
Battery Capacity	4800 mAh
Audio Output Power	15 W
Speaker Driver	2.1 inches
Charging Time	4 Hours
Playtime (varies by volume level and music content)	24 Hours
Waterproof and Dustproof Rating	IP68
Bluetooth Version	6.0
Bluetooth Range	30m

Compliance Information

Hereby, Anker Innovations Limited declares that this device is in compliance with The Product Security and Telecommunications Infrastructure (Security Requirements for Relevant Connectable Products) Regulations 2023. For the Statement of Compliance, visit the website: <https://uk.soundcore.com/pages/psti-related>.

Note: The 'x' of SN Code: xxxxxxxxxxxxxxxx is a variable, see below table.

Variable 'x'	Range of variable	Content
Eighth	0-9 or A-F	Denotes the hardware version which is not effected on the safety compliance.
Ninth	8,9,A,B,C...	Denotes the year, 8 means 2018, 9 means 2019, A means 2020, B means 2021, C means 2022, and so on.
Tenth and Eleventh	01,02,03...	Denotes weeks, 01 means the first week in this year, 02 means the secondary week in this year, and so on.
Twelfth	1-7	Denotes date, 1 means Monday, 2 means Tuesday..., 7 means Sunday and so on.
The last five	00001-99999	Denotes serial No.

Default Open Port: Classic Bluetooth + BLE (Bluetooth Low Energy)

Port Description: After the device is powered on, both Classic Bluetooth visibility (or pairing mode) and BLE broadcasting are automatically enabled, providing Bluetooth pairing (or control) services. The Bluetooth service is disabled when the device is powered off.

This product does not use post-consumer recycled plastic or bio-based plastic.