

Claro

USER MANUAL

Please read this user manual carefully before using it and keep it well for future reference

CAUTIONS

- Please insert the micro SD card in the right direction to avoid damage to the card or the device. If device shows error message, please format the micro SD card from device menu. Please reset device or change micro SD card if similar error continues.
Note : All files will be deleted when formatting micro SDcard or firmware update, please backup the important files prior to that. When reset function is selected, the device will return to default setting.
- New Micro SD card must be formatted for first use.
- Ensure bracket is installed correctly & firmly on windscreen to avoid damage to device and for better recording angle.
- Please do not use product under wet environment as device is not waterproofed/water resistant.
- Please do not record or take picture facing sunlight.
- To obtain clear image, please clean windscreen and device lens regularly. Avoid using device in dusty environment.
- Handle device with care and avoid direct impact on the device. Avoid using device in high electromagnetic environment.
- Please operate the product within the temperature of -10°C~65°C. Continuous exposure to sunlight, especially when locked in cabin where temperature exceeds 65°C may result to device malfunction, colour change, housing and image distortion.

Disclaimer:

- We are not liable for any loss or damage caused or resulting from unauthorized disassembly or modification to the product.
- In no event shall we be liable for any direct, indirect, punitive, incidental, special consequential damages, to property or life, improper storage, whatsoever arising out of or connected with the use or misuse of our products.
- This device is NOT intended to be used for illegal purpose, surveillance and shall not be used in any form as evidence for claim purposes.
- Some countries prohibit drivers from mounting anything on the windshield, or restrict mounting to specific areas of the windshield. It is the owner's responsibility to mount the device in compliance with local laws.
- Error may occur depending on the surrounding environment and the voltage of the car.
- We are not liable/responsible for non-recorded event, missing files, etc.
- If the car battery voltage is lesser than the setting value of cut-off voltage, device will stop recording even at park recording mode.

STRUCTURE



1 Holder

2 MMicro SD Card Slot

3 Front Camera Lens

4 Inside Camera Lens

5 Rear Camera Input

6 Rear Camera Input

7 Rear Camera Lens

SPECIFICATION

Resolution	Front 4K(3840*2160),Inside 1K(1920*1080), Rear 2K(2560*1440)
Screen Display	3.39 inch LCD screen display
Screen Display	Front, Inside, Rear
WiFi	Option 2.4GHz WIFI
WDR/HDR/Night mode	Support
Loop Recording	Support
Parking Monitoring	Support
G-sensor	Support
Time-lapse Recording	Support
Image/Video Playback	Support
Wireless Control App	Support
Microphone & Speaker	Built-in Microphone & Speaker
File Format	Video format (MP4), photo format(JPG)
GPS	Optional (External)
Micro SD	Support up to 512GB Micro SD
Port	Type-C USB
Input Power Supply	12-24V DC input / 5V/1.5A output
Operating Temperature	-10°C~65°C
Storage Temperature	-20°C~70°C
Language	English, Chinese Simplified, Chinese Traditional, Japanese, Vietnam, Russian and Thailand

INSTALLATION

Placing the dashcam

The dashcam can be mounted on the **dashboard** or **windshield**.

On the dashboard is possible, but captures less image and is more susceptible to becoming loose. Recommended placement behind the rear view mirror: optimal view, nodistraktion and virtually invisible.



Mounting

- Make the surface free of grease and dust
- Remove the foil from the 3M adhesive strip
- Stick the holder firmly to the desired location
- Press firmly for 10 seconds
- Check the position via live image in the app

Hide the cable

For a neat finish, route the power cable along the edges of the interior.

This prevents loose cables that can obstruct the view.

- Route the cable along the windscreen towards the passenger side
- Hide the cable behind the headliner, A-pillar and dashboard
- Connect to a fuse box in the car
- Make sure the cable is not dangling or in the way anywhere

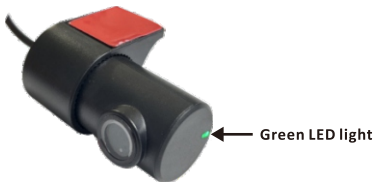
INSTALLATION

Note:

- Before sticking, make sure dashcam is flat. Do not remove it after sticking, otherwise it may not be firmly attached.
- Turn off the car engine to prevent electric shock during installation.
- Adjust the angle of the lens by the bracket of the front camera. We recommend to tilt the lens slightly downwards ($\approx 10^\circ$ below horizontal), so as to record video with a 6:4 road to background ratio.
- Adjust the lens angle by rotating the body of the rear camera. The rear camera is connected to the front camera.



- The dashcam automatically starts recording as soon as it receives power. If the rear camera does not work. Please check if the LED light of the camera is on. If the LED does not light up, it might be because the rear camera is not properly connected, then insert the wire of the rear camera into the front camera firmly to make sure it is properly connected.



CONNECT DASHCAM

Pair Dashcam with Smartphone

The distance range between the dashcam and smartphone is approximately 10 meters(33ft)in an open field environment.

Wireless Connection(Wifi)

At the beginning, enable Wi-Fi & Location on Smartphone(Refer to the instruction manual of the smartphone on how to operate Wi-fi & Location)

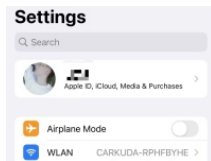
Connect via the APP

Step 1: Scan the QR code below and download the app or search **Viidure** in the App store(IOS)/Play store (Android):



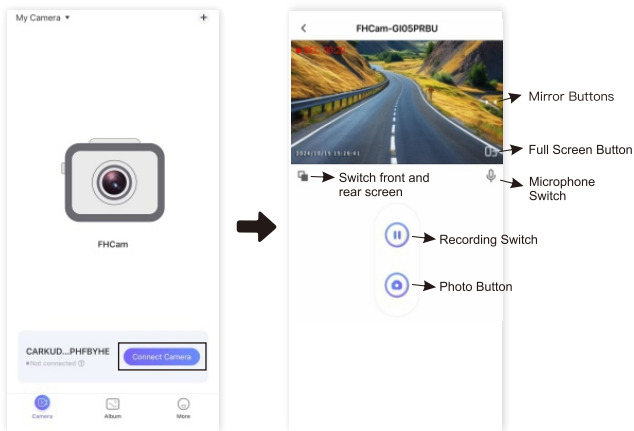
Step 2: Connect to the dashcam

- 1.Turn on WiFi of dash cam: Long press Down Button for two second to turn on the WiFi Mode.
- 2.Open your phone's WiFi setting.
- 3.Connect to the WiFi network: CLARO CL-349
- 4.Enter the password: 12345678



5. Open the app and click "Connect Camera".

6. Then go directly to settings and **format the SD card**. This is crucial for proper operation- without formatting, recordings may fail.



FUNCTIONS - DASHACM

Download Video or Photo

- Go to app recording screen to select Video or Photo gallery.

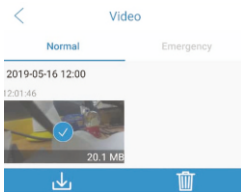


Video



Photo

- Press and hold preferred video/photo to select then press "↓" to download file.



Emergency Recording

- There will be audio alert when emergency recording started.
- The device will begin saving emergency recording when impact is detected.

Format SD Card

- All data will be deleted. Backup data to prevent unwanted files from being deleted.
- Go to Settings and Select "Format Memory Card".

Parking Monitoring

Around-the-clock protection and surveillance when the ignition switch turned off and car is parked.

Park Monitoring recording triggered by G-sensor.

Go to "⚙️" Settings and choose Parking Monitor. Next, select the preferred mode (Low / Middle / High). Press "<" Back to exit the setting menu.

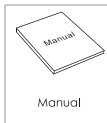
Timelapse

To record long-duration videos by compiling a series of single pictures over a period of time.

FUNCTIONS

Setting	Low Voltage Protection	Low Voltage Protection function will stop the dashcam from drawing power, when the vehicle battery voltage is below the threshold value.
	Volume	Mute/Low/Middle/High
	Factory Reset	Perform factory reset will restore the DVR to the dashcam's default settings.
	Format Memory Card	All data will be deleted. Backup data to prevent unwanted files from being deleted.
Video/ Image	Video Coding	H.264/TS
	Resolution	Front 4K(3840*2160), Inside 1K(1920*1080), Rear 2K(2560*1440)
	Loop Recording	Supported
	Parking Monitor	Supported
	Time-lapse	Supported
	G-sensor	Supported
Playback	Delete, Recorded Video/ Photo	Video & Photo

IN THE PACKAGE



This device complies with part 15 of the FCC Rules. Operation is subject to the following two conditions:
(1) This device may not cause harmful interference, and
(2) this device must accept any interference received, including interference that may cause undesired operation.

Any Changes or modifications not expressly approved by the party responsible for compliance could void the user's authority to operate the equipment.

Note: This equipment has been tested and found to comply with the limits for a Class B digital device, pursuant to part 15 of the FCC Rules. These limits are designed to provide reasonable protection against harmful interference in a residential installation. This equipment generates uses and can radiate radio frequency energy and, if not installed and used in accordance with the instructions, may cause harmful interference to radio communications. However, there is no guarantee that interference will not occur in a particular installation. If this equipment does cause harmful interference to radio or television reception, which can be determined by turning the equipment off and on, the user is encouraged to try to correct the interference by one or more of the following measures:

- Reorient or relocate the receiving antenna.
- Increase the separation between the equipment and receiver.
- Connect the equipment into an outlet on a circuit different from that to which the receiver is connected.
- Consult the dealer or an experienced radio/TV technician for help.

This equipment complies with FCC radiation exposure limits set forth for an uncontrolled environment. This equipment should be installed and operated with minimum distance 20cm between the radiator & your body.