

# UBM2 User Guide

## Table of Contents

1. Introduction .....	2
1.1 Module Features .....	2
1.2 Interface Definition .....	3
2. Test Setup Details .....	4
3. Application Usage .....	5
3.1 Tx Application Usage .....	5
4. FCC Statement .....	8
5, Integration instructions for host product manufacturers according to KDB 996369 D03 OEM Manual v01r01 .....	9



# 1. Introduction

The purpose of this document is to provide the usage of the applications for transmit and receive tests to evaluate the RF performance of the UBM2 using a test driver in windows environment. The evaluation board provides the necessary connectors so that you can measure transmit, using Spectrum Analyzer and Signal Generator.

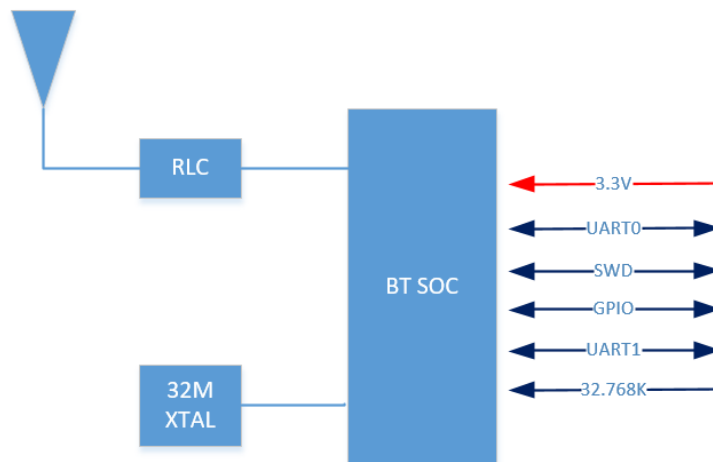
In general, transmit performance of a radio can be analyzed in three steps.

**Maximum power:** The user can observe the RF output power for a given maximum gain supported by the RF.

The document contains three major sections.

Section 3.1 describes the usage of the 'BT transmit' utility, which provides the options for setting various parameters to carry out transmit tests on the UBM2 device.

This UBM2 module is a single-mode, low-cost BLE5.1 Bluetooth module. It features transparent transmission, active, passive, and master-slave integrated modes, and is suitable for most Bluetooth application scenarios. It is also compatible with on-board antennas and position antennas, and the actual application can be selected according to product requirements.



Block diagram of the UBM2 system

## 1.1 Module Features

### Processor

- ARM Cortex-M4 32-bit processor.
- The maximum main frequency can reach up to 64MHz.

### Memory

- 512KB Flash: Support XIP to run code or save user data.
- 64KB Data SRAM: Code can be run or variables saved
- 8KB Code Cache: Used for Flash XIP code caching

### RF Performance

The module integrates a high-performance 2.4GHz RF transceiver that meets the requirements of Bluetooth RF. The features are as follows:

- Working frequency: 2.4G~2.4835GHz
- Modulation mode: GFSK
- Transmission rate: 1Mbps/2Mbps
- Transmission power: -20~9dBm Adjustable
- Receiving sensitivity: -95.5dBm@1Mbps/-93dBm@2Mbps
- Built-in Balun circuit, supporting single-ended RFIO output

### Power Consumption

- Power supply: 3.3V
- Transmission mode: 6.4mA@0dBm Tx power
- Receiving mode: 7.4mA
- Sleep mode: 6.3uA@32K RTC runs and all SRAM contents remain
- OFF mode: 0.8 uA

### Oscillator

- Support 32M XTAL

### Peripheral interface

- 2-way UART interface
- 2-way SPI interface
- PWM
- SWD debugging
- Size: L26.0±0.2mm \*W13 ±0.2mm\*H1.9±0.5mm MAX

## 1.2 Interface Definition

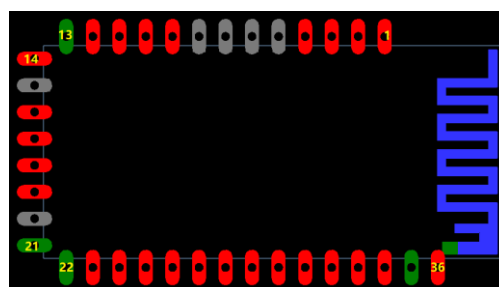


Figure 2 Module pin diagram

Pin number	Pin name	Type	Pin function
1	P09/UART1_TX	I/O	UART_TXD
2	P10/UART1_RX	I/O	UART_RX
3	P20	I/O	General input and output
4	P21	I/O	General input and output
5	NC	/	Reserved

6	NC	/	Reserved
7	NC	/	Reserved
8	NC	/	Reserved
9	P11/Tran	I/O	General input and output
10	P12/Disc	I/O	General input and output
11	RST_N	I/O	Reset signal input, level valid
12	VDD33	I/O	3.3V power input
13	GND	P	Ground
14	P04/BOOT	P	Low level for Programming mode.
15	NC	/	Reserved
16	P00/SWCLK	I/O	SWD debug CLK input
17	P01/SWDIO	I/O	SWD debug data input
18	P05/UART0_TX	O	Output in programming mode.
19	P06/UART0_RX	I	Input pin in programming mode.
20	NC	/	Reserved
21	GND	P	Ground
22	GND	P	Ground
23	XTAL32K_OUT	O	32.768KHz Crystal oscillator output
24	XTAL32K_IN	I	32.768KHz Crystal oscillator input
25	P27	I/O	General input and output
26	P26	I/O	General input and output
27	P03	I/O	General input and output
28	P25	I/O	General input and output
29	P24	I/O	General input and output
30	P07	I/O	General input and output
31	P08	I/O	General input and output
32	P23	I/O	General input and output
33	P02	I/O	General input and output
34	P22	I/O	General input and output
35	GND	P	Ground
36	ANT	I/O	RF Port

## 2. Test Setup Details

The diagram shown below, illustrates the test setup for transmit performance of UBM2 module.

As shown in the test setup, the UBM2 evaluation board (EVB) is connect to pc via UART. The board is connected to a signal analyzer through a microwave coaxial cable to test the Tx or Rx performance.

### Figure 1: Based RF Evaluation Setup Interface

Following diagram illustrates various software components involved in performing Tx and Rx tests using spectrum analyzer and signal generator respectively.



The 'transmit' utility is a command line application to perform Tx tests. Before running the Tx tests, the user is expected to connect UBM2 module to a signal analyzer using the RF cable.

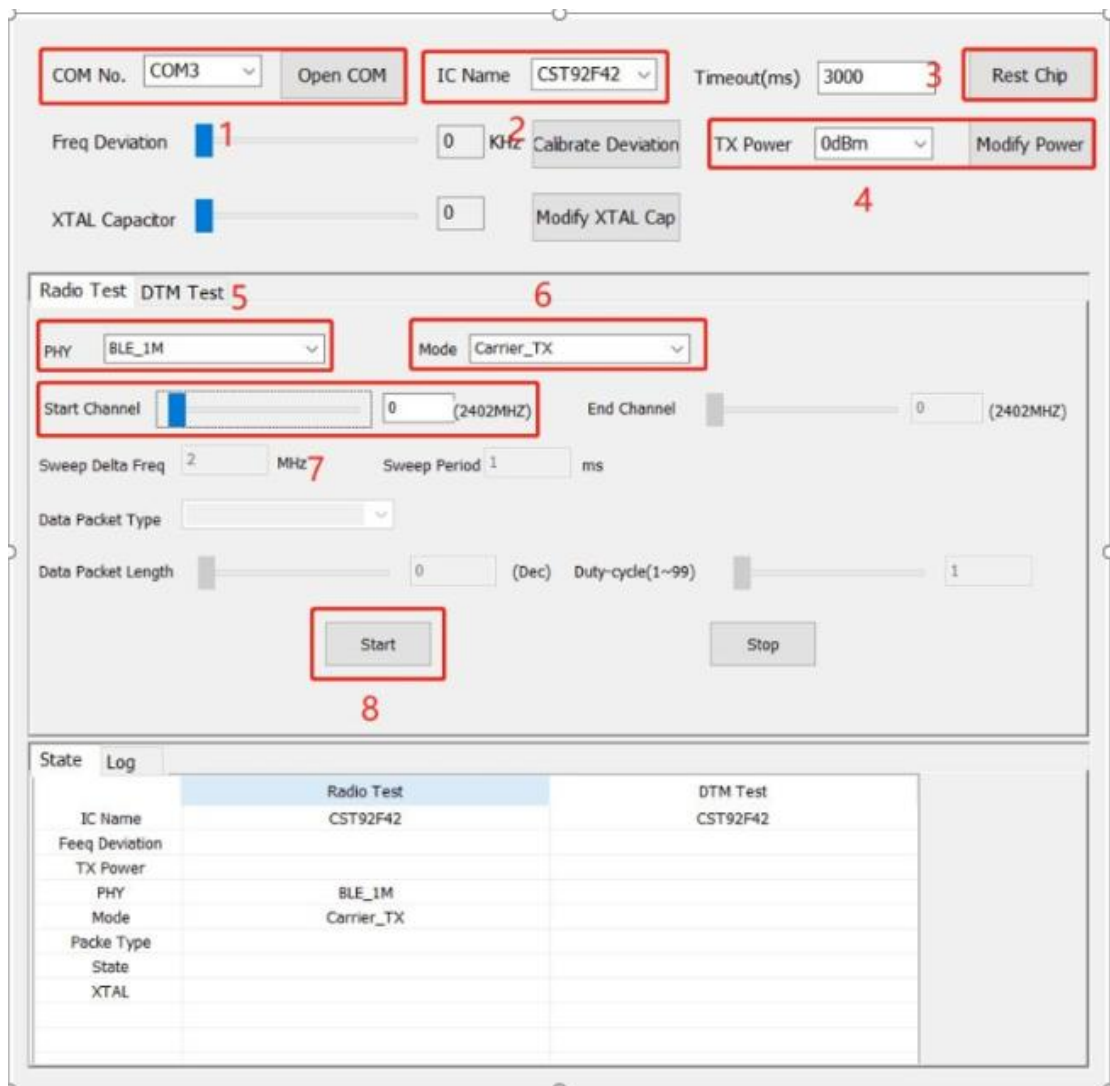
The 'receive' utility is also a separate command line application that can be used for displaying statistics on the received packets while carrying out the receive sensitivity tests.

## 3. Application Usage

### 3.1 Tx Application Usage

The application can be started in the following steps:  
plug UART EVB into the device and laptop, check the laptop's UART number and set up the serial port tool Portland, send the command via UART tools.

- 1、 Singel tone test



### Power on module

1. Select the COM port
2. Select chip ID
3. Rest Chip
4. Select TX Power (default is 0 dBm)
5. Select PHY rate
6. Select test mode
7. Set the test channel
8. Start

### 2、 TX power test

The screenshot shows a software interface for radio testing. At the top, there are fields for 'COM No.' (set to COM3), 'IC Name' (set to CST92F42), and 'Timeout(ms)' (set to 3000). Below these are sliders for 'Freq Deviation' and 'XTAL Capacitor', and buttons for 'Open COM', 'Calibrate Deviation', 'Rest Chip', 'TX Power' (set to 0dBm), and 'Modify Power'. The main section is divided into 'Radio Test' and 'DTM Test' tabs. Under 'Radio Test', there are dropdowns for 'PHY' (set to BLE\_1M) and 'Mode' (set to Modulated\_TX). Below these are sliders for 'Start Channel' and 'End Channel' (both set to 0), and input fields for 'Sweep Delta Freq' (2 MHz) and 'Sweep Period' (1 ms). There is also a dropdown for 'Data Packet Type' (set to Random Sequence Data) and sliders for 'Data Packet Length' and 'Duty-cycle(1~99)'. A 'Start' button is highlighted with a red box. At the bottom, there is a 'State Log' table.

State	Log
IC Name	Radio Test CST92F42
Freq Deviation	DTM Test CST92F42
TX Power	
PHY	BLE_1M
Mode	Modulated_carrier_TX
Packet Type	Random Sequence Data
State	
XTAL	

Power on module

1. Select the COM port
2. Select chip ID
3. Rest Chip
4. Select TX Power (default is 0 dBm)
5. Select PHY rate
6. Select test mode
7. Set the test channel
8. Select the data packet Type
9. Start

## 4. FCC Statement

This Module complies with part 15 of the FCC rules. Operation is subject to the following two conditions: (1) this module may not cause harmful interference, and (2) this module must accept any interference received, including interference that may cause undesired operation.

Changes or modifications not expressly approved by the party responsible for compliance could void the user's authority to operate the equipment.

NOTE: This equipment has been tested and found to comply with the limits for a Class B digital device, pursuant to part 15 of the FCC Rules. These limits are designed to provide reasonable protection against harmful interference in a residential installation. This equipment generates uses and can radiate radio frequency energy and, if not installed and used in accordance with the instructions, may cause harmful interference to radio communications. However, there is no guarantee that interference will not occur in a particular installation. If this equipment does cause harmful interference to radio or television reception, which can be determined by turning the equipment off and on, the user is encouraged to try to correct the interference by one or more of the following measures:

- Reorient or relocate the receiving antenna.
- Increase the separation between the equipment and receiver.
- Connect the equipment into an outlet on a circuit different from that to which the receiver is connected.
- Consult the dealer or an experienced radio/TV technician for help important announcement

### **Radiation Exposure Statement**

The module has been evaluated to meet general RF exposure requirement. The device can be used in portable exposure condition without restriction.

# 5, Integration instructions for host product manufacturers according to KDB 996369 D03 OEM Manual v01r01

## 5.1 List of applicable FCC rules

CFR 47 FCC PART 15 SUBPART C(§15.247) is applicable to this modular transmitter.

## 5.2 Specific operational use conditions

There are no specific operational use conditions for the module.

## 5.3 Limited module procedures

The module has no own RF shielding and has been granted a limited modular approval (LMA). As grantee of the EDAN INSTRUMENTS, INC is responsible for approving the host environment that the module is used with. Thus, the host manufacturer must observe the following procedure to ensure host compliance:

- a). EDAN INSTRUMENTS, INC must review and release the host environment prior to giving the host manufacturer approval.
- b). The module is to be installed by trained and qualified personnel only.
- c). The host integrator installing the module must ensure that the final composite product complies with the FCC requirements by a technical assessment or evaluation to the FCC rules.
- d). A Class II Permissive Change is required for each specific host installation.

## 5.4 Trace antenna designs

N/A

## 5.5 RF exposure considerations

The modular is approved for portable use and is permit to installed in host device with following RF exposure conditions, these RF exposure conditions must be stated in the end-product manual(s) of the host device manufacturer clearly:

- Portable - 0cm from a person's body
- Mobile - Greater than 20cm from a person's body

However, When the module is used in any other way it is granted, such as portable to mobile or with other transmitters simultaneously, requires additional evaluation/testing and Class 2 permissive change.

## 5.6 antenna

This module has been approved by Federal Communications Commission to operate with the antenna types listed below, with the maximum permissible gain indicated. The antenna is permanently fixed. It cannot be replaced.

Model Name	Frequency Band	Type	Peak Gain (dBi)
2.4 ANT	2400-2500MHz	PCB antenna	1.1 dBi

## 5.7 Label and compliance information

The final-end product must be labeled in a visible area with the following" Contains FCC ID: SMQIM3 "

## 5.8 Information on test modes and additional testing requirements



The designated C2PC test plan is as follows:

- a) Testing should be done by an FCC recognized testing Laboratory and tests are based on C63.10-2020;
- b) Host manufacturer should contact the module manufacturer for access to test mode software for configuring transmit channel and modulation.
- c) Measure the Maximum Peak Output Power according to §15.247(b)(3) on Channel 00/19/39 and modulation (1&2Mbps).
- d) Measure Radiated spurious emission from 9kHz to 25GHz according to §15.209 on Channel 00/19/39 and modulation (1Mbps).
- e) Measure Radiated Band-edge according to §15.205&§15.209 on Channel 00/39 and modulation (1Mbps).
- f) Measure AC power conducted emissions according to §15.207 in the case the host device is designed to be connected to the public utility (AC) power line.

Note 1: If the C2PC investigation indicates that the module's conducted power has increased from the original filing test report, the manufacturer, lab, and TCB must investigate to determine if the initial module tested in a standalone module was improperly granted. The module may require a new FCC ID. An inquiry can be submitted to review a specific case, but the C2PC can only be given once the issue is resolved.

Note 2: An increase in measured field strength over the module's tested field strength is the result of host installation, such as signal reflections, and this increased field strength value remains compliant with the rules. In that case, a statement is required in the C2PC test report, such as "An increase in measured field strength over the original tested field strength has been investigated and determined to be due to host installation."

Note 3: Any radiated emission that does not comply with regulations must be corrected, and the C2PC can only be granted once the issue is resolved.

## **5.9 Additional testing, Part 15 Subpart B disclaimer**

The modular transmitter is only FCC authorized for the specific rule parts (FCC part 15.247) listed on the grant, If the final host product contains unintentional-radiator digital circuitry, the final host product still requires Part 15 Subpart B compliance testing with the modular transmitter installed.

## **5.10 Note EMI Considerations**

The host product shall be evaluated for ensuring the continuous compliance for the FCC rules that apply to the host product. The testing should check for emissions that may occur due to the intermixing of emissions with the other transmitters, digital circuitry, or due to physical properties of the host product(enclosure). Additional guidance for testing host products is provided in KDB Publication 996369 D02 and D04 (For standalone mode, reference the guidance in D04 Module Integration Guide and for simultaneous mode, see D02 Module Q&A Question 12, which permits the host manufacturer to confirm compliance).

## **5.11 How to make changes**

Only module Grantee are permitted to make permissive changes, Please contact us for further process at:

Contact Name: EDAN INSTRUMENTS, INC.

Phone: 0755-26682547

Website: [www.edan.com.cn](http://www.edan.com.cn)

E-mail: [xiahuanhuan@edan.com.cn](mailto:xiahuanhuan@edan.com.cn)<sup>14</sup>

Address: #15 Jinhui Road, Jinsha Community, Kengzi Sub-District, Pingshan District, 518122 Shenzhen P.R.China