

# User Manual

## Robot Vacuum and Mop

**Dear users:**

Thank you for purchasing Narwal products. To access comprehensive support from Narwal, you are recommended to read carefully the manual and illustrations before using the product. Please keep the manual properly.  
In case of any problem in using the product, please contact Narwal after-sales customer service through the following ways:

Merci d'avoir acheté les produits Narwal. Pour bénéficier d'un support complet de la part de Narwal, nous vous recommandons de lire attentivement le manuel et les illustrations avant d'utiliser le produit. Veuillez conserver le manuel correctement.  
En cas de problème lors de l'utilisation du produit, veuillez contacter le service client après-vente Narwal par les moyens suivants :  
support.na@global.narwal.com(North America)

\*For other countries, please refer to the after-sales contact information provided by your local vendors.

We wish you a pleasant experience!

# CONTENTS

en



**Regional Availability and Compatibility**

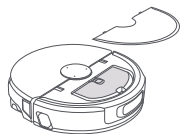
Based on user experience consideration and relevant legal and compliant requirements, Narwal products normally sold by Narwal (and its authorized retailers) are only available for use and after-sales service support in the country or region in which they were originally sold. If a product is shipped to any other countries or regions, you might not be able to use the Narwal App to bind the product or perform relevant operations. We recommend that you purchase the local version of the Narwal product from Narwal or its authorized retailers in order to obtain the best product use and service experience.

For avoidance of doubt, Narwal products sold by Narwal (and its authorized retailers) in the PRC are only available for use and after-sales service support in the PRC (for this purpose, excluding Hong Kong, Macao and Taiwan).

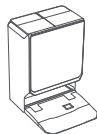
# 1. Product at a Glance

## 1.1 Packaging Contents

### Main Body

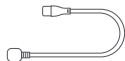


Robot × 1  
(Pre-installed with Dust Bin × 1  
and Track Mopping Module × 1)



Self-cleaning Charging Dock × 1  
(Including Cleaning Base × 1, Clean Water Tank × 1,  
Dirty Water Tank × 1, Cleaning Solution Reservoir × 1,  
Dust Bag × 1, Replaceable Cleaning Filter × 1)

### Accessories



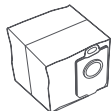
Power Cord × 1



Anti-tangling Side Brush × 1



Dust Bin Filter × 1



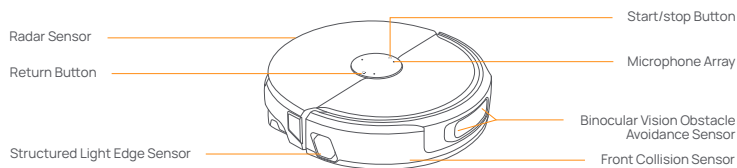
Dust Bag × 1



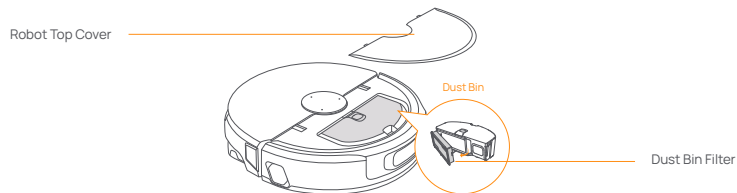
Cleaning Solution × 1

## 1.2 Robot Components

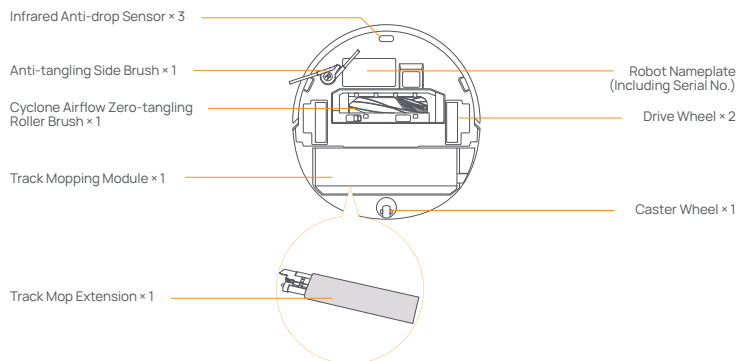
### Robot (Front View with Top Cover Closed)



### Robot (Front View with Top Cover Opened)

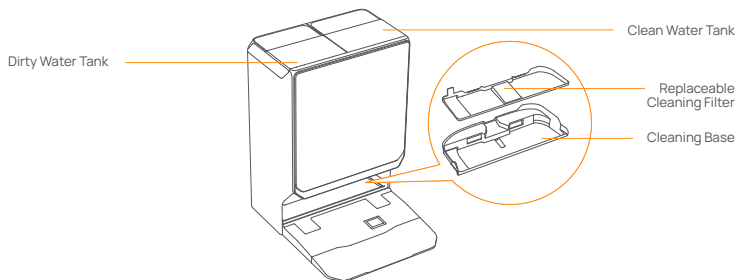


### Robot (Bottom View)

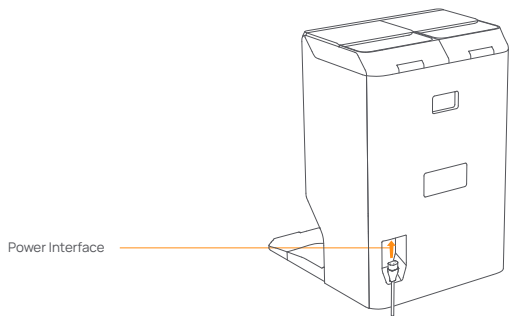


### 1.3 Self-cleaning Charging Dock Components

#### Front of Self-cleaning Charging Dock



#### Rear of Self-cleaning Charging Dock



### 1.4 Buttons and Lighting Effects

#### Robot Buttons

Button	Operation	Function
Start/stop ⏻	Short press	Start/pause/resume cleaning task
	Long press for 2 seconds	Power on/off; end task
	Long press for 10 seconds	Force power off
	Triple press	Enable/disable child lock
Return ⏪	Short press	Return robot to self-cleaning charging dock
	Long press for 5 seconds and then release	Enter pairing status
	Long press for 15 seconds	Reset system firmware and erase all user data

#### Robot Indicator Effects

Lighting Effects	Status
White	Idling status/Standby mode
Blue	Task status/Navo voice response status
Red	Abnormalities
Orange	Pairing status/Updating status

#### Indicators of the Self-cleaning Charging Dock

Lighting Effects	Status
Off	Idling status
Solid on	Task status/Night light mode
Flashing + solid on	Task completed/Mode switched
Flashing	Abnormalities
Flowing	Robot powered on
Flowing + flashing	Voice interaction while robot is at the charging dock

## 2. Preparation before Using

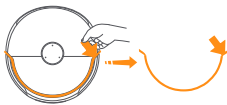
### (1) Install the Side Brush

Firmly press the side brush into its slot until you hear a "click", indicating secure installation.



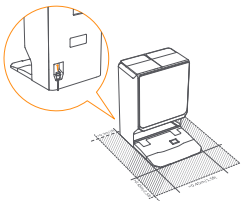
### (2) Remove Protective Foam Strips

- Lift the top cover guide sticker, open the robot's top cover, and remove the protective foam strips.
- Close the top cover.



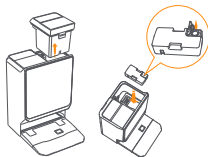
### (3) Position the Self-cleaning Charging Dock

- Plug the power cord into the rear power port of the charging dock and connect it to a power outlet.
  - Ensure a clear space of at least 0.45 m in front of the charging dock for the robot to enter and exit freely.
- Reminder: Do not place the charging dock near heat sources.



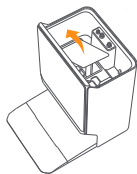
### (4) Add Cleaning Solution

- Open the top cover of the charging dock and remove the clean water tank. Take out the integrated cleaning solution reservoir, open its lid, and manually fill it with cleaning solution.
  - After filling, securely close the reservoir lid and reinsert it into the designated slot inside the dock.
- Reminder: Use only official Narwal cleaning solution to avoid machine malfunction.

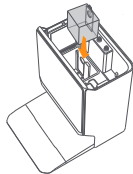


### (5) Base Station Dust Bag Installation

- Remove the clean water tank and dirty water tank
- Lift the dust cabinet cover upward



- Insert a new dust bag into the slot following the illustrated orientation, ensuring it is fully seated at the bottom of the slot
- Close the dust cabinet cover and reinstall the clean water tank and dirty water tank into their original positions



### (6) Install the Silver Ion Antibacterial Module

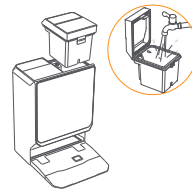
Install the silver ion antibacterial module into the bottom snap-fit slot of the clean water tank, following the orientation as illustrated. The module is properly installed when it no longer wobbles.

Reminder: The silver ion antibacterial module must be purchased separately.



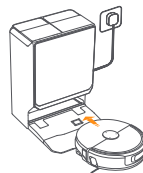
### (7) Fill with Clean Water

- Open the clean water tank latch and fill it with clean water
- Securely close the tank lid and place the tank back into the self-cleaning charging dock.



### (8) First-time Robot Power-on

Ensure the side brush and camera face outward. Push the robot into the charging dock. When correctly aligned, the charging dock's indicator light will stay solid for 3s. After approx. 10 seconds, the robot will power on automatically.



### (9) Connect and Bind the Robot Via the App

Download the Narwal App and follow the instructions for connecting and binding the robot.

Note: In the App device page, tap "Settings" > "Device" and then press hold the "Restart Robot" for 10s to turn on/off the power-saving mode.

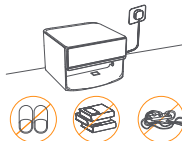
—The power-saving mode is only available in North America.



## 3. Product Usage

Before using, ensure you have completed robot setup and self-cleaning charging dock configuration as described in Section 2.

### 3.1 Organize the home environment



A. Remove loose items from the floor, such as cables, rags, slippers, clothing, books, and other clutter.



B. Open doors to areas to be cleaned and arrange furniture to maximize accessible floor space.



C. Close doors to rooms that do not require cleaning. Use physical barriers to prevent the robot from entering elevated or low-clearance areas.



D. The robot can overcome single-step thresholds up to 30 mm in height. For thresholds exceeding 30 mm, we recommend using the Narwal Threshold Ramp (sold separately) to assist obstacle crossing.



E. Avoid standing directly in front of the robot, near thresholds, or in narrow corridors during cleaning to prevent missed spots.

## 3.2 Map Creation

Prior to the first cleaning, you can initiate mapping by: Saying the voice command “Start mapping”, or tapping “Start mapping” in the app, or short pressing the robot’s Start/stop button (which will automatically trigger mapping followed by cleaning).

Precautions

1. After mapping is complete, you can edit and manage the map in the app, such as setting unreachable areas, or creating secondary maps for multi-floor homes.
2. Do not move the self-cleaning charging dock after mapping, as this will require remapping. If large furniture has been relocated, remapping is recommended.

## 3.3 Cleaning

Ensure the robot has sufficient battery before starting a cleaning task. Battery level can be checked in the app.

### Select Cleaning Mode

The robot supports four cleaning modes: Vacuum Only, Mop Only, Vacuum & Mop Simultaneously, Vacuum First, Then Mop. In the app, you can customize each mode by adjusting number of cleaning passes, suction power, mop moisture level, etc.

### Enable Freo Mind

Freo Mind is a smart cleaning function. When enabled, it automatically optimizes cleaning parameters, eliminating the need for manual adjustments.

You can choose to enable Freo Mind when starting a cleaning task in the app.

### Start a Cleaning Task

You can start cleaning via the app or by:

- Short pressing the Start/stop button on the robot. By default, the robot will start in Vacuum Only mode.

Note: You can adjust the cleaning mode and parameters in the app.

Do not touch the sides of the mop module while the robot is operating.

## Pause/Resume Task

Pause or resume cleaning via the app or by:

- Short pressing the Start/stop button on the robot.

## Dust Emptying of the Self-cleaning Charging Dock

After a vacuuming task begins, the self-cleaning charging dock automatically transfers debris from the robot’s dust cabinet into the charging dock’s dust bag.

You can also manually trigger dust emptying via the app.

## Mop Washing

If multiple mopping passes are scheduled or the cleaning area is large, the robot will automatically return to the charging dock to wash its mop during the task.

Mopping cycle and mop-washing frequency can be adjusted in the app before starting the task. These settings cannot be changed once cleaning has begun. You can also manually start a mop-washing task via the app or by:

Note: Do not forcibly pull the robot out during automatic mop washing, as this may damage components.

## End Task

Upon completion, the robot automatically returns to the self-cleaning charging dock. A cleaning report is available in the app.

You can also manually end the task via the app or by:

- Short pressing the Return button;
- Long pressing the Start/stop button for 2s.

## Drying

After the final mopping pass, the robot returns to the self-cleaning charging dock to wash and dry the mop, and dry the dust cabinet.

Drying settings can be customized in the app, and you can also manually start a drying task.

## 3.4 Component Maintenance

You can view component maintenance information in the app, including usage duration, maintenance intervals, and replacement instructions for each component.

## 3.5 Additional Features

### Advanced Features

You can learn how to use the intelligent assistant via the app.

### Special Features

During cleaning, the robot performs real-time self-cleaning of the mop, actively untangles hair from the side brush, and extends the mop outward for enhanced edge cleaning. The self-cleaning charging dock offers multi-level hot water mop washing function.

### Convenient Functions

In the app, you can configure no-go zones, child lock, do not disturb mode, and stairless mode (enhancing obstacle-crossing performance).

## 3.6 User Guide

You can access user guide in the app, including tutorial videos, the digital user manual, FAQs, and troubleshooting.

## 4. Parameters

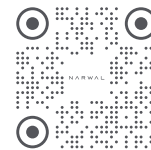
### 4.1 Specifications

<b>Robot (YJCC036)</b>	<b>Base Station (YJCB036BH)</b>
Dimensions: 351.2*363.5*95 mm	Dimensions: 450*360*530 mm
Weight: 5.0 kg	Weight: 10 kg
Wireless Connection: 2.4GHz, 802.11b/g/n	Rated input: AC 220-240V 50-60Hz AC 100-127V 50-60Hz (The actual rated input is based on the product nameplate information.)
Rated input (charging): 8-17.8V --- 0.2-3.5A	
Rated power: 65W (Max)	Rated output: 8-17.8V --- 0.2-3.5A
Rated voltage (working): 14.4V --- (lithium ion battery, ≥6500mAh)	Rated power: Charging: 65W Water heating: 1200W Dust Collection: 450W Drying: 110W
Charging takes about 3 hours at a normal ambient temperature	
<b>Wi-Fi</b>	Inlet Water Pressure: 0.08-0.8 MPA (The new hose-sets supplied with the appliance are to be used and that old hose-sets should not be reused.)
Protocol: IEEE 802.11b/g/n	
Frequency Range: 2412-2472MHz	
Max. Transmitter Power (EIRP): ≤20dBm	
<b>Bluetooth</b>	<b>Bluetooth</b>
Protocol: BLE 5.0	Protocol: BLE 5.0
Frequency Range: 2402-2480MHz	Frequency Range: 2402-2480MHz
Max. Transmitter Power (EIRP): ≤10dBm	Max. Transmitter Power (EIRP): ≤10dBm

<b>Battery (Robot)</b>	
Battery Pack Quantity Per Pack:	1 pcs
Battery Type:	Rechargeable Li-ion Battery
Nominal Voltage:	14.4V ---
Quantity of Battery Cells Per Battery Pack:	8 pcs
Rated Capacity, Rated Energy:	6500mAh, 22.75Wh

**Manufacturer/Fabricant : Yunjing Intelligence Innovation (Shenzhen) Co., Ltd.**

Address/Adresse : Room A2901, Yunzhongcheng, Building 1, Vanke Yuncheng VI, Dashi 2nd Road, Xili Community, Xili Street, Nanshan District, Shenzhen, Guangdong, China



[WWW.NARWAL.COM](http://WWW.NARWAL.COM)

Copyright © 2025 Yunjing Intelligence Innovation (Shenzhen) Co., Ltd. All Rights Reserved.  
NARWAL is a trademark of Yunjing Intelligence Innovation (Shenzhen) Co., Ltd.

Droits d'auteur © 2025 Yunjing Intelligence Innovation (Shenzhen) Co., Ltd. Tous droits réservés.  
NARWAL est une marque de commerce de Yunjing Intelligence Innovation (Shenzhen) Co., Ltd.