

# FlySync Lite USB Dongle User Manual

## 1. Overview

The FlySync Lite USB Dongle, launched by Collins Aerospace, is a lightweight device that integrates USB flash drive storage and wireless data transfer capabilities, designed specifically for Electronic Flight Bags (EFBs) and mobile office scenarios. It can function as a standard USB flash drive for data storage, or it can transfer files from its database unit to the EFB via its built-in Wi-Fi hotspot, eliminating the need for an external network.



## 2. Features

- Dual-function design: Supports both USB flash drive storage mode and wireless hotspot transmission mode.
- Manual transfer mechanism: Users can choose which files to send via the accompanying software.
- USB 2.0 interface, plug and play.
- 802.11b/g/n wireless standard, stable transmission on the 2.4GHz band.
- 16GB built-in storage, meeting basic data storage and transmission needs.
- USB powered, no external power supply required.
- Low power consumption design, rated power consumption of only 1.5W.
- Supports batch transfer between multiple devices, improving work efficiency.
- WPA2 encryption, ensuring data transmission security.
- IP54 protection rating, adaptable to various working environments.
- FCC certified, compliant with international standards.

### 3. Hardware Specifications

Item	Parameter
Product Name	USB Dongle
Product Model	FlySync Lite
Color	Black
Shell material	ABS plastic
Storage capacity	16GB
Wireless standards	802.11b/g/n (2.4GHz)
Wireless transmission rate	802.11n up to 150 Mbps
USB interface	USB 2.0
Power supply	USB powered
Rated power consumption	1.5W
Dimension	84 × 26 × 13 mm
Weight	20g

### 4. Functions and performance

Functional Classification	Item	Directions
<b>Storage function</b>	USB flash drive mode	Simply plug it into your computer and it will function as a standard USB flash drive, supporting file read and write operations.
	File system	Supports FAT32 format
	Hot-swap	Support
<b>Transmission function</b>	Transmission mode	After inserting a database cell and selecting the file using the accompanying software, FlySync Lite automatically creates a Wi-Fi hotspot.
	Connection method	After the Electronic Flight Bag (EFB) connects to the FlySync Lite hotspot, it automatically receives and transfers files.
	Batch transfer	Supports multiple EFB connections to receive files simultaneously.
	Data security	Supports WPA2 encryption
	Compatible systems	PC, MAC, iOS
	Transmission distance	In open environments, it can reach 30 meters.
	Automatic synchronization	Once the file is selected, it will be automatically pushed to all EFBs.
	Supported devices	DBU-5000, etc.

## 5. Usage Environment

Item	Parameter
Operating temperature	0°C to 65°C
Storage temperature	-20°C to 70°C (recommended)
Protection level	IP54 (dustproof, splashproof)

## 6. Packaging and Accessories

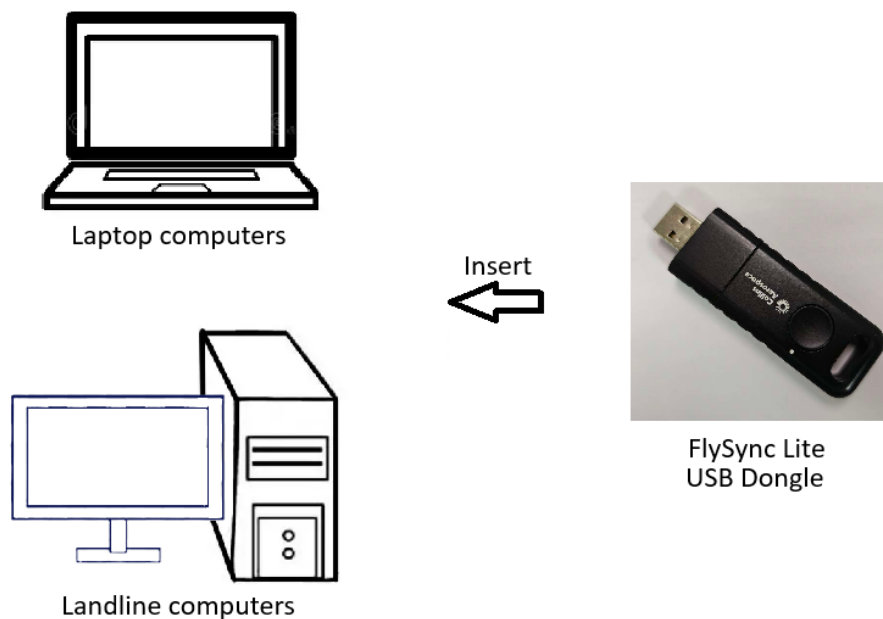
Item	content
Packaging contents	FlySync Lite × 1
	User Manual × 1
Authentication information	FCC

## 7. Application scenarios

**Flight data synchronization to the electronic flight bag (EFB):** Rapidly distribute flight data to the flight deck from an electronic flight bag (EFB).



## Standard USB flash drive for everyday storage



## 8. Operating Instructions

### 8.1 Wireless transmission mode

#### 8.1.1 Sending end operations

- Insert FlySync Lite into the USB port of the Data Base Unit.
- Open the accompanying transfer software
- Select the file or folder to be transferred.
- Click "Start Transfer," and FlySync Lite will automatically create an encrypted Wi-Fi hotspot.

#### 8.1.2 Receiver operation:

- Search for Wi-Fi networks on EFB
- Connect to the Wi-Fi hotspot created by FlySync Lite (name and password can be found on the product label).
- After a successful connection, the file will be automatically transferred to EFB.
- Supports simultaneous connections from multiple EFBs, with files synchronously pushed to all receiving ends.

### **8.1.3 Transmission complete**

- a) After the transfer is complete, disconnect the Wi-Fi connection from FlySync Lite on the EFB.
- b) Unplug FlySync Lite from the Data Base Unit.

## **8.2 USB flash drive mode**

- a) Plug the FlySync Lite into the computer's USB port.
- b) The system automatically recognizes it as a removable disk.
- c) Files can be copied, pasted, and deleted directly.

## **9. Precautions**

- a) Do not use in environments with high temperature, high humidity, or strong electromagnetic interference for extended periods.
- b) Ensure good contact of the USB interface during use and avoid frequent plugging and unplugging.
- c) Wireless transmission distance is affected by the environment. It is recommended to keep EFB as close as possible to FlySync Lite and avoid obstruction when using it.
- d) This product does not support 5GHz band wireless networks.
- e) In transmission mode, please ensure that the device has sufficient power to avoid transmission interruption.
- f) For first-time users, it is recommended to install the accompanying software for full functionality support.

## **10. FCC Caution:**

This device complies with part 15 of the FCC Rules. Operation is subject to the following two conditions: (1) This device may not cause harmful interference, and (2) this device must accept any interference received, including interference that may cause undesired operation.

Any changes or modifications not expressly approved by the party responsible for compliance could void the user's authority to operate the equipment.

Note: This equipment has been tested and found to comply with the limits for a Class B digital device, pursuant to part 15 of the FCC Rules. These limits are designed to provide reasonable protection against harmful interference in a residential installation. This equipment generates, uses and can radiate radio frequency energy and, if not installed and used in accordance with the instructions, may cause harmful interference to radio communications. However, there is no guarantee that interference will not occur in a particular installation. If this equipment does cause harmful interference to radio or

television reception, which can be determined by turning the equipment off and on, the user is encouraged to try to correct the interference by one or more of the following measures:

- Reorient or relocate the receiving antenna.
- Increase the separation between the equipment and receiver.
- Connect the equipment into an outlet on a circuit different from that to which the receiver is connected.
- Consult the dealer or an experienced radio/TV technician for help.

The device has been evaluated to meet general RF exposure requirement. The device can be used in the exposure condition without restriction. The device has been evaluated to meet general RF exposure requirement. The device can be used in the exposure condition without restriction.

## **11. Contact information**

For technical support or after-sales service, please contact:

Official Website: [www.flysync.com](http://www.flysync.com)

Customer service email: [support@flysync.com](mailto:support@flysync.com)

Service Hotline: 400-xxx-xxxx