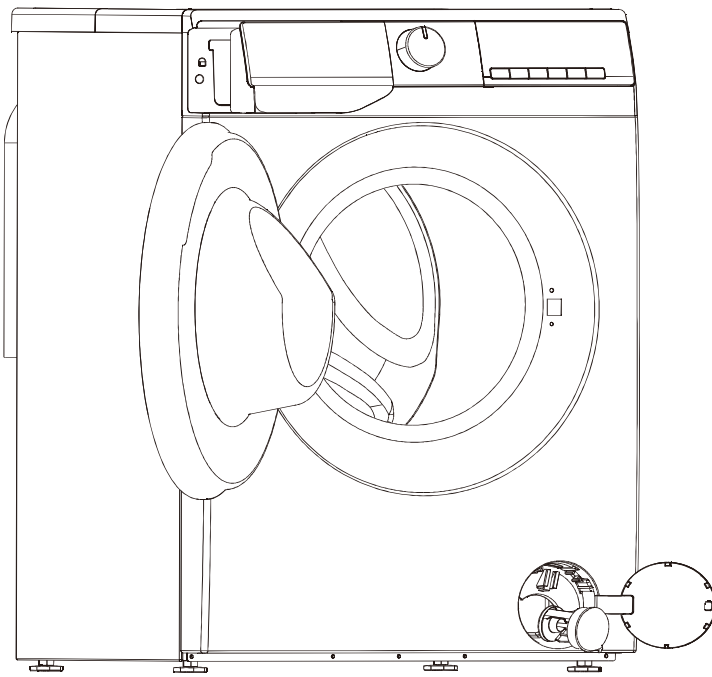


EN

**USER' S
OPERATION
MANUAL**

gorenje




www.gorenje.com

Thank you very much for choosing our company's products.

- Please correctly install and use this product, and do not use this product to wash clothes that are not suitable for machine washing.
- The images in the manual are for illustration purposes only. The appearance, printing, etc. shall be subject to the actual product.
- Our company emphasizes technology updates. In order to enhance the overall performance of this appliance, we will make technical changes to it without further notice. Your understanding is appreciated.
- This product is for household use only.

The following symbols in this manual are indicated as follows:

 Information, suggestions, prompts, or advice

 WARNING - GENERAL HAZARD

 WARNING - ELECTRIC SHOCK HAZARD

 WARNING - BURN HAZARD

 WARNING - FIRE HAZARD



Please read the user manual carefully.

CONTENTS

<p>4 SAFETY PRECAUTIONS</p> <p>.....</p> <p>10 PRODUCT DESCRIPTION 11 Specifications</p>	<p>INTRODUCTION</p>
<p>12 INSTALLATION AND CONNECTION 12 Packing/Packaging 14 Removing the transport screws 15 Installation location 15 Adjustable feet 15 Installation clearance 16 Connecting to water supply 19 Connecting and securing the drain hose 20 Connecting to the power mains 21 Transportation after installation</p> <p>.....</p> <p>22 BEFORE THE FIRST USE</p>	<p>PREPARATION BEFORE FIRST USE</p>
<p>26 PROGRAMS AND FUNCTIONS 27 Program table 29 Additional settings and functions 33 Start the program 33 End of the program</p> <p>.....</p> <p>34 PROGRAM INTERRUPTIONS AND CHANGES</p> <p>.....</p> <p>35 MAINTENANCE AND CLEANING 35 Cleaning the detergent drawer 36 Cleaning the water inlet hose, detergent drawer outer compartment, and rubber door gasket 37 Cleaning the pump filter 38 Cleaning the inlet filter 38 Cleaning the outside of your washer</p>	<p>WASHING STEPS</p> <p>CLEANING AND MAINTENANCE</p>
<p>39 TROUBLESHOOTING 42 FAULT CODES AND TROUBLESHOOTING 43 SERVICING</p> <p>.....</p>	<p>TROUBLE- SHOOTING</p>
<p>43 USAGE RECOMMENDATIONS 44 RECOMMENDATIONS FOR SPECIFIC STAIN REMOVAL 46 DISPOSAL 47 TYPICAL CONSUMPTION TABLE</p>	<p>MISCELLANE- OUS</p>

SAFETY PRECAUTIONS



Please read the manual carefully before using this appliance.

Do not use this appliance if you have not read or understood this manual.

This manual is applicable to multiple models. Therefore, this manual may contain functions not covered by this model.

Failure to follow the instructions or improper operation may damage clothing or the appliance, or cause injury to you. Please place the manual near the appliance for easy access.

This appliance is intended to be used in household and similar applications such as:

- staff kitchen areas in shops, offices and other working environments
- farm houses;
- by clients in hotels, motels and other residential type environments;
- bed and breakfast type environments;
- areas for communal use in blocks of flats or in launderettes.

If the appliance is used for professional, for-profit purpose or purpose exceeding normal use in a household and similar applications, or if the appliance is used by a person who is not a consumer, the warranty period shall be equal to the shortest warranty period required by relevant legislation.

This appliance is not intended for use by persons (including children) with reduced physical, sensory or mental capabilities, or lack of experience and knowledge, unless they have been given supervision or instruction concerning use of the appliance by a person responsible for their safety.

Children should be supervised to ensure that they do not play with the appliance.

Children of less than 3 years should be kept away unless continuously supervised.

This appliance can be used by children aged from 8 years and above and persons with reduced physical, sensory or mental capabilities or lack of experience and knowledge if they have been given supervision or instruction concerning use of the appliance in a safe way and understand the hazards involved.

Children shall not play with the appliance. Cleaning and user maintenance shall not be made by children without supervision.

The maximum capacity in some cycles for dry clothes to be used is:
Wash (8kg) /Dry (5kg) .

The recommended maximum capacity may vary among different programs. For best results, see "PROGRAM TABLE".

To connect the appliance to water supply, make sure to use the supplied water supply hose and gaskets. Water pressure has to be between 0.1-1 MPa (1-10 bar; 1-10 kp/cm²;10-100 N/cm²).

Always use a new water supply hose to connect the appliance to water supply, do not reuse an old water supply hose.

For appliances with ventilation openings in the base, the ventilation openings must not be obstructed by a carpet.

If the supply cord is damaged, it must be replaced by the manufacturer, its service agent or similarly qualified persons in order to avoid a hazard.

ELECTRICAL SAFETY

This appliance complies with relevant safety standards.

Before connecting the appliance to the power supply, please wait at least 2 hours to ensure it reaches room temperature.

This appliance must be repaired by an authorized service center, and only spare parts recognized by the authorized manufacturer shall be used.

Any repairs and maintenance related to safety or performance should be conducted by trained professionals.

Do not attempt to repair this appliance yourself. Repairs by unprofessional personnel may cause personal injury or more serious malfunctions. Please consult your local service center and always use original spare parts.

Do not attempt to operate the appliance if it is damaged, malfunctioning, partially disassembled, or has missing or damaged parts, including damaged wires or plugs.

Do not bend the power cord excessively or place heavy objects on it.

Do not spray water to clean inside or outside the device.

In case of flooding, please disconnect the power plug and contact the after-sales service center.

Models with drying functions have automatic heating device shutdown protection to prevent overheating. If the temperature exceeds the protection temperature, the system will automatically shut down the heating device, and when the temperature drops below the protection temperature, the heating device will resume operation.

Do not use multiple outlets, extended power cords, or dual adapters on the appliance. Do not use an extended cord to connect the appliance to the power supply.

Do not connect the appliance to the electrical socket of an electric shaver or hair dryer.

Do not connect the appliance to an electrical outlet specifically designed for low-load appliances.

Before connecting the appliance to the power supply, ensure that the electric voltage specified on the rating plate matches the Voltage of your socket.

The power socket must be safely grounded, and the water supply must remain unobstructed.

Do not connect the appliance to the power supply with an external switching appliance (such as a program timer) or connect it to a power supply that is turned on and off regularly by the power supplier.

The exhaust gas must not be discharged into the flue used to discharge combustion gases or other fuel exhaust gases.

INSTALLATION

Before using the appliance, be sure to remove the packaging (sponge, polystyrene foam, etc.) attached to the bottom of the appliance.

Please install the appliance correctly according to the instructions and connect the water and electricity (see "INSTALLATION AND CONNECTION"). The connection of water and electricity should be carried out by fully trained technicians or professionals.

Do not install this appliance in places where door opening is restricted.

Do not install the appliance in an area where the temperature may drop to 5°C below, otherwise, the parts may be damaged when water freezes.

Place the appliance on a sturdy flat surface. If the appliance is installed on a high platform, it must be secured to prevent it from tipping over.

The end of the drain hose should be placed in the drainage system.

This appliance must not be stored or used in any outdoor locations.

Avoid lint accumulation near the appliance.

Do not install the appliance near heaters or any flammable items.

Do not install the appliance in locations where gas leakage may occur.

Please ensure good ventilation conditions to avoid the gas generated by this appliance from flowing back into the room, thereby causing a fire.

USAGE

Before the first use, remove the transport screws; Otherwise, serious damage may occur when the machine is turned on (see "INSTALLATION AND CONNECTION/REMOVAL OF TRANSPORT BOLTS"). Such damage is not covered under warranty.

Inspect the appliance to see if it has been damaged during transportation. Never operate the appliance in a damaged condition.

Use detergents suitable for the appliance cleaning and clothes washing. We are not responsible for damage or discoloration of seals and plastic parts caused by the use of bleach or dyes.

Do not attempt to separate any panels or disassemble the appliance.

Do not use sharp objects like pins, knives, or fingernails to press the button.

Do not use wet hands to touch the power plug or operate the appliance.

This appliance is only suitable for ordinary washing or drying of clothes (models with drying function), not for dry cleaning.

Because the appliance is heavy, you may injure yourself trying to lift it. Do not lift the appliance yourself; your hands may be cut by its sharp edges.

Do not grasp the appliance by its protruding parts. The protruding parts on the appliance may break when lifting or pushing the appliance.

Do not wash clothes with large buttons or other heavy metal items. Make sure all the pockets in the laundry are empty. To prevent odors and mildew, open the door after the wash cycle ends and let the drum air dry.

Do not leave metal objects in the drum for a long time.

The door glass may break due to strong impact, so be careful when using the appliance.

Place the laundry completely inside the drum so that the clothes will not be caught by the door.


When the appliance is not in use, turn off the water supply and unplug the power cord from the power socket.

Do not put animals (such as pets) into the appliance.

TRANSPORTATION/TRANSPORT AFTER INSTALLATION


If you plan to move the installed appliance, install the transport screws (See "INSTALLATION AND CONNECTION/MOVING AND TRANSPORTING AFTER INSTALLATION"). Before installing the transport screws, unplug the power plug!

After the washing program ends, turn off the tap and unplug the power plug. Never unplug an appliance by pulling on the power cord. Always firmly grasp the power plug and pull it directly out from the socket.

 **DO NOT USE DETERGENTS CONTAINING SOLVENTS, AS THESE MAY RELEASE TOXIC GASES, DAMAGE THE APPLIANCE, AND CAUSE FIRE OR EXPLOSION HAZARDS.**

Do not force the door open while the appliance is in operation (high temperature washing/dehydrating).

Do not use the appliance after cleaning with industrial chemicals.

 The wastewater discharged during high-temperature washing is hot, so do not touch it to prevent burns.

Clothes stained with substances such as cooking oil, acetone, alcohol, gasoline, kerosene, stain removers, turpentine, wax and wax removers should be washed first with hot water and plenty of detergent, then washed in the drum.

Use softeners or similar products according to the instructions for use with the softener.

Please remove all items from the garment pocket, such as lighters and matches.

BURN HAZARD

The door may become hot during washing and drying. Be careful to avoid burns. Do not let children play near the door. Do not touch the door glass during the operation of the appliance.

WATER LEAKAGE PROTECTION (while the appliance is on)

If the water level in the appliance exceeds the normal level, the water level protection function will be activated. This function will stop the water supply and start draining. The current program is interrupted and an error message is reported.

Do not wash or dry items such as foam rubber (latex foam), shower caps, waterproof fabrics, rubber products, clothes with foam rubber pads, or pillows in the drum.

WARNING

If your appliance has a drying function, do not stop the program before the drying cycle ends. If you need to interrupt the program for any reason, carefully remove the clothes to avoid burns. Quickly remove the clothes and spread them out to cool down quickly.

CHILD SAFETY

Before you close the appliance door and run the program, please ensure that there is only clothing in the drum. Make sure that no children climb into the appliance and close the door from the inside.

Do not let the appliance door stay open. Children may hang on the door or climb inside the appliance, causing damage or injury.

Keep all packaging materials in a place out of the reach of children, as these may be dangerous.

Keep detergent and softener out of the reach of children.

SERVICING

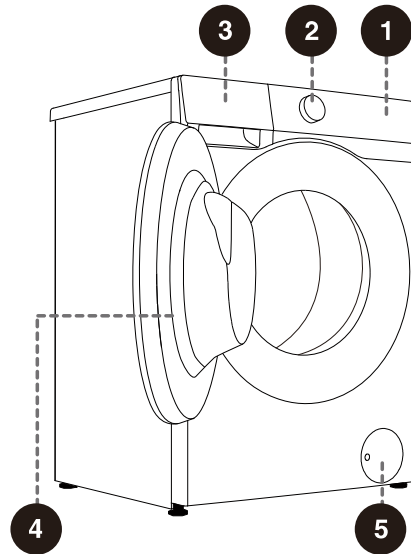
The user shall be responsible for the maintenance cost of damage caused by improper connection, improper installation and use, or repair by unauthorized personnel, as such damage is not included in the warranty.

The warranty does not include consumables, slight color deviations, increased noise due to device aging (which does not affect the functionality of the device), and cosmetic defects of parts (which do not affect the functionality and safety of the device).

PRODUCT DESCRIPTION

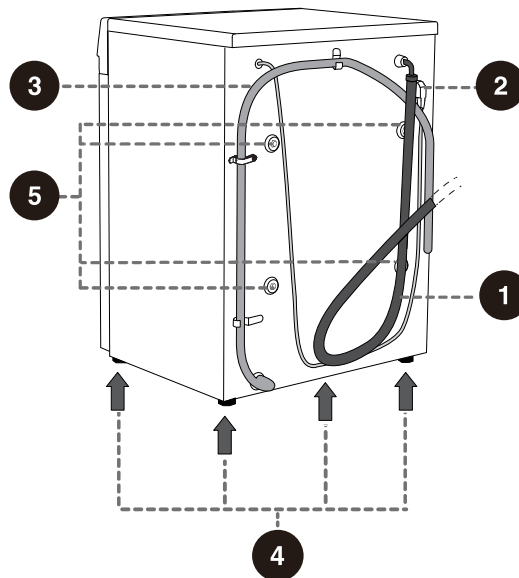
FRONT


- 1 Control panel
- 2 Knob
- 3 Detergent drawer
- 4 Door
- 5 Drain pump filter door cover



BACK

- 1 Water inlet hose
- 2 Power cord
- 3 Drain hose
- 4 Adjustable feet
- 5 Transport screw



 The illustrations in this manual are for demonstration purposes only. Due to product improvements and series expansion, the product appearance, color, and functional components you receive may differ from the illustrations in this manual. Please refer to the actual product.

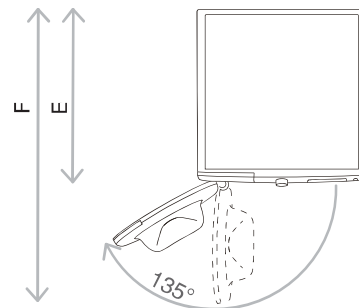
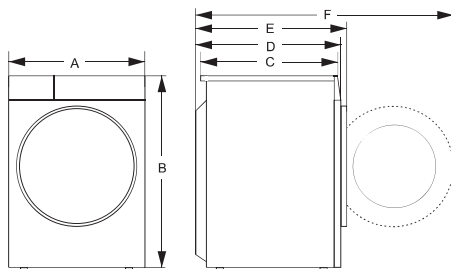
SPECIFICATIONS

(depending on the model)

Maximum washing load/ drying load	8 kg/5 kg
Net weight	61 kg
Rated voltage	220-240V~
Frequency	50 Hz
Rated power/drying power	1600 W/1050 W

DIMENSIONS (MM)

Index	Dimensions (mm)
A	595
B	845
C	460
D	510
E	540
F	1000

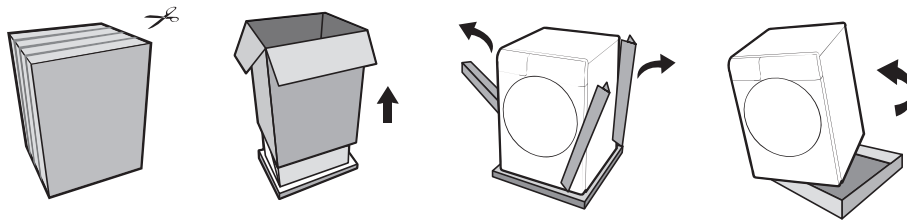


E = Appliance depth
F = Depth with door open

INSTALLATION AND CONNECTION

PACKING/PACKAGING

💡 Please first remove all the packaging and foam, especially the foam base. When unpacking the device, please do not use sharp objects to damage it. Keep packaging materials (plastic bags, other plastic parts, etc.) out of reach of children.



💡 The process of packing the machine is just the opposite of unpacking above.

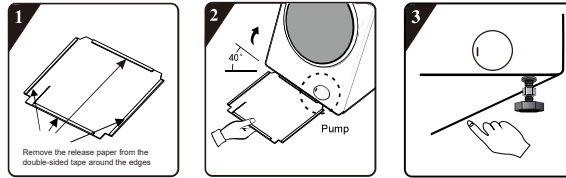
💡 Please check the device for any damage. If damaged, do not use it, and immediately contact after-sales service.

The accessories included with this appliance include one or more of the following:

- User Manual;
- 4 transport screw covers;
- Water inlet hose;
- Water drain hose bracket;
- Wrench;
- Noise reduction board/sponge strip/none (subject to the actual model).

Different models have different configurations, and the accessories included with this device are subject to the actual configuration of the model.

INSTALLATION METHOD OF THE NOISE REDUCTION BOARD:

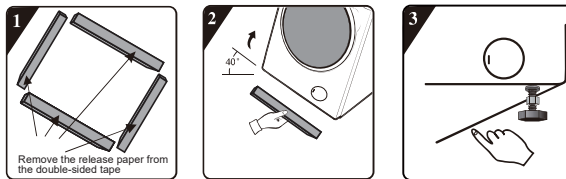


1 Peel off the release paper from the double-sided tape around the bottom cover.

2 Tilt the appliance at a 40° angle, with the right-angle notch facing the front of the appliance as shown in the illustration. Insert the oblique-angle notch between the two foot screws at the rear of the appliance until fully inserted. Close the bottom panel so that it fits tightly against the bottom of the appliance.

3 Use your hand to press the double-sided tape around the edges firmly, ensuring the noise reduction board is securely attached to the appliance body.

INSTALLATION METHOD OF THE SPONGE STRIPS:




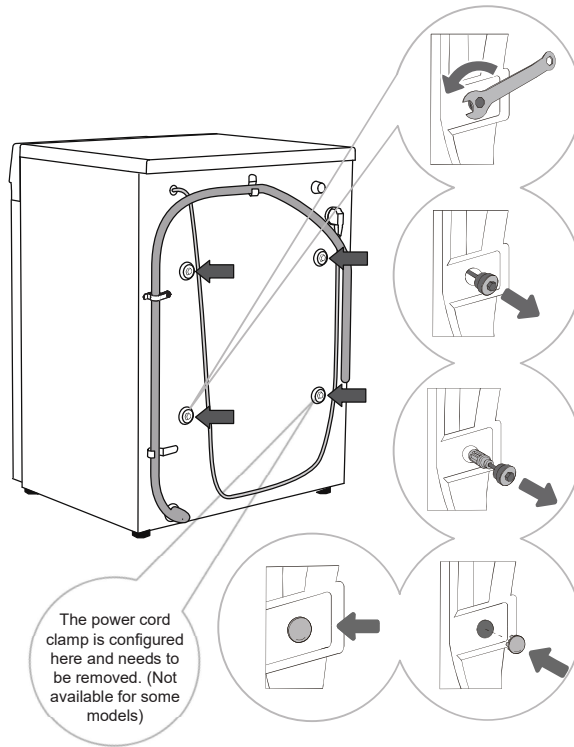
1 Peel off the release paper from the double-sided tape on the sponge strips.

2 Tilt the appliance at a 40° angle, stick 2 long sponge strips on the front and rear support positions at the bottom of the appliance body, and stick 2 short sponge strips on the left and right support positions.

3 Use your hand to press and firmly attach the sponge strips.

REMOVING THE TRANSPORT SCREWS

 After removing all packaging, remove the transport screws. Otherwise, this equipment may be damaged during use. Such damage is not covered under warranty.




1 Place the drain hose aside. Using a suitable wrench to loosen the 4 screws on the back by turning counterclockwise in the direction indicated by the arrows. Loosen each screw by approximately 30 mm.

2 Pull out the 4 transport screws horizontally.

3 Horizontally pull out the transport screws together with the rubber and plastic parts.

4 Use transport screw covers to cover the screw holes. (Transport screw covers and instruction manual are included in the supplied accessories.)

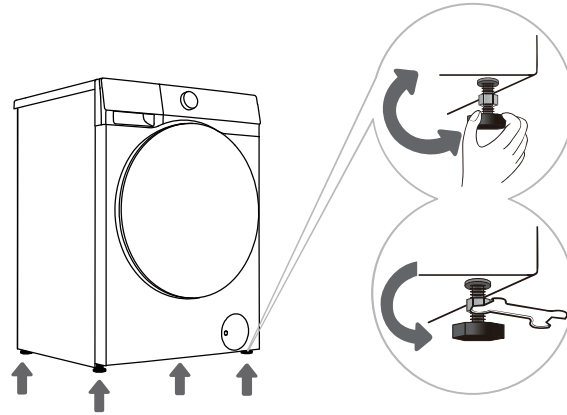
 Please keep the transport screws for future transportation. If reinstallation of the transport screws is required, follow the above steps in reverse order.

INSTALLATION LOCATION

⚠ Please place the appliance on a solid surface and keep it steady. The flat surface should be kept clean and dry; otherwise, the appliance may slip. Also, clean the bottom of the adjustable feet.

ADJUSTABLE FEET

Use a spirit level and a suitable wrench.



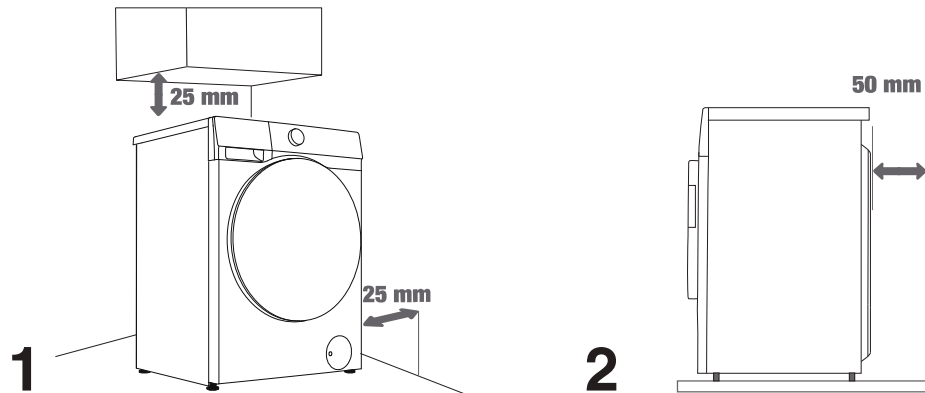
1 Adjust the level by rotating the adjustable feet. The adjustable feet allows for 2 cm of level adjustment.

2 After adjusting the height, tighten the lock nut anticlockwise using a suitable wrench (see the figure).

⚠ If the equipment is not placed steadily, it may cause vibration, sliding, and noise. The damage caused by improper level adjustment is not covered by the warranty.

⚠ During appliance operation, abnormal or noisy sounds may occur, which are mainly caused by improper installation.

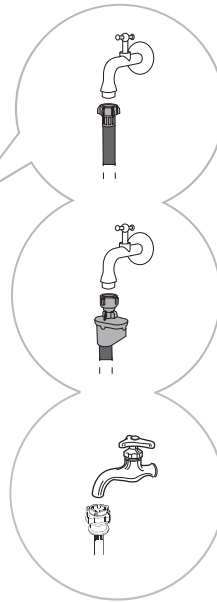
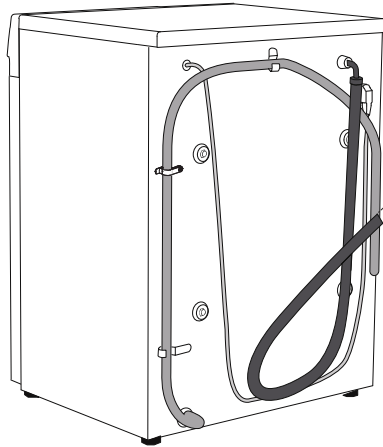
INSTALLATION CLEARANCE



⚠ Space should be left between the appliance and the walls or furniture. To ensure optimal operation of the appliance, leave some clearance on all sides as shown in the figure. Failure to maintain the minimum required clearance may result in safety hazards, abnormal operation. Overheating may also occur (Figures 1 and 2).

CONNECTING TO WATER SUPPLY

Different models have different water inlet hoses. Connect the inlet hose to the tap properly according to the actual hose.



A European water inlet hose connection

B AquaStop connection

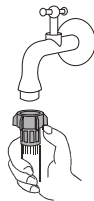
C Chinese water inlet hose connection

- 💡 To ensure normal operation, the inlet water pressure must be between 0.1-1 MPa (1-10 bar, 1-10 kp/cm², 10-100 N/cm²). The minimum dynamic water pressure can be determined by measuring the water flow. Open the tap fully and 3 liters of water should flow out within 15 seconds.
- 💡 Use the new water hose that comes with the appliance. Do not use old water hoses or other water hoses.
- 💡 Ensure the water hoses are not damaged. If the water hose is aged, brittle or cracked, it must be replaced.
- 💡 The appliance can only be connected to a cold water inlet and cannot be connected to a hot water inlet.

EUROPEAN WATER INLET HOSE CONNECTION

Gently tighten the water hose by hand to ensure a good seal (maximum torque: 2 Nm). Check whether there is any water leakage at the seal.

Do not use pliers or similar tools to avoid damaging the threads of the nut.



AQUASTOP CONNECTION

If the internal pipes or water hoses are damaged, the shutdown system will be automatically activated to cut off the water supply to the appliance. In this case, the control window (a) will turn red. Please replace the water pipes.



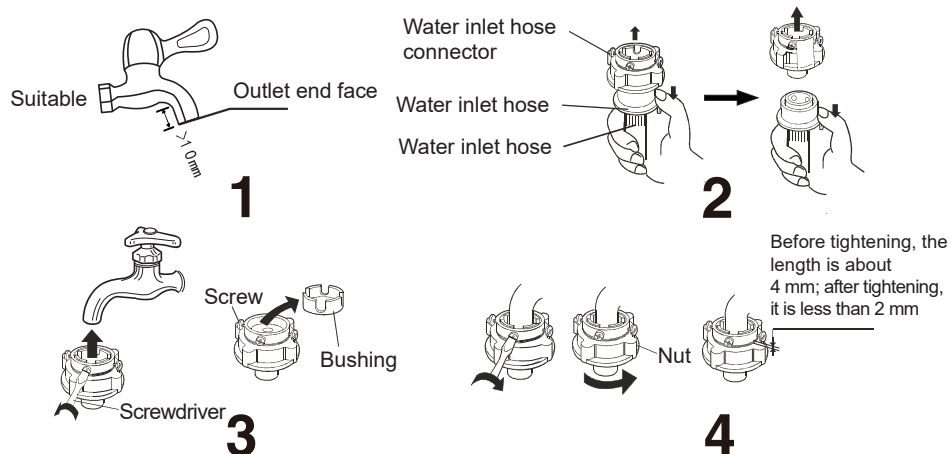
-💡- The AquaStop system contains an electric valve; therefore, do not immerse the water hose equipped with the AquaStop system in water.

-💡- The water hose can also be connected without using a check valve.

CHINESE WATER INLET HOSE CONNECTION

1. Select a suitable water tap; the front end length of the water tap must be greater than 10 mm. The outlet end face must be kept flat. If it is uneven, file it flat with a file to prevent water leakage after installation, as shown in Figure 1.
2. Push the slider downward to detach the water inlet hose connector from the water inlet assembly, as shown in Figure 2.
3. Loosen the 4 screws on the water inlet hose connector, then connect the water inlet hose connector to the water tap (if the water tap diameter is too large and cannot connect to the water inlet hose connector, loosen the 4 screws and remove the bushing), as shown in Figure 3.
4. Evenly tighten the 4 screws on the water inlet hose connector, then tighten the nuts, as shown in Figure 4.
5. If the appliance is to be used once or multiple times within a week, push down the slider and do not disassemble the water inlet hose connector to prevent damage to the fixing screws.

-💡- Note: The exposed thread length before tightening the fastening nut is approximately 4 mm; after tightening, the exposed thread length is less than 2 mm, as shown in Figure 4.



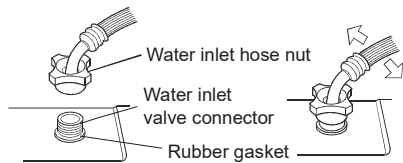
CHECK THE CONNECTION BETWEEN THE WATER INLET HOSE AND THE WATER TAP

1. Gently pull the water inlet hose to check if the connection is secure.
2. Open the water tap to check for any leaks.
3. The water inlet hose should be free of twists and bends.
4. Before each use, check the water inlet hose connection to prevent improper connection.



CONNECTION BETWEEN THE WATER INLET HOSE AND THE APPLIANCE

Connect the water inlet hose nut to the appliance water inlet valve connector, tighten the nut, and gently shake it to check if it is tightened, as shown in the right figure.

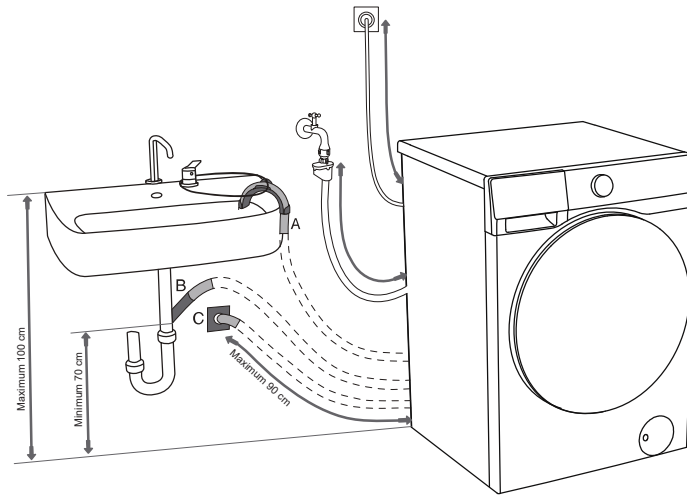


 Note:

1. Tighten evenly and do not screw into the water inlet hose, otherwise the water inlet hose joint will be damaged.
2. Do not remove the rubber gasket. Check whether the rubber gasket is detached or damaged every time you use the appliance. If there is any damage, contact after-sales immediately.

CONNECTING AND SECURING THE DRAIN HOSE

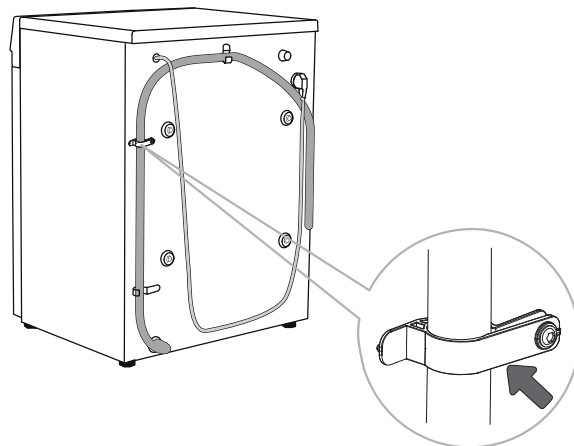
Put the drain hose into the washbasin or bathtub, or connect it directly to the drain outlet (the minimum diameter of the drain hose is 4 cm). The vertical distance of the drain hose from the ground is 70-100 cm. There are three ways to connect the drain hose (A, B, C).



A Put the end of the drain hose into the sink or bathtub. Use cable ties to secure the drain hose through the elbow bracket to prevent it from slipping.

B Place the drain hose directly into the sink drain outlet. Do not use a small sink. Note that the drained water may be hot.

C Connect the drain hose to the drain outlet on the wall with the water storage bend, and install it correctly for cleaning.



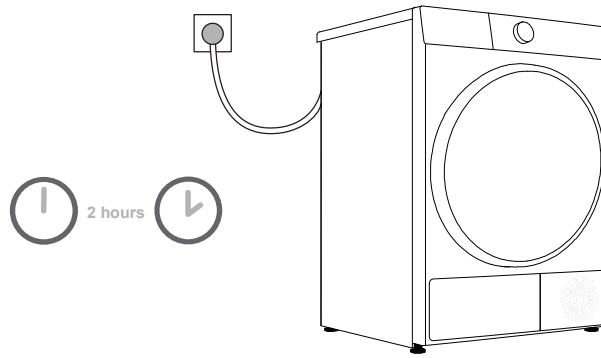
D The drain hose must be fixed to the hose clamp on the back of the appliance as shown.


⚠ The hose clamp is not allowed to be removed, otherwise, it will cause improper washing.

💡 Make sure the drain hose is not damaged.

💡 Failure to properly install the drain hose may result in safety hazards or abnormal operation.

CONNECTING TO POWER MAINS



 **Before connecting the appliance to the power supply, please wait at least 2 hours to ensure it reaches room temperature.**


This appliance is connected to a grounded power socket, and there should be no obstructions between the appliance and the socket. The power socket should have compliant grounding protection. For basic information about the appliance, please refer to the nameplate.

 **It is recommended to use overvoltage protection devices to protect this appliance from lightning strikes.**

 Do not use an extension cord to connect the appliance to the power supply.


 Do not connect the appliance to a power outlet designated for light-load appliances.

 Please do not plug or unplug the appliance with wet hands.

 The repair and maintenance of this appliance should be handled by professionally trained personnel.


 Only personnel authorized by the manufacturer can replace a damaged power cord.


TRANSPORTATION AFTER INSTALLATION


 If you need to transport an installed device, first unplug the power plug, turn off the tap, remove the water inlet and drain hoses, and make sure the detergent box and door are closed properly.

Be sure to reinstall the transport screws to prevent vibrations during transport from damaging the device (see "INSTALLATION AND CONNECTION/REMOVING THE TRANSPORT SCREWS/RODS"). If you accidentally lose the transport screws, you can order them from the manufacturer.

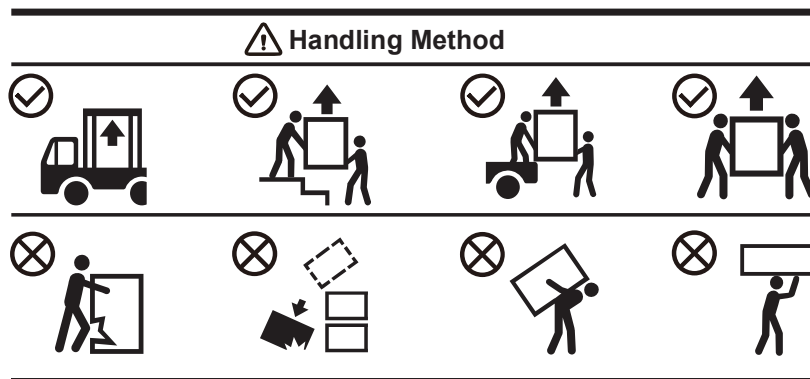
Pack all packaging materials (plastic bags, other plastic parts, etc.).

 The device is heavy. Please use at least two people to move it. When transporting, do not hold protruding parts such as the door, top cover, etc., to prevent them from falling off or being damaged.

 After transport, let the device sit for at least 2 hours before connecting it to the power supply. The device should be installed and connected by trained technicians.

 Please read the instructions carefully before reconnecting the device. Damage caused by improper connection or use is not covered by the warranty.

Transport and Handling Method




BEFORE THE FIRST USE











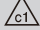















THE FIRST USE

The appliance has been tested before leaving the factory, and there may be a small amount of water residue. It is recommended to run the "Drum Clean" (or other high-temperature) program before use to clean the residual water in the drum.

- Connect the power and turn on the tap. Do not put clothes in the drum. Select and start the program.

 Do not use solvents or cleaning agents that may damage the appliance (please follow the recommendations and warnings provided by the cleaning agent manufacturer).

PAY ATTENTION TO CLOTHING LABELS



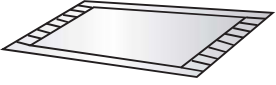


Washing	Maximum water temperature 95°C  	Maximum water temperature 60°C  	Maximum water temperature 40°C  	Maximum water temperature 30°C  	Hand wash only 	Do not wash 
Rinsing	Rinse in cold water 			Do not rinse 		
Dry cleaning	It can be dry cleaned. No restrictions on detergent 	Dry clean with petroleum solvent R11 and R113 	Dry clean with kerosene, pure alcohol, and R113 	Do not dry clean 		
Ironing	Maximum ironing temperature 200°C 	Maximum ironing temperature 150°C 	Maximum ironing temperature 110°C 	Do not iron 		
Drying	Dry flat (placed on a flat surface) 	Drip dry  Line dry 	High heat  Low temperature 	Do not dry 		

PREPARATION FOR WASHING









1. Classify clothing according to its type (cotton, blended fiber, silk, wool, etc.), label requirements, color (white, colored, etc.), degree of soiling, etc.
2. Empty all pockets. Remove metal items that could damage clothing or the appliance. Fasten buttons and turn garments with buttons or embroidery inside out. Zip up and tie any drawstrings.
3. Place sensitive clothing and small, lightweight clothing into a mesh laundry bag and wash them together with other clothing.
4. For clothes with pilling surfaces or long pile fabrics, please turn them over before washing.
5. Stains will be difficult to clean after being left for a long time. Please pre-treat the soiled areas such as the cuffs and collars of your clothes before washing (refer to "RECOMMENDATIONS FOR SPECIFIC STAIN REMOVAL").
6. Do not wash heavy quilts, plush toys, or clothes in laundry bags separately to avoid unbalance error.




CLOTHES THAT ARE UNSUITABLE FOR BOTH WASHING AND DRYING

 <p>Leather or fur products (may cause deformation)</p>	 <p>Rayon and its blended fabrics (may cause discoloration or deformation)</p>	 <p>Rubber-made or large-sized thick mats (may cause damage or malfunction)</p>
 <p>Hats containing hard materials (may damage the washing machine and cause malfunctions)</p>	 <p>Seat cushions, pillows, items containing cotton wool, foam, and other sponge materials, and carpet covers (may cause damage or malfunction)</p>	<p>Others: Wrinkled or embossed processed clothing; coated down clothing; crepe fabrics; Clothing prone to deformation (suits, jackets, ties, dresses, etc.); Clothes prone to pilling (silk velvet or cotton velvet).</p>

CLOTHES THAT ARE UNSUITABLE FOR DRYING (APPLICABLE TO MODELS WITH A DRYING FUNCTION)

 <p>Any clothing marked with any of the above symbols (may damage the clothing)</p>	 <p>Woolen clothing (may cause shrinkage and pilling)</p>	 <p>Tights and stockings (may cause damage or deformation)</p>	 <p>Starched clothing</p>
 <p>Mats and fur clothing (may cause damage or malfunction)</p>	 <p>Quilt (may cause damage or malfunction)</p>	 <p>Clothes with lace and embroidery and new synthetic fibers (ultra-fine fibers) (may cause deformation)</p>	 <p>Silk</p>

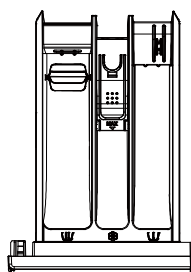
 Non-washable. Dryable/Non-dryable clothes include, but are not limited to, the above-mentioned clothes.

 Check the clothing label to confirm that the garment has a machine-washable/dryable symbol.

 Wet clothes that are still dripping are not suitable for drying and may cause the appliance to alarm.

ADD DETERGENT/SOFTENER

DETERGENT DRAWER



DETERGENT DRAWER	
U	Prewash compartment
W	Main wash compartment
⊗	Softener compartment

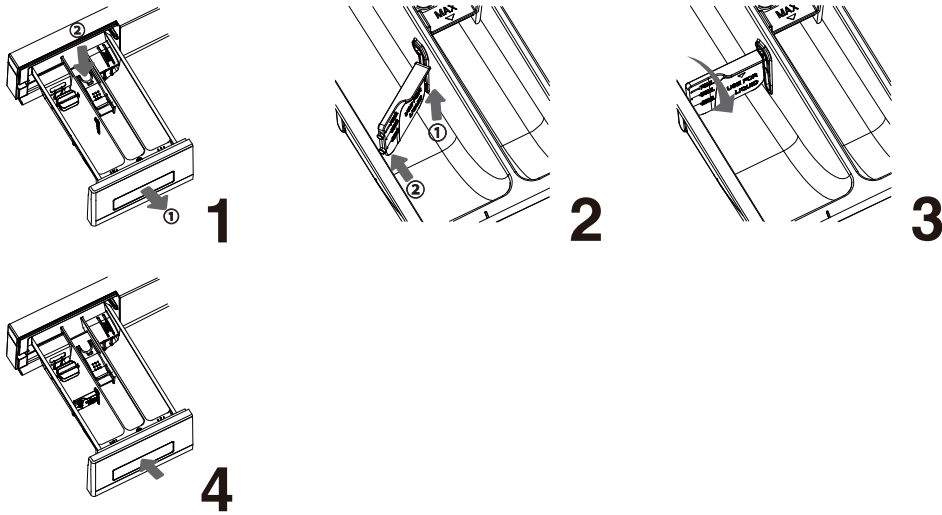
PRECAUTIONS FOR USE


1. Always use a high-efficiency neutral low-foaming detergent suitable for this appliance. The amount of detergent to be used depends on the type of clothing, degree of soiling, color of clothing, and washing temperature. Please add an appropriate amount according to the detergent manufacturer's instructions.
2. Excessive detergent may cause foaming, which will affect the washing effect. If the appliance detects too much foam, it may pause the program for defoaming.
3. If insufficient detergent is used, it may result in poor washing performance and could also lead to the formation of limescale in the drum and water hoses.
4. When adding powder detergent, we recommend adding it immediately before the wash program starts. If you add detergent in advance, make sure that the detergent drawer is completely dry; otherwise, the powdered detergent may harden and clump before the washing program begins.
5. If you are using the "Reservation" function (if available) or have selected the "Pre-Wash" function (if available), do not use liquid detergent, as liquid detergent will be dispensed immediately and may become sticky in the dispenser drawer or drum.
6. Do not allow detergent to harden, as this may cause clogging, poor rinsing, or odor.
7. Pour the softener into the compartment marked with the "⊗" symbol in the detergent box and follow the instructions on the softener packaging. Do not add more softener than the MAX mark on the softener compartment, otherwise the softener will be added to the clothes too early, resulting in poor washing results.
8. Keep detergent and softener out of the reach of children.
9. Corrosive descaling agents may damage the appliance. Do not use solvents. Do not wash clothing that has been cleaned with solvents or flammables.
10. If you use modern phosphate-free detergent, white residue (streaks, etc.) may appear on black clothing. In this case, you can scrub off the white stripes and then use a liquid detergent.
11. Before starting a program, gently close the detergent drawer. Closing the detergent drawer forcefully may cause the detergent to spill into other compartments or be placed in the drum earlier than the time set in the program. When closing the detergent drawer, be careful not to get your hands caught.
12. At the end of the program, a small amount of water may remain in the dispenser drawer.
13. The detergent dispenser drawer is not designed for adding disinfectants. It is not recommended to use disinfectant. If disinfectants are necessary, make sure to choose products designed for fabrics. Avoid using disinfectants containing strong corrosive or bleaching agents. Use only after proper dilution, and strictly control the concentration and frequency of use (it is recommended to use no more than once a month) to prevent damage to equipment or fabrics.

INSTALLING/USING THE BAFFLE

If your accessories are equipped with baffles, follow the steps below to install the baffles in place for a better detergent dissolution effect when using detergent.

1. Pull out the detergent drawer. Press the small tab in the detergent drawer to pull out the detergent drawer.
2. With the scale line of the baffle facing the operating side, first, insert the two guide posts on one side of the baffle into the slots, then gently pull the detergent drawer, and finally, insert the two guide posts on the other side into the slots on that side.
3. Slide the baffle forward and downward to lower the baffle.
4. Put the detergent drawer back into place.




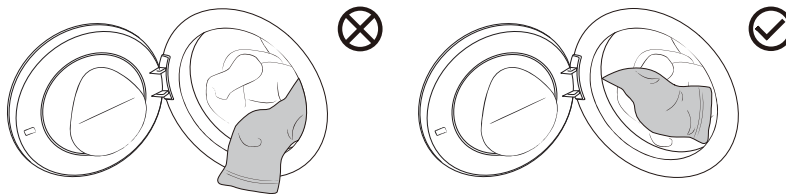
 When using powdered detergent or gel detergent, always remove the baffle to prevent detergent residue.

PUT IN THE LAUNDRY

Open the machine door, make sure there is no foreign matter in the drum, and put the clothes loosely into the drum. Close the door until you hear a "click" indicating it is securely closed.

 Do not overload the drum! Refer to the "PROGRAM TABLE" for the maximum load. If the drum is too full, the clothes may not be cleaned effectively.

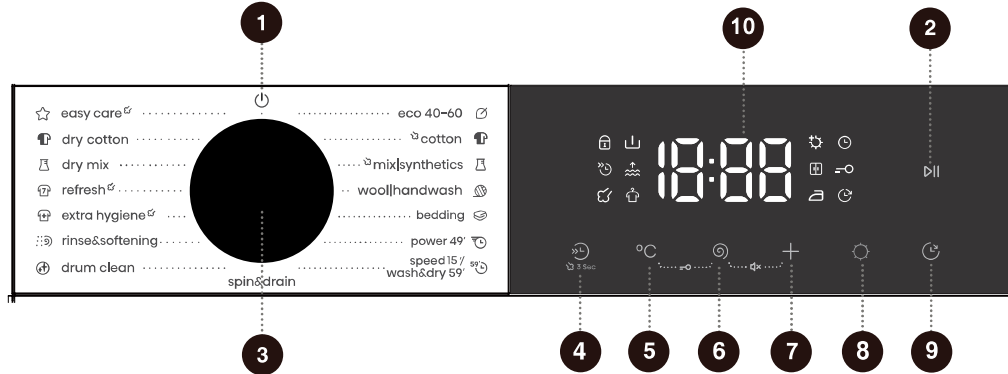
 Please put the laundry into the drum completely to prevent the clothes from getting caught in the door.



PROGRAMS AND FUNCTIONS

CONTROL PANEL

Please refer to the actual product for the final print



1 Power
 Used to turn off the device's power.

2 Start/Pause
 Used to start/pause a program.

3 Cycle Selector
 Turn the main knob to power on the device and select a program.

4 Quicker
 Short press the button to reduce the washing time of the program.
 * **Steam**
 Press and hold to activate/deactivate the steam function.

5 Temp. °C
 Set washing temperature.

6 Spin
 Set dehydration spin speed.

7 Options
 Press this button to select additional functions.

8 Dry Level
 Press this button to select the drying mode and add the drying function.

9 Delay End
 This function allows you to schedule laundry at your convenience.

5+6 Child Lock
 Press and hold these two buttons at the same time to turn on/off the child lock function.

6+7 Mute
 Press and hold these two buttons simultaneously to enable/disable the mute function.

10 Display
 Used to display the remaining time of the program, reservation time, fault code, and other related information.

***Extra Function: Hold 3 sec.**

For extra function:
 Press and hold for 3 seconds.

PROGRAM TABLE

Turn the main knob to select the appropriate program (depending on the type of clothing and the degree of soiling). During operation, the main knob will not turn automatically.

Program	Function	Maximum load (kg)	Maximum speed (rpm)	Program description
eco 40-60	W	8	1400	This program is suitable for cotton cloth with a general degree of soiling.
–	WD	5		
cotton (–, 20°C, 30°C, 40°C, 60°C, 90°C)	W	8	1400	This program is suitable for cotton or linen fabrics with a medium to heavy degree of soiling.
	WD	5		
mix synthetics (–, 20°C, 30°C, 40°C, 60°C)	W	4	1400	This program is suitable for soiled synthetic fabrics with a medium degree of soiling.
	WD	4		
wool handwash (–, 20°C, 30°C, 40°C)	W	2	600	This program is suitable for washing machine washable woolen clothes (refer to the laundry label requirements).
bedding (–, 20°C, 30°C, 40°C, 60°C)	W	2	1400	This program is suitable for large-sized items such as curtains, bed sheets, and duvet covers.
	WD	2		
power 49' (–, 20°C, 30°C, 40°C)	W	4	1400	This program is suitable for a small amount of heavily soiled laundry, with an intensive wash cycle in a short period of time.
	WD	4		
speed15' (–, 20°C, 30°C, 40°C)	W	1	800	This program is suitable for washing a small amount of laundry or lightly soiled laundry. If you change the default setting, the washing time will be longer.
wash & dry59' –	WD	1	1400	This 59-minute wash and dry program is suitable for lightly soiled clothes, such as T-shirts, shirts, skirts, etc., which need to be changed every day. It is recommended not to wash more than 3 pieces of clothes at a time.
spin & drain –	S	8	1400	This program is used for separate spinning of laundry. Do not add detergent/softener for this program.
	SD	5		
drum clean (90°C)	WD	/	800	This program is used to clean the drum and remove detergent residues, as well as bacteria that accumulate and grow when washing at low temperatures. Do not add detergent/softener for this program.
rinse & softening –	W	8	1400	This program is for separate rinsing and spinning of laundry. Do not add detergent for this program.
	WD	5		
extra hygiene (60°C)	W	2	1400	This program is suitable for high-temperature-resistant and colorfast garments, removing allergens such as pollen, mites, and parasites through high temperatures.
	WD	2		
refresh –	N	2	/	This program is used for sanitizing, dewrinkling, and deodorizing a small load of dry clothes. The faucet must be turned on, and neither detergent nor softener should be added.

Program	Function	Maximum load (kg)	Maximum speed (rpm)	Program description
dry mix –	D	4	/	This program is suitable for drying soiled synthetic fabrics after spinning. Do not add detergent/softener for this program.
dry cotton –	D	5	/	This program is suitable for drying wet cotton fabrics after spinning. Do not add detergent/softener for this program.
easy care (--, 20°C, 30°C, 40°C)	W	5	1400	This program is suitable for lightly soiled laundry.
	WD	5		

W → Wash only
N → Neutral

D → Dry only
S → Spin only


WD → Wash and dry
SD → Spin and dry


Tips:

- After selecting the speed15'/wash&dry 59'program, press the Dry Level button to complete the switch between the speed15' program and the ash&dry 59'program.
- The refresh program is a dry clothing care program that allows you to set the care time with the Dry Level function, which is available in a range of 30/40/50 minutes.

Note

- (1) Water temperature: Select the appropriate water temperature according to the selected washing program. When washing, follow the clothing manufacturer's washing label or instructions to avoid damaging the clothing.
- (2) The actual water temperature may differ from the stated program temperature.
- (3) Test results depend on water pressure, water hardness, inlet water temperature, room temperature, type and amount of laundry, degree of soiling, detergent used, power supply fluctuations and other options selected.
- (4) If you add too much laundry during the wash cycle, the laundry may be washed less efficiently because the machine initially detects a lower weight and adds less water. Insufficient water can also cause damage to the laundry and the wash time will be longer.
- (5) Drum Clean (if available): The drum must be emptied before using the Drum Clean program. It is recommended to run it at least once a month.
- (6) For descaling, use a descaling agent with corrosion protection (only use non-corrosive descaling agents and follow the instructions for use of the descaling agent). Run the "Drum Clean" (or other high temperature) program several times to remove any descaling agent residues and complete descaling. It is recommended to descale at least once every six months.

 The maximum or nominal load applies to laundry prepared in accordance with the relevant provisions of standard IEC60456.

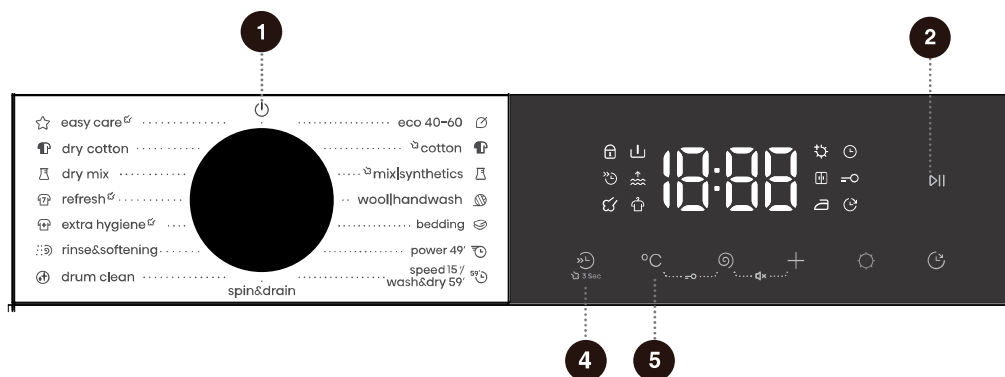
 For better washing performance, we recommend that you fill no more than 2/3 of the drum volume when using the Cotton program.

ADDITIONAL SETTINGS AND FUNCTIONS

The program comes with default settings, and some functions can be changed by user. You can adjust the settings by pressing the corresponding function button (before pressing the Start/Pause button).

Some settings cannot be selected or changed in some programs. These settings will not light up, and the buttons are inactive (see "FUNCTION SELECTION TABLE").

Most functions can only be set in standby mode, i.e., before a program starts. After starting the program, most functions cannot be adjusted anymore.



1 Power

Used to turn off the device's power.

During the program, if you need to shut down, turn the main knob to "U" to shut down.

In standby mode, when the program ends, if no operation is performed for a certain period, the device will automatically shut down. At this time, you need to turn the main knob to "U" to return to the position.

2 Start/Pause

Used to start/pause a program.

The device cannot be started if the door is not closed or the door lock is not locked.

4 Quicker

This function can shorten the washing time and speed up the washing process.

Short press this key. When the icon lights up, the quick wash mode is activated. For each reduction in the time gear setting, the maximum load capacity of the clothes decreases to half of that of the previous gear setting. Short press this button repeatedly until the icon turns off to disable this function. The washing time and the maximum load capacity will then return to their initial settings. The selectable acceleration gears may vary depending on the model and program.

For programs with automatic weighing, enabling this function will pause automatic weighing; once disabled, the automatic weighing function will resume.

Steam

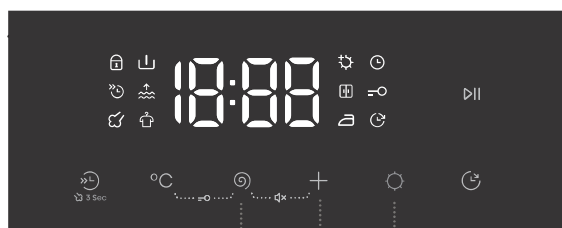
This function can add a steam wash program to the washing process.

Press and hold this button to light up the "S" icon and activate the "Steam" function. The same operation can be used to turn off this function.

5 Temp.

This function changes the temperature of the selected program.

Each program has a preset temperature. Before starting the program, press this button to display the current setting temperature for the first time. Press again to cycle through the set temperature gear (-- for cold wash). The heating temperature that can be set for each program is different.



6 Spin

This function can adjust the program's spin speed before the program starts. Press this button to display the current spin speed for the first time. Continue pressing to make a selection in the cycle of the set modes.

7 Options

This function selects additional functions for the current program before the program starts. Each press can only set one function. After the additional function is selected, the corresponding icon lights up or flashes.

Pre-wash

This additional function adds a prewash phase before the main wash to enhance washing performance.

When you select the prewash function, please add detergent to the prewash compartment of the detergent box.

Extra Rinse

This additional function can add an extra rinse cycle to the program.



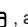

Anti Crease

The additional function is used to turn on the anti-crease mode. After the program ends, the inner drum rotates intermittently to prevent creases from being generated when clothes are not taken out for a long time.

When the additional function is turned on, the program automatically enters the anti-crease mode at the end. During the anti-crease function, pressing any button or turning the knob will end this function. If no operation is performed, the program will automatically end after a maximum of 12 hours by default. When the dehydration speed is set to "0", the anti-crease function cannot be set.


8 Dry Level


This function adds the option of drying after spinning.

Before starting the program, press this button to cycle through the selectable drying gears. Available drying gears: , , , and . The drying gear options vary depending on the selected program.

"": After drying, the clothes are ready for storage.

"": After drying, the clothes can be worn immediately.

"": After drying, the clothes contain a small amount of moisture and are suitable for ironing.

"": Timed dry, you can choose the appropriate drying time according to the type and quantity of clothes.

The optional range of Timed Dry is 30/60/90/120/180/240. Please select an appropriate drying time. If the drying time is too short, the clothes cannot be completely dried.

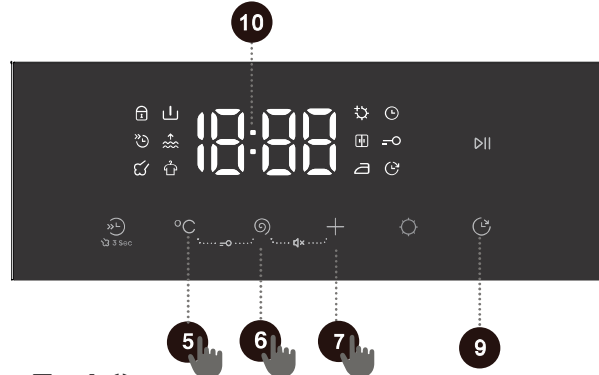
Before drying, please confirm the material of the clothes to see if they can be dried. Drying clothes of different materials together will affect the drying effect. It is recommended to dry them separately. Before drying, you need to confirm that the faucet is turned on and it must be cold water.

At the beginning of drying, water automatically enters the drum to rinse the lint in the air duct, which is normal.

At the end of the drying process, the device will run at a certain rhythm for a period of time to shake out the laundry and reduce wrinkles.

If hand-washed clothes need to be dried, please spin them before drying. Please try to choose a suitable spin speed according to the type of clothes. Excessive cotton clothes that stick to the drum wall after spinning may affect the drying effect. It is recommended to take them out of the drum first, shake them out, and then put them back into the drum; please dry them in batches, and do not exceed the maximum amount of such clothes each time.

The device can sense the weight of the clothes being dried and automatically adjust the drying time and drying intensity. The drying time may be longer or shorter than the set time (except for Timed Dry). Some programs have a built-in drying function, while some programs do not have the drying function.



9 Delay End

This function allows you to schedule laundry at your convenience.

After selecting the program and function, make a reservation. Press this button to start the reservation, and press it again to cycle through the available options. Each press adjusts the time by 1-hour increments. The maximum selectable time is 24 hours.

The reservation time is the end time of the program, including the entire program running time, so the reservation time must be greater than the program running time.

After selecting the delay end time, press the **Start/Pause** button to start the delay end process.

When the reservation process is in progress, the icon "" on the display lights up or flashes. When the reservation process finishes, the icon goes off.

If the Delay End function has been selected before the program starts, it can be canceled by selecting another program or function button.

After the program is started, if you need to cancel the Delay End function, you need to shut down and restart.

5 + 6 Child Lock

To prevent children from operating the device accidentally and protect their safety, this device is equipped with a Child Lock function.

Press and hold the "Temp. + Spin" button simultaneously. The child lock icon "" will light up, and the child lock function will be turned on. The same operation can be used to disable the Child Lock. After the Child Lock function is enabled, all button and knob operations are locked, except for turning the knob to power off and using the combination key to disable the Child Lock. After the program ends, the child lock function is automatically cancelled.

6 + 7 Mute

This function can mute all prompt sounds except the alarm sound.

When the device is in standby, paused, or running, press and hold the "Spin+Options" buttons simultaneously to enable the Mute function. Except for the alarm sound, all other device sounds are muted. The same operation can disable the Mute function, and all prompt sounds will be reactivated.

10 Display

Used to display the remaining time of the program, reservation time, fault code, and other related information.

Icon description

	Door lock indicator icon. When this icon lights up, the device door is locked. Do not force the door open at this time to avoid causing injury.
--	---

FUNCTION SELECTION TABLE

Program	Quicker	Steam	Temp.	Spin	Pre-wash	Extra Rinse	Anti Crease	Dry Level	Delay End	Child Lock	Mute
eco 40-60	-	-	-	•	-	-	-	•	•	•	•
cotton	•	•	•	•	•	•	•	•	•	•	•
mix synthetics	•	•	•	•	•	•	•	•	•	•	•
wool handwash	-	-	•	•	-	•	-	-	•	•	•
bedding	-	-	•	•	•	•	•	•	•	•	•
power 49'	•	-	•	•	•	•	•	•	•	•	•
speed 15'	-	-	•	•	-	•	•	-	•	•	•
wash & dry 59'	-	-	-	-	-	-	•	•	•	•	•
spin & drain	-	-	-	•	-	-	•	•	•	•	•
drum clean	-	-	-	-	-	-	-	◦	•	•	•
rinse&softening	-	-	-	•	-	•	•	•	•	•	•
extra hygiene	-	◦	-	•	•	•	•	•	•	•	•
refresh	-	-	-	-	-	-	•	•	•	•	•
dry mix	-	-	-	-	-	-	•	•	•	•	•
dry cotton	-	-	-	-	-	-	•	•	•	•	•
easy care	-	•	•	•	•	•	•	•	•	•	•

- The function is optional
- The function is not optional
- Function default and cannot be canceled


START THE PROGRAM

Select the program and additional functions, and make sure that the detergent has been added to the detergent drawer. Press the **"Start/Pause"** button to start the program.



After pressing the **"Start/Pause"** button, other settings cannot be changed except turning Child Lock on/off, turning Mute on/off (if available), and adjusting Water Level (if available).

When the program starts, if the display shows "---", indicating that the clothes are being weighed.

 Some programs automatically detect the weight of clothes before washing, and the program duration will be automatically adjusted.

END OF THE PROGRAM

When the program finishes, the device emits an acoustic signal and "End" appears in the display. If you do not perform any operation for a period of time, the device will automatically shut down.

1. Turn off the device power.
2. Turn off the water tap.
3. Unplug the power cord from the outlet.
4. Open the machine door.
5. Remove the clothes from the drum.

PROGRAM INTERRUPTIONS AND CHANGES

Cancel program

To cancel a program while it is running, you need to turn off the device power.

Change program

If you want to change the program while it is running, you need to turn off the power of the device first; After powering on, reselect the program and additional functions, and press the "Start/Pause" button to start.

Pause the program


You can press the "Start/Pause" button to pause the program at any time during the program operation. When the remaining program time on the display flashes, the program is paused. If the following conditions are met, the door lock is unlocked and the machine door can be opened.

1. The temperature in the drum must be suitable;
2. The water level in the drum must be below a specific value.

To resume the program, please close the door first, and then press the "Start/Pause" button. The wash program is paused and started again, and the program continues from where it was interrupted. The spin program is paused and restarted, and the program starts from the beginning of the spin cycle.

Add Clothes

If you need to add clothes during the program, after confirming that the water level and temperature in the machine are safe, press the "Start/Pause" button to pause the program. The remaining program time on the display will flash, and the door lock icon will go out (the "Add Clothes" icon "👕" will light up for some models), and then you can open the door to add clothes. If the door lock icon does not go out, the door opening conditions are not met and you cannot add clothes.

 If too much extra clothing is added during the washing process and the amount of water is insufficient, the cleaning effect will be poor, because the device calculates the amount of water intake based on the weight of the initial clothing. Insufficient water may also cause damage to the clothing (due to friction), and the washing time will be prolonged.


Fault

If the device fails, the program will be interrupted.


If this happens (see "FAULT CODES AND TROUBLESHOOTING"), the device will sound an alarm with a flashing light and a beep, and the fault code (FXX) will appear on the display.


Power failure

In the event of a power failure (blackout), the washing program will be interrupted. When the power supply is restored, the program will continue running from the stage where it was interrupted.


 **If there is still water in the appliance after a power outage, do not open the door before manually draining the water using the drain pump filter.**

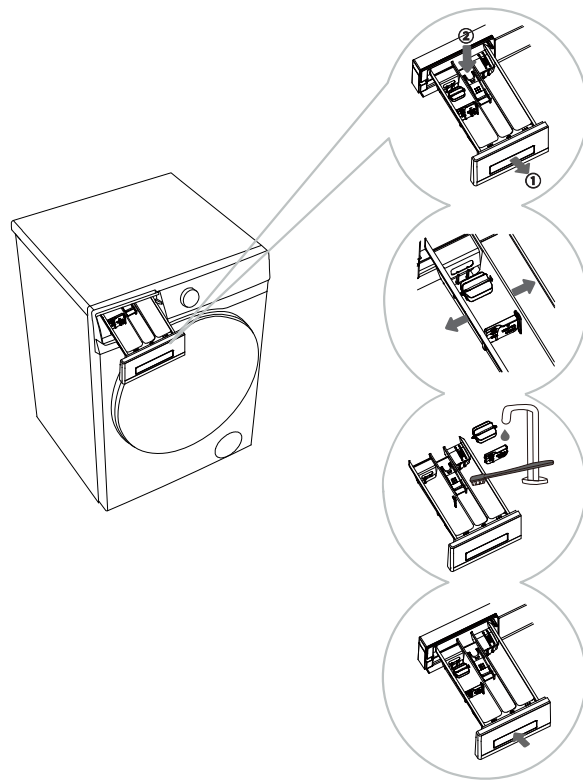
MAINTENANCE AND CLEANING

 Regular maintenance can extend the appliance's service life. Before maintenance, please be sure to cut off the power supply and turn off the faucet.

 Children are not allowed to clean or perform any maintenance work on this device without supervision.

CLEANING THE DETERGENT DRAWER

 Clean the detergent drawer regularly.





1 Pull out the detergent drawer. Press the small tab in the detergent drawer to pull out the detergent drawer. (See the position indicated by the arrow in the left figure.)

2 Gently bend the main wash compartment of the detergent drawer by hand to slightly deform it, and remove the baffle and roller.

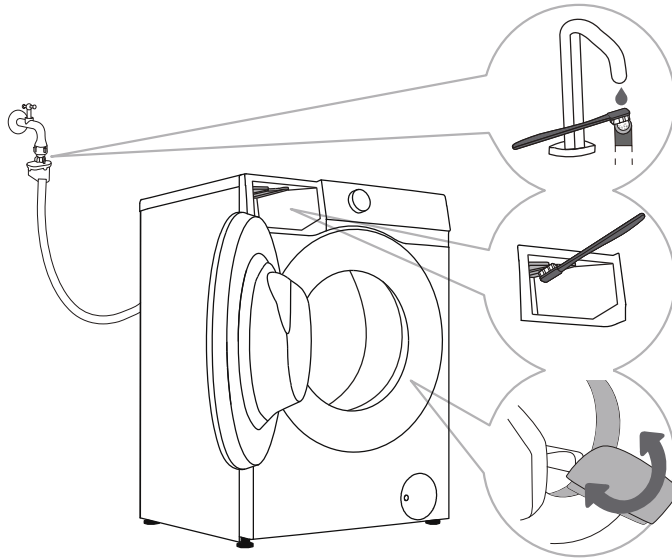
3 Use a brush to clean the baffle, roller, and detergent drawer separately.

4 Clean any remaining detergent from the bottom of the detergent drawer and wipe it dry. After wiping the baffle and roller dry, reinstall them in their original positions and reinstall the detergent drawer into place.

 When installing the roller, make sure that the positioning posts at both ends of the roller match the positioning holes of the detergent drawer.

 Do not place the detergent box in the dishwasher for cleaning.

CLEAN THE WATER HOSE, DETERGENT DRAWER OUTER COMPARTMENT, AND RUBBER DOOR GASKET




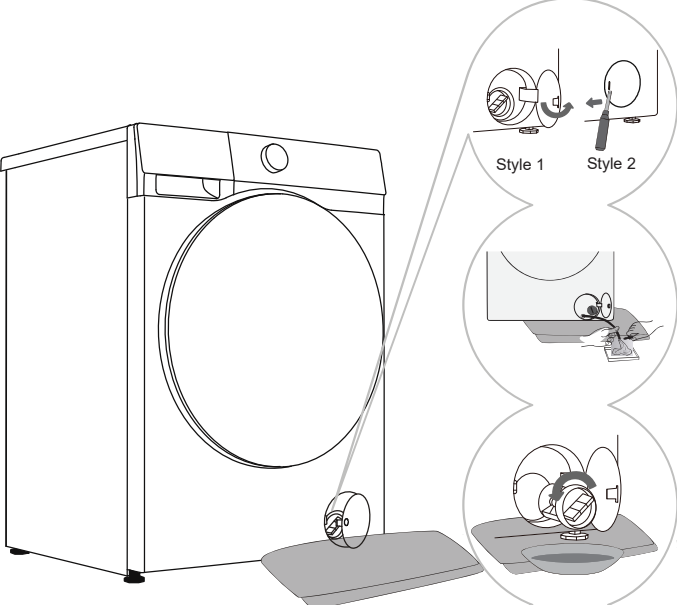
1 Clean the water inlet hose filter regularly.

2 Use a brush to clean the detergent drawer outer compartment, especially the nozzle on the upper side of the compartment.

3 After each wash, wipe the rubber door gasket to extend its life. After washing, keep the appliance door slightly open to release moisture before closing it, to prevent the door seal from getting moldy.

CLEANING THE PUMP FILTER

 When cleaning the pump filter, water may spill out. Therefore, it is recommended to place an absorbent cloth on the floor. Before draining the water, make sure the water has cooled down.




1 Open the drain pump filter cover. Style 1: Press the door cover; the filter cover pops out; Style 2: Use the appropriate tool (flat head screwdriver or a similar tool) to open the drain pump filter cover. (The style depends on different models.)


2 Place a towel under the filter door. If the device has a discharge pipe, place the discharge pipe end into a container, rotate the discharge pipe plug, remove it after it loosens, wait until the water drains out naturally, and reinstall the discharge pipe plug. If the device does not have a discharge pipe, place a container under the pump filter. (The style depends on different models.)


3 Slowly turn the pump filter counterclockwise. Pull out the pump filter to allow water to drain slowly.


4 Clean the pump filter with tap water.

5 Reinstall the pump filter as shown in the illustration, and tighten it clockwise. To ensure a good seal, the filter sealing ring surface should be kept clean.

 It is recommended to clean the drain pump filter every two months.

 It is recommended to clean the drain pump filter every time you wash items such as quilts and bath towels that are prone to shedding.

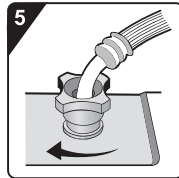
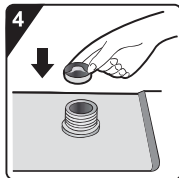
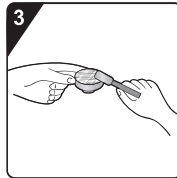
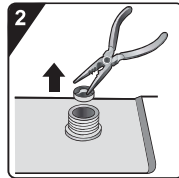
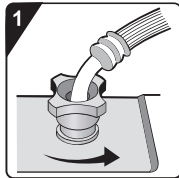
 If the spin program cannot start or there is debris (buttons, coins, hairpins, etc.) in the drain pump, clean the pump filter.

 Do not open the pump filter while the device is in operation. Do not operate the device before the pump filter is installed in place to avoid water leakage or malfunction.

CLEANING THE INLET FILTER

Check and clean the inlet filter regularly.

If the water inlet speed is slow, please clean the filter at the water inlet in time. The specific steps are as follows:




1 Turn off the water tap and loosen the water inlet hose.

2 Remove the inlet filter.


3 Clean the inlet filter.

4 Install the inlet filter.


5 Connect the water inlet hose. Turn on the water tap and make sure there are no leaks at the connections.


 The inlet filter collects impurities and sediment in the water supply of the equipment. It is recommended to clean the inlet filter at least once every six months. If the water is hard or there are limescale deposits, the filter should be cleaned more frequently.

CLEANING THE OUTSIDE OF YOUR WASHER

 **Before cleaning the outside of your washer, please be sure to disconnect the machine from the power supply.**

Clean the appliance housing and control panel with a soft, damp cloth. Then wipe them dry with a soft dry cloth.

 Do not use solvents, abrasive cleaners, or cleaning agents that may damage the device (please follow the recommendations and warnings provided by the cleaning agent manufacturer). Wipe the drum door with a damp cloth, and then wipe it dry with a soft dry cloth.

 If cleaning with a wet towel, make sure to ring out the water from the towel before wiping down the washer.

TROUBLESHOOTING

The device is equipped with various automatic safety functions, ensuring that faults can be detected promptly and effective safety countermeasures can be initiated.


These faults are usually minor and can be eliminated in a very short time.

When the device cannot operate normally, the display will show abnormal information. Please refer to the warning content and take appropriate actions.

If the fault persists after you have handled it yourself according to the recommended processing method, please contact after-sales service.

If the user performs maintenance by themselves or hires non-manufacturer after-sales personnel, all consequences will be assumed by the user.

Fault Description	Recommended handling methods
<p>The device cannot start normally</p>	<ul style="list-style-type: none"> ◇ Check whether the device power supply is plugged into the power socket, and whether the power socket is working properly (you can test the power socket with other electrical devices). ◇ Check if the machine door is closed properly. ◇ Check if the "Start/Pause" button is pressed.
<p>The device stops operating under normal working conditions</p>	<ul style="list-style-type: none"> ◇ Check if the machine door is closed properly. If not, close the door and press the "Start/Pause" button. ◇ Check for excessive foam. When the device detects excessive foam, it will enter a draining or standby state, or water will be taken to eliminate foam for defoaming treatment. The program is paused during this process, and the time displayed on the screen remains unchanged. After defoaming is completed, the device will automatically resume operation. If foam overflows and leaks, wipe away the foam to prevent corrosion of the device. ◇ Check if the device has activated the alarm protection.
<p>The time at which the program starts displaying may be extended or shortened by a certain duration</p>	<p>This is an adaptive adjustment made by the device in response to factors affecting the washing time.</p> <ul style="list-style-type: none"> ◇ Excessive foam. ◇ Bulky clothing causes imbalance. ◇ The low inlet water temperature causes the heating time to be prolonged. <p>Due to the above reasons, the remaining time displayed by the program will be recalculated and updated in a timely manner (when the device is making imbalance adjustments, the displayed time remains unchanged). In addition, during the water intake phase, the device detects the load and adjusts the program time accordingly (fuzzy control).</p>
<p>After washing, there is residual detergent or other additives in the detergent drawer</p>	<ul style="list-style-type: none"> ◇ Check whether the detergent drawer is installed correctly and kept clean. ◇ Check whether the water pressure is normal and whether the filter of the water inlet hose is blocked (refer to "MAINTENANCE AND CLEANING").
<p>The equipment has an odor</p>	<ul style="list-style-type: none"> ◇ The odor may be caused by the rubber material inside the device. This is the smell of the rubber itself and will automatically disappear after a few uses.

 Faults or problems caused by external factors (such as lightning strikes, power grid failures, natural disasters, etc.) are not covered by the warranty.

Fault Description	Recommended handling methods
Abnormal sound/noise occurs during the washing process	<ul style="list-style-type: none"> ◇ A foreign object, such as a key, coin, or pin, may have fallen into the drum. Shut down the equipment and check whether there is any foreign matter in the drum. If there is still abnormal noise after restarting, please contact after-sales service. ◇ The laundry may be unevenly distributed in the drum. Pause the program and redistribute the laundry after unlocking the door.
The equipment vibrates intensely during spinning	<ul style="list-style-type: none"> ◇ Check whether the device is placed level, with the four feet stably supported on a flat surface. ◇ Check that the transport screws have been removed. Before using the equipment, the transport screws must be removed. ◇ Check that all bottom support foam has been removed.
Poor Spin Effect	<p>The device has a balance detection and correction system. If clothes are very heavy (such as bathrobes), the system detects imbalance and, after trying to spin dry multiple times, will automatically reduce the spin speed or even stop spinning to protect the device.</p> <ul style="list-style-type: none"> ◇ If clothes are still very wet after the spin cycle, take them out, shake them out, and select the spin cycle again. ◇ Excessive foam will affect the spin effect. Please use an appropriate amount of low-foaming detergent. ◇ Check whether the speed selection is set to "0" or "No Spin".
Water leakage problem occurs	<ul style="list-style-type: none"> ◇ The water inlet hose is leaking. Check whether the tap and the water inlet hose connector are leaking. If there is leakage, wrap sealing tape around the end of the tap or replace it with a suitable tap. It is recommended to check whether the water inlet hose connector and the water inlet valve port are tightened. After tightening, the leakage will be eliminated. ◇ The drain hose is leaking. For top-drain models, the drain hose fixing clip should not be removed; otherwise, the drainage will not stop. ◇ The detergent drawer is leaking. ◇ The detergent drawer is not closed tightly. Please push the handle of the detergent drawer tightly to close it. ◇ The door gasket is leaking. Check the door gasket for any foreign matter and clean it.
Excessive wrinkling	<ul style="list-style-type: none"> ◇ Clothes were not taken out of the machine in time. After the washing program is completed, please take out the clothes from the machine in time. ◇ The device is overloaded. The drum should not be tightly packed with clothing, and the door should close easily. ◇ The spin speed may be too high. Set the appropriate speed for the clothing type.

DRYING MALFUNCTION (applicable to models with drying function)

Fault Description	Recommended handling methods
Appliance not drying	<ul style="list-style-type: none"> ◇ Check if a drying program has been set. ◇ Check whether the water tap is turned off. ◇ Check if the machine door is closed properly. ◇ Check if the load of laundry is excessive (refer to the "PROGRAM TABLE" for the recommended capacity for the selected program). Remove some items and restart the drying cycle.
Insufficient drying	<ul style="list-style-type: none"> ◇ Check if the load of laundry is excessive. Overloading can result in poor drying performance and may cause wrinkles. Dry the load in separate batches. ◇ Check whether clothes that are difficult to dry (such as thick cotton) are mixed with clothes that are easy to dry (such as synthetic fibers). ◇ Dry different types of clothes separately.
Drying time is too long	<ul style="list-style-type: none"> ◇ Check if the load of laundry is excessive (refer to the "PROGRAM TABLE" for the recommended capacity for the selected program). Remove some items and restart the drying cycle. ◇ Insufficient spin of laundry (refer to the "POOR SPIN EFFECT" section for handling). ◇ The load contains many thick items (such as denim).
Odor during drying	<ul style="list-style-type: none"> ◇ The use of detergents or softeners with strong chemical fragrances may cause odors during clothes drying. ◇ If the appliance is not thoroughly cleaned inside, residual dirt may cause odors during clothes drying. Please clean the appliance regularly (refer to "MAINTENANCE AND CLEANING") and promptly remove clothes after the drying cycle ends.

FAULT CODES AND TROUBLESHOOTING

When the device does not operate normally and the display shows the following code, it may not be a fault. Please refer to the content in the fault code and take the corresponding measures.


Problem/ Fault	Description	Solution
F01	Water inlet fault	<p>Check the following items:</p> <ol style="list-style-type: none"> 1. Is the water tap open? Is the water pressure too low? 2. Is the water inlet hose pinched? 3. Is the water inlet hose filter clogged? 4. Is the water inlet hose frozen? <p>After excluding these problems, press the "Start/Pause" button to continue running.</p>
F03	Water outlet fault	<p>Check the following items:</p> <ol style="list-style-type: none"> 1. Is the drain hose pinched? Is there water flowing in the hose? 2. Whether the filter at the draining pump is blocked? 3. Is the drain hose frozen? <p>After excluding these problems, press the "Start/Pause" button to continue running.</p>
F24	Overflow	<p>Pause the program first, then restart the program.</p> <p>If the device continues to overflow, please turn off the tap and contact a service technician.</p>
F13	Door locking fault	<p>The appliance door is closed but cannot be locked.</p> <p>Turn off the appliance, turn it back on, and restart the wash program. If the fault still exists, please contact a service technician.</p>
F14	Door unlocking fault	<p>The appliance door is closed but cannot be locked.</p> <p>Turn off the machine first, then turn it on. If the fault still exists, please contact a service technician.</p>
Other	Electronic module fault	<p>Turn off the appliance and then turn it on again. Restart the washing program.</p> <p>If the fault still exists, please contact a service technician.</p>
Unb	Unbalance alarm	<p>To clear the unbalance alarm, follow these steps:</p> <ol style="list-style-type: none"> 1. Entangled laundry If the laundry is tangled together, first turn off the machine, open the door, and loosen clothes. Then, place them back into the drum, close the door, and select the separate "Spin" program to try again. 2. Insufficient laundry weight Turn off the machine, open the door, and add more clothes (or add one or two towels). Close the door, and select the separate "Spin" program to try again.
F15-F18	Drying abnormality (applicable to models with drying function)	<p>Turn the appliance off and then turn it on.</p> <p>If the fault still exists, please contact a service technician.</p>


SERVICING

BEFORE CALLING MAINTENANCE PERSONNEL

When you contact the service center, please first state your device model.

Information such as model number, code/ID, model type, and serial number are displayed on the nameplate of the device.

 In case of defects, only use spare parts approved by the authorized manufacturer.

 Repairs or any warranty claims resulting from incorrect connection or use of the device are not covered by the warranty. In this case, the maintenance costs shall be borne by the user.

USAGE RECOMMENDATIONS

When washing colored clothes for the first time, separate them by color.

When washing heavily soiled clothes, load fewer clothes each time and use more powder detergent or select the prewash function (if available). Before starting the wash, apply a special stain remover to stubborn stains. Refer to "RECOMMENDATIONS FOR SPECIFIC STAIN REMOVAL".

If you frequently wash clothes with cold water and liquid detergent, the appliance may develop bacteria, resulting in unpleasant odors. We recommend running the "Drum Clean" (or other high-temperature) program periodically to clean the drum.

Avoid washing very small loads to prevent energy waste and poor cleaning results. Shake out clothes that are folded or tangled together before putting them into the drum.

Use detergents specifically designed for machine washing.

If the water hardness exceeds 14°dH, use a water softener. Damage to the heater caused by improper use of water softeners is not covered by the warranty. Consult your local water supplier for water hardness information.

The use of chlorine-containing bleach is not recommended, as it may damage the heater.

If using descaling agents, bleaches, or colorants, ensure they are suitable for this washing machine.

Do not use solvents or similar chemicals (such as paint thinner, turpentine, gasoline, etc.).

Do not put hardened powder detergent into the detergent dispenser, as this may clog the internal hoses of the appliance.

Powder or liquid detergents should be added according to the manufacturer's instructions, the wash temperature, and the selected washing program.

When using thick liquid fabric care products, it is recommended to dilute them with water to prevent clogging the detergent drawer drainage outlet.

Liquid detergents are suitable for washing programs without a prewash cycle.

Be careful not to confuse detergent and softener.

The higher the spin speed, the less moisture remains in the clothes. Therefore, using an appliance with a drying function is more economical and efficient for drying clothes.

RECOMMENDATIONS FOR SPECIFIC STAIN REMOVAL

Before using specialty stain removers, try natural, environmentally friendly methods to remove lighter, stubborn stains. It is easier to remove stains if you treat them promptly!

Please wash with cold water (warm water) according to the following stain removal methods. Do not use hot water!

Stain type	Stain removal method
Mud	If the stain is dried mud, first scrape it off the garment, then put it into the machine for washing. For stubborn stains, soak the garment first in an enzyme-based stain remover before washing. For less stubborn stains, pre-treat the garment with liquid or powder detergent manually before washing.
Antiperspirant	Before placing the garment in the machine for washing, apply liquid detergent directly to the stains. For stubborn stains, use a stain remover for treatment. or wash with an oxygen bleach.
Tea	Soak or wash the garment in cold water. Add the stain remover if necessary.
Chocolate	Soak or wash the garment in warm soapy water, then apply lemon juice and rinse.
Ink	Before starting the wash, apply a stain remover to stains. You may also use the denatured alcohol, turn the garment inside out and place a tissue paper under the stain, apply alcohol from the back side of the garment, then wash the garment thoroughly after treatment.
Marker pen writing	Dilute some starch with water, then apply it to the stain. After it dries, brush it off with a brush; then, put the garment into the machine for washing.
Baby stains (urine, mud, or food)	Soak the stained area in warm water for at least half an hour before putting the garment into the machine for washing. To make it easier to remove stains, an enzyme-based detergent can be added.
Grass	Before putting the garment into the washing machine, soak them in an enzyme-based detergent first. You can also soak it in diluted lemon juice or white vinegar (for about 1 hour) to remove grass stains.
Egg	Soak the garment in an enzyme-based detergent. Soak it in cold water for at least 30 minutes. If the stain is stubborn, you can soak it for several hours. Then, put the garment into the machine for washing.
Coffee	Soak the garment in salt water. For older stains, you can soak it with a mixture of castor oil, ammonia, and alcohol.
Shoe polish	Apply edible oil to the stain, then wash the garment.

Stain type	Stain removal method
Blood	For fresh blood stains, first rinse the garment with cold water, then put it into the machine for washing. For dried blood stains, soak the garment in an enzyme-based detergent. Then, put the garment into the machine for washing. If the stain remains, consider using a bleach product suitable for the fabric type.
Glue or chewing gum	Put the garment in a bag, then place it in the refrigerator until the stains harden. Scrape it off with a dull knife. Dilute the stain with a prewash stain remover and wash thoroughly. Finally, put the garment into the machine for washing.
Makeup	Use a stain remover to pre-wash, then put the garment into the machine for washing.
Butter	Before putting the garment in the washing machine, apply a stain remover to the stains. Then wash with hot water (temperature permitted by the garment).
Milk	Soak the garment in an enzyme-based detergent. Soak the garment for at least 30 minutes. If the stain is stubborn, you can soak it for several hours. Then, put the garment into the machine for washing.
Juice	Apply salt water to the stains. Leave it for a short while, then wash. Alternatively, before putting the garment in the washing machine, apply baking soda, white vinegar, or lemon juice to the stains. For old stains, apply castor oil to the stains, and rinse with cold water after 20 minutes. Finally, put the garment into the machine for washing.
Wine	Soak the garment in cold water for at least 30 minutes. Use the detergent at the same time. Then, put the garment into the machine for washing.
Wax	Put the garment in the refrigerator until the wax stains harden. Then scrape it off. Place a piece of paper towel over the stain, then iron on top until the paper towel absorbs the remaining wax.
Sweat	Before placing the garment in the machine for washing, apply liquid detergent directly to the stain.
Chewing gum	Put the garment in the refrigerator until the chewing gum harden, then scrape it off. Then, put the garment into the machine for washing.

DISPOSAL



The packaging is made of environmentally friendly materials and can be recycled, reused, processed, or destroyed without causing harm to the environment. For this purpose, the packaging materials are marked with appropriate labels.

This icon on the product or its packaging indicates that this product cannot be disposed of as household waste. Please dispose of this product at a collection point for the recycling of electrical and electronic equipment.

When the device reaches the end of its life and needs to be scrapped, please remove all power cords, destroy door locks and switches to prevent the doors from locking. This is to avoid the risk of children or small animals becoming trapped inside.

The labeling of the appliance complies with the provisions of the European WEEE Directive.

Ensure this product is handled correctly and avoid inappropriate waste disposal measures for this product, as this helps prevent potential negative impacts on the environment and human health. For more information on product recycling, please contact your local municipal department, your household waste disposal service center, or the store where you purchased the product.

TYPICAL CONSUMPTION TABLE

Program Instructions

1. The eco 40-60 programme is able to clean normally soiled cotton laundry declared to be washable at 40°C or 60°C, together in the same cycle, and that this programme is used to assess the compliance with the EU ecodesign legislation.
2. The wash and dry cycle is able to clean normally soiled cotton laundry declared to be washable at 40 °C or 60 °C, together in the same cycle, and to dry it in such a way that it can be immediately stored in a cupboard, and that this programme is used to assess the compliance with the EU ecodesign legislation;
3. The power consumption of the off-mode is 0.49W.
4. The most efficient programs in terms of energy consumption are generally those that perform at lower temperatures and longer duration.
5. Loading the household washer-dryer up to the capacity according to the indication for the respective programmes will contribute to energy and water savings.
6. Correct use of detergent, softeners and other additives. Do not apply excessive detergent. This may affect the washing results adversely.
7. Periodic cleaning, including optimal frequency, and limescale prevention and procedure.
8. Noise and remaining moisture content are influenced by the spinning speed: the higher the spinning speed in the spinning phase, the higher the noise and the lower the remaining moisture content.
9. The product information and QR code are reflected in the energy consumption label the product registration information can be obtained by scanning the QR code.
10. The information of standard programmes.

Programme	Selected Temperature (°C)	Rated Capacity (kg)	Maximum temperature in drum (°C)	Programme duration (h:min)	Energy consumption (kWh/cycle)	Water consumption (litres/cycle)	Remaining moisture content (%)	Maximum speed reached (rpm)
eco40-60 full load	-	8.0	26	3:38	0.455	56.0	53.90	1310
eco40-60 half load	-	4.0	27	2:48	0.335	38.0	53.90	1400
eco40-60 1/4 load	-	2.0	24	2:46	0.195	32.0	53.90	1400
Wash and Dry full load	-	5.0	27	7:59	3.220	92.0	-	-
Wash and Dry half load	-	2.5	23	5:29	1.820	63.0	-	-
cotton	20	8.0	20	2:09	0.330	110.0	58.00	1400
cotton	60	8.0	55	3:38	1.580	110.0	58.00	1400
mix synthetics	40	4.0	40	2:19	0.800	80.0	38.00	1400
speed 15'	20	1.0	20	0:15	0.050	28.0	70.00	800

The values given for programmes other than the eco 40-60 programme and the wash and dry cycle are indicative only.

The entry mode of wash and dry cycle is to select the eco 40-60 programme, and press the dry level button once.



Maximum or nominal load applies to laundry prepared pursuant to the IEC 60456 standard.



Due to deviations in terms of type and amount of laundry, spinning, power supply oscillation, and environment temperature and humidity, the program duration and power consumption values measured at the end user may differ from the ones stated in the table.

gorenje

20249567-N6020025587A