



JLAB
EPIC
WEBCAM

We love that you are rocking JLab!
We take pride in our products and fully stand behind them.



YOUR WARRANTY

All warranty claims are subject to JLab authorization and at our sole discretion. Retain your proof of purchase to ensure warranty coverage.



CONTACT US

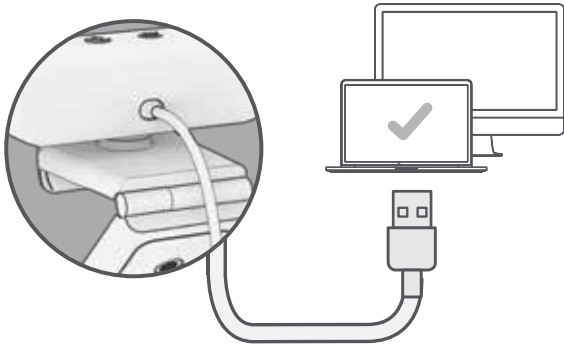
Reach out to us at support@jlab.com or visit jlab.com/contact

REGISTER TODAY
jlab.com/register
 Product updates | How-to tips
 FAQs & more

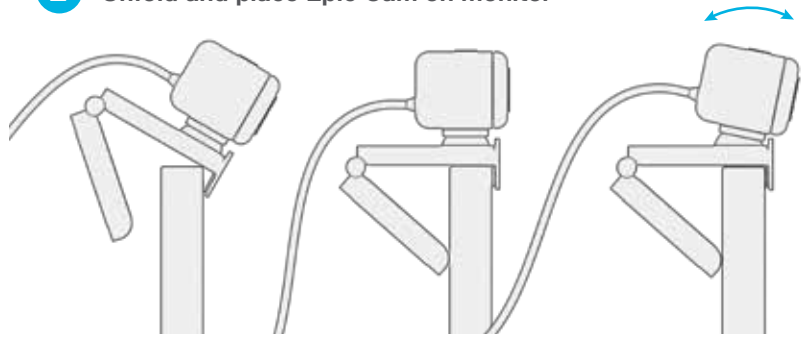
1 SETUP

Connect to your PC or Mac USB INPUT

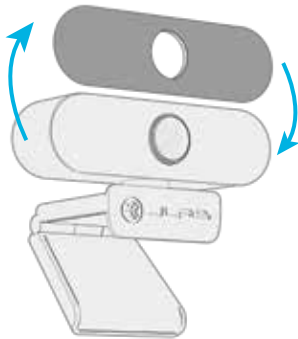
Enter your PC or Mac settings to make sure connection is established.



2 Unfold and place Epic Cam on monitor



3 Configure as desired



Swappable face plates



Threaded attachment for tripod-type mounts

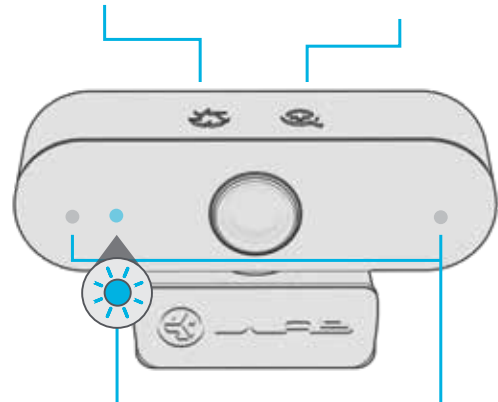
INTERFACE

Manual Exposure Button

Tap for 4 brightness levels
Press hold for more precise control

Zoom Button

Tap for 4 zoom levels
Press hold for more precise control



LED Indicator Light
Webcam active only when light is on

Dual Microphones



[Shop products](#) | [Product alerts](#) | [Burn-in your headphones](#)

JLab Store + Burn-in Tool



JLAB.COM

