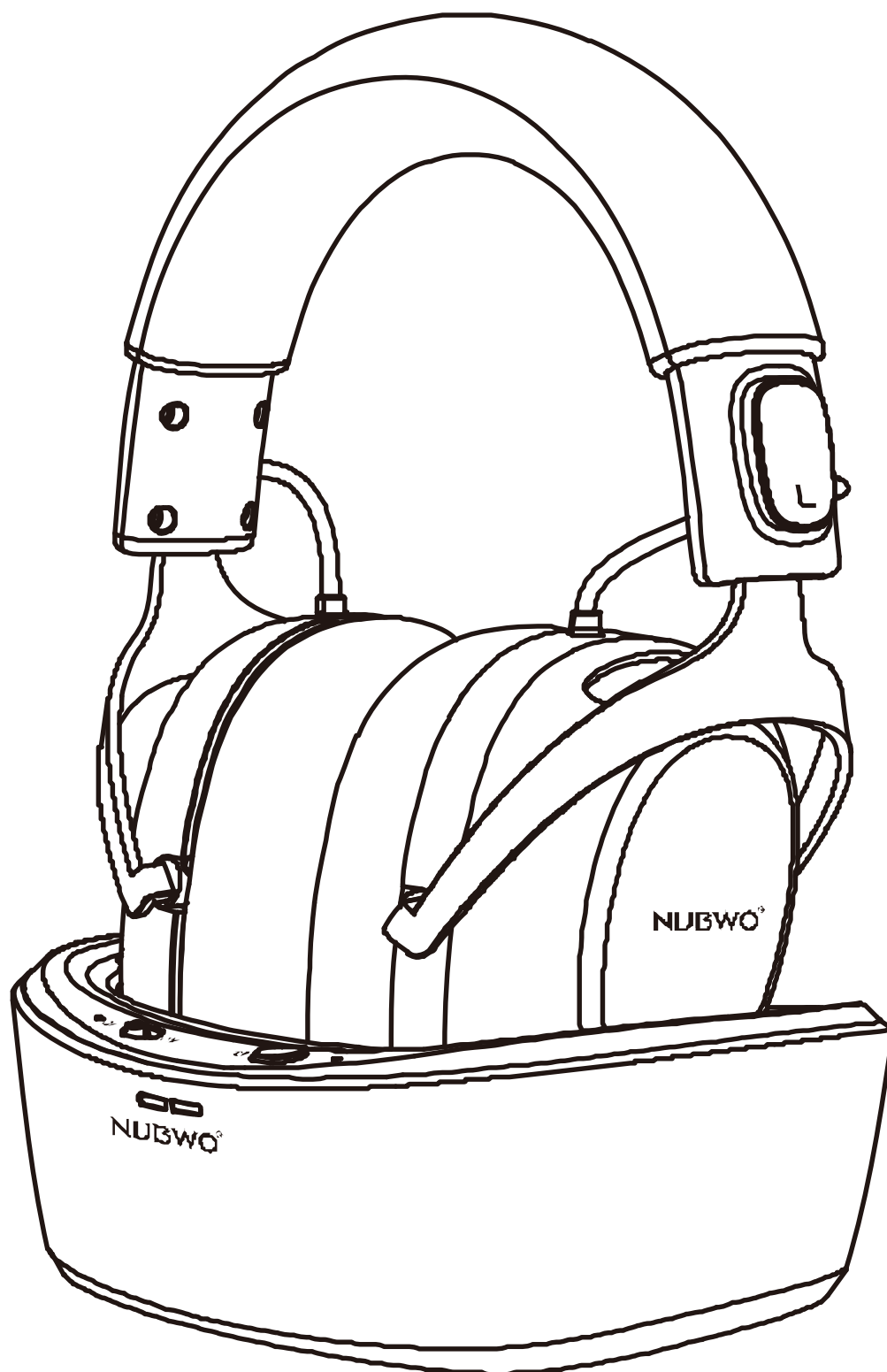


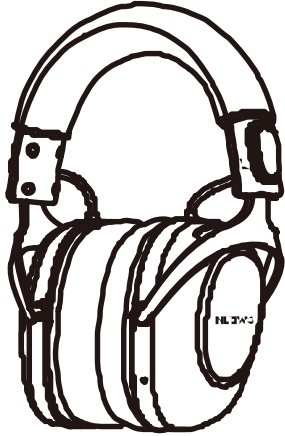
NUBWO®

TV HEADPHONES



Model: HT02

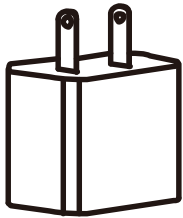
Package Contents



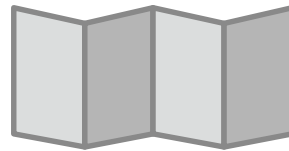
NUBWO Wireless
TV Headphones



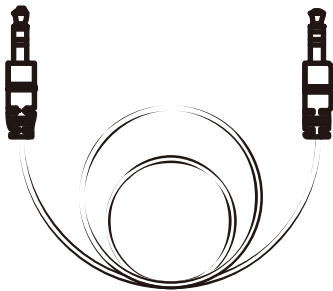
2in1 2.4GHz & Charging Donk



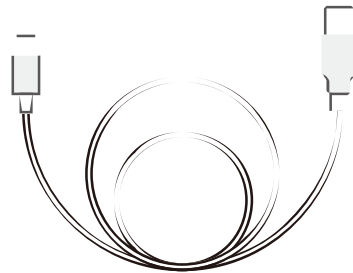
Charging Plug



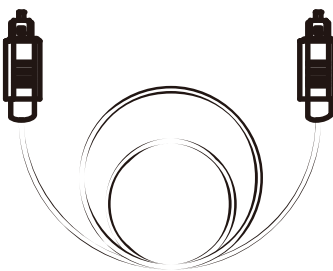
User Manual



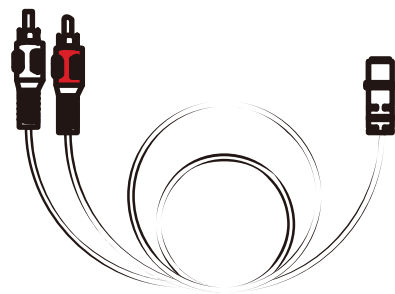
3.5mm Audio Cable



USB Type-C Charging Cable



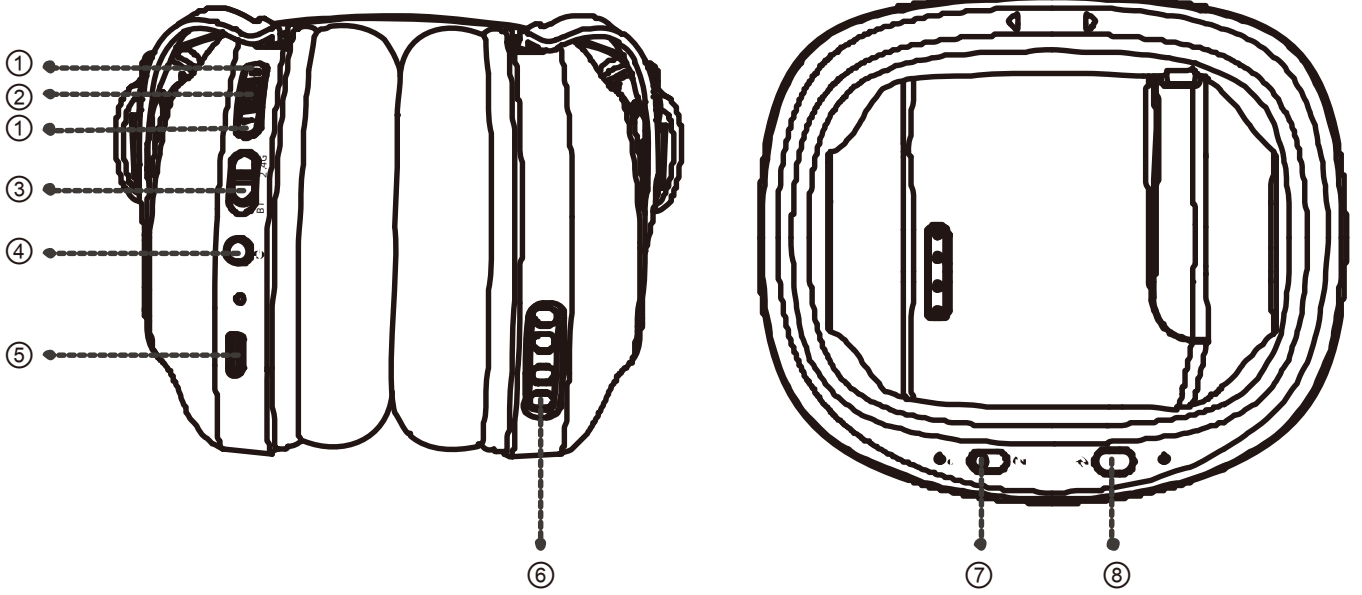
Fiber Optic Cable



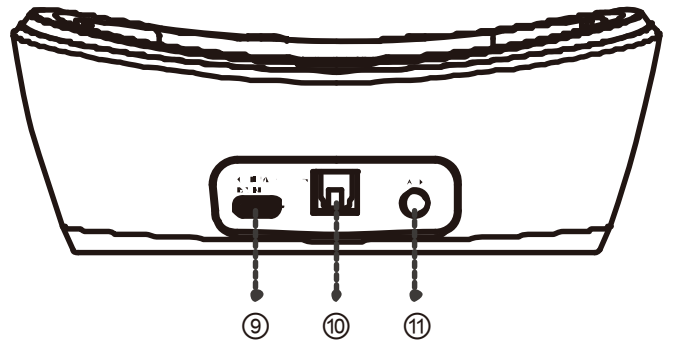
3.5mm to RCA Cable

Overview

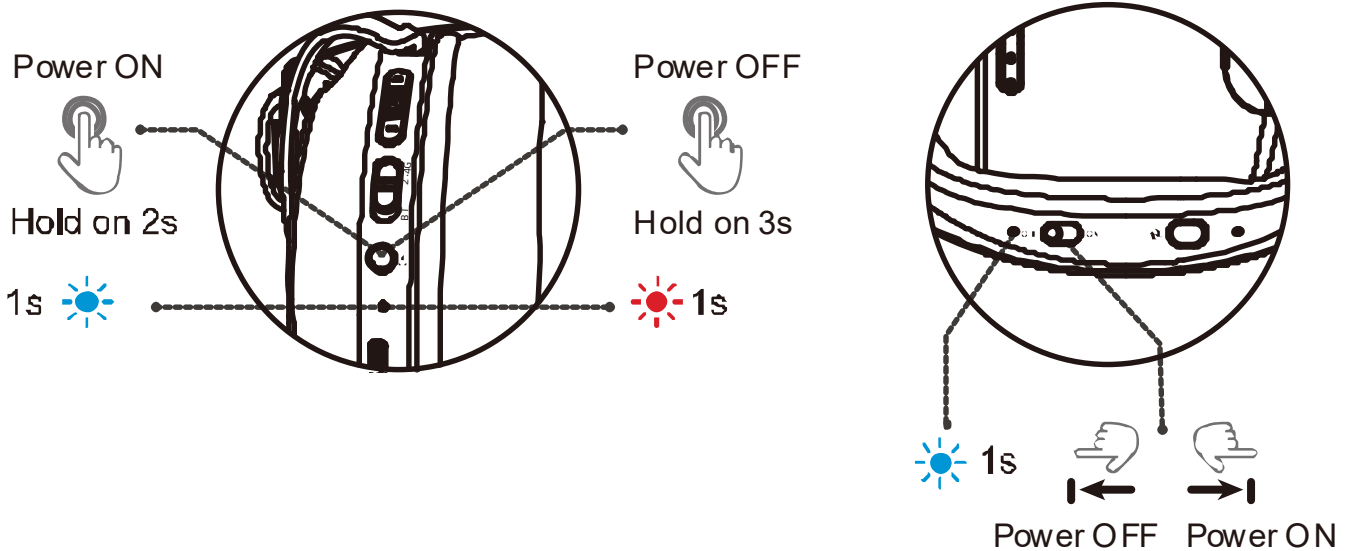
EN



1. Volume buttons
2. Multifunction button
3. Mode switch
4. Power button
5. Type-C charging port
6. Dock charging contacts
7. Dock power switch
8. Dock mode switch
9. Dock charging port
10. Optical audio port
11. 3.5mm audio jack

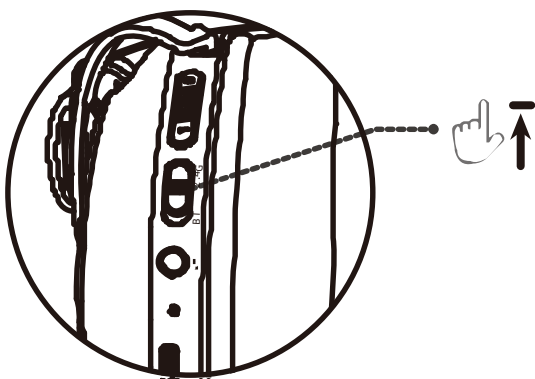
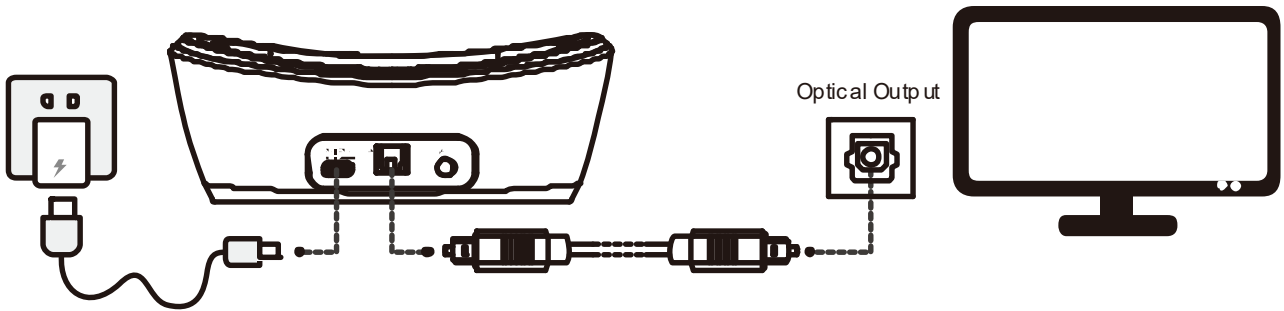
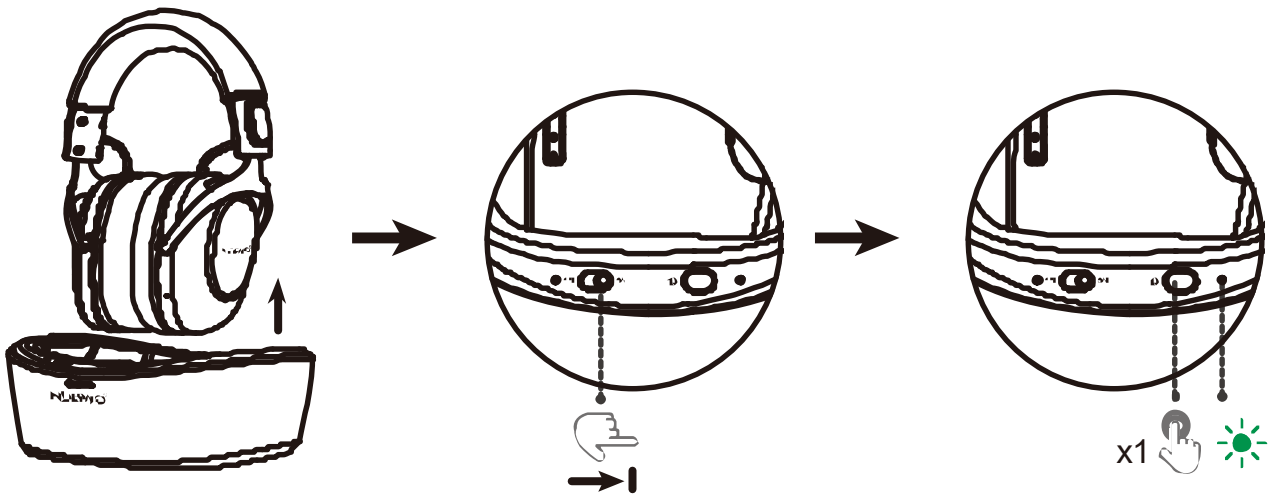


Power ON/OFF



Connection Methods

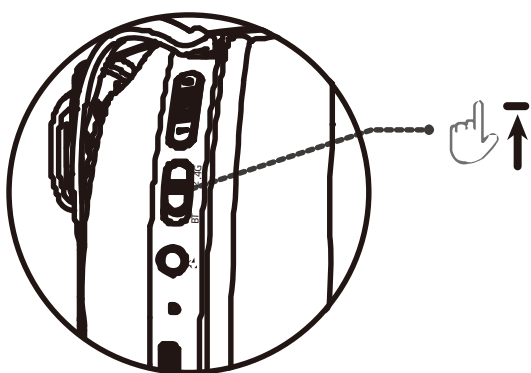
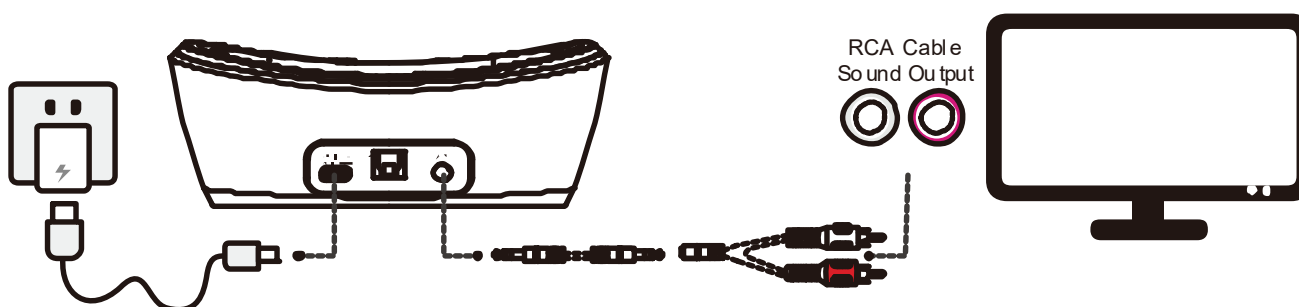
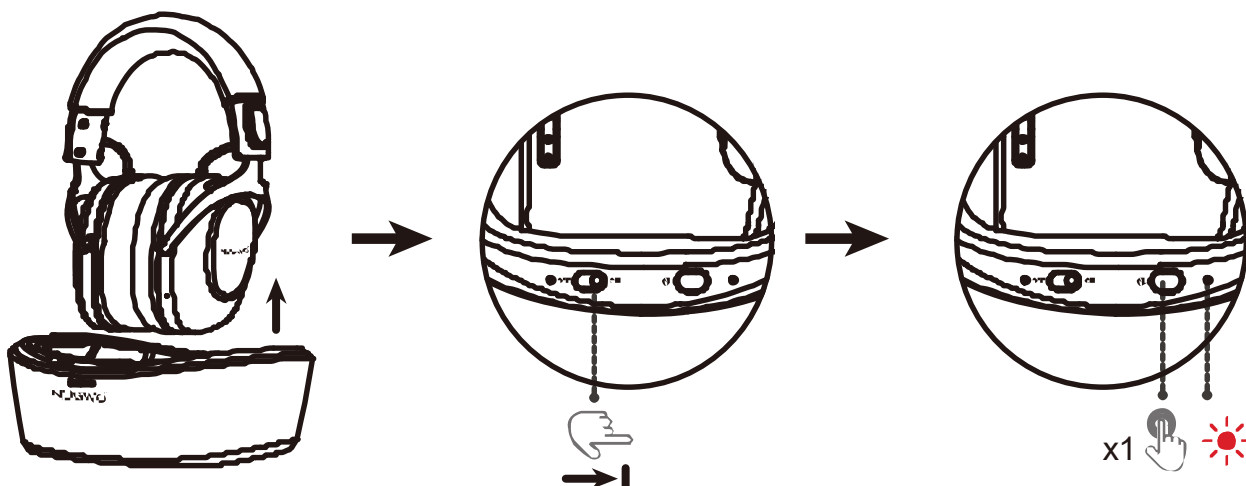
1 Fiber Optic Cable for TV



1. Pick up the headset.
2. Plug in the base station to turn it on.
3. Connect the appropriate optical cable to the device you want to connect.
4. Set the headset to 2.4 GHz mode.
(The headset will turn on automatically when you pick it up.)

Go to TV settings: Settings > Sound > SPDIF Audio Output, then select "Headphones"

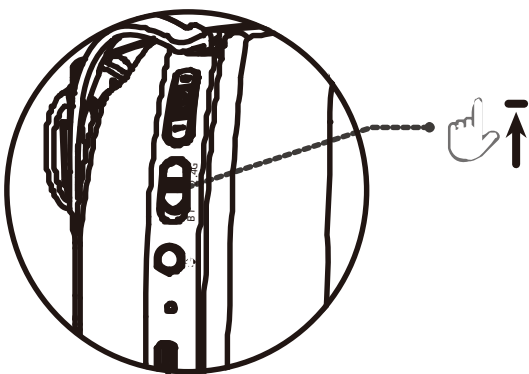
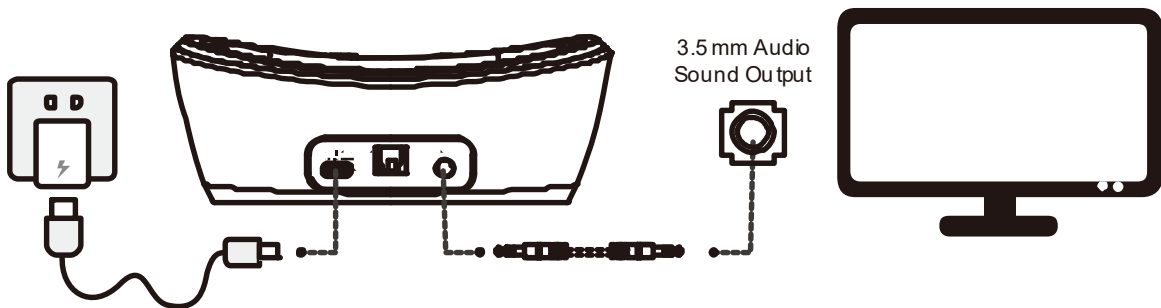
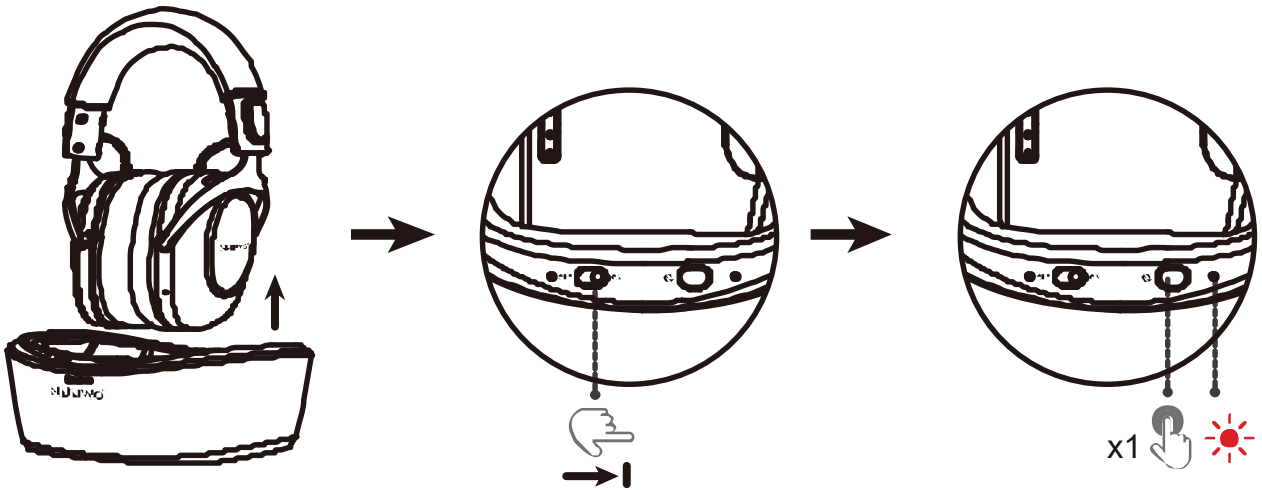
2 RCA Cable for TV



1. Pick up the headset
2. Plug in the base station to turn it on
3. Connect the 3.5mm audio adapter cable
4. Plug the corresponding RCA cable into the device you want to connect to
5. Set the headset to 2.4G mode
(The headset will turn on automatically when you pick it up)

Go to TV settings: Settings > Sound > SPDIF Audio Output, then select "Headphones"

③ 3.5mm Audio Cable for TV

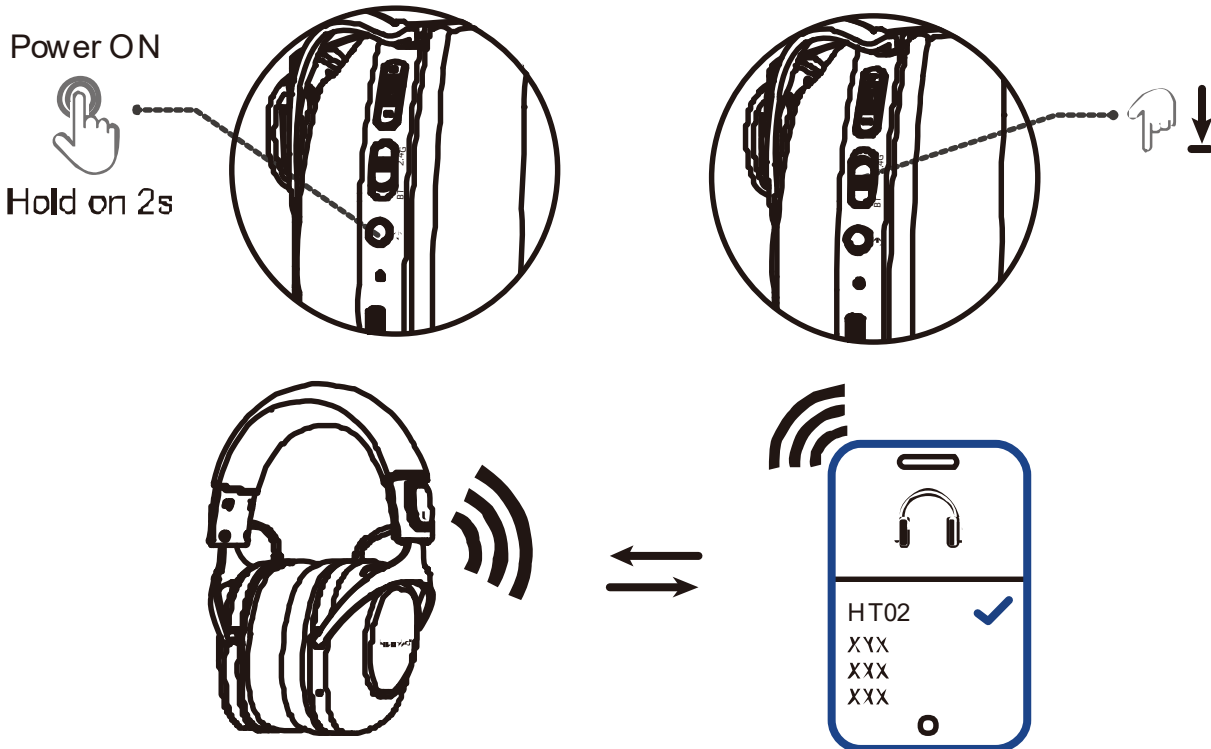


1. Pick up the headset
2. Plug in the base station to turn it on
3. Plug the corresponding 3.5mm audio cable into the device you want to connect to
4. Set the headset to 2.4G mode
(The headset will turn on automatically when you pick it up)

Go to TV settings: Settings > Sound > SPDIF Audio Output, then select "Headphones"

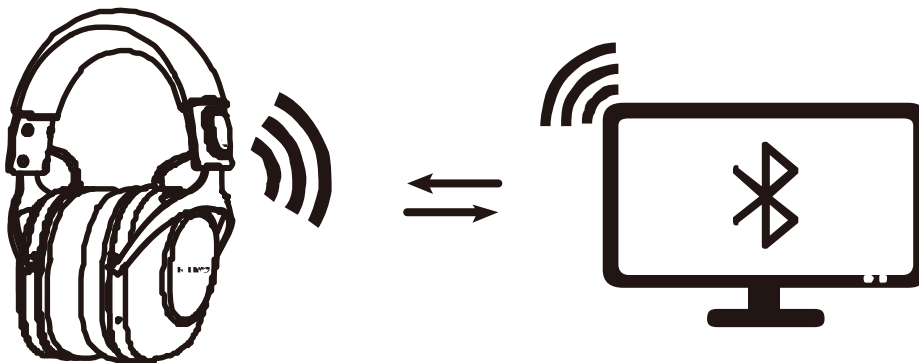
4 Bluetooth Connection

EN



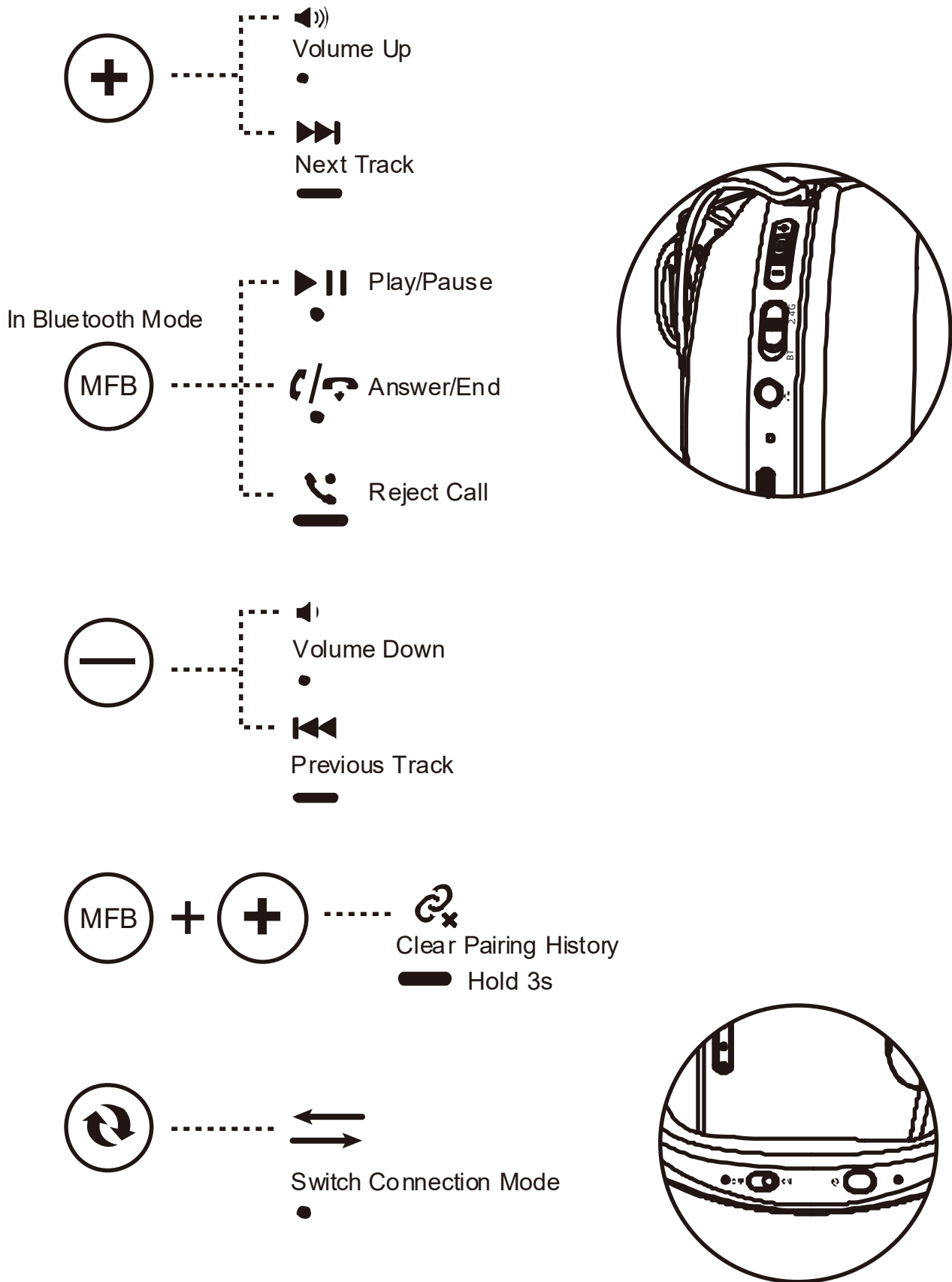
1. Turn on the headphones.
 2. Switch the headphones to BT mode.
 3. On the device you want to connect to, find “HT02” and select it to connect.
- Note: Frequent switching of modes will cause the headset connection to slow down.

Connecting Headphones to a TV via Bluetooth: Instructions



1. Access the TV's Bluetooth settings
 - ① Go to TV Settings: Settings > Sound > Audio Output;
 - ② Select “Bluetooth Speaker List” to enter the Bluetooth device search screen.
2. Turn on the headphones and switch them to Bluetooth mode. When using the headphones for the first time, they will automatically enter pairing mode upon startup; the red and blue lights will flash.
If the headphones have been connected to other Bluetooth devices, you must disconnect them before they can enter pairing mode.
3. Select HT02 from the TV's “Bluetooth Speaker List” and wait until the screen displays “Connected.”

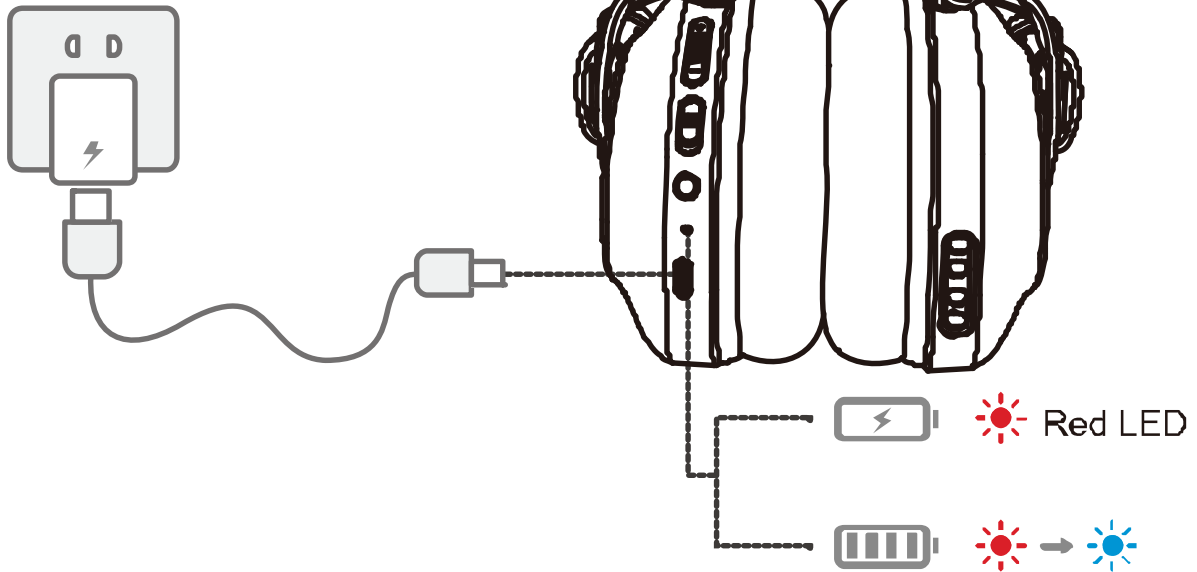
Button Controls



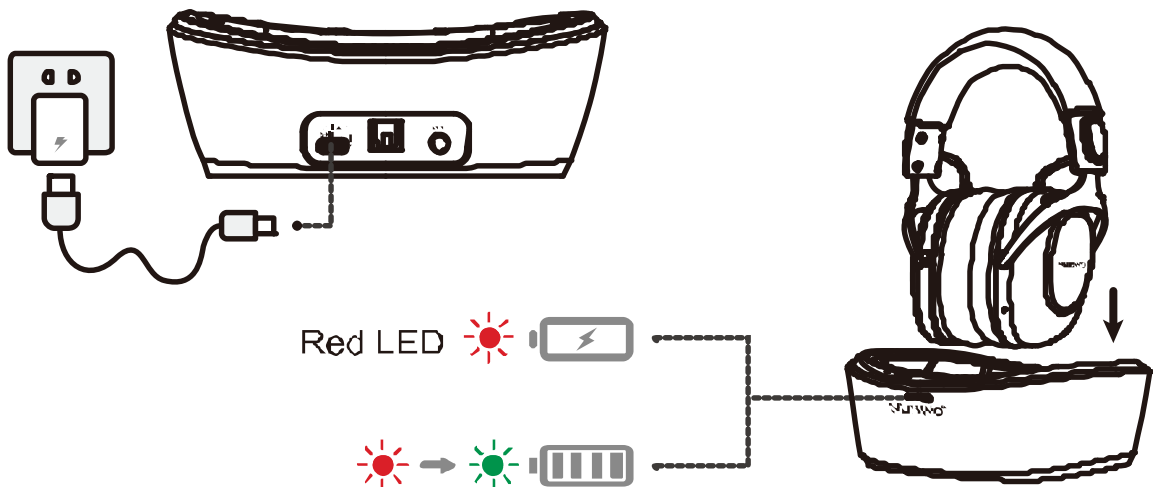
• Press x 1 ■ Hold (>1s)

Headset Charging

Output: 5V \equiv 1A



Output: 5V \equiv 1A



Note

Low Battery Reminder: When the battery level drops below 2%, you will hear a low battery reminder, and the indicator light next to the power button will flash red.

FCC Caution:

This device complies with part 15 of the FCC Rules. Operation is subject to the following two conditions: (1) This device may not cause harmful interference, and (2) this device must accept any interference received, including interference that may cause undesired operation.

Any changes or modifications not expressly approved by the party responsible for compliance could void the user's authority to operate the equipment.

NOTE: This equipment has been tested and found to comply with the limits for a Class B digital device, pursuant to Part 15 of the FCC Rules. These limits are designed to provide reasonable protection against harmful interference in a residential installation. This equipment generates, uses and can radiate radio frequency energy and, if not installed and used in accordance with the instructions, may cause harmful interference to radio communications. However, there is no guarantee that interference will not occur in a particular installation. If this equipment does cause harmful interference to radio or television reception, which can be determined by turning the equipment off and on, the user is encouraged to try to correct the interference by one or more of the following measures:

- Reorient or relocate the receiving antenna.
- Increase the separation between the equipment and receiver.
- Connect the equipment into an outlet on a circuit different from that to which the receiver is connected.
- Consult the dealer or an experienced radio/TV technician for help.

The device has been evaluated to meet general RF exposure requirement.

The device can be used in portable exposure condition without restriction.

For Dock: This equipment complies with FCC radiation exposure limits set forth for an uncontrolled environment. This equipment should be installed and operated with minimum distance 20cm between the radiator & your body.

NUBWO HT02 TV Headphones

Model: HT02

EN

Specifications:

- **Battery Type:** Lithium-ion Battery 3.7V/1000mAh
- **Playback Time:** Up to 60 hours (at 70% volume)
- **Charging Time:** Approximately 2.5 hours (from 0% to 100%)
- **Standby Time:** Up to 200 hours
- **Charging Interface:** USB-C, DC 5V/1A
- **Frequency Response:** 20Hz-20kHz
- **Sensitivity:** 105±3dB@1KHz
- **Microphone Sensitivity:** -38±2dB@1KHz(Cardiod)
- **2.4GHz Wireless Range:** Up to 10 meters (line of sight)

Key Features and Functions

There are four ways to connect the headphones

- 1. Connect using an optical cable:** Plug in the base station and turn it on, then use an optical cable to connect the base station to your device. Set both the base station and the headphones to the corresponding mode.
- 2. Connect using an RCA adapter cable:** Plug in the base station and turn it on, then use an RCA adapter cable to connect the base station. Set both the base station and the headphones to the corresponding mode.
- 3. Connecting via a 3.5mm audio cable:** Power on the base station, then use a 3.5mm audio cable to connect the base station to your device. Set both the base station and the headphones to the corresponding mode.
- 4. Bluetooth connection:** After turning on the headphones, set them to BT mode, then search for and connect to your device.

The headset also supports a **Dual Mode** feature:

- In 2.4GHz wireless mode, your phone can simultaneously connect to the headset via Bluetooth. When there's an incoming call, the headset will switch from the 2.4GHz wireless track to the phone's track, with an incoming call ringtone notification.
- To answer the call, press the power button once; press again to end the call. The headset will then switch back to the 2.4GHz wireless track.
- You can also long-press the power button for 1.5 second to directly end the call.

How to Use the HT02

When using these headphones for the first time, please allow some time for automatic pairing. Plug the charging dock into a power source, switch it to the appropriate mode, turn on the headphones, and wait 1 to 3 minutes for the headphones to automatically pair with the dock.

Note: If you wish to speed up the pairing process, or if you have replaced the charging base adapter, turn off the earbuds, then press and hold the power button for 5 seconds to put them into pairing mode and reconnect.

When the power indicator light on the charging base changes from flashing to steady, it indicates that the earbuds have successfully connected.

Sleep Mode: If the headset is not connected to any device, it will automatically shut down after 10 minutes.

Low Battery Reminder: When the battery level drops below 2%, you will hear a low battery reminder, and the indicator light next to the power button will flash red.

Troubleshooting

No sound when connecting the TV

Just check these 2 points for a quick fix:

1. Are the headphones successfully connected to the base?
 - Blue light steady = Connected; flashing light = Not connected → Repeat the pairing steps
2. Is the TV's audio signal working properly?
 - Check that all cables are securely plugged in and not loose
 - For optical connections only: Make sure the TV's audio format is set to PCM
 - For more troubleshooting solutions and frequently asked questions, please refer to the official external link guide

Bluetooth unable to reconnect

1. Before reconnecting, make sure the transmitter is still turned off.
2. Once the headphones are turned on, they will automatically connect to the last paired Bluetooth device.
3. If they do not connect automatically: Check that the mode switch is set to Bluetooth mode, and verify that they are not already connected to another device, such as a smartphone.
4. If you still cannot connect: Select "HT02" again from the TV's Bluetooth list to pair.

Synchronizing Headphone and TV Speaker Audio

Some models support this by default without requiring additional setup.

Models requiring manual setup:

A: Samsung TV manufactured before 2024

- 1: Go to Settings > “Sound”
- 2: Set TV Output to “TV Speakers”
- 3: Open Expert Settings
- 4: Change the Digital Output Format to PCM

This will allow audio to play simultaneously through both the TV speakers and the optical output.

Do not select “Receiver (Optical)” as the audio output, otherwise the TV speakers will be muted.

B: Some LG TV

Enable synchronized audio output; set the output to:

Optical output device + TV speakers: Audio can be heard simultaneously through the built-in TV speakers and an external audio device connected to the optical digital audio output port.

Bluetooth Device + TV Speakers: Sound can be output simultaneously through the TV speakers and Bluetooth speakers.

C: Sony TV:

Look for “Dual Audio Output” in the sound settings to enable simultaneous playback

Maintenance and Cleaning

Warranty Information:

- The product comes with a 1-year warranty. During this period, any faulty units will be replaced rather than repaired.

Cleaning and Maintenance:

- The headset should not be submerged in water. Use a soft, slightly damp cloth for cleaning if necessary.

Contact Information

Website: www.nubwo.com
www.nubwotech.com

Email: support@nubwotech.com



@nubwotech



@nubwotech



@nubwo_tech

If you wish to share your user experience with the NUBWO HT02 wireless gaming headset, we've made it simple and convenient for you. All you need to do is open your camera and scan the QR code below to share your thoughts quickly (Please note that you need to have the Amazon APP installed to do this). We're looking forward to hearing your feedback, and thank you for your support.



Auriculares para televisión NUBWO HT02

Modelo: HT02

ES

Información básica:

- **Especificación de la batería:** Batería de iones de litio 3.7V/1000mAh
- **Tiempo de duración de la batería:** 60 horas (70% de volumen)
- **Tiempo de carga:** 2.5 horas (del 0% al 100%)
- **Tiempo de espera:** 200 horas
- **Interfaz de carga:** Interfaz USB C, DC 5V/1A
- **Respuesta de frecuencia:** 20Hz-20kHz
- **Sensibilidad:** $105 \pm 3\text{dB}@1\text{KHz}$
- **Sensibilidad del micrófono:** $-38 \pm 2\text{dB}@1\text{KHz}$ (cardioide)
- **Rango inalámbrico de 2,4GHz:** 10 metros en línea recta

Funciones y características principales del producto

Los auriculares disponen de cuatro métodos de conexión

- 1. Conexión mediante cable de fibra óptica:** encienda la base, conecte la base al dispositivo mediante el cable de fibra óptica y ajuste la base y los auriculares al modo correspondiente.
- 2. Conexión mediante cable adaptador RCA:** encienda la base, conecte la base mediante el cable adaptador RCA y ajuste la base y los auriculares al modo correspondiente.
- 3. Conexión mediante cable de audio de 3,5 mm:** encienda la base, conecte la base al dispositivo con el cable de audio de 3,5 mm y ajuste la base y los auriculares al modo correspondiente.
- 4. Conexión Bluetooth:** después de encender los auriculares, ajústelos al modo BT y busque el dispositivo para conectarse.

Modo en línea dual:

- En el modo inalámbrico de 2.4GHz, el teléfono móvil puede conectarse a los auriculares al mismo tiempo a través de Bluetooth.
- Cuando hay una llamada entrante, los auriculares cortarán la pista de sonido del modo inalámbrico de 2.4GHz y cambiarán a la pista de sonido del teléfono móvil, y habrá un tono de llamada entrante. En este momento, puede presionar el botón de encendido una vez para responder y presionar el botón de encendido una vez más para colgar. Los auriculares volverán a la pista de sonido del modo inalámbrico de 2.4GHz en este momento. También puede colgar la llamada directamente manteniendo presionado el botón de encendido durante 1.5 segundos.

Cómo utilizar este producto

La primera vez que utilice estos auriculares, reserve un tiempo para el emparejamiento automático. Enchufe la base a la corriente, conecte el cable, seleccione el modo correspondiente, encienda los auriculares y espere entre 1 y 3 minutos para que se emparejen automáticamente con la base.

Nota: Si desea acelerar el proceso de emparejamiento, o si ha cambiado el adaptador de la base, deberá apagar los auriculares y mantener pulsado el botón de encendido durante 5 segundos para que entren en modo de emparejamiento y se vuelvan a conectar.

Cuando el indicador de alimentación de la base pase de parpadear a permanecer encendido, significará que los auriculares se han conectado correctamente.

Modo de reposo: Cuando los auriculares no están conectados a ningún dispositivo, se apagarán automáticamente después de 10 minutos.

Advertencia de batería baja: Cuando la batería está por debajo del 2%, oírás un aviso de batería baja y el indicador luminoso junto al botón de encendido parpadeará en rojo.

Indicador de silenciamiento del micrófono: Cuando el micrófono está encendido, la luz es verde. Cuando el micrófono está apagado, la luz se apaga.

Solución de problemas

No se oye nada al conectar el televisor

Solo hay que comprobar dos cosas para resolverlo rápidamente:

1. ¿Están conectados correctamente los auriculares a la base?
 - Luz azul fija = conectado; luz parpadeante = no conectado → Vuelve a seguir los pasos de emparejamiento
2. ¿Es normal la señal de audio del televisor?
 - Comprueba que todos los cables estén bien enchufados y no haya conexiones sueltas
 - Solo para conexiones por fibra óptica: confirma que el formato de audio del televisor esté configurado en PCM
 - Para más soluciones de resolución de problemas y preguntas frecuentes, consulta la guía en el enlace externo oficial

El Bluetooth no puede volver a conectarse

1. Antes de volver a conectar, asegúrate de que el transmisor siga apagado.
2. Una vez encendidos los auriculares, se conectarán automáticamente al último dispositivo Bluetooth emparejado.
3. Si no se conectan automáticamente: comprueba que el interruptor de modo esté en la posición de Bluetooth y que no estén conectados a otro dispositivo, como un teléfono móvil.
4. Si sigue sin conectarse: vuelve a seleccionar “HT02” en la lista de dispositivos Bluetooth del televisor para emparejarlo.

Sincronización del sonido entre los auriculares y los altavoces del televisor

Algunos modelos lo admiten de forma predeterminada, sin necesidad de configuraciones adicionales

Modelos que requieren configuración manual:

A: Televisores Samsung anteriores a 2024

- 1: Ve a “Configuración” > “Sonido”
- 2: Configura la salida del televisor en “Altavoces del televisor”
- 3: Abre la configuración avanzada
- 4: Cambia el formato de salida digital a PCM

De esta forma, el sonido se reproducirá simultáneamente a través de los altavoces del televisor y la salida óptica.

No seleccione “Receptor (óptico)” como salida de sonido, ya que de lo contrario se silenciarán los altavoces del televisor.

B: Algunos televisores LG

Active la salida de sonido sincronizada; configure la salida de la siguiente manera:
Dispositivo de salida óptica + altavoces del televisor: el sonido se puede escuchar simultáneamente a través de los altavoces integrados del televisor y de un dispositivo de audio externo conectado al puerto de salida de audio digital óptica.
Dispositivo Bluetooth + altavoces del televisor: los altavoces del televisor y los altavoces Bluetooth pueden emitir sonido simultáneamente.

C: Televisores Sony:

Busque “Salida de audio dual” en los ajustes de sonido para activar la reproducción sincronizada

Mantenimiento y limpieza del producto

Información sobre la garantía:

- Período de garantía del producto: 1 año, solo se cambia, no se repara

Limpieza y mantenimiento:

- Precaución: No puede ser empapado en agua

Información de contacto:

Sitio web: www.nubwo.com
www.nubwotech.com

Correo electrónico: support@nubwotech.com



@nubwotech



@nubwotech



@nubwo_tech

Si desea compartir su experiencia de usuario con los auriculares para juegos inalámbricos NUBWO HT02, lo hemos hecho simple y conveniente para usted. Todo lo que necesita hacer es abrir su cámara y escanear el código QR a continuación para compartir rápidamente sus pensamientos (Tenga en cuenta que necesita tener la aplicación Amazon instalada para hacer esto). Esperamos con interés escuchar sus comentarios, y gracias por su apoyo.

