

User 's manual
AI智能录音笔
使用说明书



产品安全信息

(1) 本设备不带电源适配器，需充电时，请配套使用已获CCC证书并符合相关标准的电源适配器。

(2) 请在温度0°C-35°C范围内使用本设备，并在温度-20°C- +45°C范围内存放设备及配件，当环境温度过高或过低时，可能会引起设备故障。

(3) 请勿将设备暴露在高温处或发热设备周围，如日照、取暖器、微波炉、烤箱或热水器等。

(4) 当充电完毕或未充电时，请断开充电器与设备的连接并从电源插座上拔掉充电器。

(5) 设备配有不可拆卸的内置电池，请勿自行更换电池，以免损坏设备。

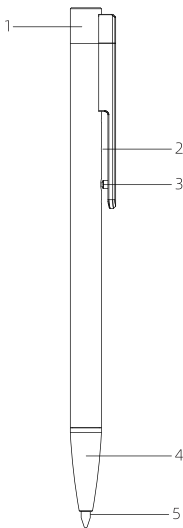
(6) 请按照当地规定处理本设备、电池及相关配件，不可将他们作为生活垃圾处理。

(7) 本机没有防水功能，不应遭受水滴或水溅。

警告：电池（电池包或组合电池）不得暴露在诸如日照、火烤或类似过热的环境中；

注意：如果电池更换不当会有爆炸的危险，只能用同样类型或等效类型的电池来更换；

外型图示及按键功能



注:外型图片以实物为准!

(1) USB帽/USB接口 (type c)

(2) 指示灯

(3) 电源开关/笔夹

(4) 伸缩笔头

(5) 书写笔芯

指示灯说明

- 1、开机蓝牙待连接：蓝灯闪烁
- 2、蓝牙已连接：蓝灯长亮
- 3、录音：红灯长亮
- 4、录音暂停：红灯闪烁
- 5、低电：紫色灯闪烁后进入关机
- 6、充电：紫色灯长亮，充满后熄灭

APP操作说明

●**开机**：短按一下电源开关（笔夹末端），蓝灯闪烁，表示录音笔开机并进入了蓝牙待连接状态。

●**关机**：录音笔在闲时待机状态下（非录音状态），默认为5分钟自动关机。

●**录音/保存**：录音笔在待机状态下长按“**电源/录音开关**”键进入录音状态，此时录音笔进入录音，指示灯为红灯长亮；在录音过程中再次长按“**电源/录音开关**”键停止并保存当前录音。

录音过程中，指示灯亮起30秒后，在没有任何操作的情况下自动转为熄灭状态，再次短按电源开关即可查看录音笔的实时状态。

●**打开USB笔帽**

本机USB位置位于录音笔的最顶部，可直接拔出USB笔帽即可。

●**书写笔芯的伸出与隐藏**

本机的书写笔尖是伸缩设计的，在录音笔最下方的伸缩笔头位置，按住向右旋转是为打开书写笔尖，按住向左旋转是为隐藏书写笔尖。

●**系统复位**

如果系统出现死机或者无法操作的情况下，可通过长按“**电源/录音开关**”键 13 秒进行系统强制复位重启。

●**更换笔芯**

本机支持更换笔芯，直接握住录音笔的伸缩笔头位置，向左旋转可将伸缩笔头取出后，将笔芯旋转出来后，即可更换笔芯。

●**充电**

充电前将适配器接入电源，再将录音笔USB接口直接插入到电源适配器的TYPE-C接口上，如果充电器端没有TYPE-C的插口，也可将随机配送的 USB 线，母头一端插入到本机的 USB 接口上，另一端大头插入充电器的 USB 接口后即可充电，正常状态下 2小时左右可充满电，请使用符合国家标准且通过CCC认证的DC 5V/1000-mA的电源适配器。

注：所选用的充电器规格必须符合以下要求，否则出现意外或故障本公司则视为人为性损坏。

输入：AC 110-240V 50/60Hz Max:150mA

输出：DC 5V/1A

● APP 下载以及安装

本录音笔可单独录音使用，也可以使用蓝牙连接“VocMas”APP使用。

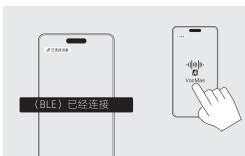
APP安装方法：

直接在IOS手机App Store或者Android手机应用市场里搜索VocMas后，下载“VocMas”APP并按照指引安装即可，也可使用手机微信、QQ扫描上方的二维码，下载“VocMas”APP并按照指引进行安装。



● 蓝牙连接

录音笔开机后，会直接进入蓝牙待连接状态。手机登录“VocMas”APP后，点击APP中左上角菜单栏中的“+未连接”菜单按钮，查找设备并进行蓝牙连接，录音笔首次与APP连接成功后，APP会弹出“(BLE) 已经连接”的提示框，并且录音笔显示蓝牙已连接的状态。

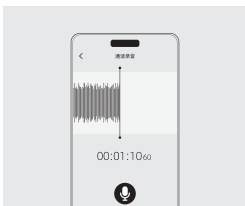


● 语音录音

①笔端发起录音：录音笔在和APP连接后，长按录音笔的“电源/录音开关”键3秒，录音笔进入到录音模式，APP也同步会进入到录音状态。

②APP端发起录音：录音笔与APP连接状态下，点击APP底部菜单栏中“🎤”按钮，录音笔进入录音模式，APP同时进入录音状态。

③结束录音：长按录音笔的“电源/录音开关”键即可结束并保存录音。也可直接轻触APP底部的“停止”菜单按钮结束并保存录音。



●文件同步传输

①**蓝牙传输**：录音笔和APP未连接时的离线录音文件可在与APP连接时进行上传至APP端，录音笔和APP连接后，系统将自动检测录音笔笔端存储还未传输到APP的文件，当检测到待传输的录音文件后，系统会提示检测设备有新文件是否同步，点击确定后，将自动通过蓝牙上传到APP。



②**WiFi快传**：本机支持WiFi快传功能，离线较大的录音文件可选择快传模式，录音笔与APP连接后，系统自动检测录音笔笔端存储还未传输到APP的文件，当检测到待传输的录音文件后，系统提示检测设备有新文件是否同步，点击确定后，将自动通过蓝牙上传到APP，此时可点击APP传输进度条右侧的“📶”菜单按钮，进行本机WiFi热点与手机连接，连接成功后，即可进行WiFi快传模式。



●录音文件播放与管理

①**录音文件播放**：保存的录音文件可在APP上直接播放，点击打开APP上所保存的音频文件后，点击文件下方的播放按钮即可开始当前录音文件的播放。

②**录音文件转写**：点击打开APP上所保存的音频文件后，点击“立即转写”按钮，系统将对当前的录音文件进行文字转写；转写完成后可自动生成总结、思维导图等；

③**转写内容修改**：文件转写完成后，点击进入转写后的文件，再点击APP右上角“✎”即可进入到文件编辑状态，可直接修改文件的名称以及文件的内容，修改好后点击“√”予以保存。

④**转写内容翻译**：文件转写完成后，可对转写内容进行翻译，点击进入转写后的文件，再点击APP右上角“🌐”即可进入到翻译语言选择页面，选择需要翻译的语言点击转写翻译即可。

技术规格

产品名称	AI智能录音笔
外形尺寸	152mm×9.6mm
麦克风(环境录音)	内置阵列式硅麦麦克风
蓝牙	BLE 蓝牙 5.0
WiFi	2.4G
手机系统	Android 8.0/ ios 13.0及以上
APK 语言支持	支持多国语言，默认为中文
APK	支持语音转写、总结、思维导图，AI智能问答
USB 充电接口	标准TYPE C 公头，支持数据传输导出；
存储介质	内置内存
电池	3.7V/190mAh 聚合物电池
连续录音时间	约 19 小时
充电时间	约 2 小时（使用 5V 1A 充电器）
录音格式	WAV/OPUS
录音品质	WAV:256kbps OPUS: 32Kbps
工作温度	-5℃→ 45℃
支持电脑操作系统	WINDOWS XP/VISTA/WINDOWS 10/Windows11 及以上

有毒有害物质或元素名称及含量标识格式

部件名称	有毒有害物质或元素					
	铅 (Pb)	汞 (Hg)	镉 (Cd)	六价铬 (Cr6+)	多溴联苯 (PBB)	多溴二苯醚 (PBDE)
壳料、结构件	0	0	0	×	0	0
PCBA 及处理器	×	0	0	0	0	0
USB 线	0	0	0	0	0	0
电池	0	0	0	0	0	0
包装材料	0	0	0	0	0	0

0：表示该有毒有害物质在该部件所有均质材料中含量均在 GB/T2672-2011 规定的限量要求以下。

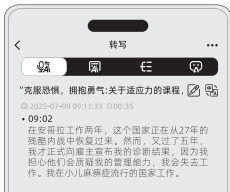
×：表示该有毒有害物质至少在该部件的某一均质材料中的含量超出GB/T26572-2011 规定的限量要求。

（企业可以在此处，根据实际情况对表中打“X”的技术原因进一步说明）

产品标识中标示的环保期限，在对应的期限内正常使用的前提下不会发生外泄或突变，电子信息产品用户使用该电子信息产品不会对环境造成严重污染或对其人身、财产造成严重损害。

注：本产品 90%的部件采用无毒无害的环保材料制造，含有毒有害物质或元素的部件皆因全球发展水平限制而无法实现有毒有害物质或元素的替代。

⑤**文件分享与导出**：点击打开APP上所保存的音频文件后，再点击APP右上角菜单栏中的“...”菜单键，选择“导出”后即进入文件的分享与导出菜单，选择分享链接后，可将整个文件通过微信、QQ、邮件等主流媒体分享发送。选择导出菜单，即可选择当前的音频文件、转写、总结或思维导图可通过微信、QQ、蓝牙等方式发送。



● 文件删除

①**单个文件删除**：在APP端可直接操作删除录音文件，在文件列表状态下找到您想要删除的文件，向左滑动后弹出操作菜单，分别有：删除、编辑、批量选择三个菜单，选择“删除”菜单后可进入到删除范围选项菜单，选择仅删除本地音频即可仅删除当前APP文件。选择删除本地及录音笔音频即将当前文件彻底删除（录音笔端以及APP端均删除）。

②**批量文件删除**：在APP端文件列表状态下，向左滑动后弹出操作菜单，选择“批量选择”菜单，系统会弹出所有录音文件列表，您可点击全选或者逐条选择您想要删除的文件后点击删除后可进入到删除范围选项菜单，选择仅删除本地音频即仅删除批量选择的APP文件。选择删除本地及录音笔音频即将当前所选择的文件彻底删除（录音笔端以及APP端均删除）

● 设置

APP上点击“已连接设备”即可进入到设置菜单，可实时查看录音笔的电量、内存使用状态以及固件版本。

私密设置：设备默认的是禁用U盘模式，如需录音设备通过USB线连接电脑，可以将禁用U盘模式选择关闭，随后使用随机配送的磁吸USB数据线去连接电脑，此时电脑将读取本机的内存信息进入U盘模式。

高级设置：分别有录制原始WAV文件开关、空闲关机时间设置、恢复初始设置、固件升级几个设置菜单；

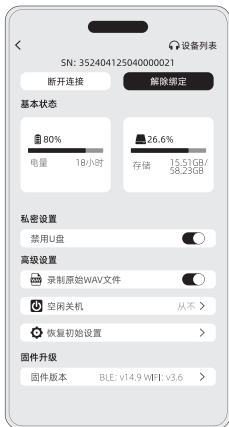
①**录制原始WAV文件开关**：本开关打开后，本机录音时会自动产生原始的WAV格式的录音文件。

②**空闲关机**：可设置本机在空闲状态下的关机时间设置，分别有5分钟、15分钟、30分钟、1小时、5小时以及从不关机选项，可根据需要进行设置。

③**恢复初始设置**：点击操作恢复初始化设置设备会将设备内的所有数据全部

删除并恢复到出厂时设置。需要恢复时点击还原即可删除设备内的所有数据并恢复到出厂时设置。

④**固件升级**：本机支持OTA在线升级，当有新的固件发布时，点击固件版本即可检测本机的固件是否为最新的，如果有新的固件版本时，本机将自动连接WiFi热点后进行固件升级更新。



● 解除绑定

录音笔只能绑定一台手机，若需要更换手机进行重新绑定，需要先将本设备进行解除绑定。APP进入“已连接设备”点击“解除绑定”菜单，系统会弹出“解除绑定是否删除设备中的音频”选择“是”则会对录音笔内存下的所有录音文件进行删除后解绑，选择“否”则保留录音笔内存下的录音文件并解绑，可根据需要进行选择并解绑。

附件

本产品包括以下主机及附件，购买时如有缺少，请于当地经销商联系。

- 1.录音笔主机 1 支
- 2.用户手册及保修卡 1 本
- 3.专用USB 连接线 1 条
- 4.替换笔芯 4 支

注：以上附件如有变更，请以包装盒内实物为准！

声明

请用户务必在使用过程中自行对资料备份,本公司对于因软件,硬件的误操作,产品维修,电池更换或其它意外情况所引起的个人数据资料的丢失和损坏不负任何责任,也不对由此造成的其它间接损失负责.同时我们无法控制用户对本手册可能造成的误解,因此,本公司将不对在使用本手册过程中可能出现的意外损坏负责,并不对因使用产品而引起的第三方索赔负责。(本机系统软件会占一部分容量空间,与标称容量会有一点差异属于正常现象)

产品三包服务条例

- 一、三包服务期限自购买之日起,以发票开具日期为准。
- 二、产品的三包服务期限:主机15天内保换,十二个月保修,线材配件一个月保换,随产品附送配件不在保修范围内。
- 三、产品在三包期内正常使用和维护下,由本机元器件所引发的故障,由经销商技术人员检验确认,可免费维修及更换零配件。
- 四、以上保修内容仅限于三包服务条例所写的三包期内所提供的服务。如有问题请在相应的时间内与经销商联系。
- 五、以下情况不在三包范围内:
 - 1.非正品;
 - 2.超过三包有效期的、涂改三包凭证,序列号与产品本身号码不符,及产品本身无序列号;
 - 3.一切人为因素损坏,包括非正常情况下使用,未按说明书使用和保管所引起的损坏等;
 - 4.用户私自拆机,自行维修,改装或者未经制造商授权过的单位维修过的,没有保修卡及有效单据的;
 - 5.因不可抗力造成的损坏;
 - 6.购机后自行运输或在恶劣的环境下(油烟、热、尘土液体等)使用产生的故障。
- 六、制造商不对用户的特殊、意外或间接损失负责。
- 七、已经停产的产品,可能因配件不足而无法修复,这种情况下,对保修范围内的产品允许置换同等价值其他产品,不在保修范围内产品将无法提供维修服务。
- 八、制造商对偶然发生的或随之而来的损坏或预计会得到的利益或利润的损失,由于使用或无法使用产品导致的工作停止或数据的损失或损坏等情况不负法律责任。同时,对故障产品的维修过程会造成产品内存存储的内容丢失,请客户事先备份,制造商不负责赔偿使用或维修过程中任何因数据丢失而导致的损失,也不对由此而造成的其它间接损失负责。
- 九、本三包服务条例所有条例解释权归制造商所有。
- 十、需要送修时将产品及其包装盒与填写完整的保修卡及购货证明(如发票、收据),一起送往或邮寄到制造商指定地区进行维修服务,运输费由用户承担。

本保修条例仅适用于中国大陆。

产品三包凭证：

用户信息：

姓名_____电话_____

联系地址_____

SN号_____

故障描述_____

购买渠道_____

订单编号_____

产品资料



如需售后服务，请先及时联系售后渠道客服或电话联系我们的售后客服解答。具体操作时，请详细填写此卡，并随同产品一起寄回。

AI voice recorder User Manual



Product Safety Information

(1) Please use the device within the temperature range of 0 °C-35°C, and store the device and accessories within the temperature range of -20°C- +45°C. When the ambient temperature is too high or too low, it may cause device failure.

(2) Do not expose the device to high temperatures or around heat generating devices such as sunlight, heaters, microwave ovens, ovens or water heaters.

(3) When charging is complete or not charging, disconnect the charger from the device and unplug the charger from the power outlet.

(4) The device is equipped with a non-removable built-in battery. Please do not replace the battery by yourself to avoid damaging the device.

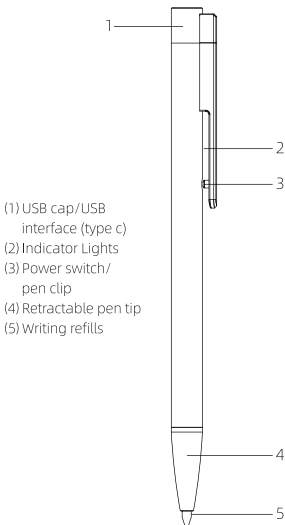
(5) Please dispose of this device, battery and related accessories in accordance with local regulations. Do not dispose of them as domestic waste.

(6) This device is not waterproof and should not be exposed to water drops or splashes.

Warning: Batteries (battery Packs or Combined Batteries) Must Not Be Exposed to Excessive Heat Such as Sunlight, Fire or Similar Environments;

Note: There is a risk of explosion if the battery is incorrectly replaced. Replace only with the same or equivalent type.

Appearance icon and key function



Note: The appearance pictures are subject to the actual product!

Indicator Lights

1. Power on, Bluetooth connection pending: Blue light flashes
2. Bluetooth connected: Blue light remains on
3. Recording: Red light remains on
4. Recording Paused: Red light flashes
5. Low Battery: Purple light flashes and then turns off
6. Charging: Purple light remains on and turns off when fully charged

Operating Instructions

● **Power On:** Briefly press the power switch (at the end of the pen clip). The blue light will flash, indicating the recorder is powered on and ready for Bluetooth connection.

● **Power Off:** When the recorder is in idle standby mode (not recording), it automatically shuts off after 5 minutes by default.

Saving Recordings: In standby mode, press and hold the "Power Recording On/Off" button to enter recording mode. The recorder will begin recording and the indicator light will turn solid red. During recording, press and hold the "Power Recording On/Off" button again to stop and save the current recording.

During recording, the indicator light will automatically turn off after 30 seconds. Briefly press the power switch again to view the recorder's real-time status.

● **Open the USB cap**

The USB port is located at the top of the recorder. You can simply pull out the USB cap.

● **Extending and Retracting the Writing Refill**

The writing tip is retractable. At the bottom of the retractable tip, press and hold it and twist it right to extend the writing tip, and press and hold it and twist it left to retract it.

● **System Reset**

If the system freezes or becomes inoperable, press and hold the "Power Recording On/Off" button for 13 seconds to force a system reset.

● **Refill Replacement**

This device supports refill replacement. Grasp the retractable pen tip and twist it left to remove it. Once the refill is removed, you can replace it.

● **Charging**

Before charging, plug the adapter into a power source, then directly connect the recorder's USB port to the Type-C port on the power adapter. If the charger doesn't have a Type-C port, you can also plug the included USB cable (female end) into the device's USB port and the other end into the charger's USB port to charge. A full charge takes about 2 hours. Please use a DC 5V 1000mA power adapter that complies with national standards and is CCC-certified.

Note: The Selected Charger Must Meet the Following Requirements. Otherwise, Any Accidents or Malfunctions Will Be Considered Human Error.

Input: AC 110-240V 50/60Hz Max:150mA

Output: DC 5V 1A

APP OPERATION INSTRUCTIONS

● APP download and installation

This voice recorder can be used standalone or connected to the "VocMas" app via Bluetooth.

APP INSTALLATION: Search for "VocMas" in the App Store or Google Play to download the VocMas App.

Register your VocMas Account-

Bind AI smart voice recorder to the VocMas App via Bluetooth to activate it.



● Bluetooth connection

After the recorder is turned on, it will directly enter the Bluetooth connection state. After logging in to the "VocMas" APP on your mobile phone, click the "+ Not Connected" menu button in the upper left corner of the menu bar in the APP to find the device and connect to Bluetooth. After the recorder successfully connects to the APP for the first time, the APP will pop up a prompt box "(BLE) has been connected", and the recorder will display the Bluetooth connected status.

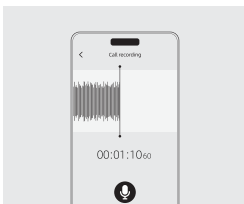


● Voice recording

① **Initiate recording from the pen:** After the voice recorder is connected to the app, press and hold the "Power/Recording Switch" button of the voice recorder for 3 seconds, the voice recorder enters the recording mode, and the app will also enter the recording state synchronously.

② **App initiates recording:** When the recorder is connected to the app, click the "🎤" button in the menu bar at the bottom of the app, the recorder enters the recording mode, and the app enters the recording state at the same time.

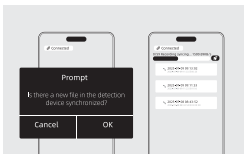
③ **End recording:** Press and hold the "Power/Recording Switch" button of the voice recorder to end and save the recording. You can also directly touch the "Stop" menu button at the bottom of the app to end and save the recording.



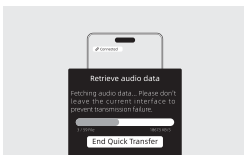
APP OPERATION INSTRUCTIONS

● Synchronous file transfer

① **Bluetooth transmission:** Offline recording files when the recorder and app are not connected can be uploaded to the app when the recorder and app are connected. After the recorder and app are connected, the system will automatically detect the files stored in the recorder that have not been transferred to the app. When the recording files to be transferred are detected, the system will prompt whether the detection device has new files to be synchronized. After clicking OK, it will be automatically uploaded to the app via Bluetooth.



② **WiFi fast transfer:** This device supports WiFi fast transfer function. For offline large recording files, you can select fast transfer mode. After the recording pen is connected to the APP, the system automatically detects the files stored on the recording pen that have not been transferred to the APP. When the recording files to be transferred are detected, the system prompts whether the detection device has new files to be synchronized. After clicking OK, it will be automatically uploaded to the APP via Bluetooth. At this time, you can click the "📶" menu button on the right side of the APP transfer progress bar to connect the local WiFi hotspot to the mobile phone. After the connection is successful, you can enter the WiFi fast transfer mode.



● Recording File Playback and Management

① **Playing Recording Files:** Saved recordings can be played directly on the app. After opening a saved audio file in the app, tap the play button below the file to start playing the current recording.

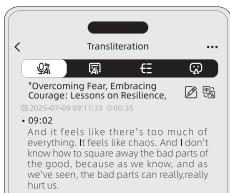
② **Recording File Transcription:** After opening an audio file saved in the app, click the "Transcribe Now" button. The system will transcribe the current recording file into text. After the transcription is complete, you can automatically generate a summary, mind map, etc.

③ **Modification of transcription content:** After the file transcription is completed, click to enter the transcribed file, and then click "✎" in the upper right corner of the APP to enter the file editing mode. You can directly modify the file name and content, and click "✓" to save after modification.

④ **Translation of transcribed content:** After the file is transcribed, the transcribed content can be translated. Click to enter the transcribed file, and then click on "🗣️" in the upper right corner of the APP to enter the translation language selection page. Select the language to be translated and click on transcribed translation.

APP OPERATION INSTRUCTIONS

⑤ **File sharing and export:** After clicking to open the audio file saved on the app, click the "..."/> menu button in the menu bar in the upper right corner of the app, and select "Export" to enter the file sharing and export menu. After selecting the share link, the entire file can be shared and sent through mainstream media such as WeChat, QQ, and email. Select the export menu to select the current audio file, transcription, summary, or mind map to be sent through WeChat, QQ, Bluetooth, etc.



● File deletion

① **Single file deletion:** You can directly delete the recording file on the app side. Find the file you want to delete in the file list state, slide to the left and the operation menu will pop up. There are three menus: delete, edit, and batch selection. Select the "Delete" menu to enter the deletion range option menu. Select Delete only local audio to delete only the current app file. Select Delete local and recorder audio to completely delete the current file (both the recorder and the app are deleted).

② **Batch file deletion:** In the app file list state, slide to the left to pop up the operation menu. Select the "Batch selection" menu. The system will pop up a list of all recording files. You can click Select All or select the files you want to delete one by one and then click Delete to enter the deletion range option menu. Select Delete only local audio to delete only the batch selected app files. Select Delete local and recorder audio to completely delete the currently selected files (both the recorder and the app are deleted)

● Settings

Click "Connected Devices" on the app to enter the settings menu, where you can view the power, memory usage and firmware version of the recorder in real time.

Private settings: The device defaults to the disabled USB mode. If you need to connect the recording device to the computer via a USB cable, you can turn off the disabled USB mode, and then use the randomly distributed magnetic USB data cable to connect the computer. At this time, the computer will read the memory information of the machine and enter the USB mode.

Advanced settings: There are several setting menus for recording original WAV files, idle shutdown time settings, restoring initial settings, and firmware upgrades;

① **Recording original WAV file switch:** After this switch is turned on, the machine will automatically generate original WAV format recording files when recording.

② **Idle shutdown:** You can set the shutdown time of the machine in idle state, which has 5 minutes, 15 minutes, 30 minutes, 1 hour, 5 hours and never shut down options. You can set it as needed.

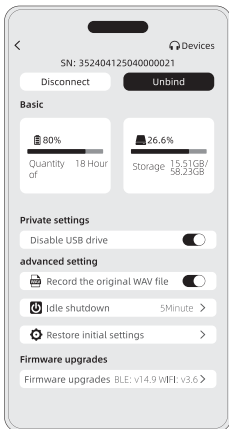
③ **Restore initial settings:** Clicking on the operation to restore initialization settings will restore all data in the device

Delete and restore to factory settings. When recovery is needed, click on restore to delete all data in the device

And restore to factory settings.

④ **Firmware upgrade:** This machine supports OTA online upgrade. When a new firmware is released, click the firmware version to detect whether the firmware of this machine is the latest. If there is a new firmware version, the machine will automatically connect to the WiFi hotspot and perform firmware upgrade and update.

APP OPERATION INSTRUCTIONS



● Unbind

The recorder can only be bound to one mobile phone. If you need to change the mobile phone to re-bind, you need to unbind the device first. Enter the "Connected Devices" app and click the "Unbind" menu. The system will pop up "Do you want to delete the audio in the device after unbinding?" If you choose "Yes", all the recording files in the recorder's memory will be deleted and unbound. If you choose "No", the recording files in the recorder's memory will be retained and unbound. You can choose and unbind as needed.

Accessories

This product includes the following main unit and accessories. If any are missing during purchase, please contact your local dealer.

1. Voice Recorder 1 PCS
2. User Manual and Warranty Card 1 PCS
3. Dedicated USB cable 1 PCS
4. Replacement Refills 4 PCS

Note: The above accessories are subject to change. Please refer to the actual contents of the box!

Technical Specifications

Product Name	AI smart voice recorder
Dimensions	152mm×9.6mm
Microphone (Ambient Recording)	Built-in Silicon Microphone Array
Bluetooth	BLE Bluetooth 5.0
WiFi	2.4G
Mobile System	Android 8.0/ ios 13.0 and above
APK language support	Supports multiple languages, default is Chinese
APK	Supports voice transcription, summarization, mind mapping, AI smart Q&A
USB charging port	Standard Type-C male connector, supports data transmission and export.
Storage Media	Built-in Memory
Battery	3.7V 190mAh polymer battery
Continuous Recording Time	Approximately 19 hours
Charging Time	Approximately 2 hours (using a 5V 1A charger)
Recording Format	WAV/OPUS
Recording Quality	WAV:256kbps OPUS: 32Kbps
Operating Temperature	-5°C → 45°C
Supported computer operating systems	WINDOWS XP/VISTA/WINDOWS 10/Windows 11 and above

FCC Caution.

This device complies with part 15 of the FCC Rules. Operation is subject to the following two conditions:

- (1) This device may not cause harmful interference, and
- (2) this device must accept any interference received, including interference that may cause undesired operation.

Any Changes or modifications not expressly approved by the party responsible for compliance could void the user's authority to operate the equipment.

Note: This equipment has been tested and found to comply with the limits for a Class B digital device, pursuant to part 15 of the FCC Rules. These limits are designed to provide reasonable protection against harmful interference in a residential installation. This equipment generates uses and can radiate radio frequency energy and, if not installed and used in accordance with the instructions, may cause harmful interference to radio communications. However, there is no guarantee that interference will not occur in a particular installation. If this equipment does cause harmful interference to radio or television reception, which can be determined by turning the equipment off and on, the user is encouraged to try to correct the interference by one or more of the following measures:

- Reorient or relocate the receiving antenna.
- Increase the separation between the equipment and receiver.
- Connect the equipment into an outlet on a circuit different from that to which the receiver is connected.
- Consult the dealer or an experienced radio/TV technician for help.

*RF warning for Portable device:

The device has been evaluated to meet general RF exposure requirement. The device can be used in portable exposure condition without restriction.