



ZaryMax

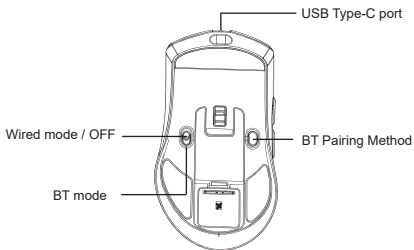
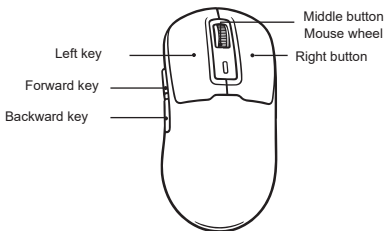
ZaryMax NEO V1-v2

User Manual

GAMING MOUSE

Warm reminder: The images in this manual are schematic diagrams for reference only. Please refer to the physical product for actual details.

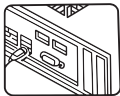
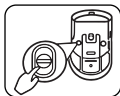
Key description



Connection Method

Wired Connection

When plugged into a computer's USB port, the device will preferentially enter wired USB mouse mode.



Connection Method



((BT))



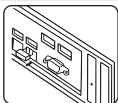
Bluetooth name of the mouse: NEO V1

Wireless Connection (Bluetooth Modes)

Bluetooth Connection

Switching Method: Slide the switch on the bottom of the mouse downward to activate Bluetooth mode. The mouse will enter Bluetooth search mode (blue LED on the bottom flashes). Click the pairing button to switch Bluetooth channels (purple LED flashes).

Pairing Method: Slide the switch on the bottom of the mouse downward to activate Bluetooth mode. Press and hold the pairing button for 3 seconds to enter pairing mode (blue LED flashes quickly). Pairing time: 120 seconds. Reconnection time: 10 seconds. If pairing or reconnection fails, the mouse will enter sleep mode.



DPI Adjustment

Press the DPI switch button to cycle through DPI settings. Factory default DPI setting is 1600.

- Red light: 800 DPI
- Blue light: 1600 DPI
- Pink light: 2400 DPI
- Green light: 4800 DPI
- Yellow light: 6500 DPI
- Cyan light: 16000 DPI
- Factory default: 1600 DPI



DPI Indication: The LED flashes in the corresponding DPI color 3 times and then turns off.

Polling Rate

Bluetooth mode polling rate

125 Hz

Wired mode polling rate

125 Hz / 250 Hz / 500 Hz / 1000 Hz

Sleep Settings

Bluetooth sleep mode: The mouse enters sleep mode after 30 seconds of inactivity. Move the mouse or press any button to wake it up.

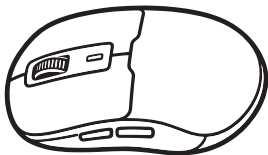
Battery Status Indication

Low battery alert: Red LED flashes.

Charging indication: Red LED stays on while charging; green LED when fully charged.

Fully charged status: Green LED stays on constantly.

Battery voltage below 3.3V: The battery indicator flashes red at a frequency of 0.5 Hz, indicating that charging is required.



FCC Caution:

This device complies with part 15 of the FCC Rules. Operation is subject to the following two conditions: (1) This device may not cause harmful interference, and (2) this device must accept any interference received, including interference that may cause undesired operation.

Any changes or modifications not expressly approved by the party responsible for compliance could void the user's authority to operate the equipment.

NOTE: This equipment has been tested and found to comply with the limits for a Class B digital device, pursuant to Part 15 of the FCC Rules. These limits are designed to provide reasonable protection against harmful interference in a residential installation. This equipment generates, uses and can radiate radio frequency energy and, if not installed and used in accordance with the instructions, may cause harmful interference to radio communications. However, there is no guarantee that interference will not occur in a particular installation.

If this equipment does cause harmful interference to radio or television reception, which can be determined by turning the equipment off and on, the user is encouraged to try to correct the interference by one or more of the following measures:

- Reorient or relocate the receiving antenna.
- Increase the separation between the equipment and receiver.
- Connect the equipment into an outlet on a circuit different from that to which the receiver is connected.
- Consult the dealer or an experienced radio/TV technician for help.

The device has been evaluated to meet general RF exposure requirement. The device can be used in portable exposure condition without restriction.