

# Installation Guide

PoE Injector and PoE Splitter

© 2026 TP-Link 7100002997 REV6.30.2

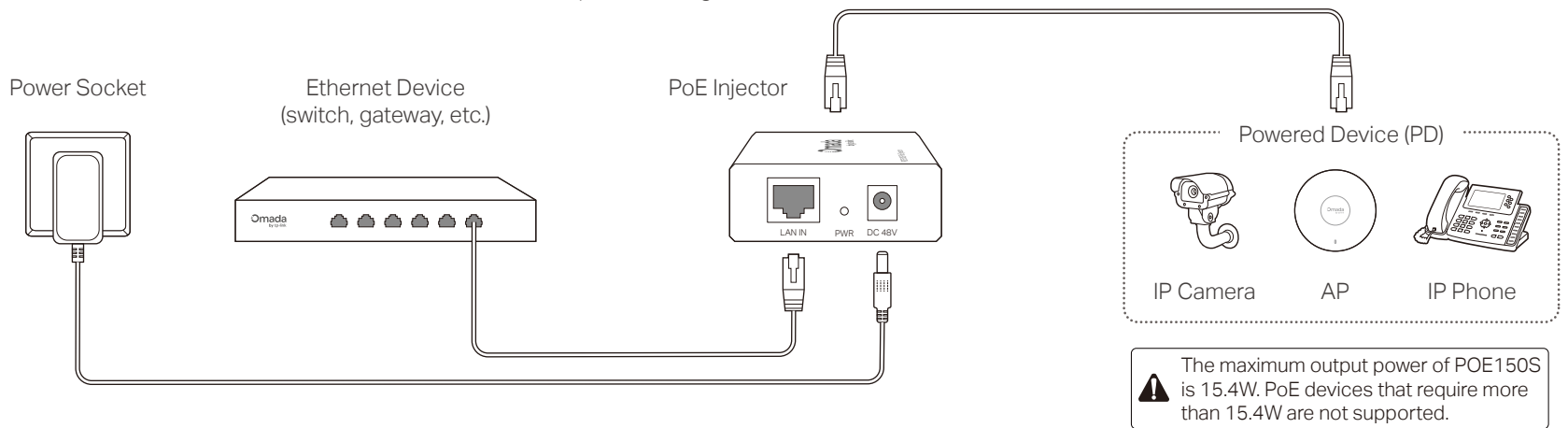
For technical support and other information, please visit <https://support.omadanetworks.com/>, or simply scan the QR code.



Some models featured in this guide may be unavailable in your country or region. For local sales information, visit <https://www.omadanetworks.com>.

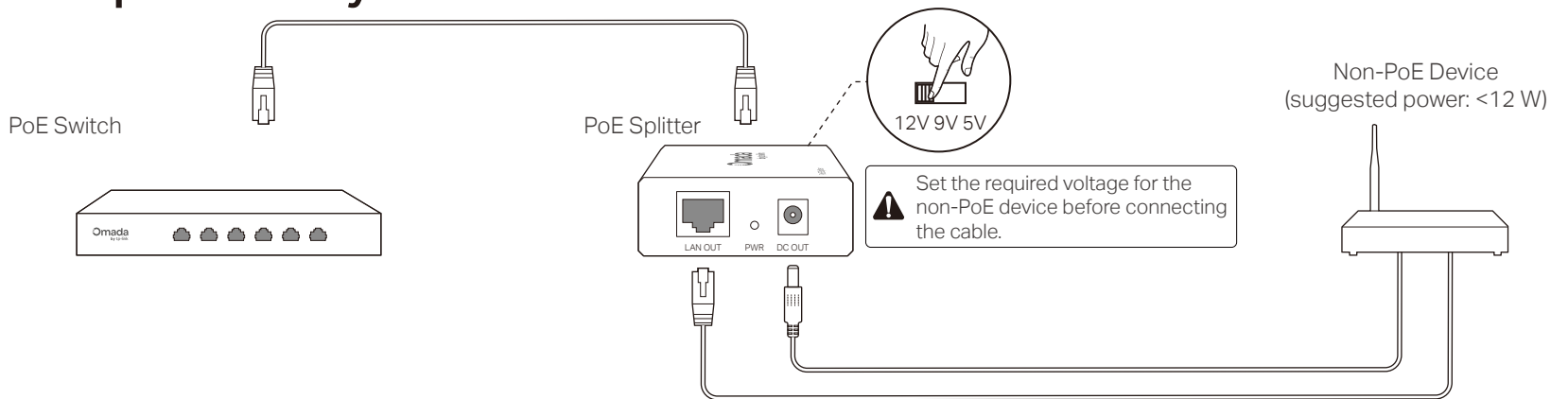
## PoE Injector Only

The PoE injector supplies steady power and data connectivity to a powered device such as a PoE IP camera, PoE AP, and PoE IP phone through an Ethernet cable.



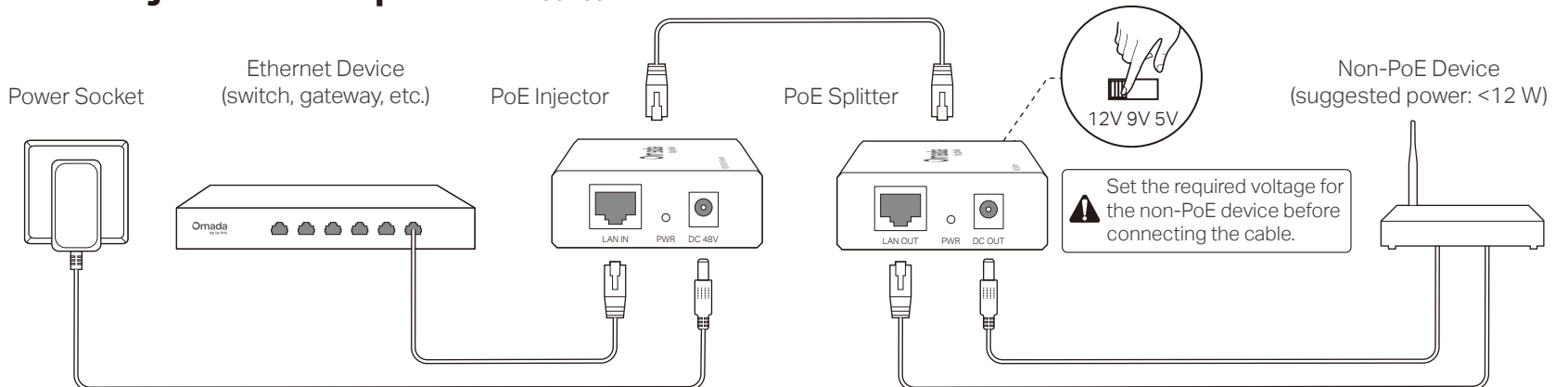
## PoE Splitter Only

The PoE splitter can be used with a PoE switch to deliver direct current (DC) power and data to a Non-PoE device.



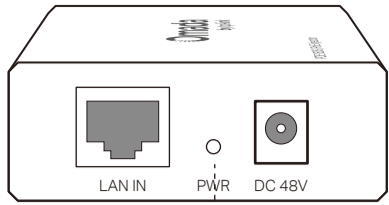
## PoE Injector & Splitter

The PoE injector and PoE splitter can be used as a kit to supply power and transmit data to a Non-PoE device.



# Power LED Explanation

## PoE Injector:



**On:** Supplying power normally  
**Off:** No power supply

## FAQ

### Q1. Can the PoE injector supply power to a PoE device which doesn't have a gigabit PoE port?

**A:** Yes. All RJ45 ports of the PoE injector support 10/100/1000 Mbps auto-negotiation.

### Q2. What can I do if my PoE injector doesn't supply power to the powered device or the supplied power is unstable?

- A1:** Ensure the PD is PoE-compliant and its connecting port supports the PoE function.
- A2:** Ensure the power consumption of the PD doesn't exceed 15.4 W, otherwise the overload protection of the PoE injector will be activated. The quality and length of the Ethernet cable may influence the reception of the power supply.

### Q3. Must I use the PoE injector together with the PoE splitter?

**A:** No. The PoE injector can supply power to all PDs supporting the PoE function. The PoE splitter is used with a PoE switch or the PoE injector to supply power to a non-PoE device.

### Q4. The Power LED of the PoE injector is not lit.

- A1:** Ensure the power cord is connected to the PoE injector with a power source properly.
- A2:** Ensure the power consumption of the PD doesn't exceed 15.4 W; otherwise, the PoE injector will activate the overload protection and the power will be cut off.

## Safety Information

- Keep the device away from water, fire, humidity or hot environments.
- Do not attempt to disassemble, repair, or modify the device. If you need service, please contact us.
- Do not use any other chargers than those recommended.
- Do not use damaged charger or USB cable to charge the device.

Please read and follow the above safety information when operating the device.

We cannot guarantee that no accidents or damage will occur due to improper use of the device. Please use this product with care and operate at your own risk.

For the EU countries, use only the power adapters listed below:

Model	Power Adapter	Manufacturer
POE150S		TP-Link

## FCC FCC compliance information statement

Product Name: PoE Injector  
Model Number: POE150S

Component Name	Model
I.T.E. POWER SUPPLY	T480038-2B1

Product Name: PoE Splitter  
Model Number: POE10R  
Responsible party:  
TP-Link Systems Inc.  
Address: 10 Mauchly, Irvine, CA 92618  
Website: <https://www.tp-link.com/us/>  
Tel: +1 626 333 0234  
Fax: +1 909 527 6804  
E-mail: [sales.usa@tp-link.com](mailto:sales.usa@tp-link.com)

This equipment has been tested and found to comply with the limits for a Class B digital device, pursuant to part 15 of the FCC Rules. These limits are designed to provide reasonable protection against harmful interference in a residential installation. This equipment generates, uses and can radiate radio frequency energy and, if not installed and used in accordance with the instructions, may cause harmful interference to radio communications. However, there is no guarantee that interference will not occur in a particular installation. If this equipment does cause harmful interference to radio or television reception, which can be determined by turning the equipment off and on, the user is encouraged to try to correct the interference by one or more of the following measures:

- Reorient or relocate the receiving antenna.
- Increase the separation between the equipment and receiver.
- Connect the equipment into an outlet on a circuit different from that to which the receiver is connected.
- Consult the dealer or an experienced radio/ TV technician for help.

This device complies with part 15 of the FCC Rules. Operation is subject to the following two conditions:

- This device may not cause harmful interference.
- This device must accept any interference received, including interference that may cause undesired operation.

Any changes or modifications not expressly approved by the party responsible for compliance could void the user's authority to operate the equipment.

We, TP-Link Systems Inc., has determined that the equipment shown as above has been shown to comply with the applicable technical standards, FCC part 15. There is no unauthorized change is made in the equipment and the equipment is properly maintained and operated.

## FCC FCC compliance information statement

Product Name: I.T.E. POWER SUPPLY  
Model Number: T480038-2B1  
Responsible party:  
TP-Link Systems Inc.  
Address: 10 Mauchly, Irvine, CA 92618  
Website: <https://www.tp-link.com/us/>  
Tel: +1 626 333 0234  
Fax: +1 909 527 6804  
E-mail: [sales.usa@tp-link.com](mailto:sales.usa@tp-link.com)

This equipment has been tested and found to comply with the limits for a Class B digital device, pursuant to part 15 of the FCC Rules. These limits are designed to provide reasonable protection against harmful interference in a residential installation. This equipment generates, uses and can radiate radio frequency energy and, if not installed and used in accordance with the instructions, may cause harmful interference to radio communication. However, there is no guarantee that interference will not occur in a particular installation. If this equipment does cause harmful interference to radio or television reception, which can be determined by turning the equipment off and on, the user is encouraged to try to correct the interference by one or more of the following measures:

- Reorient or relocate the receiving antenna.
- Increase the separation between the equipment and receiver.
- Connect the equipment into an outlet on a circuit different from that to which the receiver is connected.
- Consult the dealer or an experienced radio/ TV technician for help.

This device complies with part 15 of the FCC Rules. Operation is subject to the following two conditions:

- This device may not cause harmful interference.
- This device must accept any interference received, including interference that may cause undesired operation.

Any changes or modifications not expressly approved by the party responsible for compliance could void the user's authority to operate the equipment.

We, TP-Link Systems Inc., has determined that the equipment shown as above has been shown to comply with the applicable technical standards, FCC part 15. There is no unauthorized change is made in the equipment and the equipment is properly maintained and operated.

Issue Date: 2025-2-25



Продукт сертифіковано згідно с правилами системи УкрСЕПРО на відповідність вимогам нормативних документів та вимогам, що передбачені чинними законодавчими актами України.



Industry Canada Statement  
CAN ICES-3 (B)/NMB-3(B)

CE CE Mark Warning



## BSMI Notice (For POE150S)

### 安全諮詢及注意事項

- 請使用原裝電源供應器或只能按照本產品注明的電源類型使用本產品。
- 清潔本產品之前請先拔掉電源線。請勿使用液體、噴霧清潔劑或濕布進行清潔。
- 注意防潮，請勿將水或其他液體潑灑到本產品上。
- 插槽與開口供通風使用，以確保本產品的操作可靠並防止過熱，請勿堵塞或覆蓋開口。
- 請勿將本產品置放於靠近熱源的地方，除非有正常的通風，否則不可放在密閉位置中。
- 請不要私自拆開機殼或自行維修，如產品有故障請與原廠或代理商聯繫。

For POE10R:

### 限用物質含有情況標示聲明書

產品元件名稱	限用物質及其化學符號					
	鉛 Pb	鎘 Cd	汞 Hg	六價鉻 Cr <sup>6+</sup>	多溴聯苯 PBB	多溴二苯醚 PBDE
PCB	○	○	○	○	○	○
外殼	○	○	○	○	○	○
塑膠組件	○	○	○	○	○	○
其他及其配件	-	○	○	○	○	○

備考1: "○"系指該項限用物質之百分比含量未超出百分比含量基準值。  
備考2: "-"系指該項限用物質為排除項目。

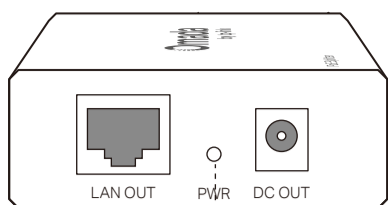
For POE150S:

### 限用物質含有情況標示聲明書

產品元件名稱	限用物質及其化學符號					
	鉛 Pb	鎘 Cd	汞 Hg	六價鉻 Cr <sup>6+</sup>	多溴聯苯 PBB	多溴二苯醚 PBDE
PCB	○	○	○	○	○	○
外殼	○	○	○	○	○	○
電源供應器	-	○	○	○	○	○
其他及其配件	-	○	○	○	○	○

備考1: "○"系指該項限用物質之百分比含量未超出百分比含量基準值。  
備考2: "-"系指該項限用物質為排除項目。

## PoE Splitter:



**On:** Connected to PSE correctly  
**Off:** No PSE is connected

## Specifications

### General Specifications

Standards	IEEE 802.3i, IEEE802.3u, IEEE 802.3ab, IEEE 802.3af
LED	PWR
Cable Type	UTP/STP of Cat. 5 or above (based on the standards that the connected devices comply with)
Ports	POE150S: <ul style="list-style-type: none"><li>10/100/1000 Mbps Auto-Negotiation RJ45 LAN IN Port</li><li>10/100/1000 Mbps Auto-Negotiation RJ45 POWER+DATA OUT Port</li><li>DC 48 V Power Input Port</li></ul> POE10R: <ul style="list-style-type: none"><li>10/100/1000 Mbps Auto-Negotiation RJ45 POWER+DATA IN Port</li><li>10/100/1000 Mbps Auto-Negotiation RJ45 LAN OUT Port</li><li>5V / 9V / 12V DC OUT Power Output Port</li></ul>

### Environmental and Physical Specifications

Operating Temperature (POE150S)	-10°C to 50°C (14°F to 122°F)
Operating Temperature (POE10R)	-5°C to 45°C (23°F to 104°F)
Storage Temperature	-40°C to 70°C (-40°F to 158°F)
Operating Humidity	10% to 90% non-condensing
Storage Humidity	5% to 90% non-condensing

### 環境和物理規格

運作溫度 (POE150S)	-10°C - 50°C (14°F - 122°F)
運作溫度 (POE10R)	-5°C - 45°C (23°F - 104°F)
存放溫度	-40°C - 70°C (-40°F - 158°F)
運作濕度	10% - 90% RH 無凝結
存放濕度	5% - 90% RH 無凝結

## EU Declaration of Conformity

TP-Link hereby declares that the PoE injector and splitter are in compliance with the essential requirements and other relevant provisions of directives 2014/30/EU, 2014/35/EU, 2009/125/EC, 2011/65/EU and (EU)2015/863.

The original EU declaration of conformity may be found at <https://www.tp-link.com/en/ce>.

## UK Declaration of Conformity

TP-Link hereby declares that the PoE injector and splitter are in compliance with the essential requirements and other relevant provisions of the Electromagnetic Compatibility Regulations 2016 and Electrical Equipment (Safety) Regulations 2016.

The original UK Declaration of Conformity may be found at <https://www.tp-link.com/support/ukca>

Продукт сертифіковано згідно с правилами системи УкрСЕПРО на відповідність вимогам нормативних документів та вимогам, що передбачені чинними законодавчими актами України.

## Explanation of the symbols on the product label

### 產品標籤上符號的解釋

Note: The product label can be found at the bottom of the product.  
Symbols may vary from products.

注意：產品標籤可在產品底部找到。符號可能因產品而異。

Symbol 符號	Explanation 說明
	Class II equipment 二級設備
	Class II equipment with functional earthing 具有接地功能的二級設備
	Alternating current 交流電
	Direct current DC 電壓
	Polarity of d.c. power connector 輸出端點的極性
	For indoor use only 僅供室內使用
	Dangerous voltage 危險電壓
	Caution, risk of electric shock 請注意，有觸電的危險
	Energy efficiency Marking 能源效率標誌
	Protective earth 保護接地
	Earth 接地
	Frame or chassis 框架或外殼
	Functional earthing 功能接地
	Caution, hot surface 請注意，表面過熱
	Caution 警告
	Operator's manual 操作手冊
	Stand-by 待機
	"ON"/"OFF" (push-push) “開啟” / “關閉” (按壓式)
	Fuse 保險絲
	Fuse is used in neutral N 保險絲用於中性線 N

### RECYCLING

#### 回收

This product bears the selective sorting symbol for Waste electrical and electronic equipment (WEEE). This means that this product must be handled pursuant to European directive 2012/19/EU in order to be recycled or dismantled to minimize its impact on the environment.

User has the choice to give his product to a competent recycling organization or to the retailer when he buys a new electrical or electronic equipment.

這個產品帶有歐盟指令 2012/19/EU 中關於廢棄電氣電子設備 (WEEE) 的選擇性分類標誌。這意味著，該產品必須按照該指令處理，以便進行回收或拆解，從而最大限度地減少對環境的影響。

用戶可以選擇將產品交給有資格的回收機構，或在購買新的電器或電子設備時將其交給零售商進行回收。

	Caution, avoid listening at high volume levels for long periods 請小心，避免長時間以高音量收聽。
	Disconnection, all power plugs 斷線，所有電源插頭
<b>m</b>	Switch of mini-gap construction 迷你間隙結構開關
<b>μ</b>	Switch of micro-gap construction (for US version) Switch of micro-gap / micro-disconnection construction (for other versions except US) 小間隙結構開關 (US 版本) 小間隙 / 小斷開結構的開關 (非 US 版)
<b>ε</b>	Switch without contact gap (Semiconductor switching device) 無接觸間隙的開關 (半導體開關設備)