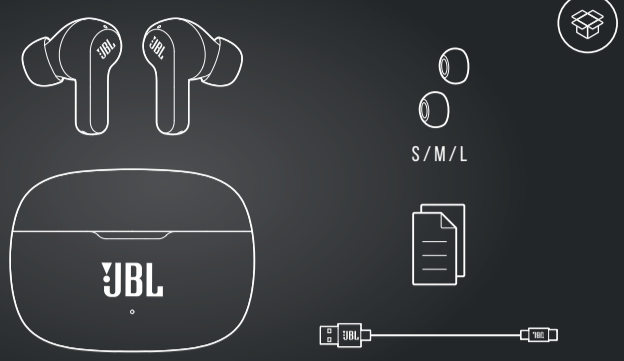


QUICK START GUIDE

VIBE200 TWS

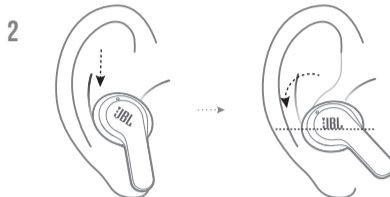
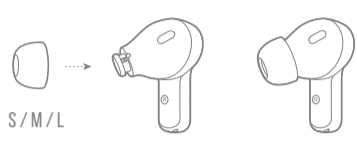


WHAT'S IN THE BOX

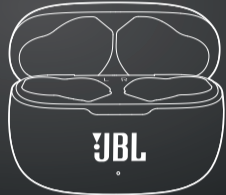
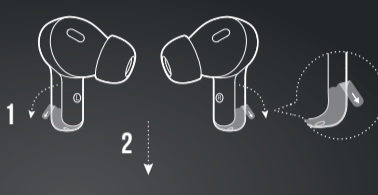


HOW TO WEAR

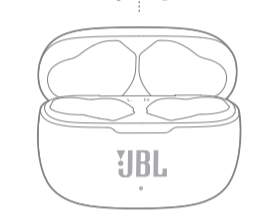
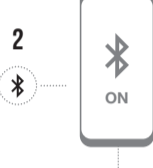
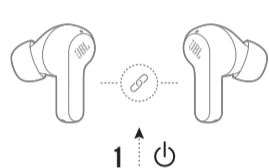
1 TRY DIFFERENT SIZES OF EARTIPS FOR BEST FIT AND SEAL.



FIRST TIME USE

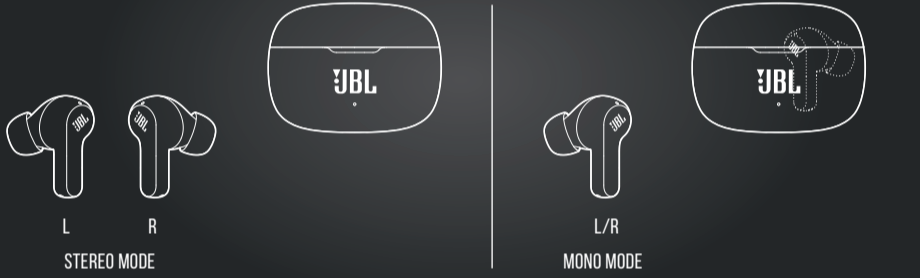


POWER ON & CONNECT



CHOOSE "JBL VIBE200TWS" TO CONNECT

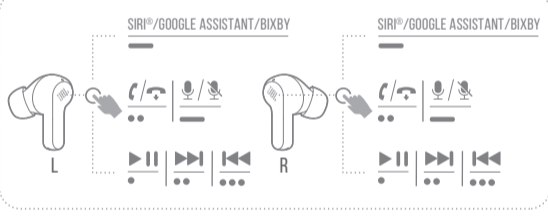
DUAL CONNECT



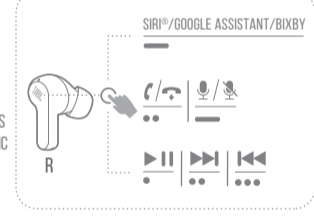
BUTTON COMMAND

- TAP × 1
- TAP × 2
- TAP × 3
- HOLD (2s)

1. STEREO MODE

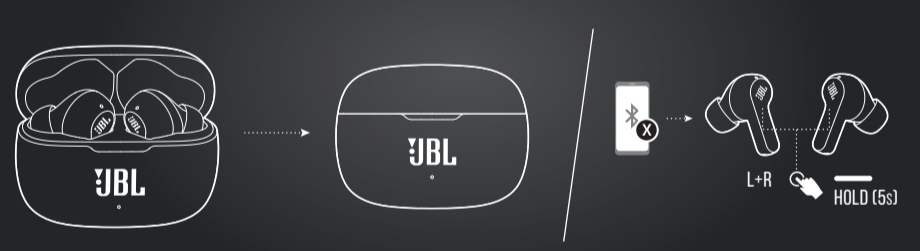


2. MONO MODE



SEAMLESS AUTOMATIC SWITCH

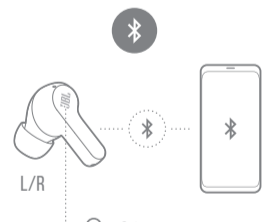
POWER OFF



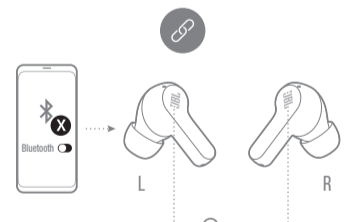
MANUAL CONTROLS

- TAP × 1
- TAP × 2
- TAP × 3
- HOLD (5s)

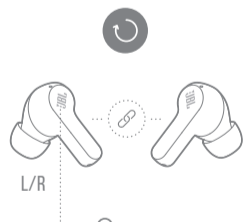
CONNECT TO A NEW BLUETOOTH DEVICE



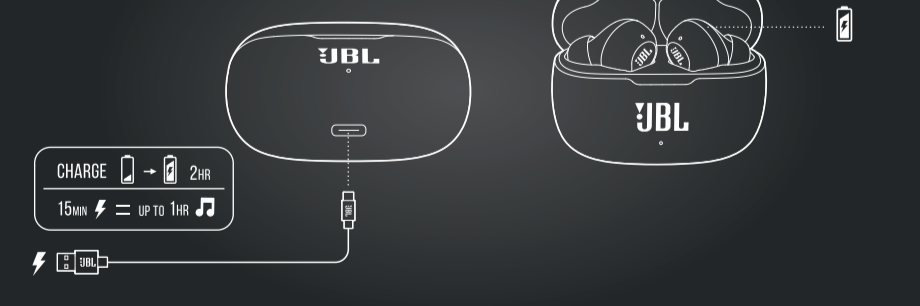
RECONNECT LEFT & RIGHT



FACTORY RESET

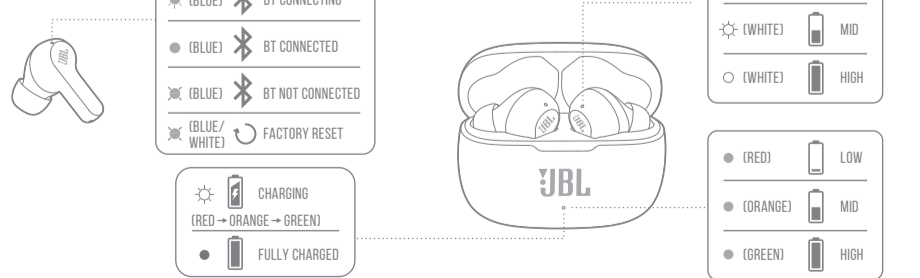


CHARGING



CHARGE 15MIN → 2HR
15MIN ⚡ = UP TO 1HR 🎵

LED BEHAVIORS



- (BLUE) ✎ BT CONNECTING
- (BLUE) ✎ BT CONNECTED
- (BLUE) ✎ BT NOT CONNECTED
- (BLUE/WHITE) ↻ FACTORY RESET

- (RED → ORANGE → GREEN) 🔋 CHARGING
- 🔋 FULLY CHARGED

- (OFF) 🔋 LOW
- (WHITE) 🔋 MID
- (WHITE) 🔋 HIGH

- (RED) 🔋 LOW
- (ORANGE) 🔋 MID
- (GREEN) 🔋 HIGH

TECH SPEC

Model: VIBE200TWS
Driver size: 8 mm / 0.315" Dynamic Driver
Power supply: 5V = 1A
Weight: 47.5 g / 0.105 lbs
Headset battery type: Lithium-ion Battery (48 mAh / 3.7V)
Charging case battery type: Lithium-ion Battery (500 mAh / 3.7V)
Charging time: 2 hrs from empty
Music playtime with BT on: up to 5 hrs
Frequency response: 20 Hz – 20 kHz
Impedance: 16 ohm
Sensitivity: 108 dB SPL@1 kHz
Maximum SPL: 93 dB
Microphone sensitivity: -38 dBV/Pa @ 1 kHz
Bluetooth version: 5.0
Bluetooth profile version: A2DP V1.3, AVRCP V1.6, HFP V1.7
Bluetooth transmitter frequency range: 2.400 GHz - 2.4835 GHz
Bluetooth transmitter power: 12 dBm
Bluetooth transmitter modulation: GFSK, m/4 QPSK, 8DPSK
Maximum operation temperature: 45°C



