



QUICK START GUIDE

FIELDSENTINEL™ 825/1825

with



⚠️ WARNING

Read all the safety information contained in included Safety Information Insert before using the product.

To avoid serious risk or injury to your dog, it is important you complete the following steps in order before you begin using this system.

WELCOME

Thank you for choosing the SportDOG® Brand FieldSentinel™ Remote Training System. With proper use, this system will help you train your dog efficiently and safely.

The Quick Start Guide will get you and your dog started with this remote training system. For the best experience, review this guide thoroughly.

For more detailed information, we recommend visiting our online support page which provides guidance for pairing your Collar and Handheld, changing the Handheld's button programming, information on the Collar stim ranges, battery replacement, etc. You can easily access it by scanning the QR code provided.



To get the most protection out of your warranty and to be notified for critical updates, please register your product within 30 days at www.sportdog.com. By registering and keeping your receipt you will enjoy the product's full warranty and, should you ever need to call the Customer Care Center, we will be able to help you faster. Most importantly, your valuable information will never be given or sold to anyone. Complete warranty information is available online at www.sportdog.com.

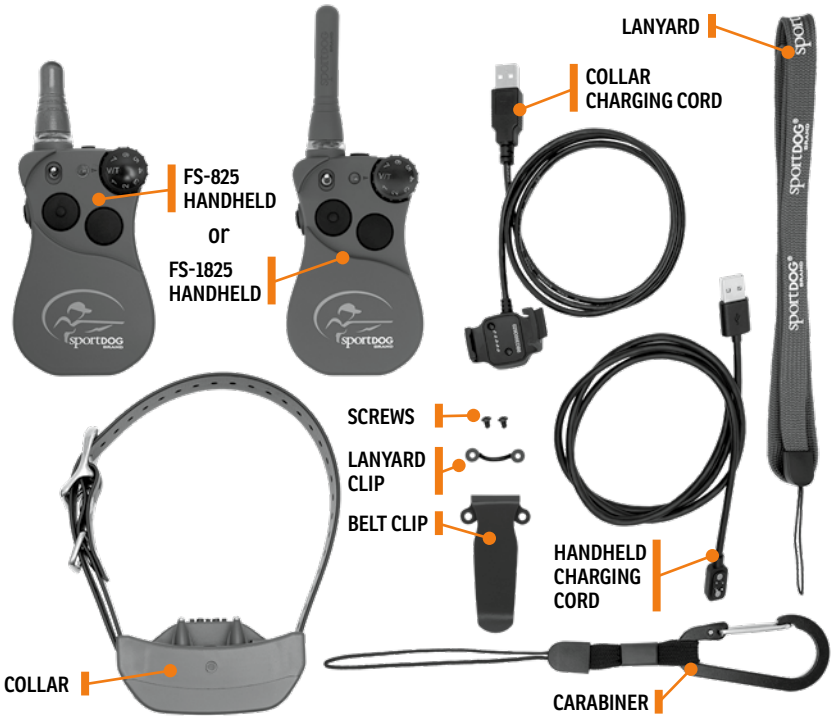
OTHER IMPORTANT INFORMATION

Use of this product implies acceptance of any and all terms, conditions, and notices related to this product including, but not limited to, those found in this Quick Start Guide and the Insert containing important Regulatory Compliance and Safety information.

When storing the device for an extended time, store within the temperature range of 32°F to 77°F (from 0° to 25°C).

Do not leave the device exposed to a heat source or in a high-temperature location, such as in the sun in an unattended vehicle. To prevent damage, remove the device from the vehicle or store it out of direct sunlight, such as in the glove box.

WHAT'S IN THE BOX?



HOW IT WORKS

In addition to being a fully functional training e-collar, this system also monitors your dog's health.

The Collar's built-in health sensors will detect your dog's vitals and the Handheld will alert you when there has been a serious change.

HEALTH SENSORS



This will allow you to know how your dog is doing, even if he is not within eyesight, and quickly address any potentially dangerous health situations.

GET TO KNOW THE HANDHELD & COLLAR

HEALTH ALERT LED

Begins flashing when your dog's composite health score reaches its threshold (for more info see page 9).

SIDE BUTTON*

Tone

UPPER BUTTON*

Continuous Stim equal to level on Dial (1 is low)
Vibe if dial is set to V/T

LOWER BUTTON*

Momentary (nick) Stim equal to level on Dial (1 is low)
Vibe if dial is set to V/T

POWER BUTTON

Powers the Handheld ON or OFF and silences alerts.

TOGGLE SWITCH

Allows for quickly switching between Dog 1 and Dog 2.

INTENSITY DIAL

Adjusts the intensity level of static stimulation or sets the collar function to Vibe or Tone.

INDICATOR LIGHT

Indicates battery status (slow blink) or lights accordingly when button pressed.



**You are able to change the button programming to best fit your training needs. Detailed information and instruction provided on our support site.*

PROBES/CONTACT POINTS

Administers the stimulation to your dog. These are not interchangeable.

HEALTH SENSORS

Monitor your dog's health by detecting vitals during use.

INDICATOR LIGHT

Indicates battery status or lights when a button is pressed on the Handheld.

POWER BUTTON

Powers the Collar ON or OFF.



STEP 1: CHARGE THE HANDHELD & COLLAR

1. Lift the charge cover and connect the magnetic charger to the back of the Handheld by aligning the two and letting it snap into place. The Handheld takes 3 hours to fully charge.

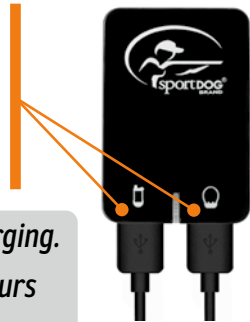


Close the charge cover between charges.

2. Snap the charging clip on the Collar by aligning the brass contacts on the clip to the connection points on the Collar and matching up the SportDOG® logos. The Collar takes 4 hours to charge.



3. Connect each of the USB ends on the charging cables to the wall adapter and plug into a standard wall outlet. The Collar and Handheld Indicator Lights will be solid green while charging and flash green when fully charged.



Only use the included UL certified adapter for charging.

Approximate battery life between charges is 24 hours for both the Collar and Handheld, depending on frequency of use. Power off the Collar and Handheld between uses to maximize battery life.

HANDHELD: To power the Handheld ON or OFF, press and hold the power button until it beeps.

COLLAR: To power the Collar ON, press and release the power button. The Collar will beep and the Indicator Light will flash blue, indicating it's attempting to connect to the SportDOG® App (STEP 2). It will then flash green or red depending on the battery status. After several seconds, the health sensor lights will glow steady green.

To power OFF, press and hold the button until the Collar beeps and light is red.

STEP 2: CHECK FOR UPDATES

Once your system is fully charged, follow the steps below to pair it with a smartphone to ensure your system has the most up-to-date software.

1. Download the SportDOG® Brand App via the QR code.

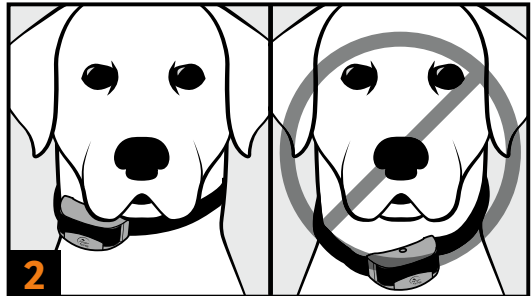
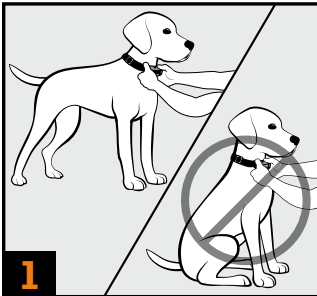


2. Follow the in-app instructions to connect your Handheld and Collar, and ensure your software is up-to-date.

Once you've paired your system with the app we can notify you of any future updates. Although it's not necessary to connect to the app to use your FieldSentinel, it is highly recommended.

STEP 3: FIT THE COLLAR ON YOUR DOG

PROPER FIT AND PLACEMENT OF THE COLLAR IS IMPERATIVE FOR EFFECTIVE TRAINING AND USE. THE HEALTH SENSORS AND CONTACT POINTS MUST HAVE DIRECT CONTACT WITH YOUR DOG'S SKIN.



1. Your dog should be standing comfortably while fitting the collar.
2. Position the collar as high as possible on your dog's neck and slightly to either side, not directly centered. Buckle the collar so that it fits snugly.



3. You should only be able to fit one finger between the strap and your dog's neck. This will help ensure the health sensor and the contact points are both touching your dog's skin. If your dog has a long or thick coat, trim the hair around the contact points to ensure contact with the skin.
4. Check the fit again after your dog becomes more comfortable wearing it and adjust as necessary.

NOTE: If using an additional Collar (such as GPS), it should be located further down your dog's neck from this training collar.

STEP 4: ALLOW THE COLLAR TO CALIBRATE



Power on your Handheld and Collar. Once the Collar is fitted on your dog, it needs up to **5 MINUTES** to calibrate to your dog and start tracking vitals allowing your hunt/training session to start with a valid heart rate. Do not remove the collar or turn it off during this time.

The Handheld alert light will blink yellow during this time frame and will beep when ready.

Every time you put the collar on your dog, it is important to make sure you wait 5 minutes for the collar to calibrate before use. Also, keep the health monitor sensors clean by using soap, warm water, and a microfiber cloth.

Do not leave the collar on your dog longer than 12 hours.

STEP 5: FIND YOUR DOG'S RECOGNITION LEVEL

For effective training, it is important to find the best level of static stimulation for your dog.

RECOGNITION LEVEL: The lowest level of static stimulation at which your dog acknowledges feeling the stimulation through a reaction. This reaction can be flicking his ears, looking around in curiosity, or standing up from a sitting or lying position.

STEP 5: FINDING YOUR DOG'S RECOGNITION LEVEL (CONT.)

IMPORTANT: Your dog should not vocalize or panic when receiving static stimulation.

Always start at the lowest level and slowly increase as needed. Every dog is different, and their recognition level is not correlated to size or breed. Therefore, it is important to watch closely for any slight changes in behavior that demonstrates your dog is feeling the static stimulation.

1. Starting with the Collar powered on and properly fitted on your dog, set the Handheld dial to Level 1. Power your Handheld on by pressing the button as shown.



2. While watching your dog, press the Upper Button for 1 to 2 seconds. Look for any indication that your dog feels the static stimulation.



3. If your dog shows no reaction, increase the Intensity Dial to Level 2 and repeat this process until you find your dog's Recognition Level. This is the level you should use when you begin a training exercise.



4. If you have progressed to the highest level on the dial (7) while searching for your dog's Recognition Level and your dog continues to show no response, check to make sure the fit of the Collar is snug against your dog's neck. Then go back to Level 1 and repeat the process. If your dog still does not indicate he is feeling the static stimulation, you may need to trim the hair beneath the Contact Points or scan the QR code for detailed instructions on how to change the stim range setting on your collar.



HEALTH SENSOR ALERTS

If the Collar detects a significant, potentially dangerous change in your dog's vitals, your Handheld will alert you by flashing a red light at the base of the antenna as well as emitting a tone and vibration. Your Collar Indicator Light will quickly flash red.



We recommend if your Handheld alerts you, go to your dog to assist him (e.g. put eyes on your dog and observe them, take a break, give your dog water).

NOTE: Alerts are transmitted to the Handheld via radio frequency.

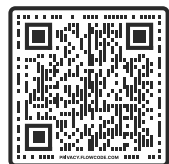
If your dog is beyond signal range from the Handheld or within field conditions where signal is reduced or disrupted, alerts may not be properly transmitted.



To silence the alert, quickly press and release the power button on the Handheld. The tone and vibration will stop, but the Alert LED will continue to flash until your dog's vitals return to normal. If you accidentally turn off the Handheld, simply turn back on. You will not need to wait the 5-minute initializing period. When your dog returns to a normal state, the alert will automatically turn off.



To access more information about heat-related illnesses, refer to the adjacent QR code for tips on what to do if you notice your dog exhibiting certain signs.



CHANGING THE ALERT THRESHOLD

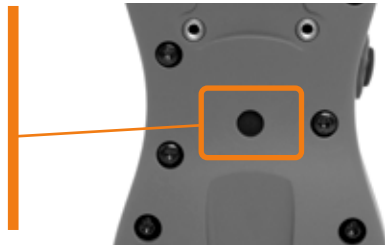
If you find the Handheld is alerting you frequently when your dog's condition is at a normal state, you can adjust the sensitivity of the alert either in the SportDOG® App, or by following the steps below:

IMPORTANT: Only adjust the threshold one level at a time, then testing that level several times with your dog before making any further adjustments. This will help avoid missing important health notifications while your dog is in the field.

1. Begin with the toggle switch down and the intensity dial set to V/T



2. If your belt clip is attached, it will need to be removed. Press the mode button on the back of the Handheld with the tip of a pen. The Indicator Light will be solid green for 15 seconds.



3. Turn the Intensity Dial to your desired threshold (1-4). The Handheld is factory set to threshold Level 1.



4. Press the left side button on your Handheld to set the new level. The Indicator Light will flash 5 times to confirm selection.



SKU numbers: FS-825, FS-1825, FS-AD

Collar - FCC ID: KE3-3003444

IC: 2721A-3003444

Handheld - FCC ID: KE3-30034451

IC: 2721A-30034451

Contains: FCC ID: QOQ-GM240S, IC: 5123A-GM240S

This equipment complies with FCC and RSS-102 radiation exposure limits set forth for an uncontrolled environment and meets the FCC and RSS-102 radio frequency (RF) Exposure Guidelines. This equipment should be installed and operated keeping the radiator at least 20 cm or more away from person's body.

Cet équipement est conforme aux limites d'exposition aux rayonnements de la FCC et RSS-102 établies pour un environnement non contrôlé et respecte les directives d'exposition aux radiofréquences (RF) de la FCC et RSS-102. Lors de l'installation ou de l'utilisation de cet équipement, tenez-vous à plus de 20 cm de distance du radiateur.

FCC

This device complies with part 15 of the FCC Rules. Operation is subject to the following two conditions: (1) This device may not cause harmful interference, and (2) this device must accept any interference received, including interference that may cause undesired operation.

NOTE: This equipment has been tested and found to comply with the limits for a Class B digital device, pursuant to part 15 of the FCC Rules. These limits are designed to provide reasonable protection against harmful interference in a residential installation. This equipment generates, uses, and can radiate radio frequency energy and, if not installed and used in accordance with the instructions, may cause harmful interference to radio communications. However, there is no guarantee that interference will not occur in a specific installation. If interference does occur to radio or television reception, which can be determined by turning the equipment off and on, the user is encouraged to try to correct the interference by one or more of the following measures:

- Reorient or relocate the receiving antenna.
- Increase the separation between the equipment and the receiver.
- Connect the equipment to an outlet on a circuit different from that to which the receiver is connected.
- Consult customer care, the dealer, or an experienced radio/TV technician for help.

CAUTION: Modification or changes to this equipment not expressly approved by Radio Systems Corporation may void the user's authority to operate the equipment.

IC

This device complies with Industry Canada licence-exempt RSS standard(s). Operation is subject to the following two conditions: (1) this device may not cause interference, and (2) this device must accept any interference, including interference that may cause the undesired operation thereof.

Le présent appareil est conforme aux CNR d'Industrie Canada applicables aux appareils radio exempts de licence. L'exploitation est autorisée aux deux conditions suivantes : (1) l'appareil ne doit pas produire de brouillage, et (2) l'utilisateur de l'appareil doit accepter tout brouillage radioélectrique subi, même si le brouillage est susceptible d'en compromettre le fonctionnement.

Android, Google Play and the Google Play logo are trademarks of Google Inc.

Apple, the Apple logo, iPhone, iPad, and iPod touch are trademarks of Apple Inc., registered in the U.S. and other countries. App Store is a service mark of Apple Inc.



SUPPORT.SPORTDOG.COM

©2023 RADIO SYSTEMS CORPORATION
Radio Systems Corporation • 10427 PetSafe Way • Knoxville, TN 37932
YU400-2555/1