

深圳市中龙通电子科技有限公司 CHINA DRAGON TECHNOLOGY LIMITED		Material Category	
Material Model	R601T3R03	Version	1.0
		Page	1 / 17

Technical Specification

Material Category: General RF Module

Hisense Part No.: R601T3R03

Supplier Model: CDO.SYR60A0-08(HX)

Material Code: 1421353

深圳市中龙通电子科技有限公司 CHINA DRAGON TECHNOLOGY LIMITED		Material Category	
Material Model	R601T3R03	Version	1.0
		Page	2 / 17

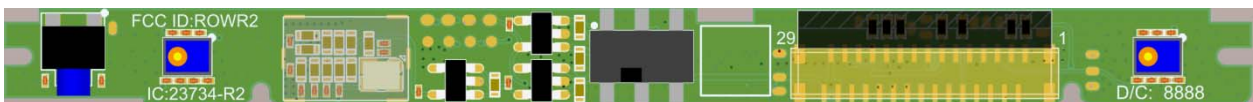
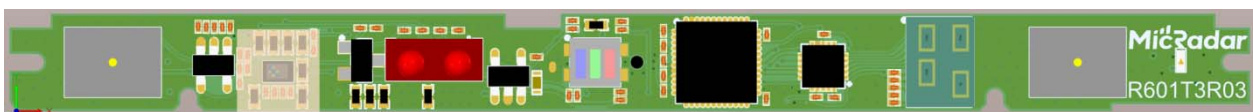
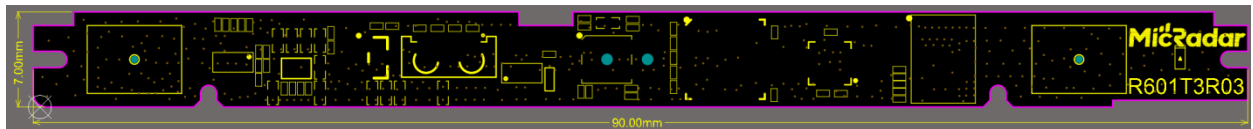
revision History

Version No.	Revision Content	Reviser	Revision Date
1.0	New Version Compilation		

深圳市中龙通电子科技有限公司 CHINA DRAGON TECHNOLOGY LIMITED		Material Category	
Material Model	R601T3R03	Version	1.0
		Page	3 / 17

1. Appearance, Design Drawings and Process Requirements

1.1. Appearance and Dimensions



Remarks:

- (1) The dimensional tolerance above is $\pm 0.2\text{mm}$.
- (2) The device appearance shall be smooth, clean, free of oil stains, scratches and cracks; the device pins shall be free of deformation and the surface shall be free of oxidation; the front of the device shall be marked with clear and durable logos or information.
- (3) Model Marking: Composed of letters and numbers, the model marking shall be easy to identify and distinguish; in case of any change, the manufacturer is obliged to provide a reasonable explanation and notify officially in a timely manner.
- (4) Structural dimensions shall be described by structural drawings with clear external dimensions. For the transition content of length *width* height and overall dimensions (or other obvious differences), the typical values and tolerances (or maximum and minimum values)

深圳市中龙通电子科技有限公司 CHINA DRAGON TECHNOLOGY LIMITED		Material Category	
Material Model	R601T3R03	Version	1.0
		Page	4 /17

shall be marked. Enlarged drawings shall be provided for key parts that cannot be reflected in the drawings.

1.2. Key Structure, Material and Process

1.2.1. Board Material and PCB

- Board Material: FR-4
- Surface Finishing: Immersion Gold
- Lamination: 4-layer through hole + blind hole
- Comparative Tracking Index: 250V

PCB design and manufacturing process shall avoid CAF (Conductive Anodic Filament) failure. For example, "PCB must use CAF-resistant board material, and the via pitch shall be $\geq 0.4\text{mm}$ ".

Note: CAF (Conductive Anodic Filament) refers to the migration of conductive cations, which is specifically manifested as the reduction of PCB insulation performance caused by copper ion migration between conductors, leading to circuit short-circuit failure in severe cases.

1.2.2. Connector Specification

The connector is intended to be F05078-30P-T SMD vertical type.

深圳市中龙通电子科技有限公司 CHINA DRAGON TECHNOLOGY LIMITED		Material Category	
Material Model	R601T3R03	Version	1.0
		Page	5/17

2. Material List

Serial No.	Material Name	Specification	Unit	Consumption	Supplier
1	Capacitor	0201, 10nf, ±20%, 16V	pc	1.00	EYANG/VIIYONG/FENGHUA/Samsung/CCTC
2	Capacitor	0201, 470nf, ±20%, 10V	pc	1.00	EYANG/VIIYONG/FENGHUA/Samsung/CCTC
3	Capacitor	0201, 100nf, ±20%, 16V	pc	14.00	EYANG/VIIYONG/FENGHUA/Samsung/CCTC
4	Capacitor	0201, 1uf, ±20%, ≥6.3V	pc	14.00	EYANG/VIIYONG/FENGHUA/Samsung/CCTC
5	Capacitor	0402, 10uf, ±20%, ≥6.3V	pc	9.00	EYANG/VIIYONG/FENGHUA/Samsung/CCTC
6	Capacitor	0201, 1nf, ±20%, 16V	pc	1.00	EYANG/VIIYONG/FENGHUA/Samsung/CCTC
7	Capacitor	0201, 100pf, ±20%, 10V	pc	1.00	EYANG/VIIYONG/FENGHUA/Samsung/CCTC
8	Capacitor	0201, 4.7uf, ±20%, ≥6.3V	pc	5.00	EYANG/VIIYONG/FENGHUA/Samsung/CCTC

深圳市中龙通电子科技有限公司 CHINA DRAGON TECHNOLOGY LIMITED					Material Category
Material Model	R601T3R03				Version
					Page
					1.0
					6 / 17
9	Resistor	0402, 0 ohm, ±5%, 1/16W	pc	1.00	FENGHUA/FOSAN/uni-ohm
10	Resistor	0201, 10K ohm, ±5%, 1/16W	pc	6.00	FENGHUA/FOSAN/uni-ohm
11	Resistor	0201, 4.7K ohm, ±5%, 1/16W	pc	1.00	FENGHUA/FOSAN/uni-ohm
12	Resistor	0201, 150 ohm, ±5%, 1/16W	pc	1.00	FENGHUA/FOSAN/uni-ohm
13	Resistor	0201, 1K ohm, ±5%, 1/16W	pc	4.00	FENGHUA/FOSAN/uni-ohm
14	Resistor	0201, 0 ohm, ±5%, 1/16W	pc	4.00	FENGHUA/FOSAN/uni-ohm
15	Resistor	0201, 100 ohm, ±5%, 1/16W	pc	3.00	FENGHUA/FOSAN/uni-ohm
16	Resistor	0201, 2.2K ohm, ±5%, 1/16W	pc	2.00	FENGHUA/FOSAN/uni-ohm
17	Resistor	0201, 100K ohm, ±5%, 1/16W	pc	1.00	FENGHUA/FOSAN/uni-ohm
18	Resistor	0201, 499 ohm, ±5%, 1/16W	pc	1.00	FENGHUA/FOSAN/uni-ohm
19	Resistor	0201, 51 ohm, ±5%, 1/16W	pc	2.00	FENGHUA/FOSAN/uni-ohm
20	Bead	0402, 600 ohm, 100Mhz, ±25%, 200mA, TDK, MMZ1005B601CT000	pc	5.00	TDK
21	Bead	0402, 120 ohm, 100Mhz, ±25%, 500mA, TDK, MMZ1005S121CT000	pc	1.00	TDK
22	NMOS	2N7002K \ SOT23	pc	1.00	CJ
23	LED	Model: 16-213/T3D-KP1Q2QY/3T Supplier: EVERLIGHT Characteristic: White	pc	1.00	EVERLIGHT
24	Tact Switch	KAN4567-0501C0101-A	pc	1.00	KangJia
25	Toggle Switch	MSS22C07-TG2-MB1	pc	1.00	KangJia
26	Infrared	SDR6438-TT	pc	1.00	HEG (Haige Technology)

深圳市中龙通电子科技有限公司 CHINA DRAGON TECHNOLOGY LIMITED		Material Category	
Material Model	R601T3R03	Version	1.0
		Page	7 / 17

27	MIC	MIC-MSM371DDB024	pc	2.00	MX Microsystems
28	Ambient Light Sensor	STK2736	pc	1.00	sensortek
29	RGB Light	RGB-LT3735RGBCT-IC4-S21	pc	1.00	PARA Light
30	AND Gate	SN74AHC1G08DBVR	pc	1.00	TI
31	FPC	F05078-30P-T SMD vertical type	pc	1.00	ChangTong
32	TVS Diode	PESDNC2FD5VB-ES	pc	2.00	Corelead
33	TVS Diode	PESDNC2FD3V3B	pc	17.00	Corelead
34	Power LDO	SOT23-5, RS3236-3.3YF5	pc	3.00	SongYuan
35	Power LDO	SOT23-5, RS3236-1.8YF5	pc	1.00	SongYuan
36	Crystal Oscillator	2016, 80Mhz, Active, 1.8V, ±3ppm, YXC, YSO690PR	pc	1.00	SongYuan
37	Integrated Circuit	QFN3*3-20L, RUNSIC, RS0208	pc	1.00	SongYuan
38	Integrated Circuit	QFN48, Artery, AT32F403ACGU7 (Small)	pc	1.00	SongYuan
39	Integrated Circuit	BGA, IFX, BGT60TR13C	pc	1.00	SongYuan
40	Printed Circuit Board	Black Solder Mask with White Silkscreen	pc	1.00	SongYuan
41	Seal	MIC Sealing Adhesive Sticker	pc	2.00	Liuchun Intelligence

3. Technical Specifications, Performance Parameters and Test Methods

深圳市中龙通电子科技有限公司 CHINA DRAGON TECHNOLOGY LIMITED		Material Category	
Material Model	R601T3R03	Version	1.0
		Page	8/17

3.1. Basic Characteristics

A. Radar Electrical Performance Parameters

- 1) Operating Frequency Band: 58.0-61.0GHz
- 2) Radar Bandwidth: 2878.54MHz
- 3) Transmit Power: $\leq 11.97\text{dBm}$
- 4) Detection Range: $\leq \pm 50^\circ$
- 5) Radar Transmit Channel: 1
- 6) Radar Receive Channel: 3

B. Functional Requirements

- a) Moving human detection
- b) Stationary human detection

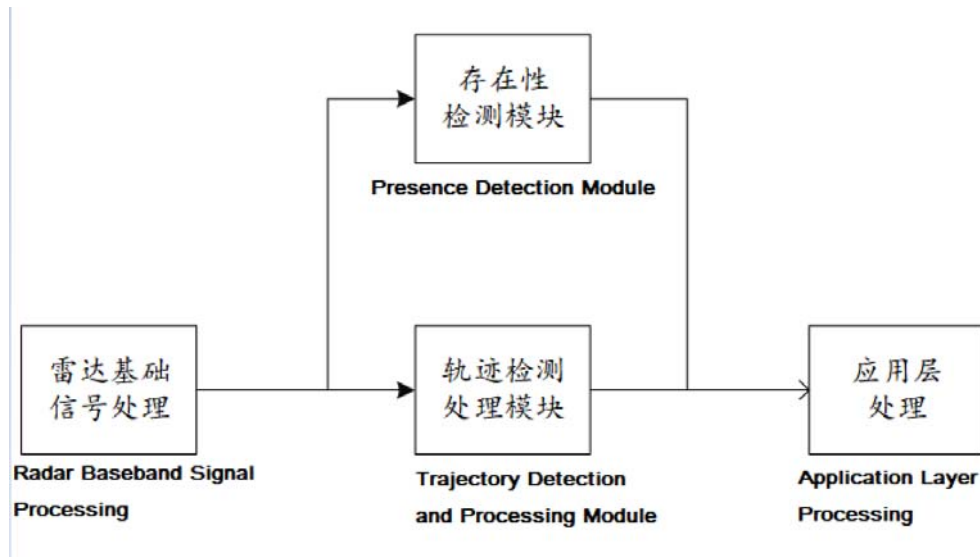
C. Performance Parameter Requirements

Serial No.	Functional Content	Functional Index
1	Detection Range	Moving: $\geq 5\text{m}$, $\leq \pm 50^\circ$ Stationary: $\geq 5\text{m}$, $\leq \pm 50^\circ$
2	Supported Detected Persons	1 person (nearest person detection)
3	Detection Time for Personnel Entering the Area	Moving target $\leq 500\text{ms}$; Stationary person presence $\leq 60\text{S}$
4	Detection Rate of Personnel Entering the Area	Moving detection rate: $\geq 98\%$ Stationary detection rate: $\geq 90\%$
5	False Detection Rate of Unmanned Condition	$\leq 0.5\%$ (in open space without vibration, moving targets such as curtain shaking, green plant swaying, fan rotation, etc.)
6	Detection Angle Error (Single Person)	$\leq \pm 10^\circ$ (the angle error will be larger when the distance is less than 2m and the angle is larger than 30°)

深圳市中龙通电子科技有限公司 CHINA DRAGON TECHNOLOGY LIMITED		Material Category	
Material Model	R601T3R03	Version	1.0
		Page	9/17

3.2. Product Functions and Application Logic

3.2.1. Radar Product Functional Block Diagram



This radar can separately implement functions such as presence detection of people in the current scene range, real-time trajectory detection of moving targets, etc. These detection parameters are then centrally processed by the application layer to realize radar scene detection and evaluation, as well as radar application processing.

The radar product sets three transmission mechanisms for the output of various parameter indicators:

- A. Active Reporting Mechanism
- B. Query Feedback Mechanism
- C. Issuance and Setting Mechanism

3.2.2. Application Layer Scheduling Mechanism

The radar has the following processing mechanisms at the application layer:

- (1) When the radar detects no one in the current scene, it only performs human presence/absence detection. In the unmanned environment, the radar will enter the low-power mode (reduced refresh rate) and wake up to the normal mode after detecting movement.
- (2) When the radar detects human movement in the area, it performs trajectory tracking and position monitoring.
- (3) The basic data detected by the above radar can be called by users to facilitate the secondary development of the user's application layer logic.

深圳市中龙通电子科技有限公司 CHINA DRAGON TECHNOLOGY LIMITED		Material Category	
Material Model	R601T3R03	Version	1.0
		Page	10/17

3.3. Interface Definition and Timing

3.3.1. Hardware Interface Definition

The external interface of the radar module is intended to adopt F05078-30P-TSMD vertical type.

Hardware Interface of Radar Module:

- 28/29/30 VCC_5V_RADAR: Power input of radar module, 5V power supplied independently by the main board
- 23 RADAR RX: RX of radar module, connected to TX of main board
- 22 RADAR TX: TX of radar module, connected to RX of main board
- 21 NRST: Radar reset pin, low level reset

深圳市中龙通电子科技有限公司 CHINA DRAGON TECHNOLOGY LIMITED		Material Category	
Material Model	R601T3R03	Version	1.0
		Page	11 / 17

- 20 HX-WAKEUP: IO of radar module, can be used as wake-up pin
- 19 LED_WHITE 2: Dual-color LED light control pin 2
- 18 KEYPAD-KEY1: Tact switch, single IO, low level trigger, pulled down when pressed
- 17 I2C_SDA_Sensor: I2C SDA of ambient light sensor
- 16 I2C_SCL_Sensor: I2C CLK of ambient light sensor
- 13 HVCC_MIC_5V: Independent 5V power supply for MIC, compatible with RGB light power supply
- 12 VCC33V_Sensor: 3.3V power supply pin for ambient light sensor, 3.3V supplied independently by the main board
- 11 LED_WHITE 1: White LED control pin / Dual-color LED control pin 1
- 10 VCC33V_STB: 3.3V power supply continuously provided by the main board without power failure, for R and white LED power supply
- 09 IR: Infrared IR signal output
- 07 PDM_DO: DATA of MIC chip output through AND gate
- 05 PDM_BCK: I2C CLK of MIC chip
- 03 RGB_LED_FF: RGB light effect control pin
- 01 Mute_MIC_Det: AND gate B pin of MIC circuit controlled by software

3.3.2. Software Interface Definition

See the Software Interface Protocol Document.

深圳市中龙通电子科技有限公司 CHINA DRAGON TECHNOLOGY LIMITED		Material Category	
Material Model	R601T3R03	Version	1.0
		Page	12 / 17

4. Reliability Test Requirements

Serial No.	Test Step	Test Condition	Judgment Standard
1	Low Temperature Storage Test (Millimeter Wave)	The module is unpowered, placed in a test chamber at -40°C (or the minimum storage temperature required by the module) for 24h, then taken out and recovered at room temperature for 1h before evaluation. Cross-hatch test shall be conducted on the whole machine shell with surface finishing.	a) Performance Test: No abnormality in voltage and current after the test; b) Functional Check: No abnormality in millimeter wave function after power-on inspection; c) Appearance Check: No poor soldering, no missing metal coating, no surface coating damage, no device damage, no connector abnormality, no shrapnel damage, no warping/delamination on PCB surface, no wrinkling of labels, clear label and marking content, no warping/deformation of shield, no obvious tactile scratches, no visible oxidation and rust spots.
2	High Temperature Storage Test (Millimeter Wave)	The module is unpowered, placed in a test chamber at 85°C (or the maximum storage temperature required by the module) for 24h, then taken out and recovered at room temperature for 1h before evaluation. Cross-hatch test shall be conducted on the whole machine shell with surface finishing. Note: The test shall be performed in accordance with the product specification input first; if there is no clear specification input, it is recommended to refer to -40°C/85°C.	Same as the judgment standard of Low Temperature Storage Test.
3	Temperature Shock Test (Millimeter Wave)	The module is unpowered, placed in a low temperature chamber at -40°C for 15s, then quickly moved to a high temperature chamber at +85°C within 15s and kept for 15s, then quickly returned to the low temperature chamber within 15s. This is one cycle, a total of 10 cycles. After the test, the prototype is taken out from the high temperature (high/low temperature chamber) and recovered at room temperature (20~25°C) for 1h	Same as the judgment standard of Low Temperature Storage Test.

深圳市中龙通电子科技有限公司 CHINA DRAGON TECHNOLOGY LIMITED		Material Category	
Material Model	R601T3R03	Version	1.0
		Page	13/17
		before appearance, structure and function inspection. Note: For modules with clear specification requirements, the test shall be conducted with reference to the upper and lower limit temperatures of high and low temperature storage tests in the module specification (e.g., TV modules are usually -40℃~85℃).	
4	Reliability (Temperature and Humidity Cycling Test)	<p>a) Conduct structural, appearance, functional and performance inspection on the prototype to be tested at room temperature.
b) The module is powered with nominal voltage, turned on and placed in an environmental test chamber with humidity of 25℃ in standby mode, and the test is carried out according to the following curve:
1) Rise from [25℃, 95% RH] to [65℃, 95% RH] within 2.5h and keep for 3h;
2) Drop to [25℃, 95% RH] within 2.5h;
3) Rise to [65℃, 95% RH] within 2.5h and keep for 3h;
4) Drop to [25℃, 95% RH] within 2.5h and keep for 1.5h;
5) Drop to [-10℃] within 0.5h and keep for 3h;
6) Rise to [25℃, 95% RH] within 1.5h and keep for 1.5h;
c) Steps (1) to (6) above are one cycle of 24h, a total of 2 cycles;
d) Conduct appearance and function test immediately after the test. If there is an abnormality in appearance and function, the prototype can be placed at room temperature for 30min and rechecked to judge whether the abnormal phenomenon can disappear.</p>	Same as the judgment standard of Low Temperature Storage Test.
5	Low Temperature Operation Test (Millimeter Wave)	The module is powered with nominal and limit voltage respectively, set to on state and kept in standby, placed in a test chamber at -25℃ (or the minimum operating temperature required by the module) for continuous operation for 8h. After the test, perform performance test and function, structure, appearance	Same as the judgment standard of Low Temperature Storage Test.

深圳市中龙通电子科技有限公司 CHINA DRAGON TECHNOLOGY LIMITED		Material Category	
Material Model	R601T3R03	Version	1.0
		Page	14 / 17
		inspection with a comprehensive tester in this environment. Note: The test shall be performed in accordance with the product specification input first; if there is no clear specification input, it is recommended to refer to -25℃.	
6	High Temperature Operation Test (Millimeter Wave)	The module is powered with nominal and limit voltage respectively, set to on state and kept in standby, placed in a test chamber at 80℃ (or the maximum operating temperature required by the module) for continuous operation for 8h. After the test, perform performance test and function, structure, appearance inspection with a comprehensive tester in this environment. Note: The test shall be performed in accordance with the product specification input first; if there is no clear specification input, it is recommended to refer to 80℃.	Same as the judgment standard of Low Temperature Storage Test.
7	Temperature Cycling Test (Millimeter Wave)	The module is powered with nominal voltage, placed in a high and low temperature test chamber in on state, kept at -30℃ for 30min, heated up to 85℃ at a rate of 10℃/min and kept for 30min, then cooled down to -30℃ at a rate of 10℃/min. This is one cycle, a total of 50 cycles. After the test, recover at room temperature for 1h and conduct function and performance inspection. Note: For modules with clear specification requirements, the test shall be conducted with reference to the upper and lower limit temperatures of high and low temperature operation tests in the module specification (e.g., TV modules are usually -10℃~70℃).	Same as the judgment standard of Low Temperature Storage Test.

深圳市中龙通电子科技有限公司 CHINA DRAGON TECHNOLOGY LIMITED		Material Category	
Material Model	R601T3R03	Version	1.0
		Page	15 / 17

5. Safety Certification Information

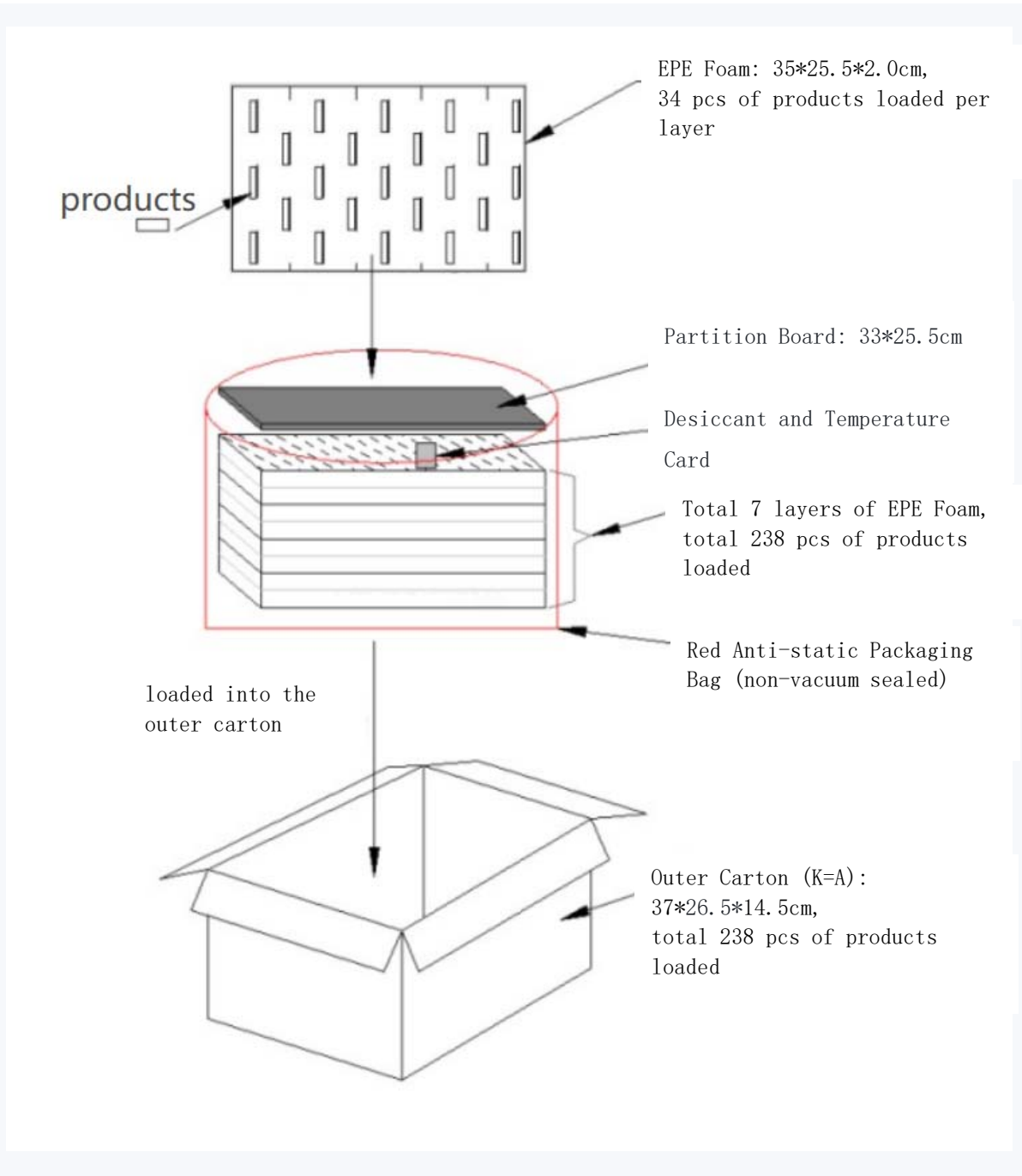
Non-safety part, no safety certification applicable.

6. Environmental Requirements

Raw materials, packaging materials and other materials used for components must comply with the chemical substance restriction requirements of Hisense Q/RSAG J15.002.

7. Packaging Specifications

深圳市中龙通电子科技有限公司 CHINA DRAGON TECHNOLOGY LIMITED		Material Category	
Material Model	R601T3R03	Version	1.0
		Page	16/17



8. Transportation and Storage Environmental Requirements

深圳市中龙通电子科技有限公司 CHINA DRAGON TECHNOLOGY LIMITED		Material Category	
Material Model	R601T3R03	Version	1.0
		Page	17 / 17

8.1. Transportation Requirements

8.1.1 Good packaging shall be provided during transportation to ensure that the product will not be damaged by environmental atmosphere or improper stress.

8.1.2 Severe impact or shock shall be avoided during transportation. The product shall be protected from water and moisture during transportation.

8.1.3 The temperature and humidity of the transportation environment shall meet the storage conditions.

8.1.4 When transporting electrostatic sensitive devices, they shall be placed in anti-static packaging, and an ion fan shall be used to eliminate static electricity generated during transportation if necessary.

8.2. Storage Requirements

8.2.1 The product must be stored in a clean, ventilated warehouse free of corrosive gas.

8.2.2 Items with anti-static requirements shall be stored in an anti-static environment.

8.2.3 The storage life of the device is one year. The storage warehouse temperature is -40~85°C, and the relative humidity is not more than 75%RH.

9 Normative References

GB 8702-2014 *Electromagnetic Environment Control Limits*

Radio Frequency Allocation Regulations of the People's Republic of China (2018.2.7)

Module integration Description

Integration instructions for host product manufacturers according to 996369 D03 OEM Manual v01r01

10.1 List of applicable FCC rules

CFR 47 FCC PART 15 SUBPART C has been investigated. It is applicable to the modular.

10.2 Specific operational use conditions

This module is stand-alone modular. If the end product will involve the Multiple simultaneously transmitting condition or different operational conditions for a stand-alone modular transmitter in a host, host manufacturer have to consult with module manufacturer for the installation method in end system.

10.3 Limited module procedures

Not applicable

10.4 Trace antenna designs

Not applicable

10.5 RF exposure considerations

To maintain compliance with FCC's RF Exposure guidelines, this equipment should be installed and operated with minimum distance of 20cm from your body.

10.6 Antennas

This radio transmitter FCC ID: ROWR2 has been approved by Federal Communications Commission to operate with the antenna types listed below, with the maximum permissible gain indicated. Antenna types not included in this list that have a gain greater than the maximum gain indicated for any type listed are strictly prohibited for use with this device.

Antenna Type	Maximum antenna gain
Microstrip patch	60G Radar module:5dBi

10.7 Label and compliance information

The final end product must be labeled in a visible area with the following "Contains FCC ID:ROWR2"

10.8 Information on test modes and additional testing requirements

Host manufacturer is strongly recommended to confirm compliance with FCC requirements for the transmitter when the module is installed in the host.

10.9 Additional testing, Part 15 Subpart B disclaimer

Host manufacturer is responsible for compliance of the host system with module installed with all other applicable requirements for the system such as Part 15 B

This device is intended only for OEM integrators under the following condition:

The transmitter module may not be co-located with any other transmitter or antenna. As long as the condition above is met, further transmitter test will not be required. However, the OEM integrator is still responsible for testing their end-product for any additional compliance requirements required with this module installed.

Cet appareil est conçu uniquement pour les intégrateurs OEM dans les conditions suivantes:

Le module émetteur peut ne pas être coïmplanté avec un autre émetteur ou antenne. Tant que les 1 condition ci-dessus sont remplies, des essais supplémentaires sur l'émetteur ne seront pas nécessaires. Toutefois, l'intégrateur OEM est toujours responsable des essais sur son produit final pour toutes exigences de conformité supplémentaires requis pour ce module installé.

Important Note:

In the event that these conditions cannot be met (for example certain laptop configurations or co-location with another transmitter), then the Canada authorization is no longer considered valid and the ISED cannot be used on the final product. In these circumstances, the OEM integrator will be responsible for reevaluating the end product (including the transmitter) and obtaining a separate Canada authorization. Any company of the host device which in stall this modular with limit modular approval should perform the test of radiated emission and spurious e mission according to RSS-210 and RSS Gen requirement, only if the test result comply with RSS-210 and RSS-Gen requirement, then the host can be sold legally.

Note Importante:

Dans le cas où ces conditions ne peuvent être satisfaites (par exemple pour certaines configurations d'ordinateur portable ou de certaines co-localisation avec un autre émetteur), l'autorisation du Canada n'est plus considéré comme valide et l'ISED ne peut pas être utilisé sur le produit final. Dans ces circonstances, l'intégrateur OEM sera chargé de réévaluer le produit final (y compris l'émetteur) et l'obtention d'une autorisation distincte au Canada. toute entreprise de l'hôte qui installent ce dispositif modulaire avec limite approbation devrait effectuer l'essai des modules et des rayonnements non essentiels des émissions rayonnées selon RSS-210 et le cnr - gen, seulement si le résultat d'essai conforme RSS-210 et le cnr -gen, puis l'hôte peut être vendu légalement.

End Product Labeling

The final end product must be labeled in a visible area with the following: Contains IC:23734-R2

Plaque signalétique du produit final

Le produit final doit être étiqueté dans un endroit visible avec l'inscription suivante: Contient des IC: 23734-R2.

Manual Information to the End User

The OEM integrator has to be aware not to provide information to the end user regarding how to install or remove this RF module in the user's manual of the end product which integrates this module.

The end user manual shall include all required regulatory information/warning as show in this manual.

Manuel d'information à l'utilisateur final

L'intégrateur OEM doit être conscient de ne pas fournir des informations à l'utilisateur final quant à la façon d'installer ou de supprimer ce module RF dans le manuel de l'utilisateur du produit final qui intègre ce module.

Le manuel de l'utilisateur final doit inclure toutes les informations réglementaires requises et avertissements comme indiqué dans ce manuel.

ISED Statement

This device contains licence-exempt transmitter(s)/receiver(s) that comply with Innovation, Science and Economic Development Canada's licence-exempt RSS(s). Operation is subject to the following two conditions:

(1) This device may not cause interference.

(2) This device must accept any interference, including interference that may cause undesired operation of the device.

Cet appareil contient des émetteurs/récepteurs sans licence qui sont conformes aux RSS sans licence d'Innovation, Sciences et Développement économique Canada. L'exploitation est soumise aux deux conditions suivantes :

(1) Cet appareil ne doit pas causer d'interférences.

(2) Cet appareil doit accepter toute interférence, y compris les interférences qui pourraient causer un fonctionnement indésirable de l'appareil.

ISED Radiation Exposure Statement:

This equipment complies with ISEDC RF radiation exposure limits set forth for an uncontrolled environment.

This transmitter must not be co-located or operating in conjunction with any other antenna or transmitter.

This equipment should be installed and operated with minimum distance 20cm between the radiator & your body.

Cet appareil est

conforme aux limites d'exposition de rayonnement RF ISEDC établies pour un environnement non contrôlé.

Cet émetteur ne doit pas être co-implanté ou fonctionner en onjunction avec toute autre antenne ou transmetteur.

Cet équipement doit être installé et utilisé avec une distance minimale de 20cm entre le radiateur et votre corps.

FCC WARNING

This device complies with part 15 of the FCC Rules. Operation is subject to the following two conditions: (1) This device may not cause harmful interference, and (2) this device must accept any interference received, including interference that may cause undesired operation.

Any changes or modifications not expressly approved by the party responsible for compliance could void the user's authority to operate the equipment.

This equipment has been tested and found to comply with the limits for a Class B digital device, pursuant to part 15 of the FCC Rules. These limits are designed to provide reasonable protection against harmful interference in a residential installation. This equipment generates, uses and can radiate radio frequency energy and, if not installed and used in accordance with the instructions, may cause harmful interference to radio communications. However, there is no guarantee that interference will not occur in a particular installation. If this equipment does cause harmful interference to radio or television reception, which can be determined by turning the equipment off and on, the user is encouraged to try to correct the interference by one or more of the following measures:

- Reorient or relocate the receiving antenna.
- Increase the separation between the equipment and receiver.
- Connect the equipment into an outlet on a circuit different from that to which the receiver is connected.
- Consult the dealer or an experienced radio/TV technician for help.

FCC Radiation Exposure Statement

This equipment complies with FCC radiation exposure limits set forth for an uncontrolled environment .

This transmitter must not be co-located or operating in conjunction with any other antenna or transmitter.

This equipment should be installed and operated with minimum distance 20cm between the radiator& your body.

The product not to use on aircraft or satellites.