

Before the first use

⚠ Before commissioning the tumble dryer for the first time, make sure it has been installed correctly. Connect it correctly. Please read the separate operating instructions supplied with the appliance.



⚠ Damage caused by switching the appliance on too soon. The heat pump can be damaged. After installing the tumble dryer, wait for at least one hour before starting a drying program.

Switching on the tumble dryer

- Press the button.

The welcome screen will light up.

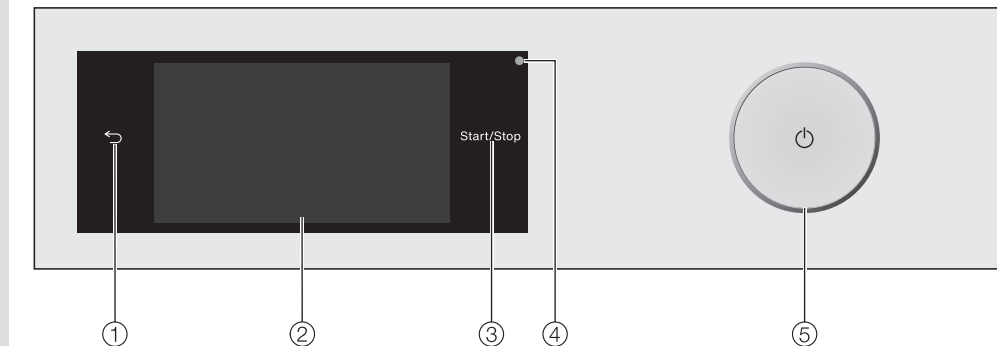
The display will guide you step by step through the initial commissioning process.

For additional information please refer to the separate operating instructions supplied.

Energy savings

- Spin the laundry at the maximum spin speed in the washing machine
- Dry a full load size
- Keep room temperature not too warm
- Clean the lint filters

Operation



1. sensor button

Takes you back one level in a menu.

2. Touch display

3. Start/Stop sensor button

Touching the Start/Stop sensor button starts the selected program or cancels a program that has already been started. The program can be started as soon as the sensor button is flashing on and off. The sensor button lights up constantly once the program has started.

4. Optical interface

For Service.

5. touch button

For switching the tumble dryer on and off. The tumble dryer switches off automatically to save energy. This occurs 15 minutes after the end of the program/Anti-crease phase, or after being switched on if no further selection is made.

Main menu

After switching on the tumble dryer, the main menu will appear in the display. You can access all the important submenus from the main menu. Touch the sensor button at any time to return to the main menu. Values set previously are not saved.

Programs

For selecting drying programs.

Favorites

You can save your own customized drying programs.

MobileStart

With *MobileControl* you can operate your tumble dryer remotely with the Miele app.

Drying Assistant

The Drying assistant guides you step by step so that you can select the optimum drying program for your laundry.

Settings

You can alter the tumble dryer's electronics to suit changing requirements in the *Settings* menu.

Operating the touch display

Scrolling

You can scroll to the right or the left by swiping your finger across the screen. The orange scroll bar under the pictures shows that there are additional options to choose from.

Touch display and sensor buttons

The and *Start/Stop* sensor buttons and the sensor buttons in the display react to finger tip contact.

The touch display can be scratched by pointed or sharp objects, e.g., pens. Only touch the display with your fingers.

Drying

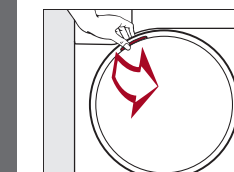
Preparing the laundry

⚠ Damage due to foreign objects which were not removed from the laundry. Foreign objects can melt, burn, or explode.

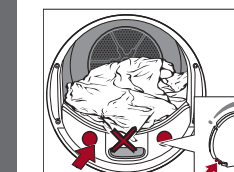
- Ensure that any foreign objects (e.g., detergent dispensing balls, loose bra wires, lighters) have been removed from the laundry.
- Fasten duvet covers and pillow cases to prevent small items from being rolled up inside them.

Loading the tumble dryer

Do not overload the drum. Overloading can give a disappointing drying result and cause unnecessary wear and tear to the laundry. It can also cause more creasing.

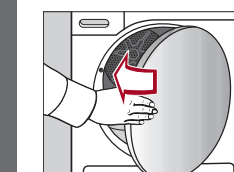


- Loosen the laundry.
- Open the tumble-dryer door.
- Check that the drum is empty.
- Load the laundry in the drum.
- Insert the fragrance flacon.

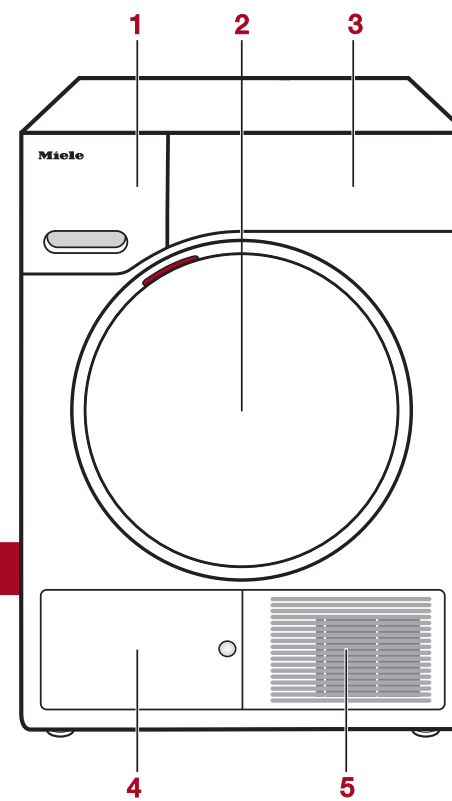


If you are drying without a fragrance flacon, close both sockets. Push the tabs on both covers to the bottom (see arrows).

- Shut the tumble-dryer door gently.



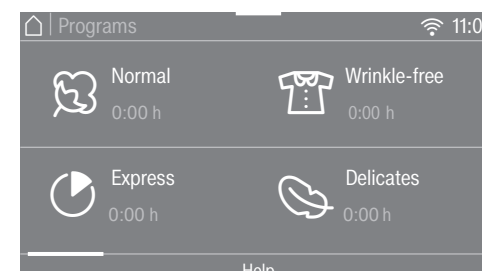
Risk of damaging laundry. When closing the door, make sure that laundry does not get trapped in the door opening.



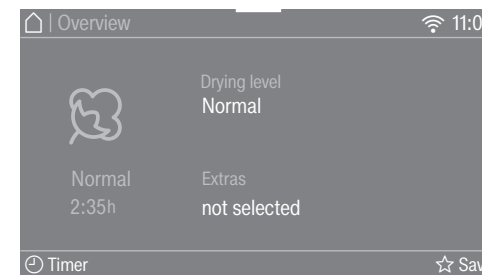
- 1 Condensed-water container
- 2 Door
- 3 Control panel
- 4 Plinth-filter flap
- 5 Grille for cold-air intake

1. Selecting a program

- Touch the Programs sensor button.



- Scroll to the right in the display until the program you want appears.



- Touch the sensor button for that program.
- You can change the drying level or the Duration.

The display will change to the Overview menu.

There are 3 additional ways of selecting a program.

1. Favorites
2. Drying assistant
3. MobileStart

2. Selecting program settings

Tip: The condensed-water container must be filled to use certain programs.

Selecting the drying level

Drying levels can be selected for certain programs as per the "Program overview" table.

- Touch the Drying level sensor button.
- Scroll in the display until the drying level you want appears.
- Touch the sensor button for the drying level.

Selecting the program cycle time

You can select a program cycle time for the *Time Dry*, *Cold Air*, *Basket*, and *DryFresh* programs.

- Touch the Duration sensor button.

Place your finger on the number that you want to change and move your finger in the direction you want.

- Confirm with the OK sensor button.

Selecting an extra option

Extra options can be selected for certain programs as per the "Program overview" table.

- Touch the Extras sensor button.

Touch the sensor button for the extra option you want.

- Confirm with the OK sensor button.

Freshen up

Odors are reduced or removed from clean (dry or damp) clothing.

Gentle

Delicate fabrics with the symbol on the care label, e.g., acrylic garments, are dried at a lower temperature.

3. Starting a program

- Touch the flashing *Start/Stop* sensor button.

The *Start/Stop* sensor button lights up and the program starts.

Adding or removing laundry

You have forgotten an item of laundry, but the program has already started.

- Touch the Add laundry sensor button*.

Add laundry and The door can be opened, light up in the display. The *Start/Stop* sensor button will flash slowly.

- Open the tumble-dryer door.

- Add or remove laundry items.

- Close the door.

- Touch the *Start/Stop* sensor button.

The program starts.

* Exceptions

In some cases – for example, during the cooling phase or the *Proofing* program – it is not possible to add laundry items.

Canceling the current program

You cannot change to another program once a program has started. This prevents the appliance being operated unintentionally.

You will need to cancel the current program before you can select a new one.

- Touch the *Start/Stop* sensor button.

The following will appear in the display:

- Cancel the program?

- Select yes.

The following will appear in the display: Program cancelled

- Open and close the tumble-dryer door.

- Select a program.

- Touch the *Start/Stop* sensor button.

Program end

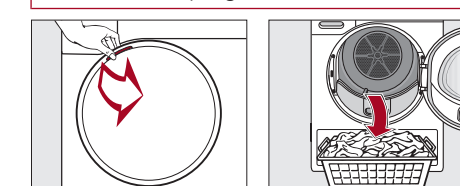
Program end

The program is finished when Finish/Anti-crease appears in the display. The *Start/Stop* sensor button will no longer light up.

- 10 minutes after the end of the program, the *Start/Stop* sensor button will begin to flash slowly and the display will go out.

- The tumble dryer switches off automatically.

Do not open the tumble-dryer door before the end of the program.



- Open the door.

- Remove the laundry.

Items left in the tumble dryer could be damaged by over-drying when the dryer is used the next time. Always remove all items from the drum.

- Switch the tumble dryer off with the button.
- Clean the lint filters.
- Close the drum door.
- Empty the condensed-water container.

If the tumble dryer is switched on at the power supply and the door is opened, the drum lighting will go out after a few minutes to save energy.

- Switch the tumble dryer off with the button.
- Clean the lint filters.
- Close the drum door.
- Empty the condensed-water container.

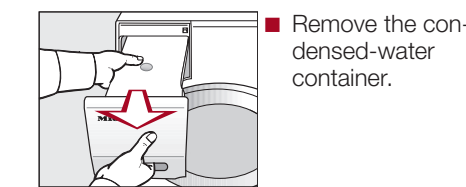
- Empty the condensed-water container.

Emptying the condensed-water container

Empty the condensed-water container after every drying program.

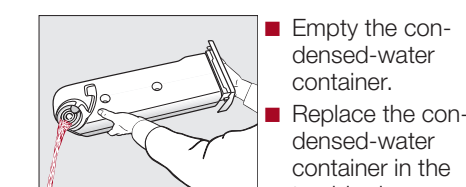
The Empty the container or check the drain. Indicator will light up if the maximum level of the condensed-water container is reached.

- Open and close the door to deactivate this message.



- Remove the condensed-water container.

- To prevent water running out, hold the condensed-water container by the front panel and at the back to keep it in a horizontal position.



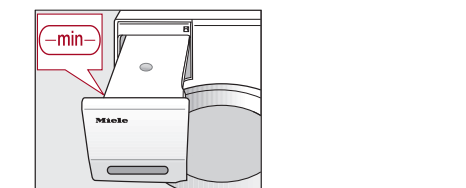
- Empty the condensed-water container.

- Replace the condensed-water container in the tumble dryer.

Filling the condensed-water container

The condensed-water container must be filled to the -min- marker for the *Soft-Steam* program.

With the condensed water draining externally, the condensed-water container is empty. Only fill with commercially available condensed water.



- To stop the spray jet becoming calcified, only fill with tap water in exceptional circumstances.

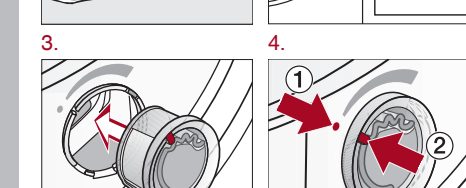
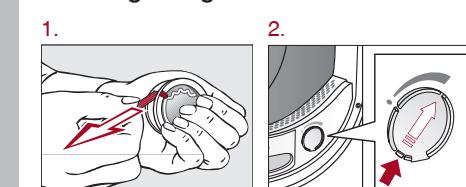
FragranceDos

Tip: This tumble dryer has 2 sockets for inserting fragrance flacons. You can use one or both sockets to give your laundry a pleasant scent.

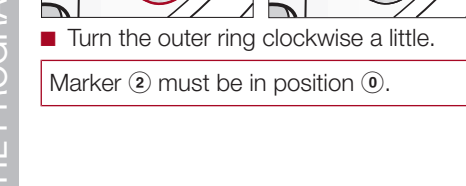
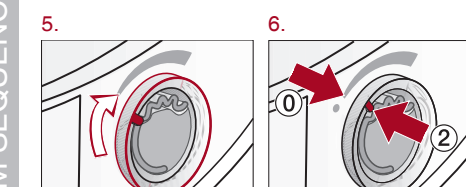
Close the unused socket.

Before using a fragrance flacon, please read "IMPORTANT SAFETY INSTRUCTIONS – Using a fragrance flacon (optional accessory)" and "Fragrance flacon" in the operating instructions.

Inserting a fragrance flacon



Marker 2 must be in position 1.



Marker 2 must be in position 0.

Setting the fragrance intensity

The further you turn the outer ring of the fragrance flacon clockwise, the more intense the fragrance.

Closing the fragrance flacon

Turn the outer ring counter-clockwise until marker 2 is in position 0.

Removing the fragrance flacon

Turn the outer ring until marker 2 is in position 1.

Remove the fragrance flacon.



To prevent any fragrance running out of the flacon, do not lay it down on any surface.

Only store the fragrance flacon in its original packaging.



fold here

fold here

fold here

fold here

fold here

fold here

Program	Load (weight of dry laundry)	Laundry type	Extra options
Normal	17.6 lb (8 kg)	T-shirts, underwear, baby clothes, workwear, jackets, covers, aprons, overalls, hand towels, bath towels, bathrobes, and flannel/bed linen are suitable; do not use Extra dry for T-shirts, underwear, or baby clothes	(A), (B)
Express	8.8 lb (4 kg)	Resilient garments (suitable for the Normal program)	-
Wrinkle free	8.8 lb (4 kg)	Workwear, overalls, pullovers, dresses, pants, table linen, leggings	(A), (B)
Delicates	5.7 lb (2.5 kg)	Dress shirts, blouses, lingerie, appliquéd garments	(B)
Dress Shirts	4.4 lb (2 kg)	Shirts, blouses	(A), (B)
Denims	6.6 lb (3 kg)	Pants, jackets, skirts, shirts	(A), (B)
Woolens	4.4 lb (2 kg)	Pullovers, cardigans, socks, leggings	-
Silks	2.2 lb (1 kg)	Silk garments which are suitable for tumble drying, e.g., shirts/blouses or lingerie	-
Bed Linen	8.8 lb (4 kg)	Bed linen, pillowcases	-
Table Linens/Drapes	8.8 lb (4 kg)	Table linen, drapes, curtains	(B)
Outerwear	5.5 lb (2.5 kg)	Outdoor clothing	-
Proofing	5.5 lb (2.5 kg)	Microfiber fabrics, skiwear, outdoor clothing, fine, close weave cotton garments (poplin), tablecloths	-
Time Dry	17.6 lb (8 kg)	Thick and multi-layered jackets, pillows, sleeping bags, blankets	(B)
Cold Air	17.6 lb (8 kg)	Any items that need to be aired	-
DryFresh	17.6 lb (8 kg)	All fabrics (to air or freshen up)	-
SoftSteam	2.2 lb (1 kg)	Use with DryFresh fragrance flacon (optional accessory)	-
Pillows	-	Pillows: 2 small 15 3/4" x 30 1/2" (40 x 80 cm) or 1 large 31 1/2" x 31 1/2" (80 x 80 cm)	-
Smoothing	2.2 lb (1 kg)	Cotton pants, jackets, shirts	(B)
Basket	Max. load for basket 7.7 lb (3.5 kg)	Bags, shoes, caps, scarves, gloves, sequined tops	-

(A) = Freshen up; (B) = Gentle
X = yes, - = no

Care symbols

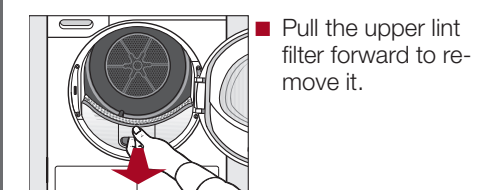
Symbol	Drying	Ironing
	Normal/higher temperature	Very hot
	Reduced temperature (for delicate fabrics); select Gentle	Hot
	Do not tumble dry	Warm
	Do not treat with heat	

PROGRAM GUIDE

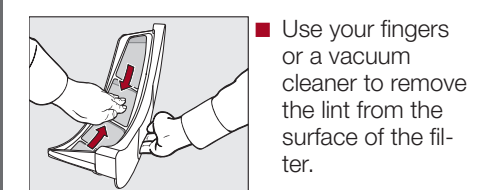
Lint filters

Removing visible lint
Clean the 2 lint filters in the door opening at the end of every program.

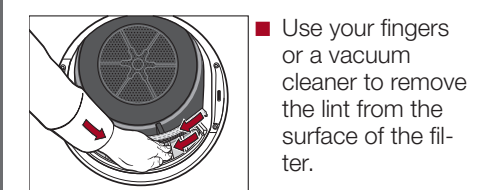
Remove the fragrance flacon.



■ Pull the upper lint filter forward to remove it.



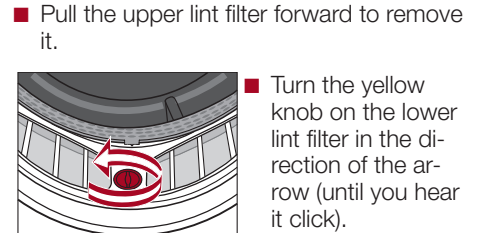
■ Use your fingers or a vacuum cleaner to remove the lint from the surface of the filter.



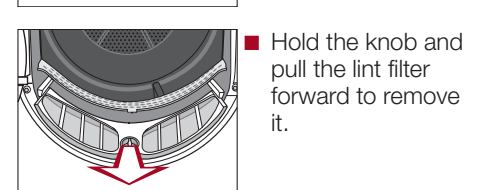
■ Push the upper lint filter back into position until it clicks.
■ Close the door.

Cleaning the lint filters and air-flow openings thoroughly

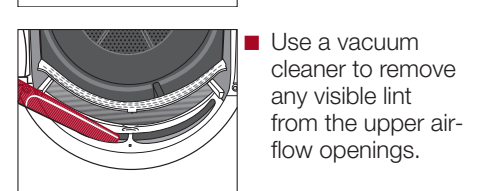
If the drying duration has become longer or the surface of the filters is visibly compacted with lint, you should carry out the following cleaning procedure.



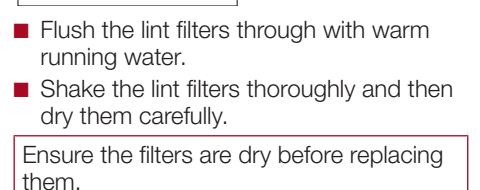
■ Pull the upper lint filter forward to remove it.



■ Turn the yellow knob on the lower lint filter in the direction of the arrow (until you hear it click).



■ Hold the knob and pull the lint filter forward to remove it.



■ Use a vacuum cleaner to remove any visible lint from the upper air-flow openings.

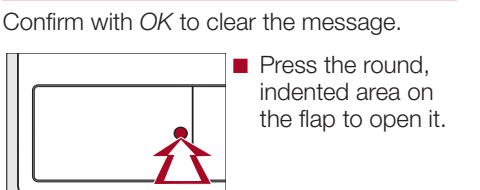
■ Flush the lint filters through with warm running water.
■ Shake the lint filters thoroughly and then dry them carefully.

Ensure the filters are dry before replacing them.

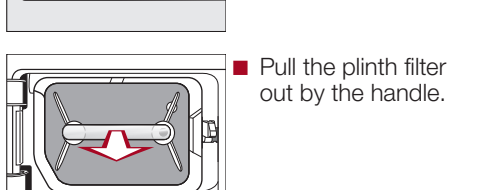
■ Reinsert all of the lint filters and close the door.

Plinth filter

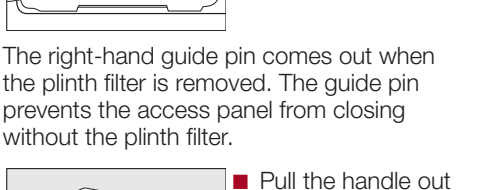
Clean the plinth filter when the program cycle time is longer than usual. Clean it whenever the Clean the lint and plinth filters. See the Operating Instructions for more information. message lights up too.



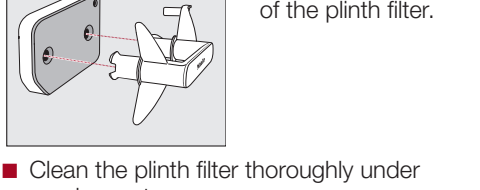
Confirm with OK to clear the message.
■ Press the round, indented area on the flap to open it.



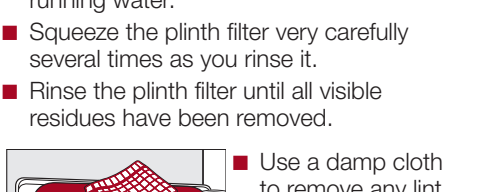
■ Pull the plinth filter out by the handle.



■ Pull the handle out of the plinth filter.

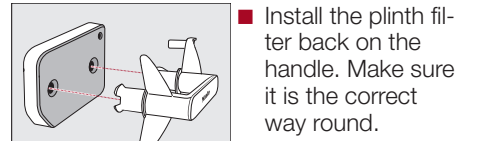


■ Clean the plinth filter thoroughly under running water.
■ Squeeze the plinth filter very carefully several times as you rinse it.
■ Rinse the plinth filter until all visible residues have been removed.

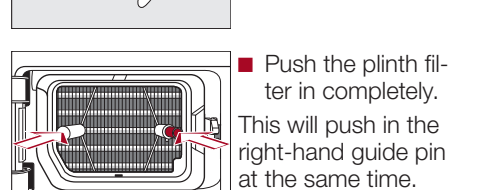


■ Use a damp cloth to remove any lint.

Reinserting the plinth filter



■ Install the plinth filter back on the handle. Make sure it is the correct way round.



■ Push the plinth filter in completely. This will push in the right-hand guide pin at the same time.

■ Close the flap.

Problem	Possible cause and solution
lights up after switching on	Access via a PIN code has been activated. ■ You must enter the correct PIN code to use the tumble dryer. See "Settings menu – PIN Code" in the operating instructions.
lights up after a program has been canceled	The condensed-water container is full or there is a kink in the drain hose. ■ Open and close the door with the tumble dryer switched on to clear the fault. Or switch the tumble dryer off and then on again. ■ Empty out the condensed-water container. ■ Check the drain hose.
lights up at the end of a program	There is a build-up of lint. ■ To deactivate the message, confirm with OK. ■ See "Cleaning and care" in the operating instructions. ■ Clean the lint filter. ■ Clean the plinth filter.
lights up after a program has been canceled	There is a blockage due to a build-up of lint. ■ See "Cleaning and care" in the operating instructions. ■ Clean the lint filter. ■ Clean the plinth filter. ■ Clean the air flow openings. ■ Clean the heat exchanger.
Fill condensate container with water	The condensed-water container is empty. Water is taken and recycled from the condensed-water container when certain programs are being used. ■ To deactivate the message, confirm with OK. ■ Fill the condensed-water container to at least the —min— marker.
Finish/Cooling Down	The laundry will be cooled down at the end of the program. ■ Either remove the laundry and spread it out to cool down or leave it in the tumble dryer to cool down during the cooling phase.

CLEANING AND CARE

Problem	Possible cause and solution
The display is in a different language	A different language has been selected in "Settings, Language". ■ Set the language you want. The flag symbol will guide you.
The display remains dark, and the sensor button does not light up or flash	There is no power to the tumble dryer. ■ Check whether the electrical plug is plugged in. ■ Check whether the breaker has tripped. The tumble dryer has switched off automatically to save energy. ■ Switch the tumble dryer on.
The laundry is not sufficiently dry	The load consisted of different types of fabric. ■ Finish drying using the <i>Time Dry</i> program. ■ Select a more suitable program next time.
Items made of synthetic fibers are charged with static electricity after drying	Items made of synthetic fibers can become charged with static electricity in the tumble dryer. ■ Static charge can be reduced by adding a fabric softener to the final rinse in the washing program.
Lint is caused by tumble drying	Lint is principally the result of friction when garments are being worn and to some extent when they are being washed. Machine drying hardly causes any lint to form. Lint is collected by the lint filters and the plinth filter. ■ See "Cleaning and care" in the operating instructions.
You can hear operating noises (buzzing/humming)	This is not a fault. The compressor (heat pump) is operating. Or you have selected a program which sprays condensed water into the drum. ■ No action required.

FREQUENTLY ASKED QUESTIONS



Quick Start Guide
Heat-Pump Dryer



These short instructions are not a substitute for the operating instructions supplied with the appliance! It is essential to familiarize yourself with the dryer before using it for the first time. Take note of the operating instructions, as well as the "IMPORTANT SAFETY INSTRUCTIONS".