

PLUG-IN & PORTABLE WIRELESS CALLING SYSTEM

CR05-32WH Series User Manual



HOW IT WORKS

Helping you live a better life in your old age

1



1.Home Care

2



2.Nursing Home

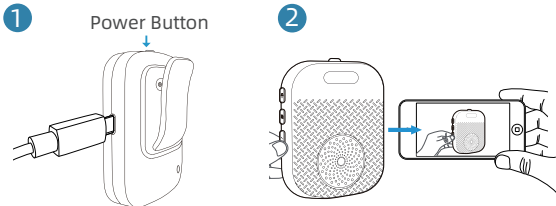
3




3.Easy to Carry

QUICK START GUIDE

Thank you for choosing the Wireless Caregiver Pager Set. All transmitters and receivers are pre-paired before shipment. Please take about 5 minutes to get familiar with the product and test its functions before use.



① For the CR32WH receiver, please charge for 1 hour first, then press and hold the top **Power Button**  for 5-10 seconds to turn it on.

Power On: “Di” sound + one flash

Power Off: “Di-Di” sound + two flashes

② If you'd like to change the ringtone or re-pair the devices, please **scan the QR code** to watch the operation video (see page 08).

RECEIVER CHARGING GUIDE

Charging Indicator: The LED is red during charging and turns green when fully charged.



Low Battery Warning: Light flashes every 7 seconds and “di di di” is announced.



COMES WITH ALL YOU NEED

After opening the package and before use, please check that the following accessories are included. If you have any missing parts, please contact us.



USB Receiver CR32WH



Plug-in Receiver CR05WH



Transmitter CT02WB



Screwdriver



Transmitter WB01RE



Stickers



Lanyard

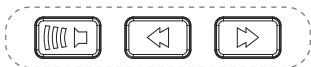
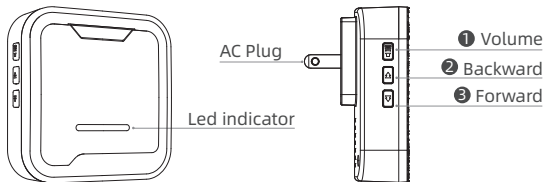



Type-C cable

Warm Reminder:

The package details depends on the number of sets you purchase.

CR05WH Plug-in Receiver



1 Pair Transmitter: Long press  for 3-5s.

2 Clear Pairing: Long press  for 3-5s.



Adjustable Volume
(0 -110dB)

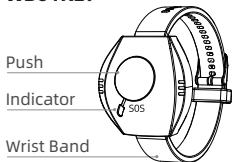


55
Ringtones

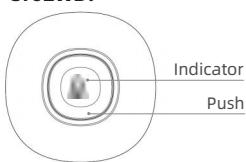


LED
Indicator

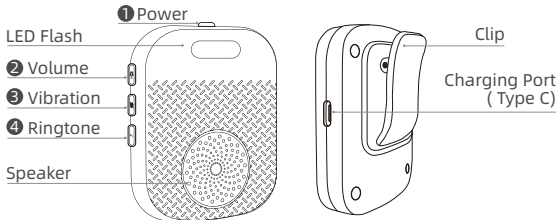
WB01RE:







CT02WB:



CR32WH Receiver



- 1 Pair Transmitter: Long press  for 3-5s.
- 2 Clear Pairing: Long press  for 3-5s.
- 3 Stop Ringing: Short press the  button.
- 4 Vibration On/Off: Short press the  button.



Adjustable
Volume
(0 -110dB)



18
Ringtones



Vibration
Alert



Low Battery
Reminder

Specification

Model	CR05WH/CR32WH	CT02WB	WB01RE
Type	Receiver	Transmitter	Transmitter
Power	Plug-in / Portable	12V, 23A	CR2032
Frequency	433Mhz	433Mhz	433Mhz
Working Range	500ft/152m	500ft/152m	200ft/90m
Waterproof Level	X	IP55	IP55

For FAQs and more information, please visit:



Support Resources


- Instructional Videos
- Troubleshooting Guide
- Manuals in Multiple Languages(Available in: Japanese, French, German, Spanish, Italian, English)

Email us at:
aftersale-help@outlook.com


IC CE RoHS FC  
Made in China

OPERATING INSTRUCTIONS

Pair More Transmitters & Select Ringtone (CR32WH)

Step 1: Long Press the  button.
Turn on the device;



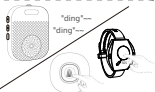
Step 2: Press the  button
to select a ringtone;



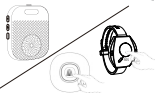
Step 3: Hold  button until
"ding" sound and LED light flashes ;



Step 4: Press call button, receiver
makes "ding-ding" sound and LED
light flashes;





Step 5: Press call button to confirm
Receiver rings.



Pair More Transmitters & Select Ringtone (CR05WH)

Step 1: Plug the receiver into a power outlet.;



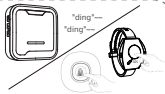
Step 2: Press the  or  button to select a ringtone;



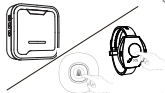
Step 3: Hold  button until "ding" sound and LED light flashes ;



Step 4: Press call button, receiver makes "ding-ding" sound and LED light flashes;




Step 5: Press call button to confirm Receiver rings.



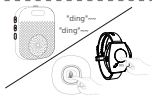
Clear All Settings-CR32WH/CR05WH

CR32WH:


Step 1: Press the  button to make a "ding" sound



Step 2: Waiting for 30s, you hear receiver sound a "dingding" and its light blinks.

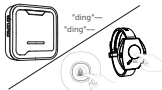


CR05WH:

Step 1: Press the  button to make a "ding" sound



Step 2: Waiting for 20s, you hear receiver sound a "dingding" and its light blinks.

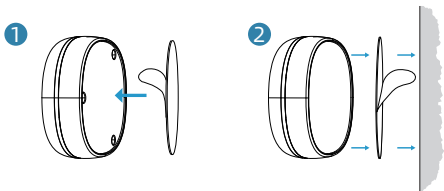


i Tip: Once you complete **Step 1**, the receiver is in pairing mode. A quick press of the call button will pair it with a "ding" sound. But did you know? This shortcut skips ringtone selection. This is why we recommend using the standard pairing process.

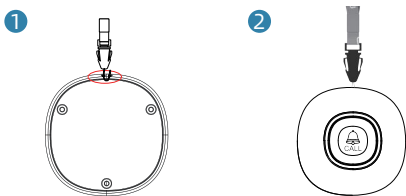
Installing the CT02WB Transmitter Button

The CT02WB transmitter button can be installed in a variety of ways, depending on your preference and convenience. The packaging includes stickers, and a lanyard for different installation options.

Option 1: Wall Mounting with Sticker



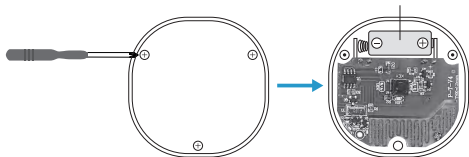
Option 2: Wearing with Lanyard



Replacing Battery

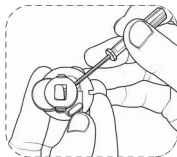
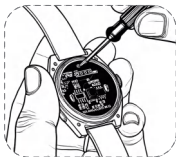
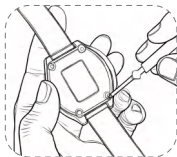
CT02WB:

23A 12V alkaline battery



- 1 Remove the screw on the cover and open the cover.
- 2 Insert one 23A 12V alkaline battery (separate one), being careful of the $\oplus\ominus$ direction.
- 3 Close the cover and secure it with the screw.

WB01RE:



- 1 Unscrew the screws.
- 2 Pry open the cover.
- 3 Replace the battery.

TROUBLESHOOTING

Q Q1: Why is the pager system not working?

- A** If the pager system does not work, please check the following:
1. Receiver check: Press the volume button. If there is no sound or flash, make sure the receiver is powered on and not in silent mode.
 2. Transmitter check: Press the transmitter. If the indicator does not light up, replace the battery.
 3. Re-pair the devices: Clear all pairing records and pair them again. See "Clear All Settings - CR32WH / CR05WH" on page 11.
 4. Check the range: Make sure the devices are within the operating range.

Q Q2: Do I need to pair the receiver and transmitter myself?

- A** No, they are pre-paired at the factory.

Q Q3: How do I change the default ringtone?

- A** To change the default ringtone, select your preferred one and re-pair the devices. For detailed steps, refer to the section "Pair More Transmitters & Select Ringtone" on page 10-11.

Q Q4: Can I purchase multiple sets and pair them together?

- A** Yes, the system is easily expandable:
1. One receiver can pair with up to 30 transmitters. Just repeat the pairing process.
 2. Other models of receivers and call buttons may work together, but compatibility is not guaranteed. Please contact us to confirm before use, as performance may vary depending on distance limitations.
 3. For more information, please contact our customer service team.

Q Q5: Can I wear the transmitter in the shower?

- A** We recommend adding a wall-mounted or pendant transmitter next to the bathtub or toilet within easy reach. Acceptable for Meal/ Soup Splash, but is not recommended to be worn in the shower.

Q Q6: The receiver is ringing abnormally.

Q7: Extra purchased buttons cannot be paired.

- A** A6/A7: To fix this issue:
1. Unplug and replug the receiver. Turn it off, then back on.
 2. Clear all pairing records and re-pair the devices. For detailed steps, refer to the section "ClearAll Settings-CR32WH/CR05WH" on page 11.
 3. If the issue persists, please contact us.