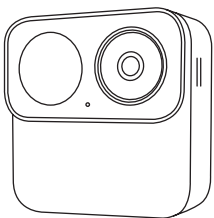


Argus MagiCam

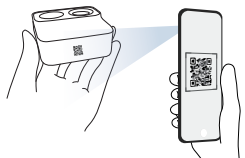
Operational Instructions



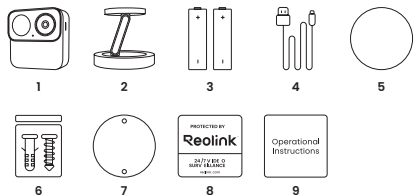
@ReolinkTech <https://reolink.com>

Item No. : B210

Tap the button in the top corner, scan the camera's QR code, and follow the on-screen instructions to complete the setup.



01 What's in the Box



1. Camera
2. Magnetic Bracket
3. AA Batteries*
4. USB-C Cable
5. Magnetic Mount Pad
6. Pack of Screws
7. Mounting Template
8. Surveillance Sticker
9. Operational Instructions

NOTE:
The camera is compatible with AA Lithium batteries only.

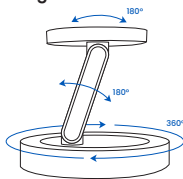
04 Installation Tips

01/Installation Tips

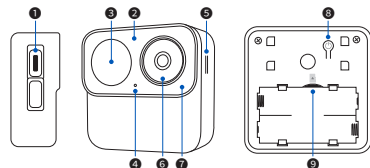
- Position the camera 2-3 meters (7-10 ft) above the ground to maximize the PIR motion sensor's detection range.
- For optimal detection, install the camera at an angle where movement crosses its detection zones.

NOTE:
If a subject moves straight toward the camera, the PIR sensor may fail to detect motion.

02/Adjustable Angles



02 Device Overview



1. USB-C Port
2. IR LED
3. PIR Motion Sensor
4. Microphone
5. Speaker
6. Daylight Sensor
7. Status Light
8. Power/Reset Button
9. microSD Card Slot

Power Button Functions:

- Power on:** Press and hold the button for 3 seconds.
- Power off:** Press and hold the button for 3 seconds.
- Factory reset:** Triple-press the button while the camera is on.

Status Indicators

- Solid Blue:** Wi-Fi connected successfully
- Flashing Red:** Wi-Fi connection failed

03 Set up the Device

Set up the Camera Using a Smartphone

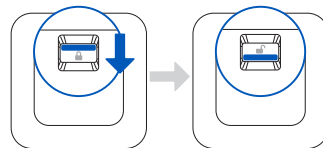
Scan to download the Reolink App from the App Store or Google Play store.



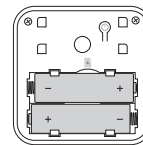
Download on the
App Store

GET IT ON
Google Play

Slide the latch to unlock and remove the battery cover.



Insert the battery following the indicated direction.



NOTE:
You can also power the device with an adapter (no battery required). When both are connected, the adapter supplies power, and the batteries remain inactive and will not charge.

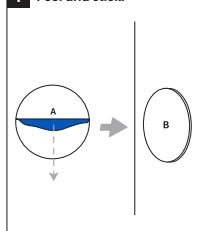
Scan the QR code below for more information on using lithium AA batteries



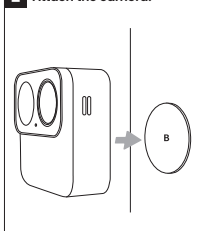
05 Installation Steps

A Magnetic Mounting

1 Peel and stick.



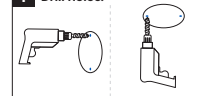
2 Attach the camera.



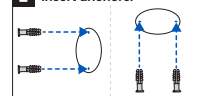
NOTE:
Mount the camera on any clean, flat surface using the magnetic pad, or attach it directly to a metal surface.

B Wall/Ceiling Mounting

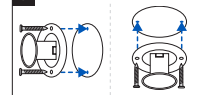
1 Drill holes.



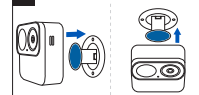
2 Insert anchors.



3 Attach the base.



4 Mount the camera.

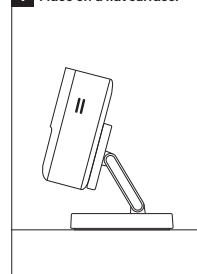


5 Adjust to optimal angle.

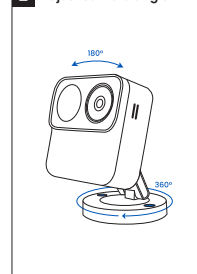


C Tabletop Placement

1 Place on a flat surface.



2 Adjust camera angle.



NOTE:
For a more secure mount, you can screw the base in place. This keeps it from moving when removing the camera.

06 Specifications

Dimensions: 68 * 68 * 28.8 mm
Weight: 108 g
Operating Temperature: -10°C to 55°C (14°F to 131°F)
Operating Humidity: 20%-85%
Weather Resistance: IP67 certified weatherproof

For more specifications, visit the Reolink official website.

07 Troubleshooting

Camera is Not Powering On

Replace with new standard AA Lithium batteries and make sure they are properly connected in the battery compartment.

Failed to Connect to Wi-Fi During Initial Setup Process

If the camera fails to connect to Wi-Fi, please try the following solutions:

- Ensure that you have entered the correct Wi-Fi password.
- Put the camera closer to your router to ensure a strong Wi-Fi signal.

harmful interference to radio communications. However, there is no guarantee that interference will not occur in a particular installation. If this equipment does cause harmful interference to radio or television reception, which can be determined by turning the equipment off and on, the user is encouraged to try to correct the interference by one or more of the following measures:

- Reorient or relocate the receiving antenna.
- Increase the separation between the equipment and receiver.
- Connect the equipment into an outlet on a circuit different from that to which the receiver is connected.
- Consult the dealer or an experienced radio/TV technician for help.

FCC Radiation Exposure statement

This equipment complies with FCC radiation exposure limits set forth for an uncontrolled environment. This equipment should be installed and operated with minimum distance 20cm between the radiator & your body.

ISED Compliance Statements

This device complies with Industry Canada licence-exempt RSS standard(s). Operation is subject to the following two conditions:
(1) this device may not cause interference, and
(2) this device must accept any interference, including interference that may cause undesired operation of the device.

The equipment should be installed and operated with a minimum

- Change the encryption method of the Wi-Fi network to WPA2-PSK/WPA-PSK on your router interface.
- Change your Wi-Fi SSID or password and make sure that SSID is within 31 characters and password is within 64 characters.
- Set your password using only the characters available on the keyboard.

If the problem is not solved, please contact Reolink Support.

08 Important Safety Instructions

Please read the instructions carefully before using the device.

- If you use a power adapter to power the camera, please use a DC 5V adapter recommended by the manufacturer.
- Insert the batteries in the correct orientation as indicated by the positive (+) and negative (-) markings in the battery compartment. Always use non-rechargeable AA 1.5V lithium (lithium metal) batteries as provided and specified for this product. Using incorrect batteries may pose an explosion risk.
- Do not charge the included non-rechargeable batteries. And use it only in temperatures ranging from -10°C and 55°C.
- Do not insert batteries in reverse. Batteries installed incorrectly may short-circuit or become charged, causing overheating, leakage, venting, rupture, explosion, fire, or personal injury.
- Do not short-circuit batteries. If the + and - terminals come into contact (e.g., with keys or coins in a pocket), a short circuit may occur, resulting in leakage, venting, explosion, fire, or personal injury.

distance of 20 cm between the radiator and your body.

Le présent appareil est conforme aux CNR d'Industrie Canada applicables aux appareils radio exempts de licence. L'exploitation est autorisée aux deux conditions suivantes :

- (1) L'appareil ne doit pas produire de brouillage, et
 - (2) l'utilisateur de l'appareil doit accepter tout brouillage radioélectrique subi, même si le brouillage est susceptible d'en compromettre le fonctionnement.
- Cet équipement doit être installé et utilisé avec une distance minimale de 20 cm entre la source de rayonnement et votre corps.

MODIFICATION: Any changes or modifications not expressly approved by the grantee of this device could void the user's authority to operate the device.

MODIFICATION : les changements ou modifications non expressément approuvés par le fournisseur de licence de l'appareil sont susceptibles d'annuler l'autorisation accordée à l'utilisateur de se servir de l'équipement.

This Class B digital apparatus complies with Canadian ICES-003. Cet appareil numérique de la classe B est conforme à la norme NMB-003 du Canada.

Operation of 5150-5350 MHz is restricted to indoor use only. Le fonctionnement de 5150-5350 MHz est limité à une utilisation en intérieur uniquement.

- Do not expose the camera with batteries to extremely low air pressure environments, as this may cause an explosion.
- Do not place the camera with batteries in high-temperature environments or expose it to direct lightning, as this may pose a fire risk.
- Do not strike or heavily compress the camera while batteries are installed, as this may cause fire or explosion.
- Do not use batteries that appear damaged, swollen, or compromised in any way (e.g., leaking, emitting odors, dented, corroded, rusted, cracked, melted, or scratched).
- Do not attempt to charge non-rechargeable (primary) batteries. Charging them may generate gas and/or heat internally, leading to leakage, venting, explosion, fire, or personal injury.
- Remove exhausted batteries immediately from the equipment and dispose of them properly. Leaving discharged batteries in the device for long periods may cause electrolyte leakage, damaging the device or causing personal injury.
- Remove batteries from equipment if it will not be used for an extended period, unless for emergency purposes.
- Remove batteries immediately from malfunctioning equipment or equipment expected to remain unused for a long period (e.g., camcorders, digital cameras, photo flashes). Partially or fully discharged batteries are more prone to leakage than unused ones.
- Keep the camera and batteries out of reach of children.
- Do not ingest or swallow batteries. Ingestion may cause severe internal burns or damage. Seek immediate medical attention if ingestion is suspected.
- Keep the power port dry, clean, and free of debris.
- Always follow local safety laws and regulations when using the camera.

Hereby, REOLINK INNOVATION LIMITED declares that this device is in compliance with Cyber Security (Security Standards for Smart Devices) Rules 2025. For the Statement of Compliance, visit the Web site <https://reolink.com/product-compliance/>

Limited Warranty

This product comes with a 2-year limited warranty that is valid only if purchased from Reolink Official Store or a Reolink authorized reseller. Learn more: <https://reolink.com/warranty-and-return/>.

NOTE: We hope that you enjoy the new purchase. But if you are not satisfied with the product and plan to return, we strongly suggest that you reset the camera to factory default settings and take out the inserted SD card before returning.

Terms and Privacy

Use of the product is subject to your agreement to the Terms of Service and Privacy Policy at reolink.com

Technical Support

If you need any technical help, please visit our official support site and contact our support team before returning the products, <https://support.reolink.com>.

09 Legal Disclaimer

To the maximum extent permitted by applicable law, this document and the product described, with its hardware, software, firmware, and services, are delivered on an "as-is" and "as-available" basis, with all faults and without warranty of any kind. Reolink disclaims all warranties, express or implied, including but not limited to, warranties of merchantability, satisfactory quality, fitness for a particular purpose, accuracy, and non-infringement of third-party rights. In no event will Reolink, its directors, officers, employees, or agents be liable to you for any special, consequential, incidental or indirect damages, including but not limited to damages for loss of business profits, business interruption, or loss of data or documentation, in connection with the use of this product, even if Reolink has been advised of the possibility of such damages.

To the extent permitted by applicable law, your use of the Reolink products and services is at your sole risk and you assume all risks associated with internet access. Reolink does not take any responsibilities for abnormal operation, privacy leakage or other damages resulting from cyber attacks, hacker attacks, virus inspections, or other internet security risks. However, Reolink will provide timely technical support if required.

The laws and regulations related to this product vary by jurisdiction. Please check all relevant laws and regulations in your jurisdiction before using this product to ensure that your use conforms to the applicable law and regulation. During the use of the product, you must comply with relevant local laws and regulations. Reolink is not

Terms of Service

By using the Product Software that is embedded on the Reolink product, you agree to the terms&conditions between you and Reolink. Learn more: <https://reolink.com/terms-conditions/>

Trademarks Acknowledgement

"Reolink" and other Reolink's trademarks and logos are the properties of Reolink. Other trademarks and logos mentioned are the properties of their respective owners.

responsible for any illegal or improper use and its consequences. Reolink is not liable in the event that this product is used with illegitimate purposes, such as third-party rights infringement, medical treatment, safety equipment, or other situations where the product failure could lead to death or personal injury, or for weapons of mass destruction, chemical and biological weapons, nuclear explosion, and any unsafe nuclear energy uses or anti-humanity purposes. In the event of any conflicts between this manual and the applicable law, the latter prevails.

10 Notification of Compliance

FCC Statement

This device complies with Part 15 of the FCC Rules. Operation is subject to the following two conditions:
(1) This device may not cause harmful interference, and
(2) This device must accept any interference received, including interference that may cause undesired operation. Changes or modifications not expressly approved by the party responsible for compliance could void the user's authority to operate the equipment. This equipment has been tested and found to comply with the limits for a Class B digital device, pursuant to Part 15 of the FCC Rules. These limits are designed to provide reasonable protection against harmful interference in a residential installation. This equipment generates uses and can radiate radio frequency energy and, if not installed and used in accordance with the instructions, may cause

REOLINK INNOVATION LIMITED
FLAT/RM 705 7/F FA YUEN COMMERCIAL BUILDING 75-77 FA YUEN
STREET MONG KOK KL HONG KONG