

# Floor Troughs

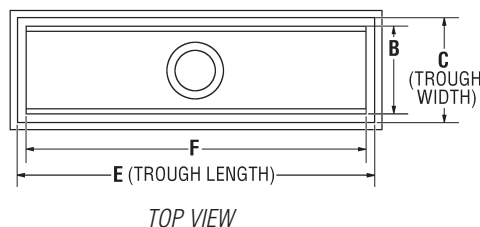
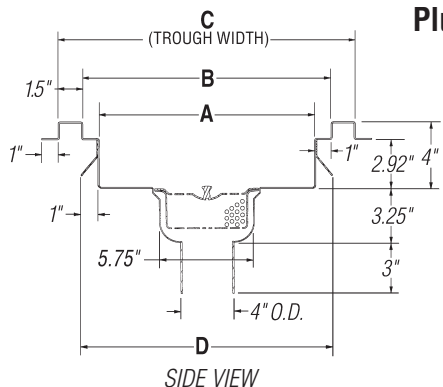
## INSTALLATION INSTRUCTIONS

### CAUTION

INSPECT CONTENTS IMMEDIATELY AND FILE CLAIM WITH DELIVERING CARRIER FOR ANY DAMAGE.  
**SAVE YOUR BOX AND ALL PACKING MATERIALS.**  
YOU ARE RESPONSIBLE FOR DAMAGE TO YOUR UNIT IF RETURNED IMPROPERLY PACKED.



### Plumbing Rough-ins

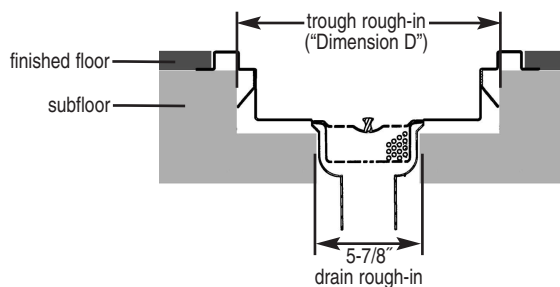


(see chart below for dimensions A through F)

12" (305mm)-WIDE TROUGHS dimension A: 7" (178mm) dimension B: 9" (229mm) dimension C: 12" (305mm) dimension D: 9.25" (232mm) model #	15" (381mm)-WIDE TROUGHS dimension A: 10" (254mm) dimension B: 12" (305mm) dimension C: 15" (381mm) dimension D: 12.25" (311mm) model #	18" (457mm)-WIDE TROUGHS dimension A: 13" (330mm) dimension B: 15" (381mm) dimension C: 18" (457mm) dimension D: 15.25" (387mm) model #	24" (610mm)-WIDE TROUGHS dimension A: 19" (483mm) dimension B: 21" (533mm) dimension C: 24" (610mm) dimension D: 21.25" (540mm) model #	TROUGH LENGTHS		dimension F	
				dimension E	dimension F	in.	mm
FT-1218-FG	n/a	n/a	n/a	18"	457	15"	381
FT-1224-FG	FT-1524-FG	FT-1824-FG	FT-2424-FG	24"	610	21"	533
FT-1230-FG	FT-1530-FG	FT-1830-FG	FT-2430-FG	30"	762	27"	686
FT-1236-FG	FT-1536-FG	FT-1836-FG	FT-2436-FG	36"	914	33"	838
FT-1248-FG	FT-1548-FG	FT-1848-FG	FT-2448-FG	48"	1219	45"	1143
FT-1260-FG	FT-1560-FG	FT-1860-FG	FT-2460-FG	60"	1524	57"	1448
FT-1272-FG	FT-1572-FG	FT-1872-FG	FT-2472-FG	72"	1829	69"	1753
FT-1284-FG	FT-1584-FG	FT-1884-FG	FT-2484-FG	84"	2134	81"	2057
FT-1296-FG	FT-1596-FG	FT-1896-FG	FT-2496-FG	96"	2438	93"	2362
FT-12120-FG	FT-15120-FG	FT-18120-FG	FT-24120-FG	120"	3048	117"	2972

The above chart indicates troughs with fiberglass grating. For troughs with ADA-approved wide "T" Bar fiberglass grating, add suffix "-ADA". Example: FT1224-FG-ADA  
For troughs with stainless steel grating, replace suffix "-FG" with "-SG". Example: FT1224-SG

- Size of rough-in hole for trough should be as follows:  
Width = "Dimension D"  
Length = "Dimension E"  
Depth = 4 1/4"
- Size of rough-in hole for drain should be 5 7/8" diameter.  
Depth, to accommodate plumbing, may vary.
- Place trough in hole.
- Lay finished floor so that it overlaps outer flange on all four sides of trough.
- Lay grating inside trough accordingly.



(End)

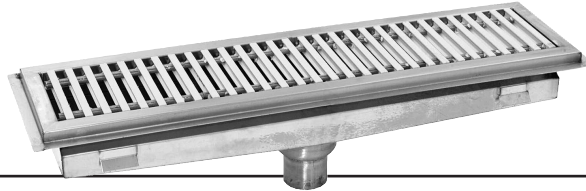
EG10094 Revised 01/15

# Anti-Splash Floor Troughs

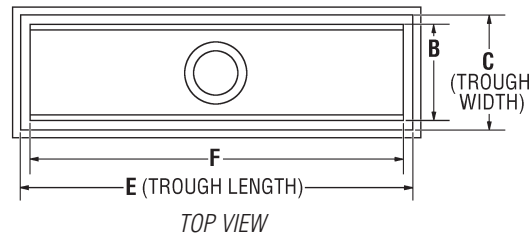
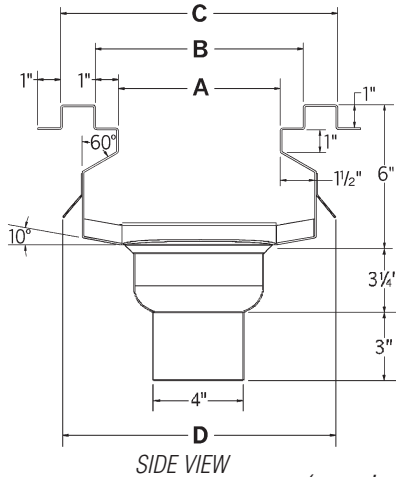
## INSTALLATION INSTRUCTIONS

### CAUTION

INSPECT CONTENTS IMMEDIATELY AND FILE CLAIM WITH DELIVERING CARRIER FOR ANY DAMAGE.  
**SAVE YOUR BOX AND ALL PACKING MATERIALS.**  
 YOU ARE RESPONSIBLE FOR DAMAGE TO YOUR UNIT IF RETURNED IMPROPERLY PACKED.



### Plumbing Rough-ins

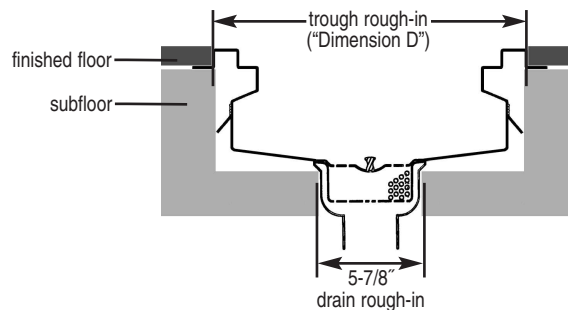


(see chart below for dimensions A through F)

12" (305mm)-WIDE TROUGHS		15" (381mm)-WIDE TROUGHS		18" (457mm)-WIDE TROUGHS		24" (610mm)-WIDE TROUGHS		TROUGH LENGTHS	
dimension A: 7" (178mm)		dimension A: 10" (254mm)		dimension A: 13" (330mm)		dimension A: 19" (483mm)		dimension E	dimension F
dimension B: 9" (229mm)		dimension B: 12" (305mm)		dimension B: 15" (381mm)		dimension B: 21" (533mm)			
dimension C: 12" (305mm)		dimension C: 15" (381mm)		dimension C: 18" (457mm)		dimension C: 24" (610mm)		in.	mm
dimension D: 11.25" (286mm)		dimension D: 14.25" (362mm)		dimension D: 17.25" (438mm)		dimension D: 23.25" (591mm)			
model #	model #	model #	model #	model #	model #	model #	model #	in.	mm
ASFT-1218-FG	n/a	n/a	n/a	n/a	n/a	n/a	n/a	18"	457
ASFT-1224-FG	ASFT-1524-FG	ASFT-1824-FG	ASFT-2424-FG	24"	610	15"	381	24"	610
ASFT-1230-FG	ASFT-1530-FG	ASFT-1830-FG	ASFT-2430-FG	30"	762	21"	533	30"	762
ASFT-1236-FG	ASFT-1536-FG	ASFT-1836-FG	ASFT-2436-FG	36"	914	33"	838	36"	914
ASFT-1248-FG	ASFT-1548-FG	ASFT-1848-FG	ASFT-2448-FG	48"	1219	45"	1143	48"	1219
ASFT-1260-FG	ASFT-1560-FG	ASFT-1860-FG	ASFT-2460-FG	60"	1524	57"	1448	60"	1524
ASFT-1272-FG	ASFT-1572-FG	ASFT-1872-FG	ASFT-2472-FG	72"	1829	69"	1753	72"	1829
ASFT-1284-FG	ASFT-1584-FG	ASFT-1884-FG	ASFT-2484-FG	84"	2134	81"	2057	84"	2134
ASFT-1296-FG	ASFT-1596-FG	ASFT-1896-FG	ASFT-2496-FG	96"	2438	93"	2362	96"	2438
ASFT-12120-FG	ASFT-15120-FG	ASFT-18120-FG	ASFT-24120-FG	120"	3048	117"	2972	120"	3048

The above chart indicates troughs with fiberglass grating. For troughs with ADA-approved wide "T" Bar fiberglass grating, add suffix "-ADA". Example: ASFT1224-FG-ADA  
 For troughs with stainless steel grating, replace suffix "-FG" with "-SG". Example: ASFT1224-SG

- Size of rough-in hole for trough should be as follows:  
 Width = "Dimension D"  
 Length = "Dimension E"  
 Depth = 6 1/4"
- Size of rough-in hole for drain should be 5 7/8" diameter.  
 Depth, to accommodate plumbing, may vary.
- Place trough in hole.
- Lay finished floor so that it overlaps outer flange on all four sides of trough.
- Lay grating inside trough accordingly.



• 100 Industrial Boulevard, Clayton, Delaware 19938-8903 U.S.A. • www.eaglegrp.com  
 • Phone: 302/653-3000 • (Foodservice) 800/441-8440 • (MHC/Retail) 800/637-5100  
 • Fax: 302/653-2065