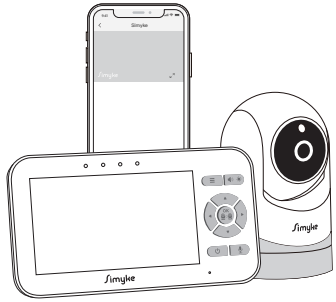


User Manual

BME40P Baby Monitor



BME40P

Specifications

System General	
Model Number:	BME40P
RF Frequency:	2400 ~ 2483.5MHz
Optical Camera Channels:	4
Operating Temperature Range:	0°C - 50°C
Origin:	Made in China
Wireless Communication:	WiFi/FHSS
TX-RX Transmission Range:	1200ft

Camera Unit

Input Voltage:	5V
Operating Power:	<800mA
IR/Night Vision:	YES
Picture Sensor:	GC1084
Operating Temperature:	0°C - 50°C
Power Adapter:	5V,1A
Charging Cable:	80 in
Exposure Control:	Auto
White Balance Control:	Auto
Vertical Turning Angle:	Tilt down 90°
Horizontal Turning Angle:	Manual 330°
Other Special Features:	Built in Microphone/speaker
Camera Dimensions (L x W x H):	2.76x2.76x4.33in

Table of Contents

- Safety Instructions Overview
- What's in the Box
- Product Overview
- Specifications
- Menu Options
- Getting Started
- Charging and Powering the Baby Monitor
- Placement of the Baby Monitor
- Using the BME40P Baby Monitor
- Work with Plug&Play Display
- Registration (Pairing)
- OSD Mode Operation
- Menu Operation
- Work with Smartphone
- Customer Service
- Warranty policy
- Contact Us
- Trouble Shooting

01
02
02
03
04
05
06
06
07
07
09
09
09
09
11
17
18
18
18
18
18

Safety Instructions

WARNING:

- **STRANGULATION HAZARD:** Children have STRANGLED in cords. Keep this cord out of the reach of children (more than 3 ft (1m) away).
- **NEVER PLACE THE CAMERA OR CORD IN OR NEAR CRIB OR PLAYPEN.** Secure the cord at least 3 ft away from crib or playpen.
- **CHOKING HAZARD:** This product contains small parts which may cause choking.
- **SHOCK WARNING:** To prevent electric shock, NEVER use the transmitter or receiver near water, including near a bathtub, sink, laundry tub, wet basement, etc.
- **CAUTION:** Only insert a battery pack of the same type. Risk of explosion if battery is replaced with an incorrect type.
- Use only the DC adapters provided.
- Adult assembly is required. Keep small parts away from children when you are assembling.
- This product is not a toy. Do not allow children to play with it.
- This product is NOT intended to replace proper adult supervision of children.
- You MUST check your child's activity regularly, as this product will not alert parents to silent activities of a child.
- Before using this product, read and follow all instructions and warnings contained in this booklet.
- Do not allow water damage to the camera unit, monitor unit, power adapter, or charging cable which cause overheating of the charging components.
- Do not use unofficial third party charging cables to charge the device. This may result in overheating of the charging port. Only use the charging cables provided in the box.
- Do not use unofficial third party power adapters, especially high voltage adapters. This may result in overheating of the cable and/or charging port. Only use the adapter provided in the box.



FCC Statements

- These devices, including Baby Camera and Baby Monitor, comply with Part 15 of the FCC rules. Operation is subject to the following two conditions:
 - These devices may not cause harmful interference.
 - These devices must accept any interference received, including interference that may cause undesired operation.
- This equipment has been tested and found to comply with the limits for a Class B digital device pursuant to Part 15 of the FCC Rules. These limits are designed to provide reasonable protection against harmful interference in a residential installation. This equipment generates, uses, and can radiate radio frequency energy and, if not installed and used in accordance with the instructions, may cause harmful interference to radio communications. However there is no guarantee that interference will not occur in a particular installation. If this equipment does cause harmful interference to radio or television reception, which can be determined by turning the equipment off and on, the user is encouraged to try to correct the interference by one or more of the following measures.

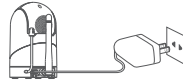
01

Menu Options Overview (Lower Screen Bar)

Icon	Description	Option
	Screen Brightness	☀ ☀ ☀ ☀ ☀
	Alarm Volume	ON / OFF
	Lullaby	#1 #2 #3 #4 #5 # = #x
	Camera Options	<ul style="list-style-type: none"> Delete a camera Add (Pair) a camera View a camera Scan all cameras Camera speaker volume
	Alarm Setting	2h / 4h / 6h / OFF
	Temperature Unit	°F / °C
	VOX Sensitivity	🔊 🔊 🔊 🔊 🔊 OFF
	Screen speaker out	🔊 🔊 🔊 🔊 🔊 🔊 🔊

Getting Started

Charging and Powering in the Baby Monitor



Turn on the Camera Unit

Only use the USB-C adapter included in this package. Use the provided USB-C adapter to connect the wall outlet with the camera unit. Once the adapter is connected, the unit will turn on automatically and the power LED will light up.

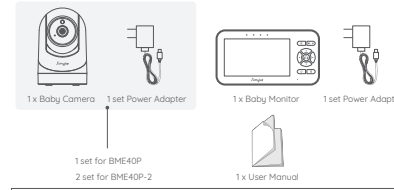
NOTE: Only use the enclosed camera Power Adapter.

06

- Reorient or relocate the receiving antenna.
 - Increase the distance between the equipment and receiver.
 - Connect the equipment into an outlet on a circuit different from that to which the receiver is connected.
 - Consult an experienced radio / TV technician for help.
 - Warn user: The Federal Communications Commission warns the users that changes or modifications of the unit not expressly approved by the party responsible for compliance could void the user's authority to operate the equipment.
 - **BME40P TX:** This equipment complies with FCC radiation exposure limits set forth for an uncontrolled environment. This equipment should be installed and operated with minimum distance 20cm between the radiator & your body.
 - **A warning that batteries (battery pack or batteries installed) shall not be exposed to excessive heat such as sunshine, fire or the light.**
 - 1) Replacement of a battery with an incorrect type that can defeat a safeguard;
 - 2) Disposal of a battery into fire or a hot oven; mechanically crushing or cutting of a battery that can result in an explosion;
 - 3) Leaving a battery in an extremely high temperature surrounding environment that can result in an explosion or the leakage of flammable liquid or gas;
 - 4) A battery subjected to extremely low air or pressure that may result in an explosion or the leakage of flammable liquid or gas.
- Battery Capacity: 3.7V 2500mAh 9.25Wh
Type: Li-ion Battery

Overview

What's in the Box

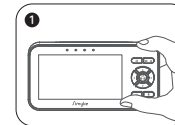


NOTE: Power adapter varies by region.

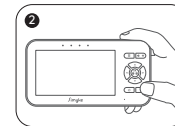
02

Turn on the Monitor Unit

- Only use the USB-C adapter included in this package.
 - The monitor unit is supplied with a built-in rechargeable Li-ion battery.
- We suggest to connect the monitor to the adapter plugged into the mains whenever possible, in order to keep the battery charged.



Press and hold the power button on the lower right of the keypad.



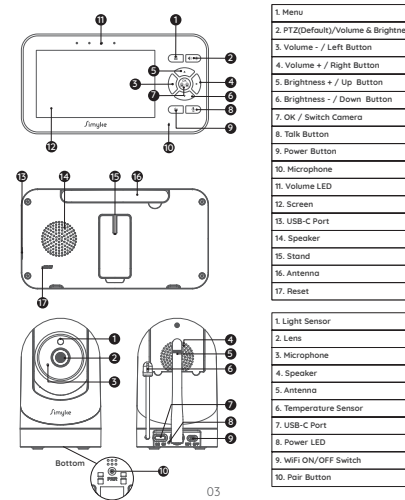
Once monitor unit turned on, the power LED will light up and the image will display on the LCD screen.

Placement of the Baby Monitor

This camera can be placed on a tabletop or on the wall. Place the baby monitor in an airy place. Do not place on soft quilts or blankets or in the corners of cupboards, shelves, etc.

07

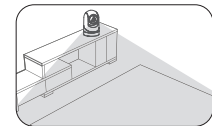
Product Overview



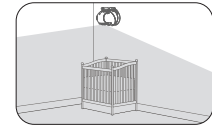
1. Menu
2. PTZ(Default)/Volume & Brightness
3. Volume - / Left Button
4. Volume + / Right Button
5. Brightness + / Up Button
6. Brightness - / Down Button
7. OK / Switch Camera
8. Talk Button
9. Power Button
10. Microphone
11. Volume LED
12. Screen
13. USB-C Port
14. Speaker
15. Stand
16. Antenna
17. Reset

1. Light Sensor
2. Lens
3. Microphone
4. Speaker
5. Antenna
6. Temperature Sensor
7. USB-C Port
8. Power LED
9. WIFI ON/OFF Switch
10. Pair Button

- Place the baby monitor away from heat sources such as radiators, chimneys, cookers and direct sunlight.
- Place the camera unit away from TV sets, microwave oven and radios. The intense radio signals generated by these elements could cause noise or even deteriorate sounds and images which appear on the monitor. If this occurs, move the camera to another location.



Place the camera within 15 feet of the area being monitored for best picture result.



Baby monitors and cameras with power cords should never be hung on or near the crib as it can cause strangulation hazard. Power cords should be kept no less than 3 ft away from the baby's reach at all times.

08

04

05



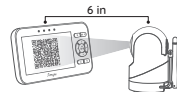
Using the BME40P Baby Monitor

Work with Plug&Play Display

Registration (Pairing)

The Camera Unit is pre-registered to your monitor unit. You do not need to register it again unless the Camera Unit loses its pairing with the monitor unit. To re-register your Camera Unit, or register a new Camera Unit, follow the procedure below:

- 1 Press the **MENU** button of the monitor unit and the menu bar will pop up.
- 2 Press the **LEFT** button or **RIGHT** button until the **cam** icon is highlighted.
- 3 Press the **UP** button or **DOWN** button until the **add** icon is highlighted and press the **OK** button.
- 4 Press the **UP** button or **DOWN** button to select the desired cam and press the **OK** button to create the registration (pairing) QR code.
- 5 Turn on the camera, slide the switch to the "WiFi" position, press and hold the **PAIR** button on the bottom of the device for **3** seconds.
- 6 Please scan QR code and finish the registration (pairing).



NOTE: If a particular Camera Unit was previously registered with another monitor unit, registering with the current monitor unit will overwrite the old registration on the camera Unit.

09

- 4 **add** / **del** / **view** / **scan** will show, press the **UP** button or **DOWN** button to select the desired camera unit to view.

Scan Camera

This function automatically cycles through your paired camera channels to display each for 30 seconds. This function is only applicable if you have more than 1 camera unit.

- 1 Press the **MENU** button and the menu bar will show.
- 2 Press the **LEFT** button or **RIGHT** button until the **cam** icon is highlighted and the camera **add** / camera delete / camera view / camera scan / camera speaker out menu will show.
- 3 Press the **UP** button or **DOWN** button to select the **scan** icon, and press the **OK** button to confirm.
- 4 The screen will display the video from different paired cameras in a loop of **add** / **del** / **view** / **scan**, changing every 30 seconds.

NOTE: When in the scan mode, the monitor unit will stop scanning and alert you if one of the camera unit is out of range or is not powered on.

14

OSD (On Screen Display) Mode Operation

Screen Off/Power Off

- Press the **power** button to get into the SLEEP MODE.
- Long press the **power** button to turn on / off the screen.

Volume Adjustment

- Press the **Volume&Brightness** function key **Vol/B**, and the keypad indicator will be displayed on the screen.



- Press the **Right** button to increase the volume.
- Press the **Left** button to decrease the volume.

Brightness Adjustment

- Press the **Volume&Brightness** function key **Vol/B**, and the keypad indicator will be displayed on the screen.



- Press the **UP** button to increase the brightness.
- Press the **DOWN** button to decrease the brightness.

10

Set Camera Speaker Out Volume

This setting applies to following features on camera side:

Two way talk, lullaby, sound indications for camera status.

- 1 Press the **MENU** button and the menu bar will show.
- 2 Press the **LEFT** button or **RIGHT** button until the **cam** icon is highlighted and the camera **add** / camera delete / camera view / camera scan / camera speaker out menu will show.
- 3 Press the **UP** button or **DOWN** button to select the **volume** setting icon, and press the **OK** button to confirm.
- 4 Volume high / Medium / Low will show, press the **UP** button or **DOWN** button to select the desired level, and press the **OK** button to confirm.

15

Talk to Baby

To talk, press and hold the **TALK** button. Release the button when you have finished talking to and want to listen from the baby's room again. Bear in mind that you will not be able to listen to your baby while talking to the monitor. You will have to stop pressing this button before listening to your baby. When you are using this function, the talk icon will be displayed on the screen.

Infrared Night Vision (Automatic)

The infrared night vision function allows the camera to pick up images of your baby or the monitored area in dark or low light conditions. When using the night vision mode, only black and white images will be displayed on the monitor. (When the camera is in night vision mode, the night vision icon will be displayed on the top of the screen).

Menu Operation

Lullaby Setting

- 1 Press the **MENU** button and the menu will show.
- 2 Press the **LEFT** button or **RIGHT** button until the **lullaby** icon is highlighted.
- 3 Press the **UP** button or **DOWN** button to select one of the 5 available lullabies, single or sequential playing, or stop playing.
- 4 Press the **MENU** button to Exit.

NOTE:

- Once the lullaby starts playing on, the lullaby icon will display on the top of the screen.
- Lullaby sequential playing function will play all the lullabies each time.

11

Warning Volume Setting

This setting turns on/off the audio 'beep' sound from the monitor unit to alert you when the unit is low on battery or out of range.

- 1 Press the **MENU** button and the menu bar will show.
- 2 Press the **LEFT** button or **RIGHT** button until the **warning** volume icon is highlighted.
- 3 Press the **UP** button or **DOWN** button to select ON / OFF.

Temperature Unit Setting

- 1 Press the **MENU** button and the menu bar will show.
- 2 Press the **LEFT** button or **RIGHT** button until the **tempera** icon is highlighted.
- 3 Press the **UP** button or **DOWN** button to select between C or F, and press the **OK** button to confirm.

LCD Screen Brightness Setting

- 1 Press the **MENU** button and the menu bar will show.
- 2 Press the **LEFT** button or **RIGHT** button until the **warning** brightness icon is highlighted.
- 3 Press the **UP** button or **DOWN** button to select the desired brightness level.

LCD Screen Speaker Volume Setting

- 1 Press the **MENU** button and the menu bar will show.
- 2 Press the **LEFT** button or **RIGHT** button until the **warning** speaker volume icon is highlighted.
- 3 Press the **UP** button or **DOWN** button to select the desired volume level.

16

Alarm Setting

- 1 Press the **MENU** button and the menu bar will pop up.
- 2 Press the **LEFT** button or **RIGHT** button until the **alarm** icon is highlighted.
- 3 Press the **UP** button or **DOWN** button to select the desired time from 2h, 4h, 6h and OFF. (The default setting is OFF).
- 4 Press the **OK** button to confirm.

VOX Setting

This mode allows you to control the sound activation of your baby monitor. If there is no sound around the camera within 5min, it will stop the transmission. The monitor screen will turn off when the camera is not transmitting. When the camera detects the sound exceeding the sensitivity level, it will start transmitting the signal to the monitor and alert the user. To change the VOX level, please follow the instructions below:

- 1 Press the **MENU** button and the menu will show.
- 2 Press the **LEFT** button or **RIGHT** button until the **vox** icon is highlighted, then press the **UP** button or **DOWN** button to select desired level. Press the **OK** button to confirm.
- 3 Press the **MENU** button to exit.

NOTE:

- **1** is low sensitivity level.
- **2** is medium sensitivity level.
- **3** is high sensitivity level.
- VOX Mode default: OFF **OFF**

12

Work with Smartphone

1. Download & Register

Download the App and follow the onscreen instructions to complete your initial registration



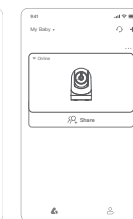
2. Pair Device

Tap "Pair Device" to pair your phone with Simyke baby monitor



3. Ready to begin

Now start your journey with Simyke camera!



17

Camera Control

Add (Pair) a Camera

Please refer to the instructions for camera pairing on Page 9.

Delete a Camera

- 1 Press the **MENU** button and the menu bar will show.
- 2 Press the **LEFT** button or **RIGHT** button until the **cam** icon is highlighted and the camera **add** / camera delete / camera view / camera scan / camera speaker out menu will show.
- 3 Press the **UP** button or **DOWN** button to select the **del** icon, and press the **OK** button to confirm.
- 4 **add** / **del** / **view** / **scan** will show, press the **UP** button or **DOWN** button to select the desired cam, and press the **OK** button to delete that registration on your monitor unit.

NOTE: A cam channel needs to be deleted before pairing to a new camera unit.

View a Camera

- 1 Press the **MENU** button and the menu bar will show.
- 2 Press the **LEFT** button or **RIGHT** button until the **cam** icon is highlighted and the camera **add** / camera delete / camera view / camera scan / camera speaker out menu will show.
- 3 Press the **UP** button or **DOWN** button to select the **view** icon, and press the **OK** button to confirm.

13

Customer Service

Warranty policy

We guarantee 12 months warranty and professional after-sale service within 24 hours.

Contact Us

If you have any questions, please feel free to contact us via our official email address: info@simyke.net



Trouble Shooting

No reception on The Monitor	<ul style="list-style-type: none"> • The power adapters may not be properly connected. • Confirm that the camera and monitor are ON. • Camera may be far away from the monitor. • Camera and monitor may not be properly paired, follow Registration (Pairing) instructions.
Interference or Poor Reception	<ul style="list-style-type: none"> • Move the monitor close to the camera. • The camera or monitor may be placed too close to many metal objects. • Other electronic devices may be interfering with the signal. • The battery power may be too low
Audio Feedback (High Pitched Noise)	<ul style="list-style-type: none"> • The camera and monitor may be placed too closed. • The volume on the monitor may be set too high.
Frozen Picture on Screen	<ul style="list-style-type: none"> • Repower the baby unit (plug out the adapter, then plug it into the socket again). • Press the RESET key at the back of parent unit.

18