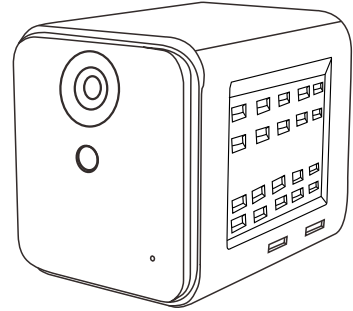




C1 User Manual English



service@javis-cam.com

Thank you for choosing our product.
Customer service email:
service@javis-cam.com

Notice

1. Most importantly: only use this camera where your phone has a good signal. Don't need WiFi.
2. The radar used for detecting motions can work through window and glass. It will capture motions happened in 15 meters (50 ft).
3. More detected motions cost more power and data.
4. Please don't place the camera too close to the window unless you don't need good night vision. Minimum distance from window: 1 meter (3 ft).
5. No waterproof. Strong ultraviolet light from the daylight might cause the dark color become purple.
6. Adhesive for the auxiliary role of limited time use, long-term use is recommended to screw fixed

APP Download

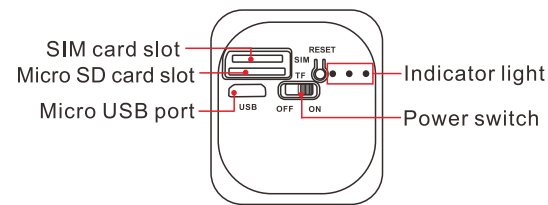
Please scan the QR code below to download UBox APP for this camera.
Or search **UBox** in App Store or Google Play.



Download App(IOS&android)

After APP installed, please register and login into your own UBox account.

Buttons and card slots



Indicator Light

Blue & red light both on	Booting up
Blue light solid on	Ready for QR code scan, or in live view
Blue light flashing	Searching for signal
Red light flashing	Recording
Green light on	Charging
Green light off	Not charging, or fully charged

SIM card & data

The SIM card provided with this camera has 100M data for free.

You can recharge the card in the APP after Internet connection. If you want to use your own SIM card instead, please email us the camera's UID. So we can pay the mobile server provider to release this exclusive authority to your camera.

Storage method

Using memory card:

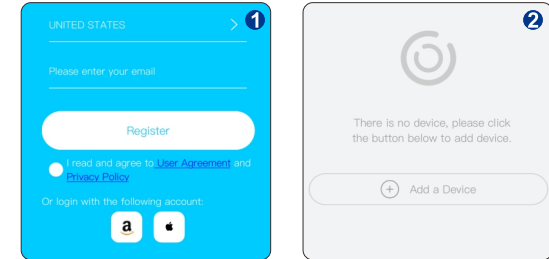
1. Please format it before first-time use. Plug in the memory card when the camera is turned OFF.
2. After a 4G Network connection & setup through APP, the camera can still work automatically even if disconnected from the 4G Network. It will keep recording and save videos on the card.

Using cloud storage:

Only motion-detection videos will be saved on cloud storage.

4G Network connection

Instruction videos, see the last page.



1. Open the UBox APP. Register for your own account.
2. Click "Add a device". Then select "Set up 4G Device".



3. Turn on your camera and wait for a minute. If the blue light keeps flashing, please move your camera to another place where your phone has better signal. Click "Next" when the blue light is solid on.

4. After scanning the code, if the APP says the camera need to be reset after, please reset it by pressing on the reset button for 5 seconds. And try the above process again.



5. Use your mobile phone to scan the QR code on the back of your camera.
6. The system will handle the connection. Please wait for the response in APP. Set a name for the camera and it's all done!

Installation

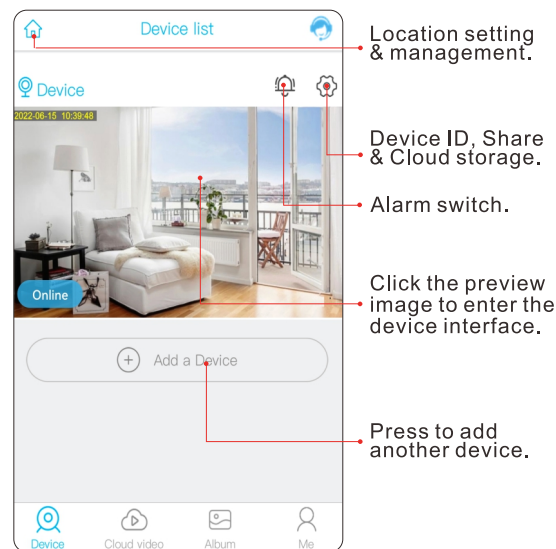
The 3M tape on the back of the holder is not strong enough to keep the camera from failing on rough walls, wooden surface and windows.

If you already found a good spot for your camera, please use the screws in the box to mount your camera tightly.

You can take the camera out of the holder when it needs a charge.

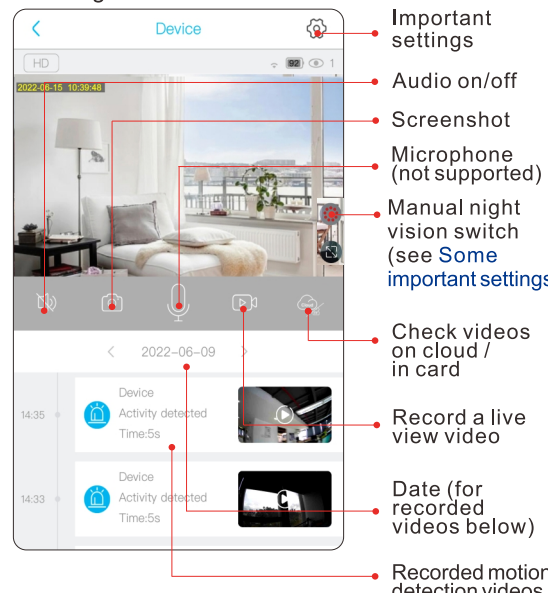
Device list interface

In this page, you can see all the devices you own.



Device interface

You can see the live view of your camera, watch playback of the recorded motion detection videos and make important settings.



Some important settings

Motion detection: In "Detection sensitivity". If turned on, camera will record when detecting any motion.

Video length: In "Recording time". Add extra video length for every motion detection video. Set to "Fulltime record" for continuous video recording.

Night vision: In "Scene mode". "Normal" for automatic night vision. "Night vision mode" for manual control in the live view interface. (see Device interface)

Automatic reconnection: If the camera lost the signal, it will try to reconnect with the internet automatically. In "Retry time", you can set the time gap between each retry attempt if the camera has no signal.

Path to top up data

In the "Device list" interface, select your 4G camera, click the gear icon on the top right. Then, select "4G data service". You can check the packages and recharge the data here.

www.javis-cam.com
service@javis-cam.com

User guide videos
www.youtube.com/@JAVISCAM



EC	REP	eVatmaster Consulting GmbH Bettinastr.30 60325 Frankfurt am Main, Germany
UK	REP	EVATOST CONSULTING LTD Suite 11 First Floor, Moy Road Business Centre, Taffs Well, Cardiff, Wales, CF15 7QR

Manufacturer: Shenzhen Huang Wei Technology Co., Ltd
Address: 401,2105 Longgang Avenue, Henggang Street,
Longgang District, Shenzhen city, Guangdong
Province, China



FCC ID: 2A5FR-H5 Made in China