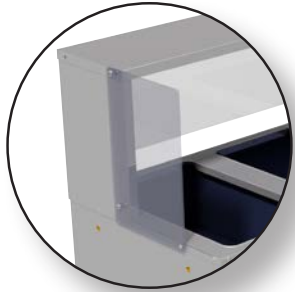


OPTIONAL ACCESSORIES



Acrylic Side Panels for Serving Shelf

Add side panels to meet
additional NSF requirements
(1 panel per end)

TSP-1 (One End)

TSP-2 (Two Ends)

**For Further Assistance
Contact Customer Service at:
800-645-3166
or
customer@advancetabco.com**



Edgewood, New York 11717-8380

©ADVANCE TABCO MAY 2015



Installation Instructions For TSS SERIES SINGLE SIDED CAFETERIA SHELF



**CHECK FOR CONCEALED DAMAGE
FILE CLAIM WITH DELIVERING FREIGHT CARRIER**

Contents:

- (4) 1/4" - 20 x 1/2" PHP Machine Screws
- (6) #10 x 1/2" - PHP Sheet Metal Screws
- (10) Dome Cap Nuts
- (3) Glass Clips

Tools Required:

- Philip's Head Screw Driver
- Pliers

STEP 1: Remove existing screws on the hot food table side and line up the shelf sides with these holes. Mount the sides using the existing sheet metal screws **(E)**. See **Figure 1**.

STEP 2: Slide the plexiglass **(B)** with stainless steel edging facing down into the slots in the front of the side panels. See Figure 1.

STEP 3: Place the stainless steel top **(C)** down on to the supports and secure the top to the sides using the insert screws **(F)**. Make sure that the threaded studs on the underside of the top (C) are on the same side as the plexiglass **(B)**. See **Figure 2**.

STEP 4: Attach the two glass clips **(D)** using the dome cap screws **(G)** to the underside of the top, this will hold the plexiglass in place. See **Figure 2**.

