

Front

SHORTCUT FUNCTIONS

Key	Fn + on iOS	Fn + on Android	Fn + on Windows	Fn Windows w/o Fn
	Home	Home	ESC	ESC
	Brightness Down	Return	F1	F1
	Brightness Up	Email	F2	F2
	Virtual keyboard	Menu	F3	F3
	Screen Capture	Media Player	F4	F4
	Search	Search	Search	F5
	Language Exchange	Language exchange	Language exchange	F6
	Previous track	Previous track	Previous track	F7
	Play / Pause	Play / pause	Play / pause	F8
	Next Track	Next track	Next track	F9
	Mute	Mute	Mute	F10
	Volume down	Volume down	Volume down	F11
	Volume up	Volume up	Volume up	F12
	Screen lock	Screen lock	Screen lock	Delete

SPECIFICATIONS

- Working Distance: 10 meters
- Bluetooth Version: 5.0
- Working Time: More than 40 hours
- Standby Time: More than 4380 hours
- Charging Time: 2 to 3 hours
- Weight: 680 grams
- Dimensions: 288 X 160 X 15 mm

SLEEP MODE

If not used for 10 minutes, the device will automatically go into sleep mode. To reconnect the keyboard, press any key and wait for 3 seconds, the keyboard will work again.

CHARGING

When the indicator light turns red and is twinkling, the keyboard needs to be charged.

- Plug in the charging cable in the Micro USB slot of keyboard.
- Plug USB cable into the slot of adapter or the USB port of the computer.
- While charging, LED light will be red. When the device is fully charged, the LED light will turn off.

SAFETY INSTRUCTIONS

WARNING: If Safety Instructions are not followed, it may cause fire, damage the device or electric shock

- Keep far from edge tools
- Keep far from microwave machines
- Do not Squeeze
- Do not bend
- Keep far from oil, chemical material or organic solvent

MAINTAINING INSTRUCTIONS

- If you are not using the keyboard, please turn it off to save the battery.
- To protect battery life, please charge keyboard when power is low.
- If using keyboard during charging, please use original cable provided in the packaging.

PRODUCT WARRANTY

XECH warrants that the product will be free from any manufacturing defects & takes responsibility in case the device fails to function for a period of one year from the date of the original invoice. The warranty period validity is also subject to the following conditions:

- The product must be registered on www.xech.com within 15 days from the date purchase.
- The product is not given to some external repair personnel.
- It is only valid in the Indian Subcontinent.
- If the device is not immersed in water. It also does not cover natural wear & tear or rough usage.
- If the instruction manual is not followed & the device is not used in an improper manner.
- If the device is not used for its stated functionality.
- If the device is not used by children below 3 years or someone incapable or using the device.

In case of any product related query or support, please reach out to our customer support team at support@xech.com and we will gladly assist you.

WARRANTY

Purchasing Date:

Invoice No:

Dealer Information:

XECH®

Double Channel BLUETOOTH KEYBOARD

USER MANUAL



Back

BUTTON DESCRIPTION

On/OFF
 Slide the switch to turn on or off the keyboard.

CH1 ⇌ CH2
 Slide the button to change the channels.

LED INDICATION

LED light on indicates Caps Lock is on for capital letters.

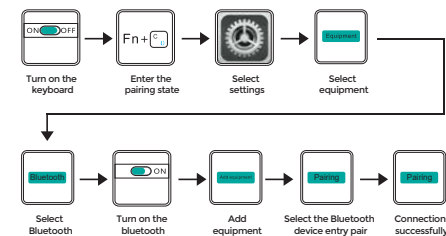
LED Indication for connection: When the device powers on, LED light blinks continuously. Press fn+C keys together for 2-3 seconds, LED light will blink slowly and device will be paired.

- When the Channel Switch button is on CH1, please slide the On/Off Switch button to On. Blue Indicator light will turn off. After 1 second, press + keys together for 2-3 seconds. The blue Indicator light indicates that the device is in pairing status by blinking once. When the keyboard is connected successfully, the blue indicator light will blink once in every 5 seconds.

- When the Channel Switch button is on CH2, please slide the On/Off Switch button to On. Blue Indicator light will turn off. After 1 second, press + keys together for 2-3 seconds. The blue Indicator light indicates that the device is in pairing status by blinking once. When the keyboard is connected successfully, the blue indicator light will blink once in every 5 seconds.

PAIR THE DEVICE

To pair the keyboard to your device, follow the steps given below:



- Turn on the keyboard, a Blue light will flicker. Press + together for 2-3 seconds and then the keyboard will be ready to pair
- In Bluetooth Menu of the device, you can see 'Xech DC Keyboard'. You can click on this to pair.
- During pairing, no password will be required. You will see a set of keys on the screen of the device once the device is ready to pair. You just need to press those keys on the keyboard. If paired successfully, the blue light will twinkle once in every 5 seconds.

COMPATIBLE WITH ANDROID AND WINDOWS SYSTEMS

After pairing, if your device is iOS system, please press

+

if Android system, please press +

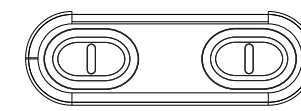
if Windows system, please press +

PLEASE NOTE

- As long as your devices have Bluetooth function, you can connect and use keyboard.
- You can connect a smartphone, tablet, laptop and computer using the same steps as explained previously.
- Automatic pairing will be done if keyboard is switched off and switched on again.
- To use function keys, you can use the fn key with all the keys that have same colour marking to use the particular function.

CHANNEL SWITCH FUNCTION

Xech DC Keyboard is a dual channel keyboard, it can work with two devices at the same time. Just switch the channel by sliding the button from CH1 to CH2 and vice versa. This will not result in any malfunctioning or disconnection of paired devices.



CH1 ⇌ CH2 On/OFF

- To connect the first device, the switch should be on CH1 position. Connect with 1st device using the steps explained earlier, then slide channel switch to the CH2 position to connect with 2nd device using the same steps again.
- While using device 1, you keep the switch on CH1 and for using device 2, you can slide switch to CH2.

PLEASE NOTE

Every time the Keyboard restarts, Android and Windows devices will be automatically reconnected within 3-5 seconds. iOS devices may need a little longer to connect, it is common.

The Xech DC Keyboard is a unique keyboard where three devices are interconnected at the same time. There are two channels for connecting two different devices like tablets, smartphones and computers via Bluetooth. The automatic connection and reconnection time of different devices varies from brand to brand, it is a common phenomenon.

VERSIONS SUPPORTED

- Android 3.0 or updated
- iOS 4.0 or updated.
- Windows XP, Windows 7 or updated