

MODEL: IM-101/101S

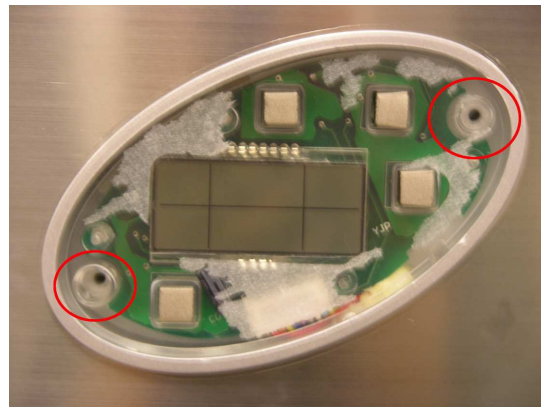
Instruction to Replace the Control Circuit Board:

1. Locate the Control Panel

Then, from the edge of the control panel peel off the control pad.



2. Once the control pad had been removed, remove the two screws as indicated.



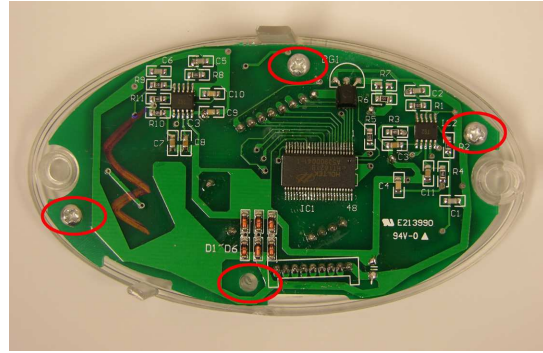
3. Unplug the control circuit board from the unit.



4.

After the removal of the control circuit board, remove the four screws as indicated and then replace the old with the new control circuit board.

Then, reinstall the new control circuit board by reversing the process.



5.

CAUTION:

When reinstalling the control circuit board, make sure the buttons are intact before continuing.

