

## FCC STATEMENT

This equipment has been tested and found to comply with the limits for a Class B digital device, pursuant to part 15 of the FCC Rules. These limits are designed to provide reasonable protection against harmful interference in a residential installation. This equipment generates, uses and can radiate radio frequency energy and, if not installed and used in accordance with the instructions, may cause harmful interference to radio communications. However, there is no guarantee that interference will not occur in a particular installation. If this equipment does cause harmful interference to radio or television reception, which can be determined by turning the equipment off and on, the user is encouraged to try to correct the interference by one or more of the following measures:

- Reorient or relocate the receiving antenna.
- Increase the separation between the equipment and receiver.
- Connect the equipment into an outlet on a circuit different from that to which the receiver is connected.
- Consult the dealer or an experienced radio/TV technician for help.

## SUPPORT

DISCOVER MORE  
[KitchenAid.com/pinch-of-help](https://KitchenAid.com/pinch-of-help)

PRODUCT QUESTIONS OR RETURNS  
1.800.541.6390 | [KitchenAid.com](https://KitchenAid.com)

1 YEAR LIMITED WARRANTY  
Visit [international.KitchenAid.com](https://international.KitchenAid.com)  
for warranty details.

MODEL NO. KTH11BM  
Smart Thermometer  
FCC ID: A5UTTIVNWM01

Rating: DC 5V 0.35A

Apple and the Apple logo are registered trademarks of Apple Inc. App Store is a service mark of Apple Inc. Google Play and the Google Play logo are trademarks of Google LLC.

®/™ ©2024 KitchenAid.  
All rights reserved. Printed in Vietnam.  
240153KP. W11733577.

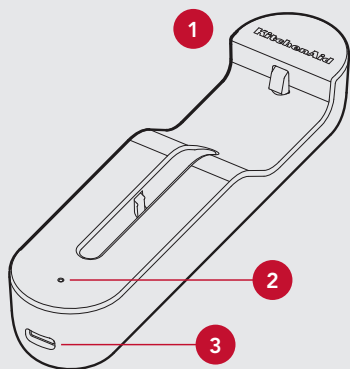
# KitchenAid®

## SMART THERMOMETER QUICK START GUIDE

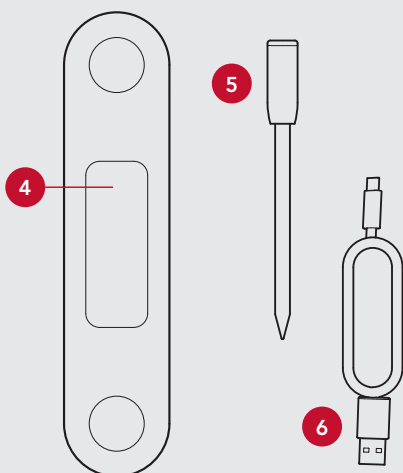


# Goodbye guesswork, hello everyday precision.

## WHAT'S INCLUDED



Dock Front



Dock Back

1. Dock
2. LED Status Light
3. USB C Connection Port
4. Magnetic Mounts
5. Thermometer Probe
6. USB Cable

## GETTING STARTED

### Step 1: Plug In and Charge

Ensure Thermometer Probe is securely inserted in the dock. Plug the USB cable into a power source and charge for at least 30 minutes.

### Step 2: Install the KitchenAid™ App

While the Smart Thermometer charges, download the KitchenAid™ App from the Apple App Store or Google Play Store.

### Step 3: Pair Smart Thermometer

Once downloaded, follow the prompts in the app to pair your Smart Thermometer and begin use.

## CARE GUIDE

**When the Thermometer Probe is hot, do not touch or remove with your bare hands.**

Always check your food for doneness before consumption. Consuming undercooked meats, poultry, seafood, shellfish or eggs may result in illness. Visit [foodsafety.gov/keep/charts/mintemp.html](https://www.foodsafety.gov/keep/charts/mintemp.html) for a complete listing of minimum safe temperatures.

Do not use the Thermometer Probe in the microwave or pressure cooker.

Do not cover the Thermometer Probe while in use.

Do not place the Thermometer Probe in direct contact with flames.

Do not place Dock on any hot surface, such as a grill cover, oven door or stove-top.

The Thermometer Probe is dishwasher safe. The Dock should not be submerged in liquid or put in the dishwasher.

Do not use cleaning products on the Smart Thermometer containing alcohol, ammonium, benzene or abrasives, all of which could damage the device.

This product is not intended for pastry or candy making. This cooking Thermometer Probe is specially designed for measuring the temperature of meat, fish and poultry.

The Thermometer Probe is sharp; insert with care.

Complete usage instructions are provided in the app and on [KitchenAid.com](https://www.KitchenAid.com).

For domestic use only.

